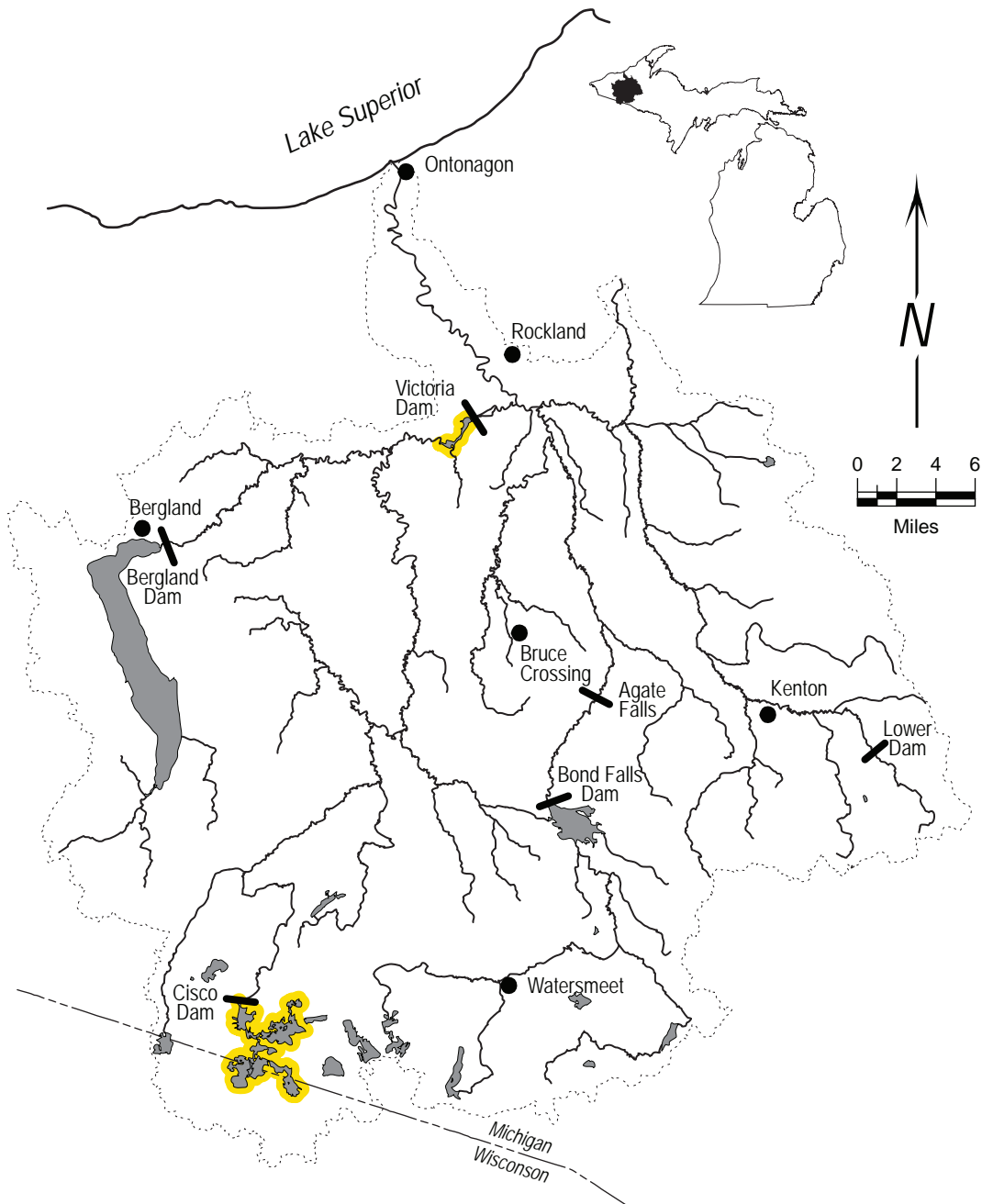


Tiger muskellunge *Esox masquinongy* x *E. lucius*

Habitat:

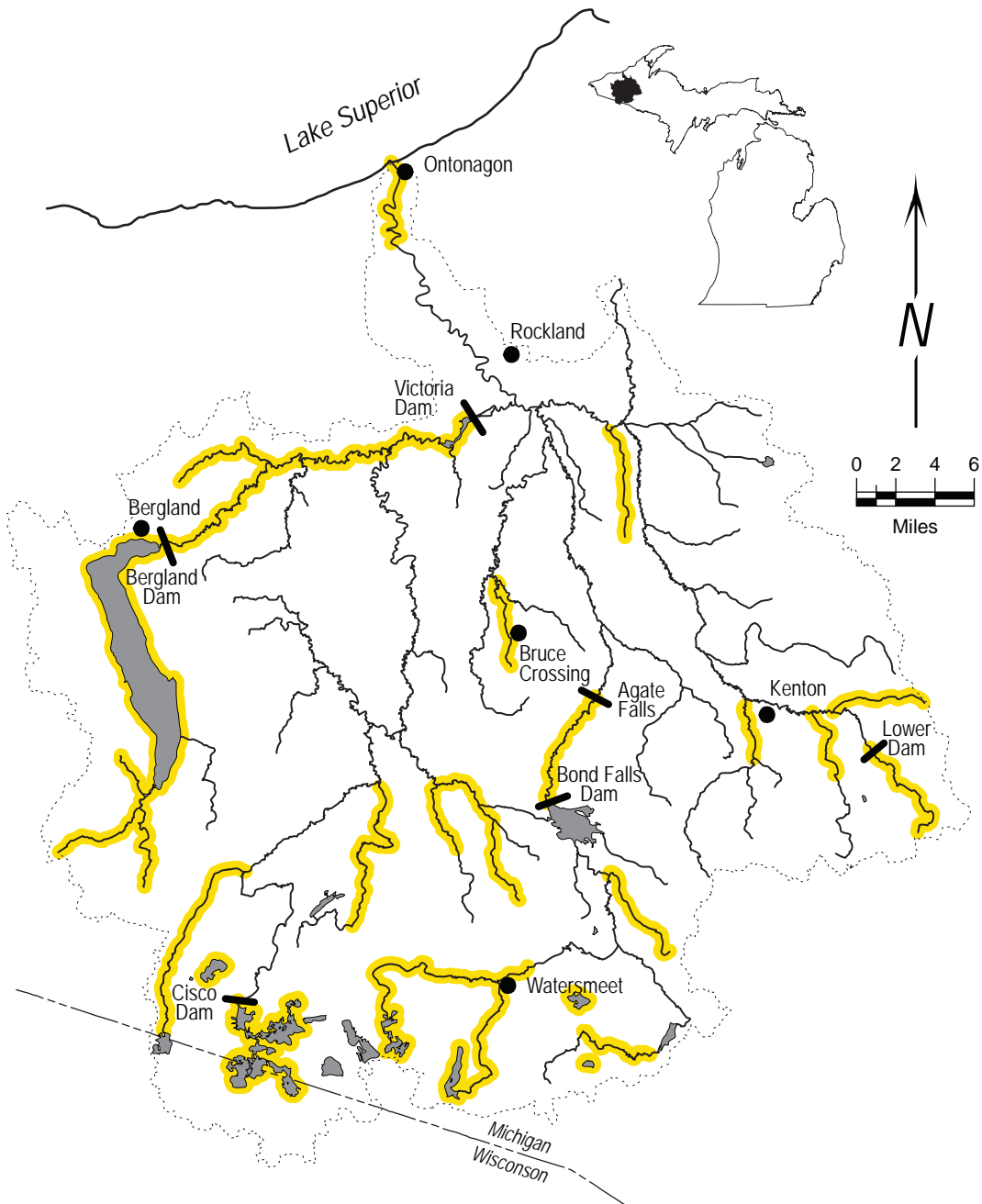
- feeding - intermediate between muskellunge and northern pike
- spawning - hybrid species; muskellunge x northern pike
 - occasionally produced in wild, but most often from hatcheries
 - males are sterile, females may be fertile



Central mudminnow *Umbra limi*

Habitat:

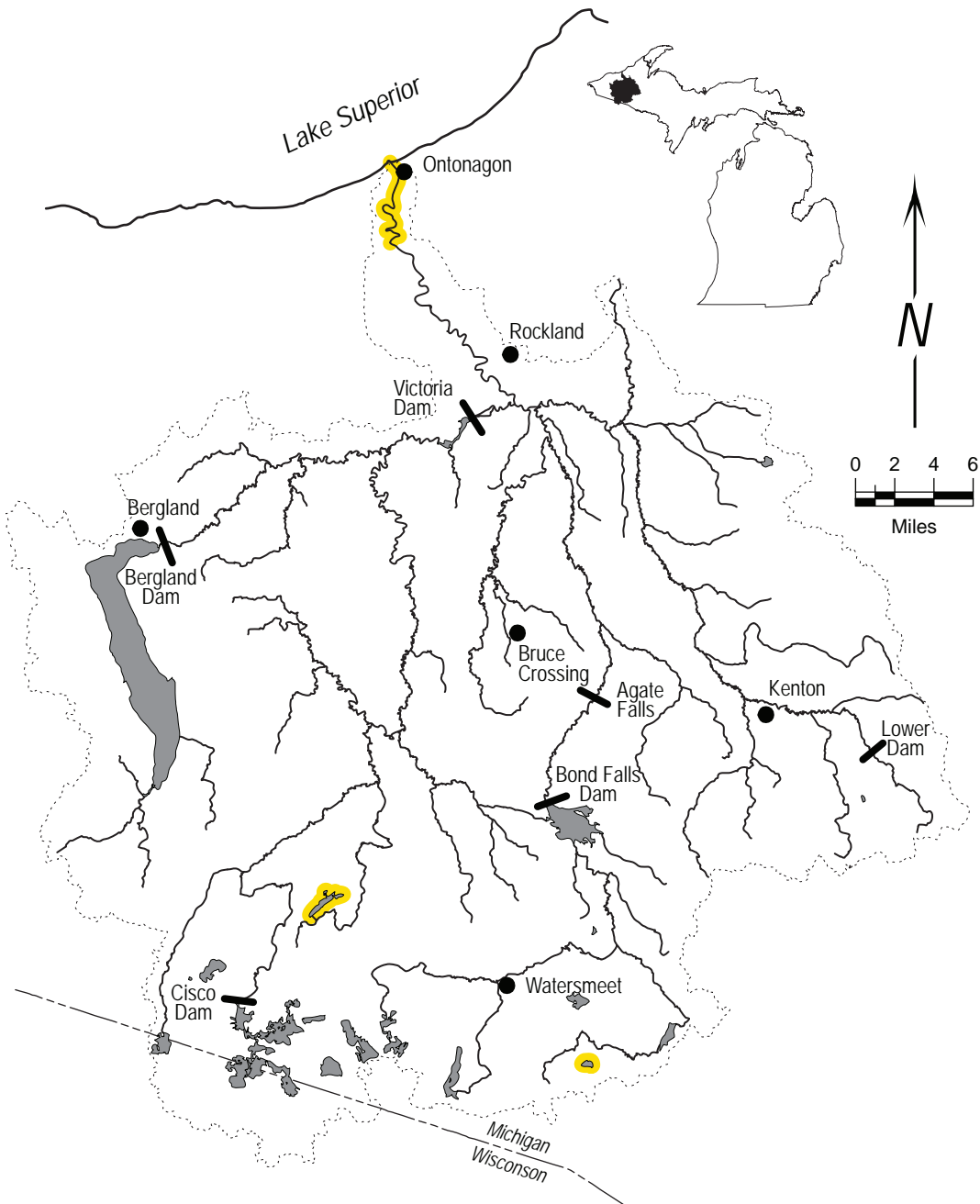
- feeding - undisturbed clear, low-gradient streams or rivers and lakes and impoundments
 - organic debris, muck, or peat substrates
 - aquatic vegetation
- spawning - floodplain areas, on vegetation



Rainbow smelt *Osmerus mordax*

Habitat:

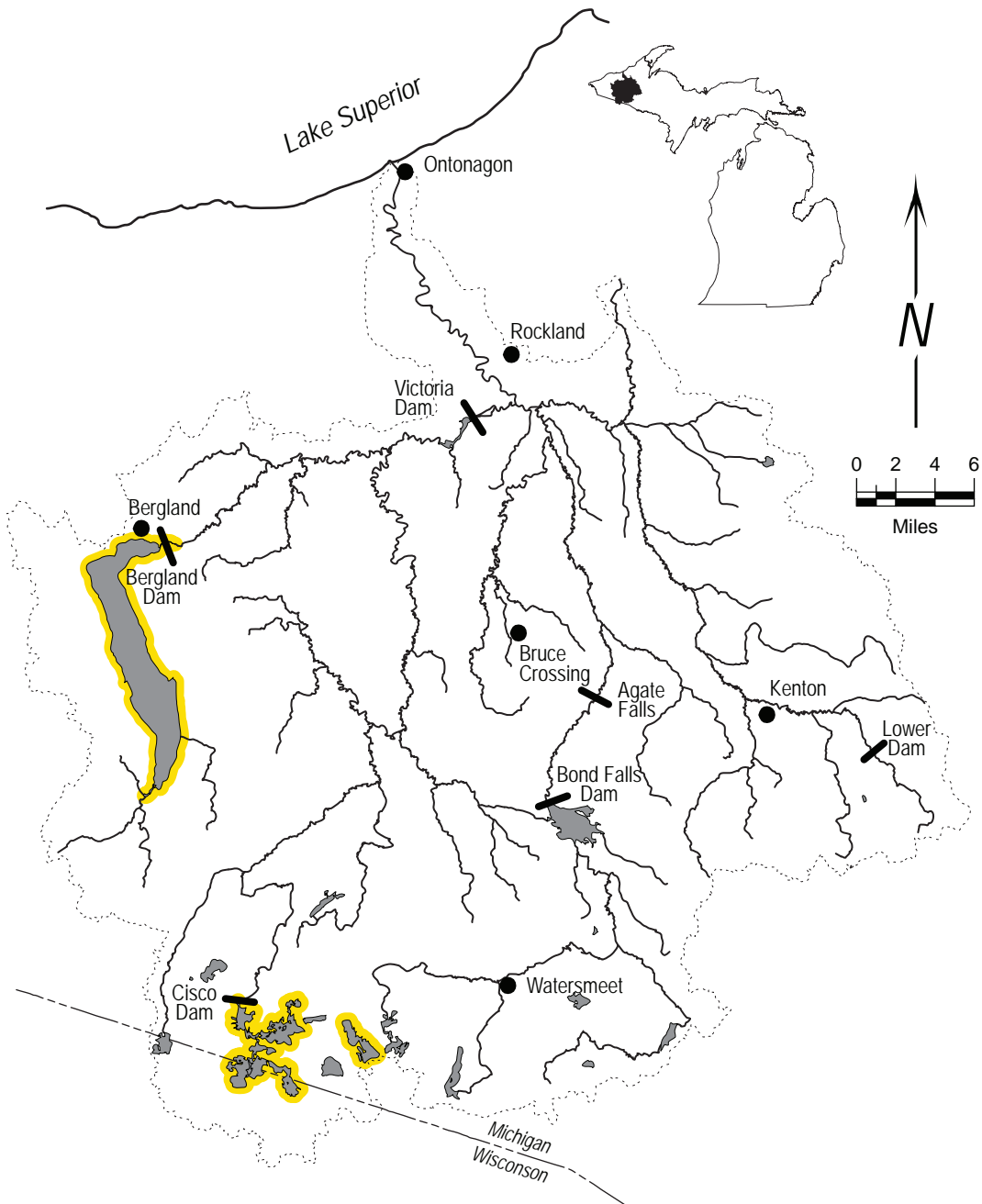
- feeding - young: close inshore lake habitat along sand and gravel beaches\
- cold water
- spawning - clear high-gradient streams or wave swept shoreline
- riffles with coarse sand or gravel substrate
- winter refuge - midwaters of lakes or inshore coastal waters



Cisco {Lake herring} *Coregonus artedii* - threatened

Habitat:

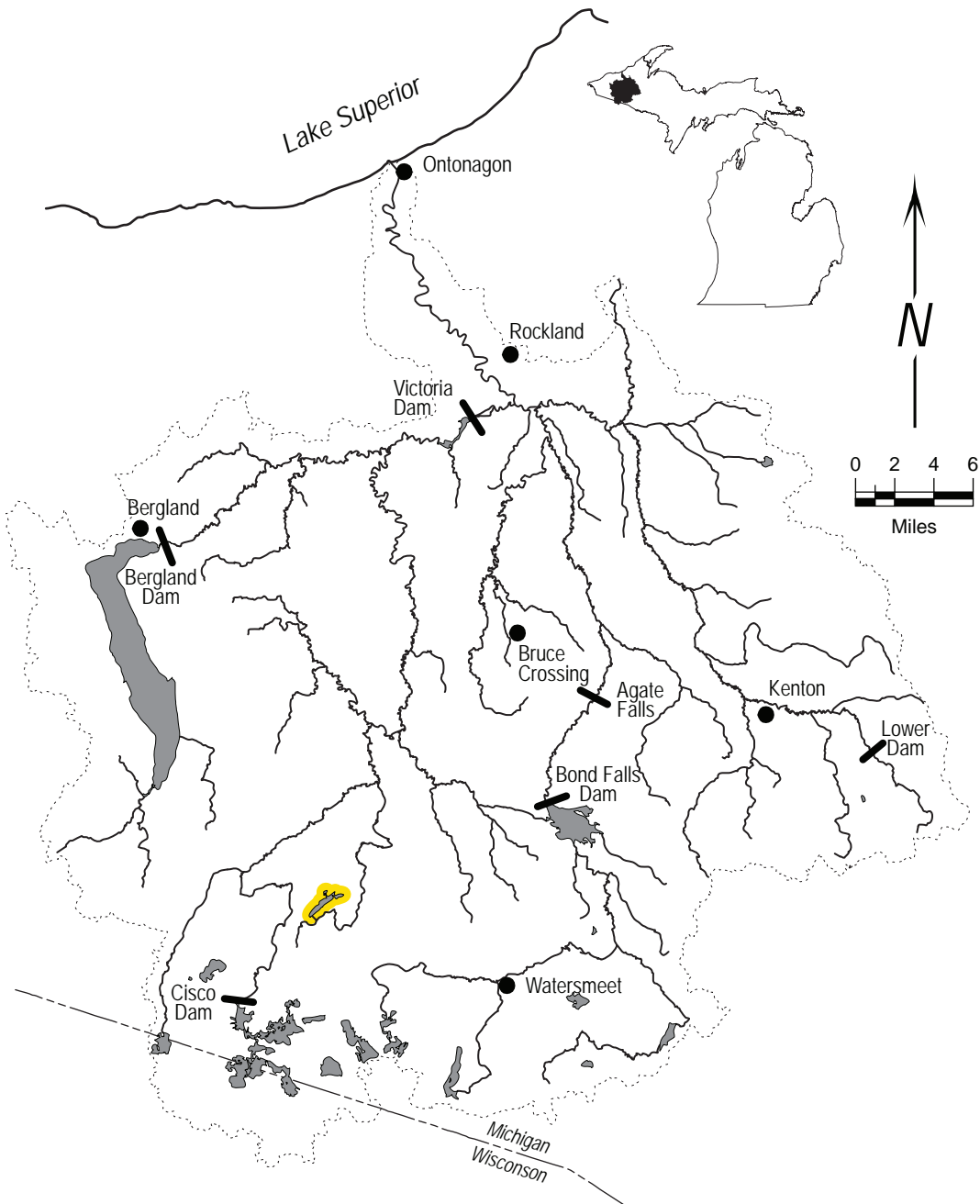
- feeding - deep cool lakes, preferably oligotrophic
- spawning - usually in lakes
 - 3 to 6 feet of water with no vegetation
 - often over gravel or stony substrate



Lake whitefish *Coregonus clupeaformis*

Habitat:

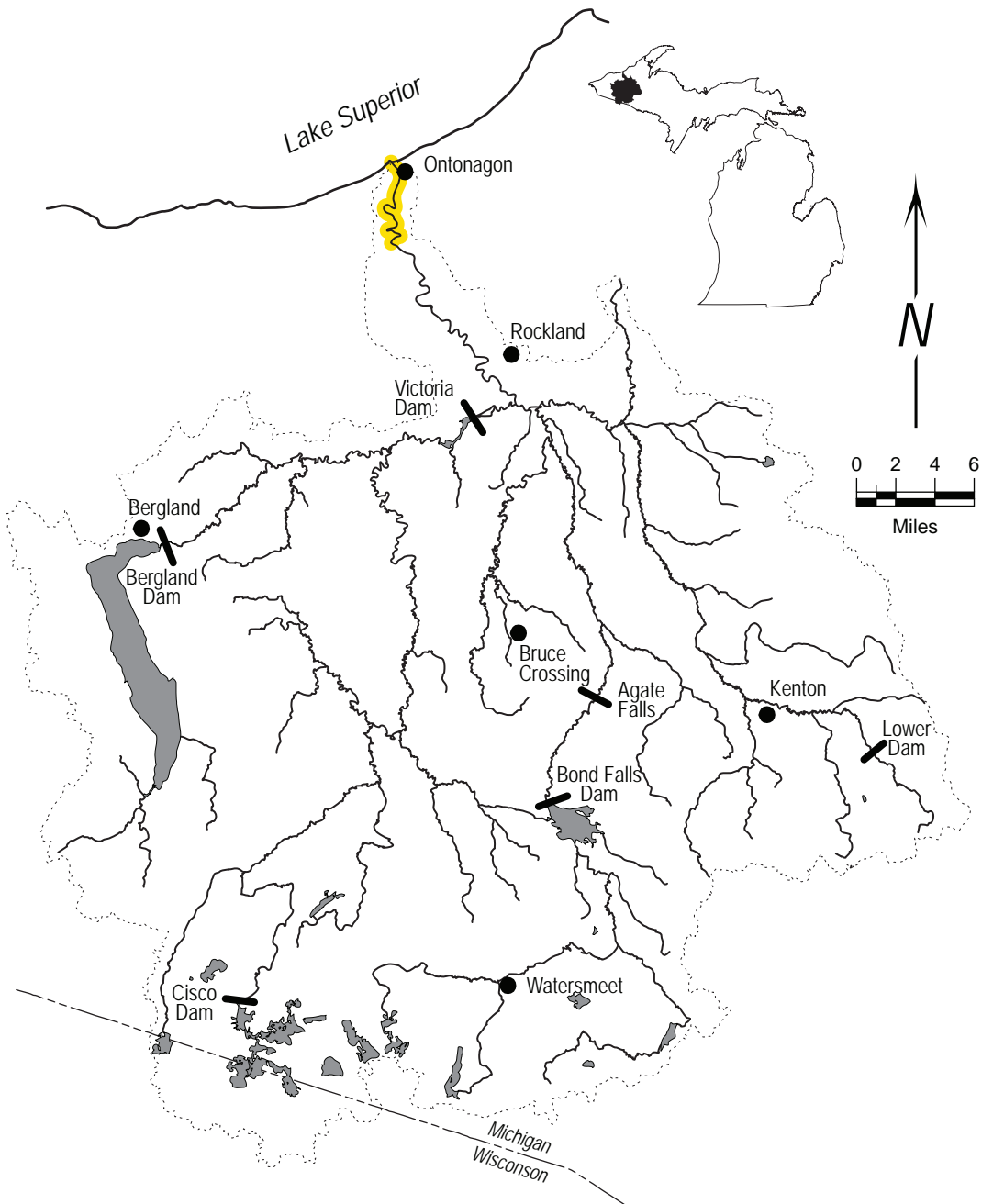
- feeding - shallow water (for coregonids; 55-105 ft.)
- spawning - cold shallow water (<25 ft.)
 - hard, stony, or sand substrate



Pink salmon *Oncorhynchus gorbuscha*

Habitat:

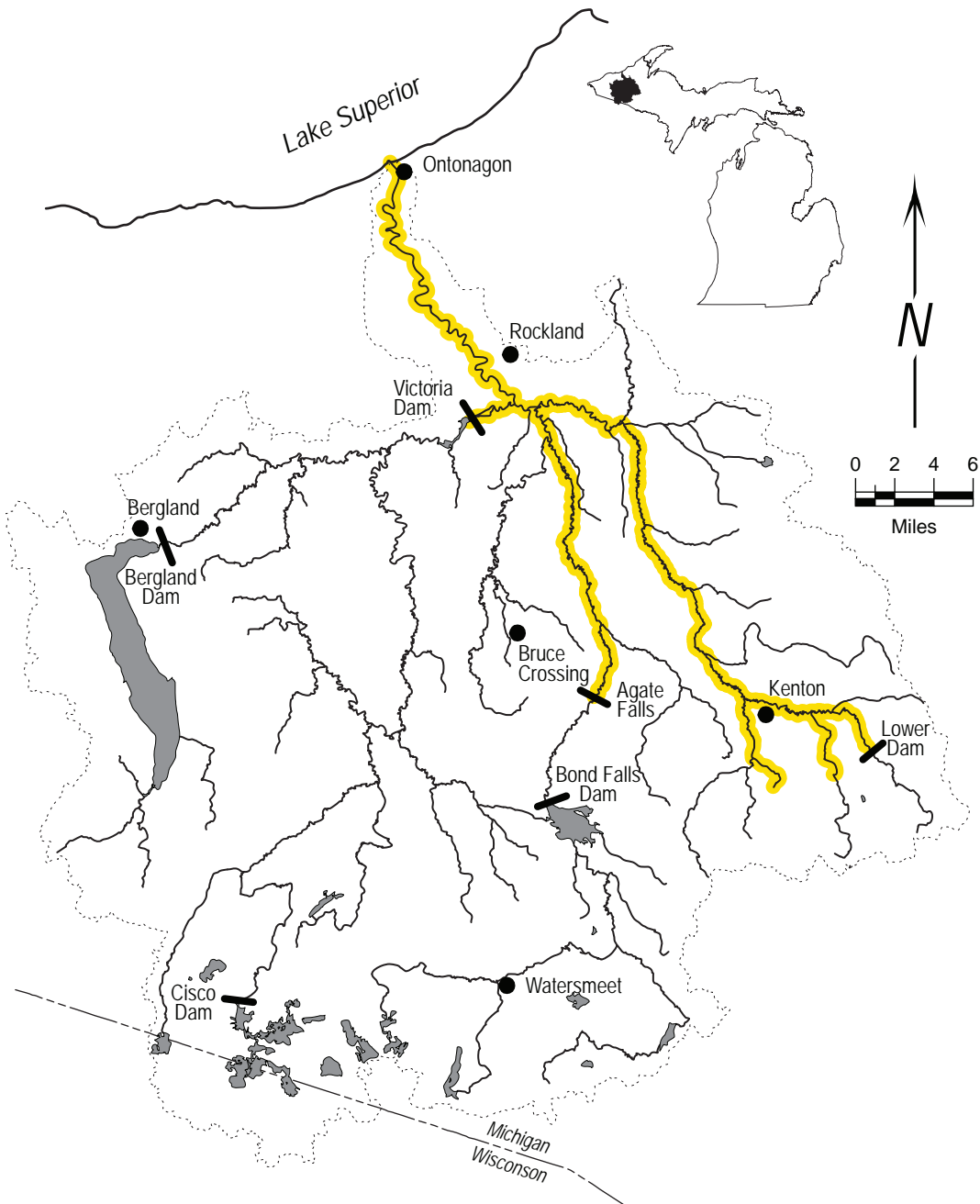
- feeding - large cold deep lakes - Lake Superior
- spawning - gravel substrate in rivers
 - female prepares and guards nest until death



Coho salmon *Oncorhynchus kisutch*

Habitat:

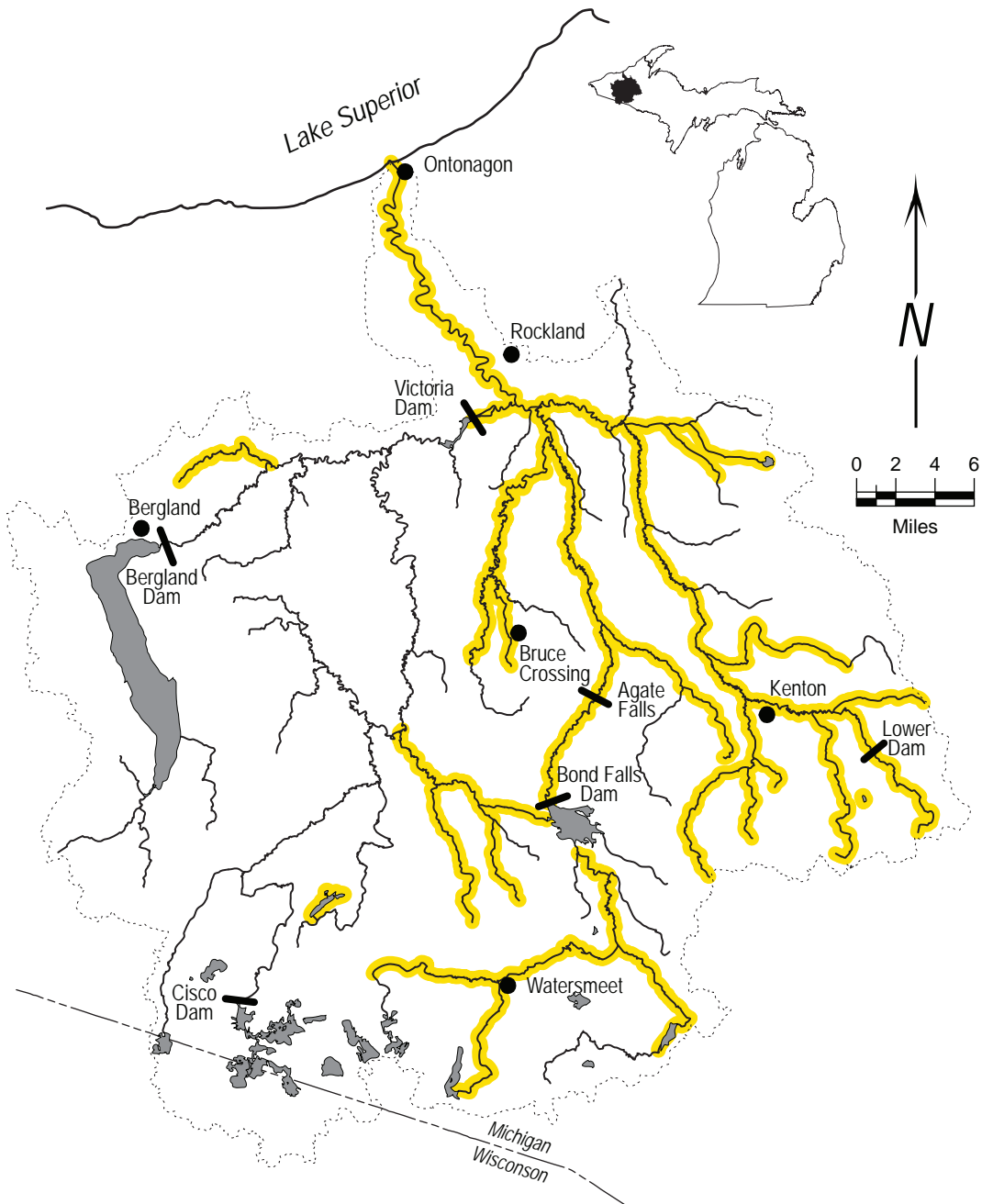
- feeding - adults: Lake Superior
- young: shallow gravel substrate in cold streams, later into pools
- spawning - cold streams and rivers
- swifter water of shallow gravelly substrate



Rainbow trout *Oncorhynchus mykiss*

Habitat:

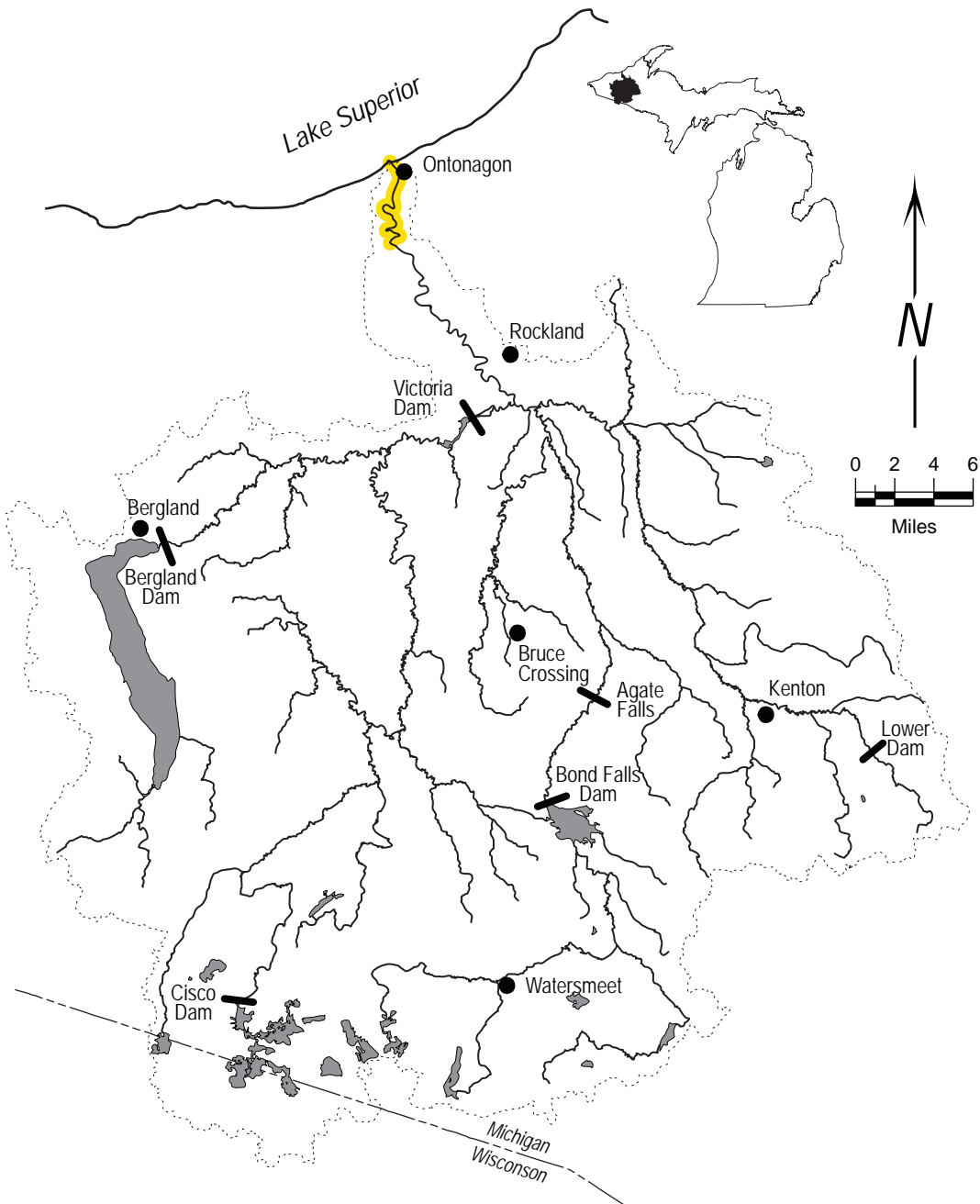
- feeding - cold clear water of rivers and Lake Superior
- moderate current
- spawning - gravelly riffles above a pool
- smaller tributaries



Chinook salmon *Oncorhynchus tshawytscha*

Habitat:

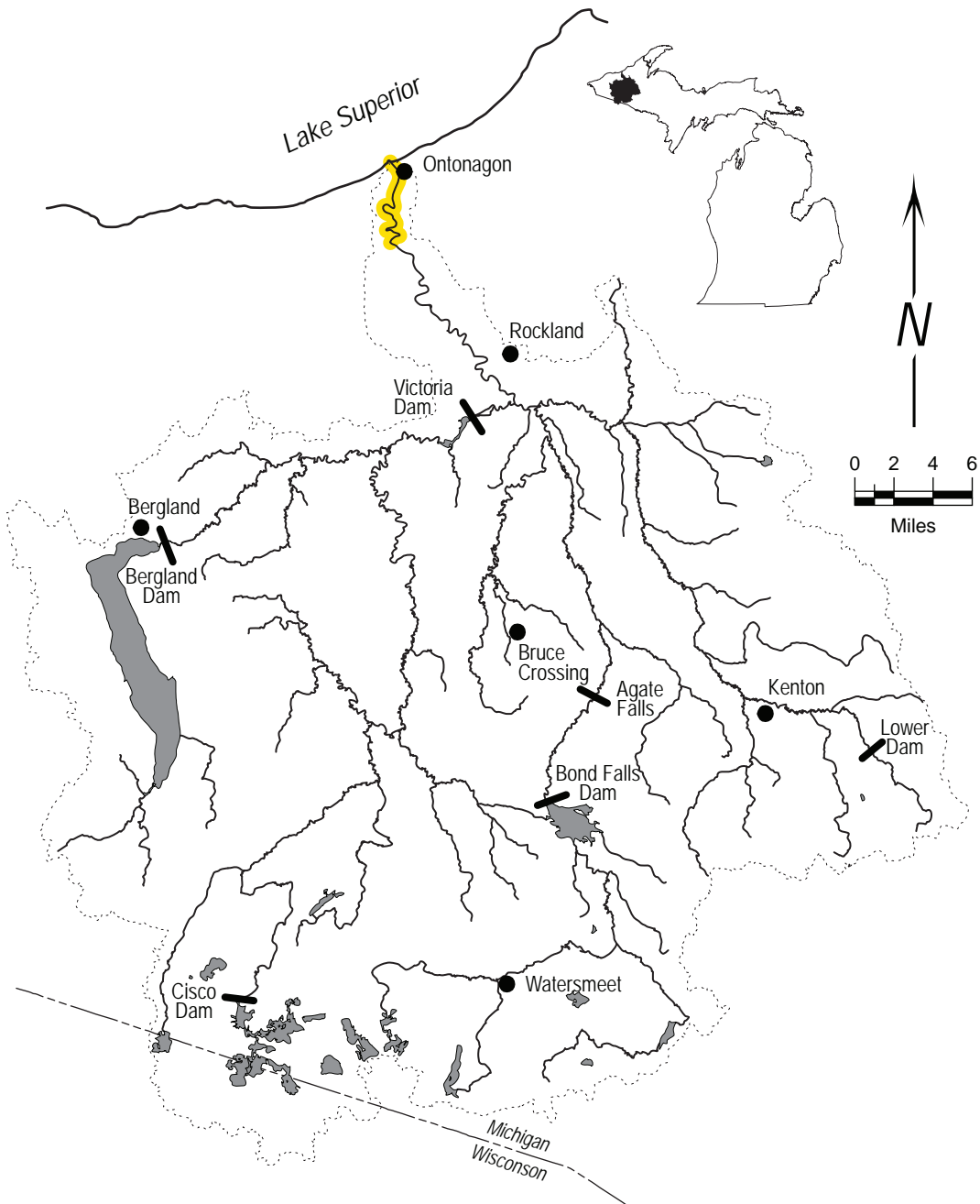
- feeding - adults: Lake Superior
- young: shallow gravel substrate in cool streams, later into pools
- spawning - gravelly substrate in cool streams



Round whitefish *Prosopium cylindraceum*

Habitat:

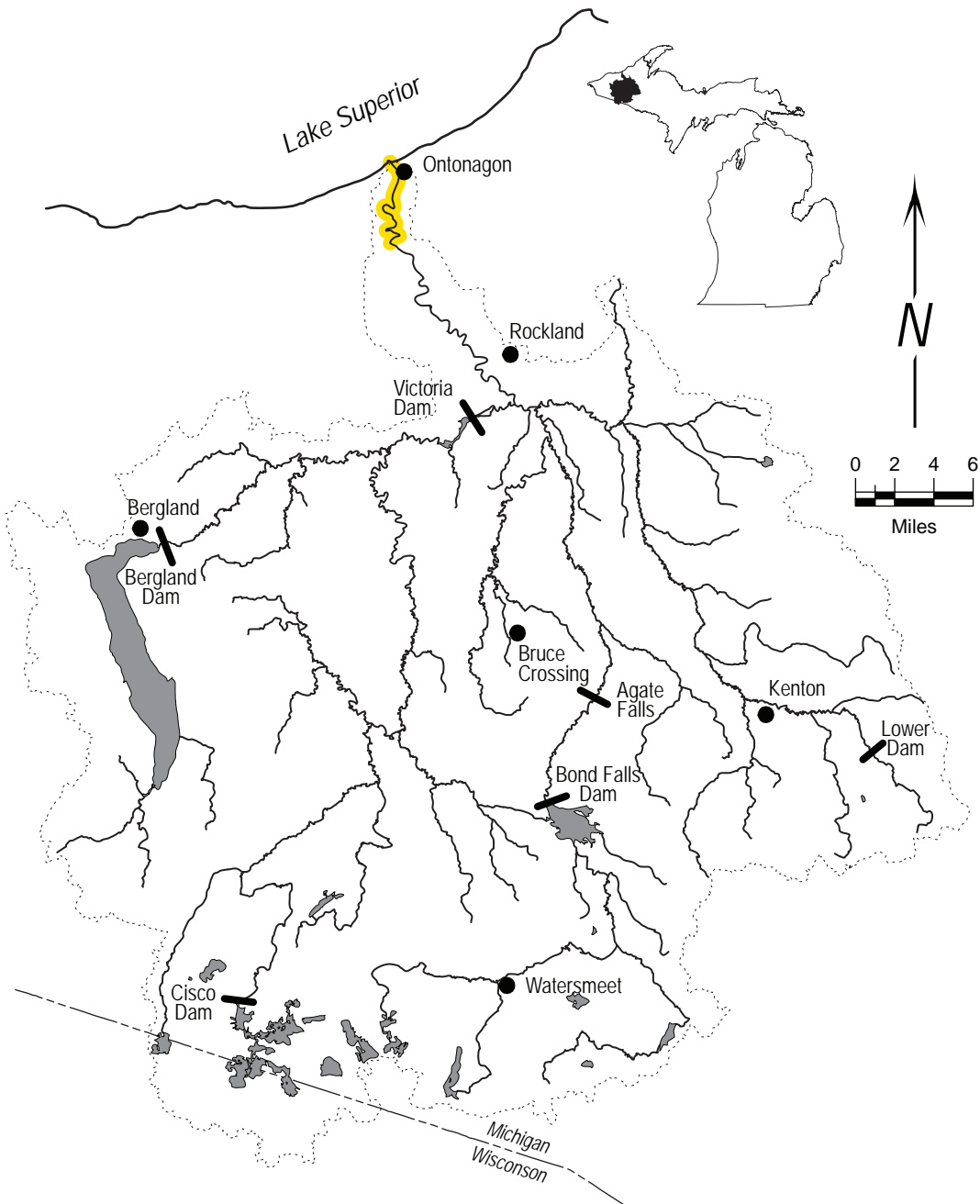
- feeding - lakes, rivers, and streams
- spawning - shallows of lakes and rivers
 - gravel or rock substrate



Atlantic salmon *Salmo salar*

Habitat:

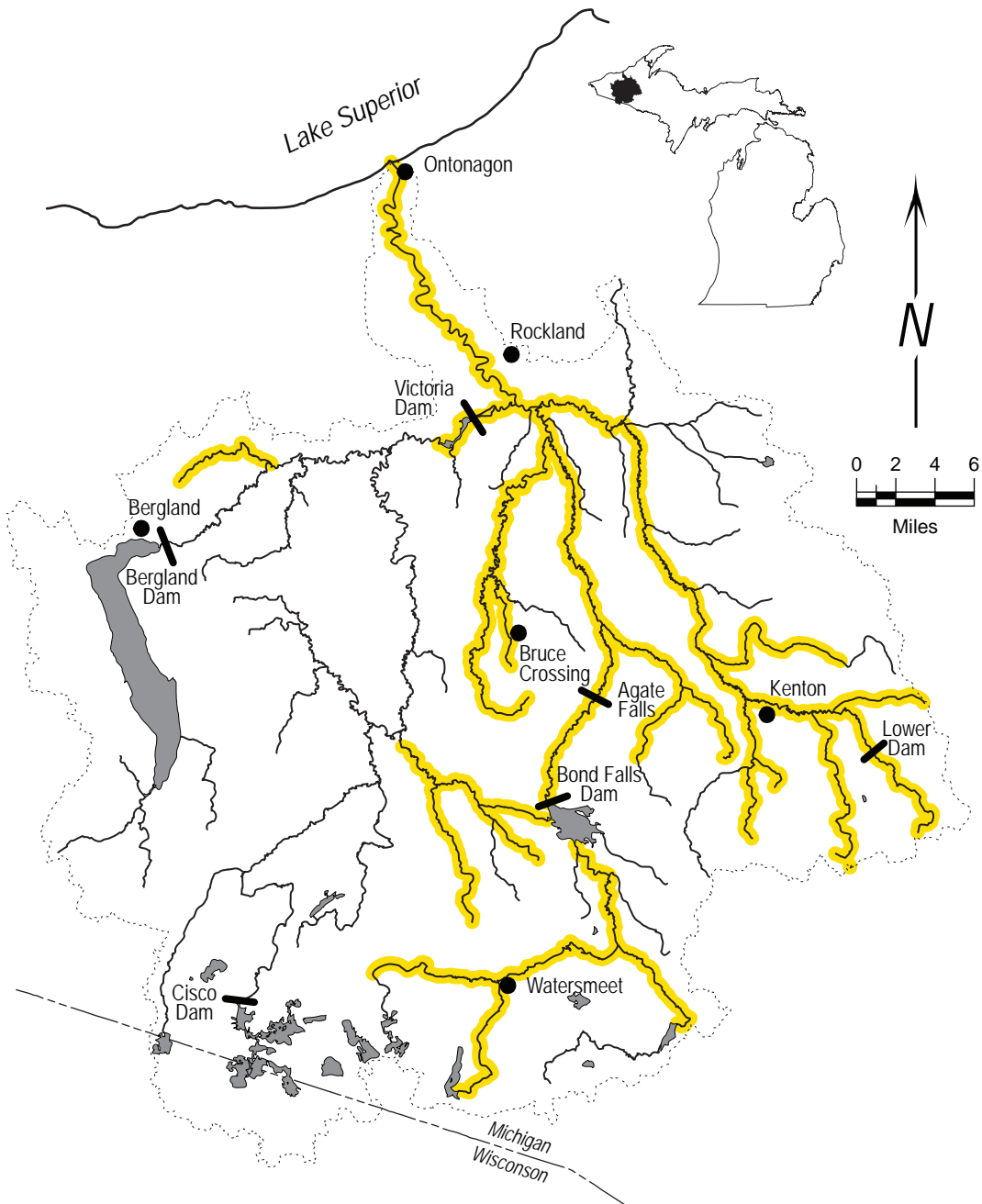
- feeding - young: gravel substrate streams
- adults: Lake Superior
- spawning - streams and rivers
- nests in gravel substrate
- swift current



Brown trout *Salmo trutta*

Habitat:

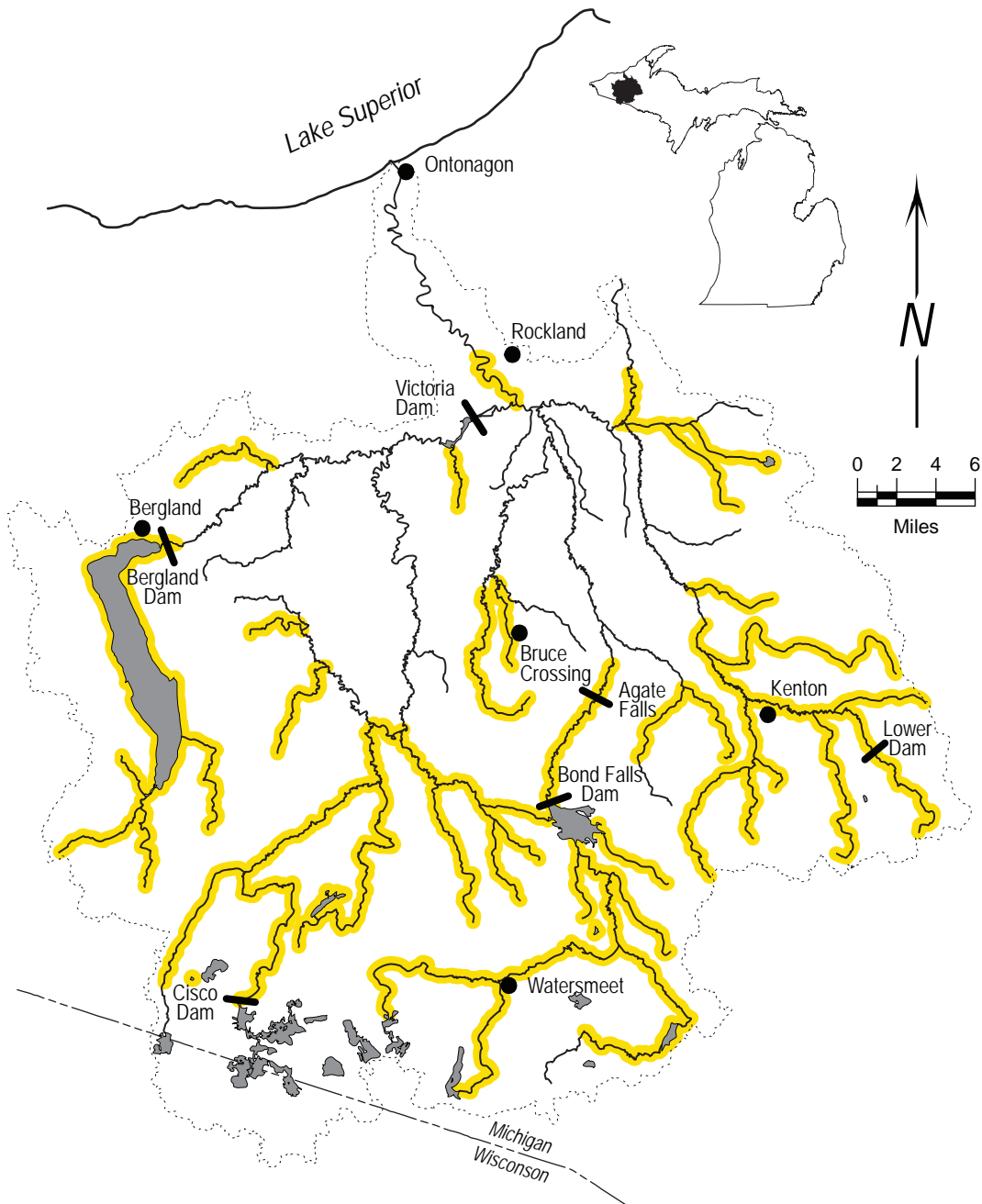
- feeding - cold, clear streams, rivers, and lakes (not >70°F)
- medium to swift current in streams
- does not tolerate silt well
- prefers few individuals and species around
- abundance of aquatic and land insects
- spawning - gravelly riffles; shallow headwater areas



Brook trout *Salvelinus fontinalis*

Habitat:

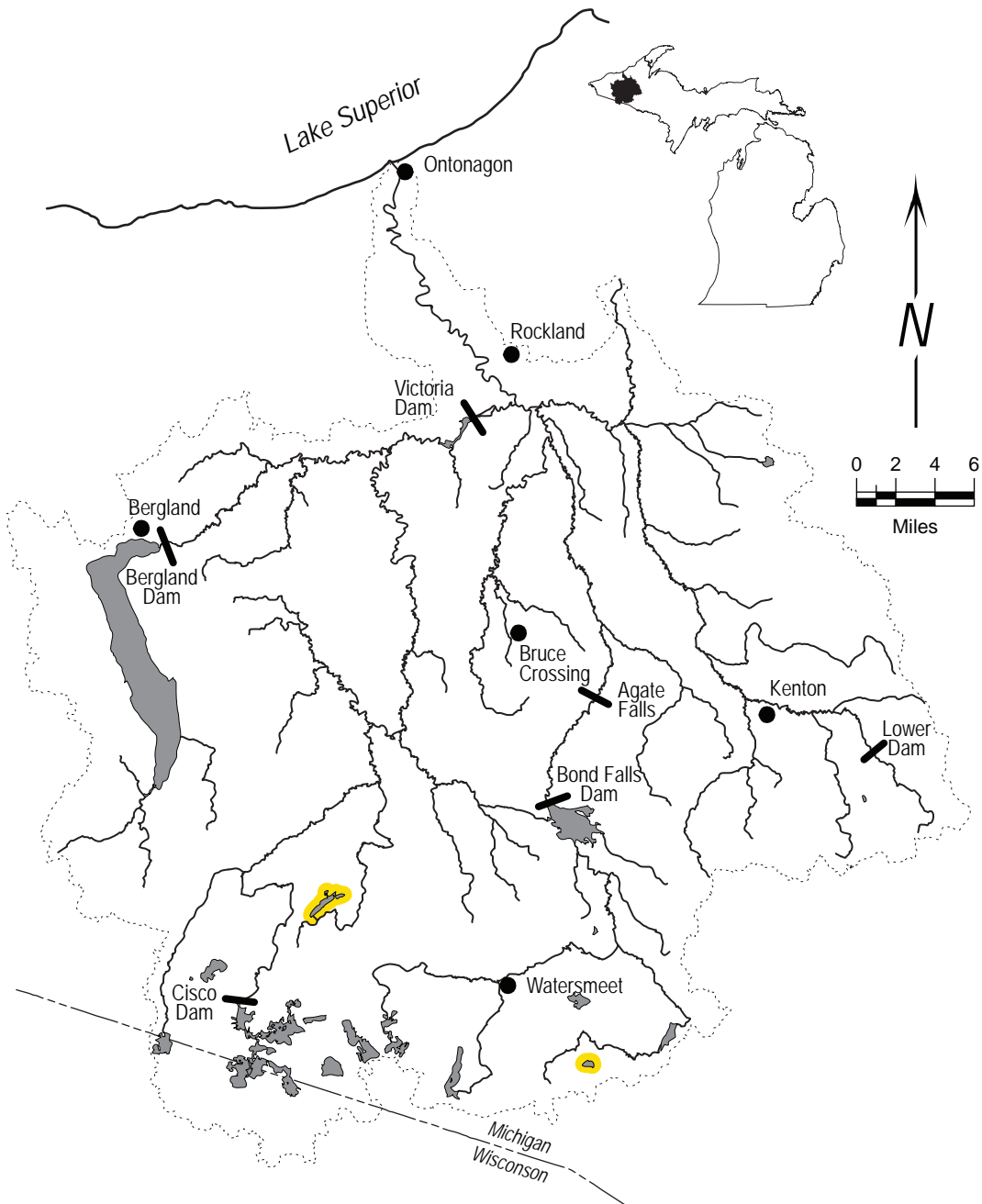
- feeding - cold, clear streams, rivers, and lakes (not >65°F)
- low current
- well oxygenated water
- spawning - gravelly riffles; shallow or headwater streams



Splake *Salvelinus fontinalis* x *Salvelinus namaycush*

Habitat:

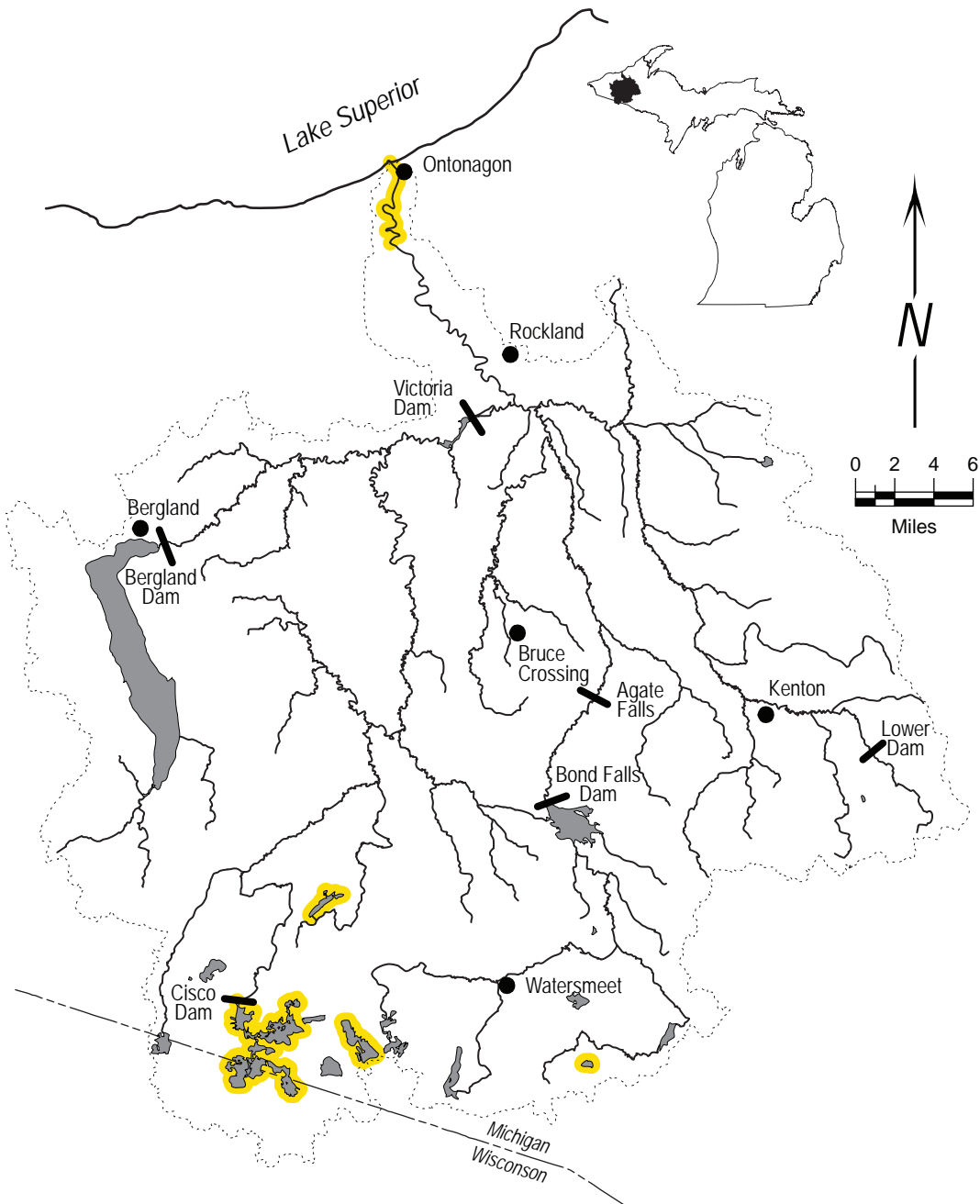
- feeding - littoral habitat
- cool water lakes; also Lake Superior
- spawning - hatchery produced cross of brook and lake trout
- offspring usually fertile, but with lower fecundity than either parent species



Lake trout *Salvelinus namaycush*

Habitat:

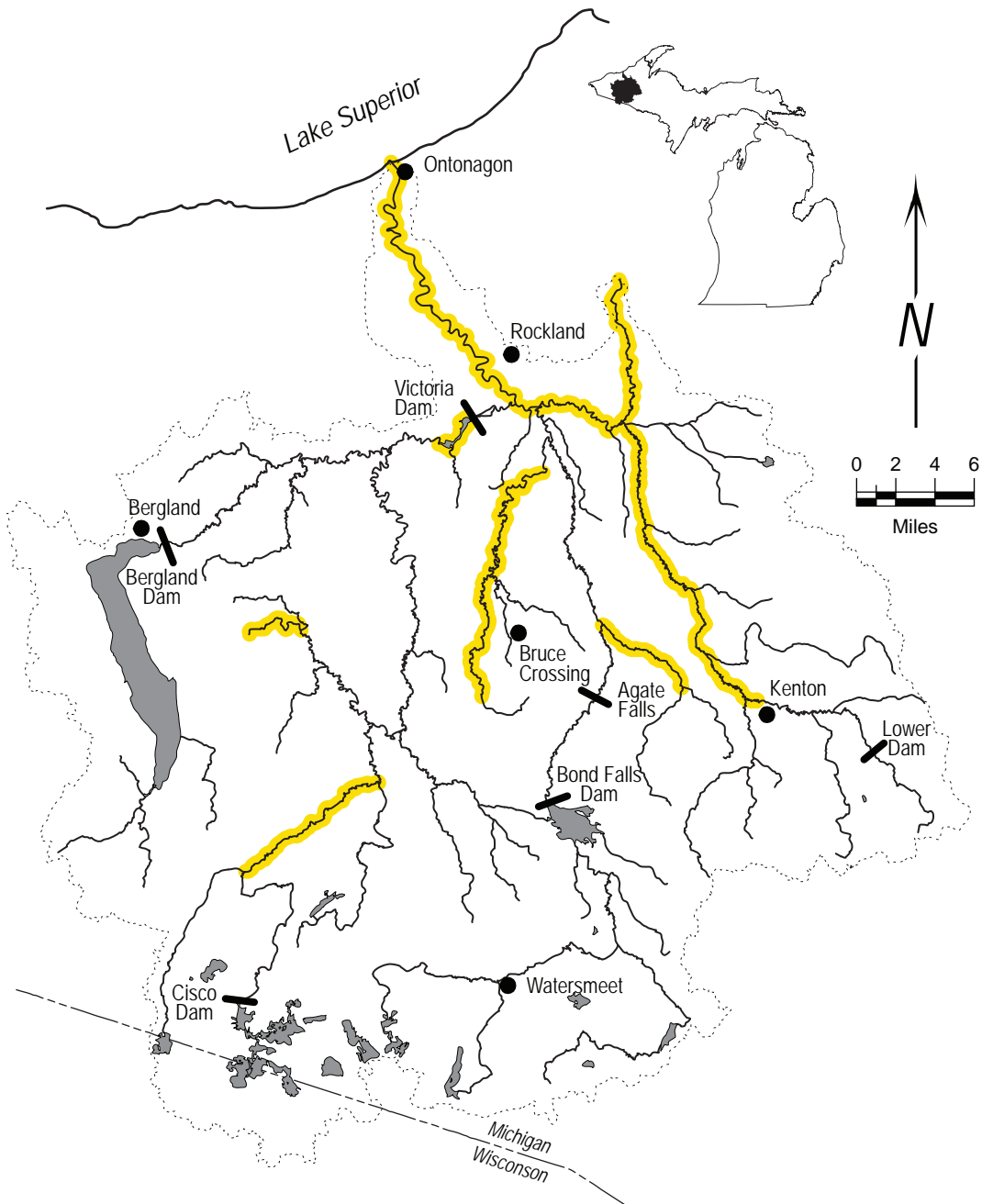
- feeding - cold lakes and rivers
- spawning - large boulder or rubble substrate
- shallow water of lakes and rivers



Trout-perch *Percopsis omiscomaycus*

Habitat:

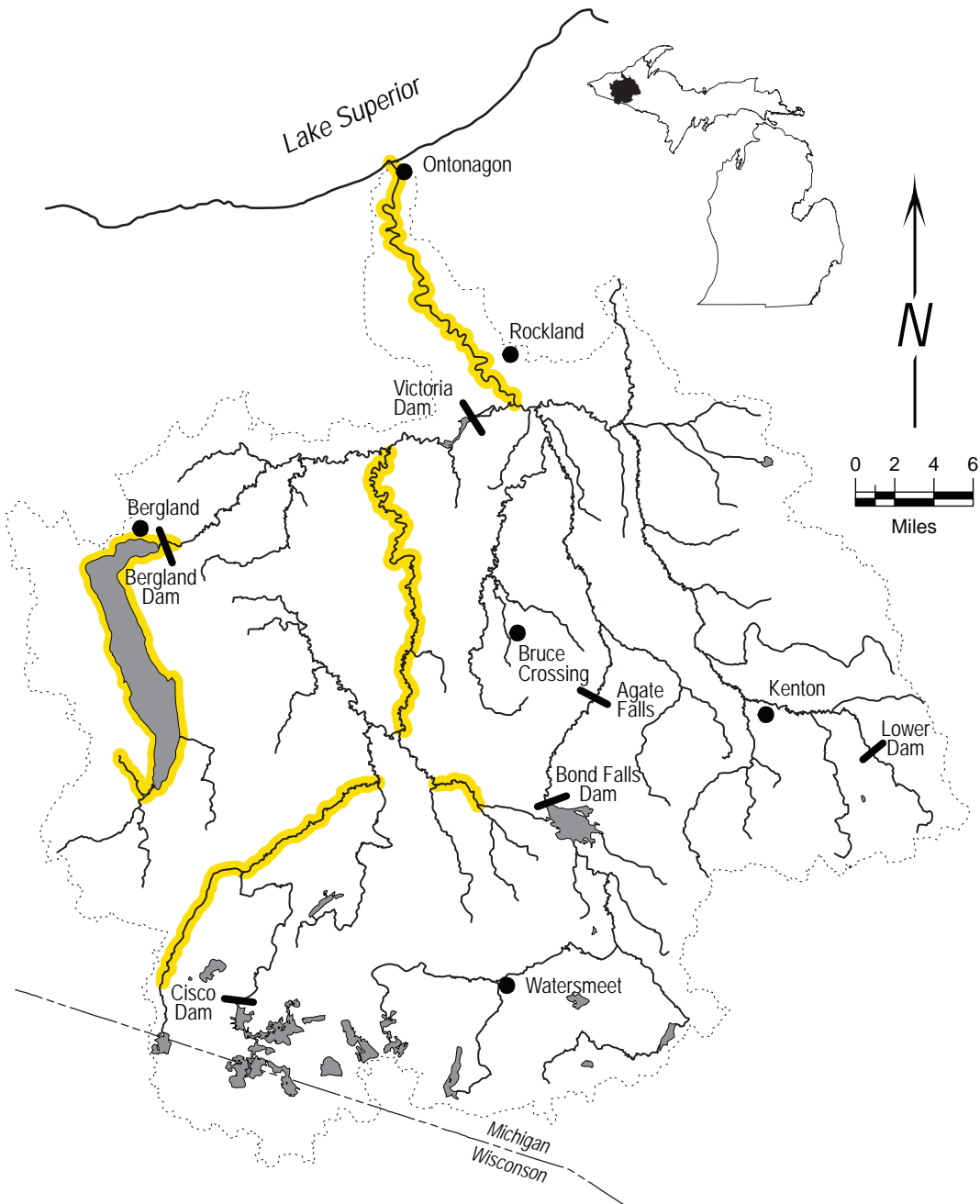
- feeding - clean sand or fine gravel substrate
- long deep pools in low gradient streams and Lake Superior
- highly intolerant of clayey silts
- avoids rooted aquatic vegetation
- spawning - over rocks in shallows
- over sand and gravel substrates in Lake Superior



Burbot *Lota lota*

Habitat:

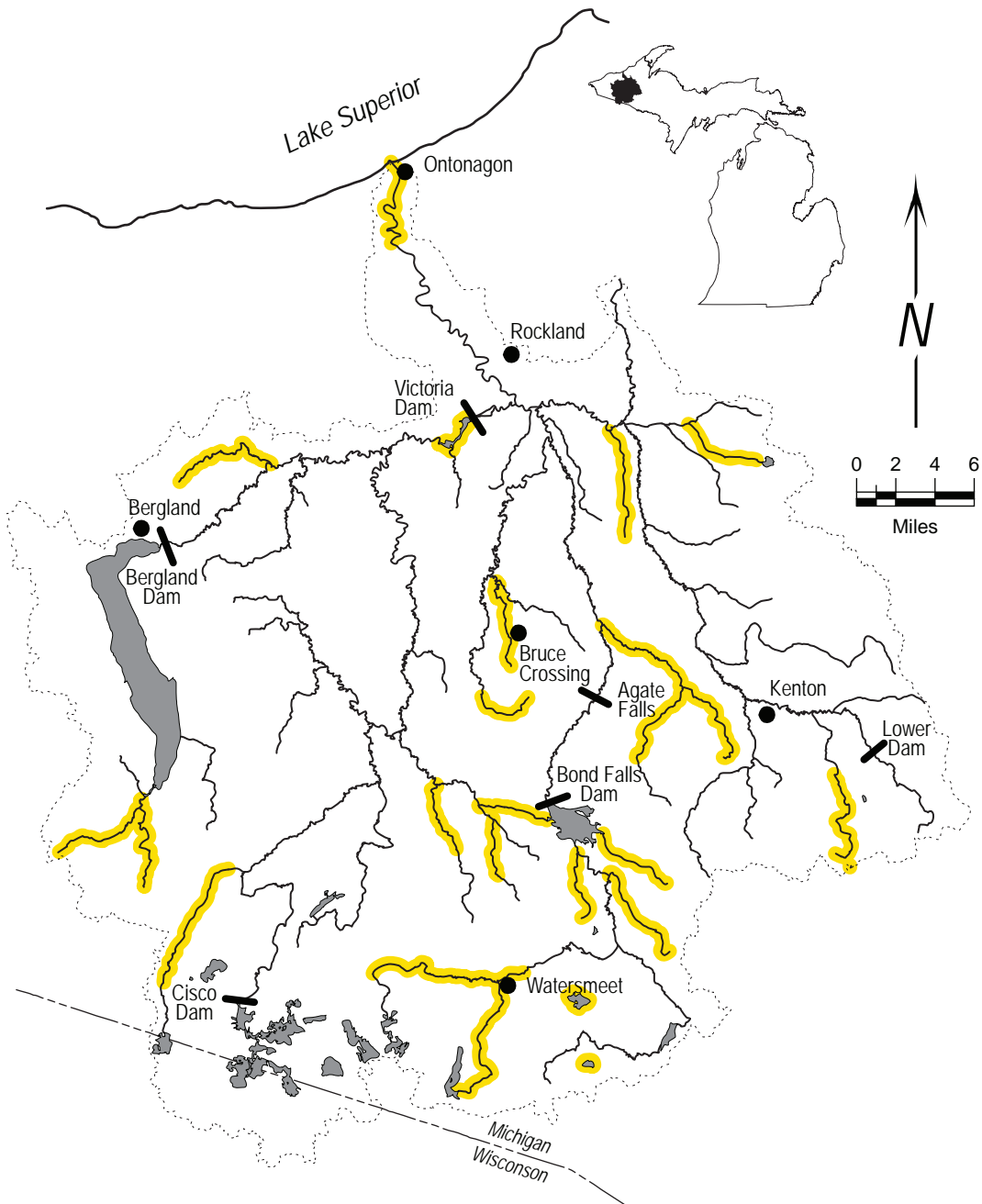
- feeding - deep cold lakes and large cool rivers
- mud, sand, rubble, boulder, silt, and gravel substrates
- spawning - in 1 to 4 feet of water in shallow bays or on shoals 5-10 feet deep usually in lakes, sometimes rivers
- over sand or gravel substrate
- under ice



Brook stickleback *Culaea inconstans*

Habitat:

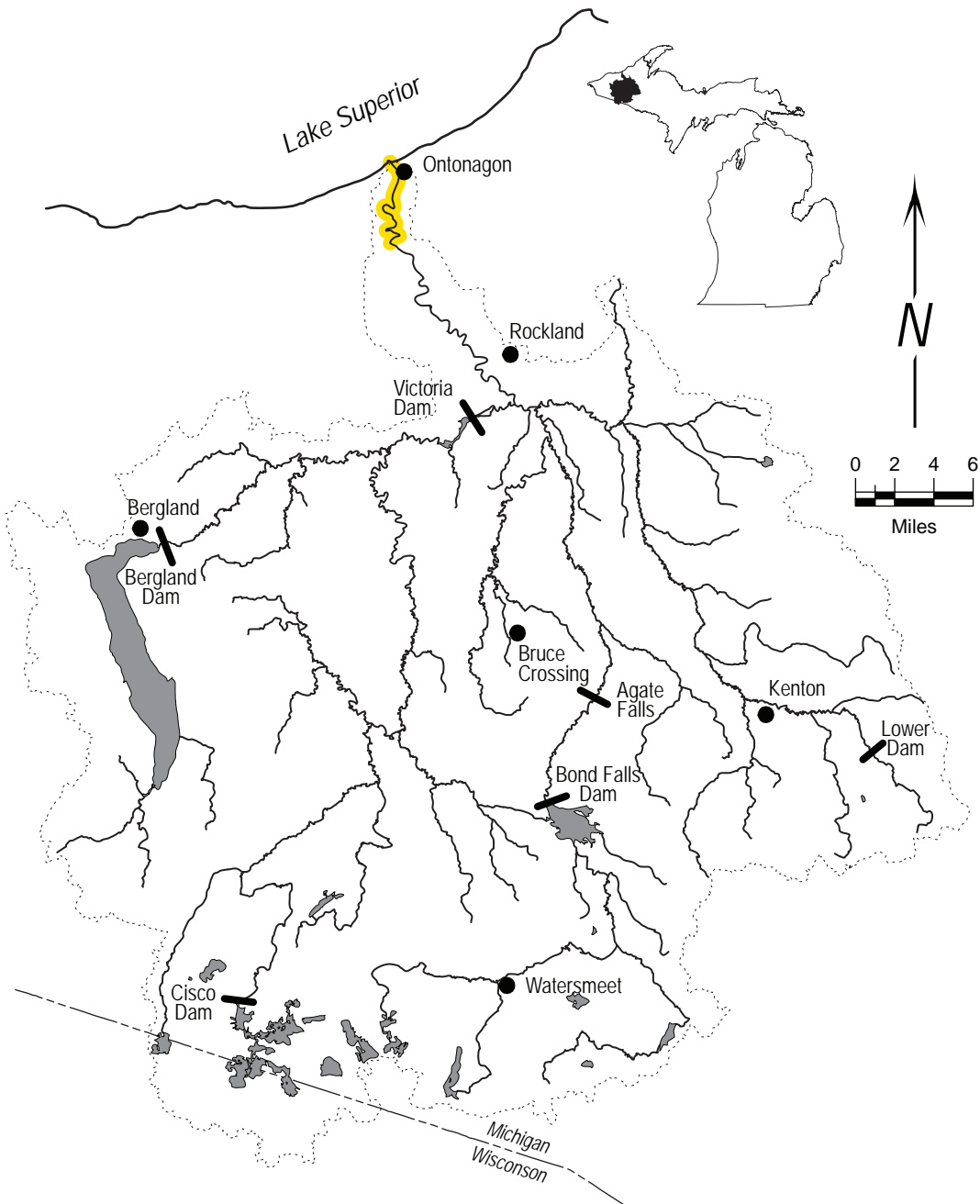
- feeding - clear, cold, densely vegetated streams, and swampy margins of lakes
- low gradient
- muck, peat, or marl substrate
- not tolerant of turbidity
- spawning - shallow cool (<66°F) water
- aquatic reeds or grasses necessary



Ninespine stickleback *Pungitius pungitius*

Habitat:

- feeding - open water of lakes; also Lake Superior
- cool quiet waters
- spawning - builds nests among aquatic vegetation in creeks and streams



Mottled sculpin *Cottus bairdii*

Habitat:

- feeding - cool to cold streams
- riffle and rock substrates preferred
- clear to slightly turbid shallow water
- spawning - nests under logs or rock

