



TIMBER SALE MAP

This information provided by authority of Part 525, 1994 PA 451, as amended.

| | | |
|---------------------------------|---------------------------|----------------|
| Sale Number 61-016-25 | Date 04/02/2025 | |
| Scale 1:10,000 | Page 1 | Of 1 |

| | | |
|--|--------------------------|---|
| Forest Management Unit Traverse City Mgt Unit | County Grand Traverse | Mapped By: Ventimiglia Cruised By: Ventimiglia |
|--|--------------------------|---|

| | | |
|-----------------|--------------|--|
| Township 25N | Range 09W | Section(s) and Subdivision(s) Sec. 23 S1/2NW,SWNE,N1/2SW,NWSE; |
|-----------------|--------------|--|

| Cover Type | | | |
|---------------------|-------------------------|-------------------------|------------------------|
| A = Aspen | J = Jack Pine | O = Oak | U = Upland Brush |
| B = Paper Birch | K = Rock | P = Lowland Poplar | UM = Upland Mix Forest |
| C = Cedar | L = Lowland Brush | Q = Mixed Swamp Conifer | V = Bog or Marsh |
| D = Treed Bog | LM = Lowland Mix Forest | R = Red Pine | W = White Pine |
| E = Swamp Hardwoods | M = Maple, Beech, Birch | S = Black Spruce | X = Non Stocked |
| F = Spruce/Fir | MC = Mixed Conifer | T = Tamarack | Y = Sand |
| G = Grass | MD = Mixed Deciduous | Z = Water | |
| H = Hemlock | N = Marsh | | |

| Density | |
|-----------------------------|------------------------|
| 0 = Non Stocked | 5 = Pole Timber Medium |
| 1 = Seedling Sapling Poor | 6 = Pole Timber Well |
| 2 = Seedling Sapling Medium | 7 = Saw Timber Poor |
| 3 = Seedling Sapling Well | 8 = Saw Timber Medium |
| 4 = Pole Timber Poor | 9 = Saw Timber Well |

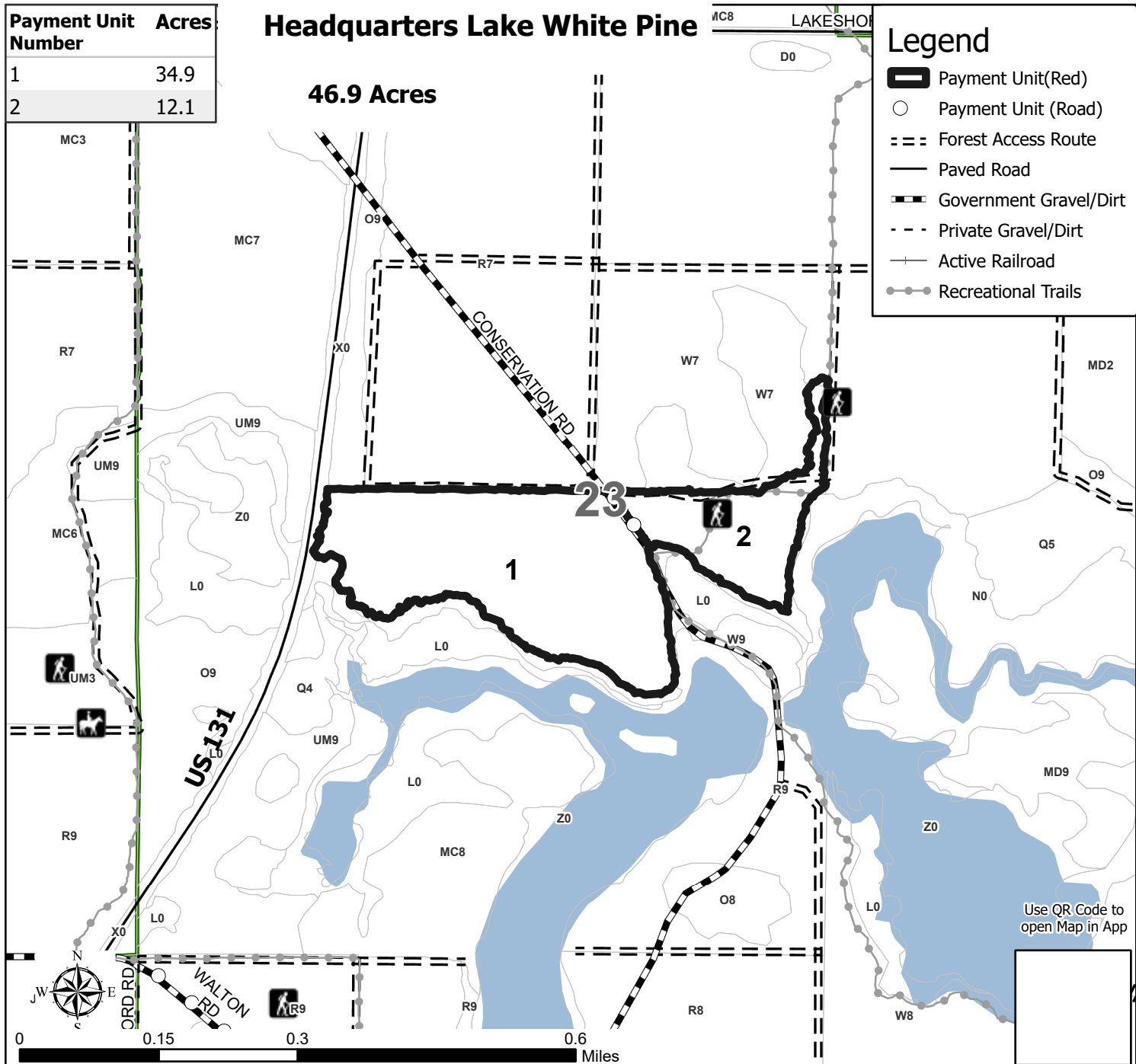
| Payment Unit Number | Acres |
|---------------------|-------|
| 1 | 34.9 |
| 2 | 12.1 |

Headquarters Lake White Pine

46.9 Acres

Legend

- Payment Unit(Red)
- Payment Unit (Road)
- Forest Access Route
- Paved Road
- Government Gravel/Dirt
- Private Gravel/Dirt
- Active Railroad
- Recreational Trails



Use QR Code to open Map in App