



**DEPARTMENT OF NATURAL RESOURCES
STATE OF MICHIGAN
TIMBER SALE PROSPECTUS #7694**

SCHEDULED SALE DATE AND TIME: 2:00 p.m. (local time) on January 12, 2026.

LOCATION: **GWINN MGMT UNIT, 410 WEST M 35, GWINN, MI 49841.**

PROSPECTUS NOTE: The bidder is advised to inspect the sale area and review the location, estimated volumes, operating costs and contract terms of proposed sales. Please be aware that some landowners may request 60 days or more notice for access across their land.

Notice is hereby given that bids will be received by the Unit Manager, GWINN MANAGEMENT UNIT, for certain timber on the following described lands:

Peshekee Supreme (32-004-25) / T48N, R30W, SEC. 12, E1/2SE.

T48N, R30W, SEC. 13, E1/2NW.

Marquette County, Advertised Price \$5,589.25, 46.5 Acres, Hardwood, Paper Birch.

SALE NOTE: Four-year timber sale contract restricted to winter frozen during 12/1 to 4/1.

Perrin Bear (32-013-25) / T44N, R26W, SEC. 11, NE, S1/2SW, NESE, S1/2SE.

T44N, R26W, SEC. 12, W1/2NW, W1/2SW.

T44N, R26W, SEC. 14, NENW, NWNE.

Marquette County, Advertised Price \$54,528.00, 227.1 Acres, Hardwood, Spruce/Fir/Tamarack.

SALE NOTE: Units 1-10 have bark slip restriction from 4/15 - 7/15. Unit 12 is restricted to winter frozen conditions.

A recreation site such as a trail, pathway, or campground is within the sale area or the vicinity. Certain restrictions/specifications may be applicable including time restrictions. Access may be through other public land.

Anderson Lake (32-019-25) / T44N, R25W, SEC. 7, W1/2NW.

T44N, R26W, SEC. 12, SENW, NE, NESW, N1/2SE, SWSE.

Marquette County, Advertised Price \$28,125.55, 124.7 Acres, Hardwood, Aspen.

SALE NOTE: No operations from 12/15 - 7/15 due to the Anderson Lake ski trails and campground.

A recreation site such as a trail, pathway, or campground is within the sale area or the vicinity. Certain restrictions/specifications may be applicable including time restrictions.

BID INSTRUCTIONS (VER. 10/10/2022):

1. Scheduled Bid Location, Date, and Time (2/11)

Bids must be received by the Unit Manager, GWINN OFFICE, 410 WEST M 35, GWINN, MI 49841, no later than 2:00 p.m. (local time) on January 12, 2026. For further information concerning this sale, contact Mike Brodeur at 906-346-9201 extension 103.

2. Bidder's Qualifications (10/22)

If all or part of a timber sale was prepared by a private contractor, the contractor and that contractor's company are not permitted to bid on the timber sale. A person must be 18 years of age or older to purchase timber. Permanent employees of the Department of Natural Resources or members of their immediate household may not bid. Former employees, in the permanent or seasonal class, may not bid until 3 months after the last day of active duty. Bids will not be accepted from individuals or companies appearing on the DNR/FRD No-Bid List. This list contains the names of purchasers who previously failed to execute a contract within 21-days or who have a history of poor performance.

3. Preparation of Sealed Bids (5/16)

Bid Forms may be completed online thru Michigan DNR Timber Sale Online Bidding (OLB) at www.michigan.gov/timberbidding or by completing the hardcopy Bid Form found in the Timber Sale Prospectus. Hardcopy Bid Forms shall be manually signed in ink. Registration in OLB is considered your 'signature' for all bids submitted thru that system. Bid prices must be entered for each species and product in the Bid Price column for all material subject to bidding and all fill-in blanks must be completed. If erasures or other changes appear on the hardcopy Bid Form, each erasure or change must be initialed by the person signing the bid.

4. Submission of Sealed Bids (5/16)

Bid forms may be obtained from the Unit Manager or thru OLB. Bids may be submitted hardcopy or thru OLB. All hardcopy bids must be submitted on the bid form and in an envelope clearly identified as described in this section. NOTE: Only one bid form per bid envelope. Sealed bids must be submitted to the Unit office designated in the prospectus and must be submitted at or prior to the time established in the prospectus. The envelope should show on the outside (a) the sale name or number and (b) the date and time of bid opening, as shown in the prospectus. Bids received after the time specified in the sale prospectus are late bids and will be rejected.

It is possible for a bidder to submit multiple bids on a single sale. For example, a bid may be submitted hardcopy and a bid may be submitted thru OLB. Or, two bidders from the same company could both submit bids on the same sale. If this were to happen, the State would accept all bids received and award the contract accordingly. All bidding and contractual requirements would apply to all bids received.

5. Public Opening of Sealed Bids (7/16)

If conditions permit, the sealed bids will be publicly opened and posted at the time and place set in the prospectus.

If a bidder, present at a bid opening, has submitted bids on more than one sale, that bidder may withdraw their unopened bid envelopes or announce the withdrawal of their online bid after being declared the successful bidder on one sale.

6. Award of Contract (1/11)

Award of the contract will be made to the Bidder whose bid, conforming to the prospectus, is most advantageous to the State of Michigan on the basis of total value at rates bid for the estimated quantities. The State reserves the right to reject any bid or waive any minor irregularity in bids received. A written award mailed (or otherwise furnished) to the successful Bidder shall be deemed to result in a binding contract without further action by either party.

7. Down Payment (1/11)

The Bidder to whom award is made must make a down payment within 21 days of the sale award. The amount of the down payment will be calculated as shown in the Bond and Payment Schedule of this prospectus. Only cash may be used to meet this requirement.

8. Performance Security (1/11)

As guarantee of faithful performance, a cash bond, certificate of deposit, surety bond or irrevocable letter of credit (LOC) is required within 21 days of the sale award. The amount of the performance security is shown in the Bond and

Payment Schedule of this prospectus. If an LOC or surety is used, the coverage must extend for at least 6 months beyond the contract expiration.

9. Worker's Compensation (10/22)

Purchaser shall obtain worker's compensation insurance to cover claims under Michigan's Worker's Disability Compensation Act of 1969 or similar employee benefit act of any other state applicable to an employee. Verification of Worker's Disability Compensation Act Compliance must be completed and submitted within 21 days of contract award and prior to the issuance of the timber sale contract. In addition, if applicable, Notice of Exclusion or Certificate of Insurance must also be submitted.

10. Timber Sale Contract (10/22)

Additional conditions and requirements common to all timber sales are listed on the timber sale contract (R4031) and are available on line at www.michigan.gov/timber. Contact the Unit Manager for additional information or a sample contract. Within 21 days of the date of the award letter, the bidder must sign the contract and provide the required down payment, performance security, and verification of worker's disability compensation. The down payment and performance security shall be in accordance with the provisions of the timber sale contract, in the sums stated in this prospectus. If these actions are not taken, then the Bidder, the Bidder's corporation, and the corporation's principals may not be permitted to bid on State timber sales for a period of 3 months after the first offense, 6 months after the second offense, and 1 year after the third offense. An offense will only be counted against the Bidder for 5 years. In addition, the Bidder certifies that if awarded this contract, the Bidder will complete the timber sale contract in accordance with its terms and any modifications thereof including requirements to purchase, cut, and remove the included timber by the expiration date.

Payment Unit values in the State Forest Timber Sale Contract are calculated based on the advertised value of the Payment Unit as a percentage of the total advertised value of the contract. The advertised value of each Payment Unit is given in the Description of Timber by Payment Unit table on the Timber Sale Information page. For example, if the value of Payment Unit 1 is advertised as \$1,500 and the total Timber Sale value is advertised as \$10,000, the contract price for Payment Unit 1 will be 15% of the total bid price ($\$1,500/\$10,000 * 100$).

11. Disclaimer of Estimates and Bidder's Warranty of Inspection (10/22)

Before submitting this bid, the Bidder is advised and cautioned to inspect the sale area, review the requirements of the sale contract, and take other steps as may be reasonably necessary to ascertain the location, estimated volumes, construction estimates, and operating costs of the proposed sale. Failure to do so will not relieve the Bidder from responsibility for completing the contract.

The Bidder warrants that this bid is submitted solely on the basis of the Bidder's examination and inspection of the quality and quantity of the timber offered for sale and the Bidder's opinion of the value thereof and the costs of recovery. No reliance should be placed on the State of Michigan's estimates of timber quality, quantity or costs of recovery. Bidder further acknowledges that the State of Michigan: (i) expressly disclaims any warranty of fitness of timber for any purpose; (ii) offers this timber as is without any warranty of quality (merchantability) or quantity and (iii) expressly disclaims any warranty as to the quantity or quality of timber sold.

12. Certification and Chain-of-Custody (10/22)

Unless otherwise indicated in the contract under section 7 – Other Conditions of the Sale Specific Conditions & Requirements, the area encompassed by this timber sale is certified to the standards of the Forest Stewardship Council (FSC) - Certificate #SCS-FM/COC-00090N and the Sustainable Forestry Initiative (SFI) - Certificate #NSF-SFIS-5Y031-SF5. Forest products from this sale may be delivered to the mill as "FSC 100% and / or SFI certified" as long as the contractor hauling the forest products is chain-of-custody (COC) certified or covered under a COC certificate from the destination mill. The purchaser is responsible for maintaining COC after leaving the sale area.

13. Good Neighbor Authority (GNA) Requirements (10/22)

If the name of this timber sales contains the acronym GNA, it is authorized by the Good Neighbor Authority (GNA) and covered by various agreements between the U.S. Forest Service and the State. The timber sale occurs on federal land and the following conditions apply:

GNA contracts on US Forest Service land will not be awarded to purchasers on the Federal list of excluded parties. The System for Award Management (SAM) will be checked for active excluded parties prior to award of contract. In

addition, the Bidder to whom award is made must complete an Assurance Regarding Felony Conviction or Tax Delinquent Status for Corporate Applicants (AD-3031).

14. Good Neighbor Authority (GNA) Requirements, con't (10/22)

Bidder certifies, by signing this bid form, that to the best of Bidder's knowledge that the following representations are accurate and complete.

- a. That the Bidder and its principals are not presently debarred, suspended, proposed for debarment, declared ineligible, or voluntary excluded from timber sales (covered transactions) by any Federal department or agency.
- b. That the Bidder and its principals have not within a 3-year period preceding this bid been convicted of or had a civil judgment rendered against them for commission of fraud or a criminal offense in connection with obtaining , attempting to obtain, or performing a public (Federal, State, or local) transaction or contract under a public transaction; violation of Federal or State antitrust statutes or commission of embezzlement, theft, forgery, bribery, falsification or destruction of records, making false statements, or receiving stolen property.
- c. That the Bidder and its principals are not presently indicted for or otherwise criminally or civilly charged by a governmental entity (Federal, State, or local) with commission of any of the offenses enumerated in paragraph b of this certification.
- d. That the Bidder and its principals have not within a 3-year period preceding this bid had one or more public transactions (Federal, State, or local) terminated for breach or default of a timber or forest product contract.

Bidders that cannot certify this requirement, in whole or in part, shall submit an explanation with their bid.

Scott Bowen
Director

TIMBER SALE INFORMATION

Peshekee Supreme (32-004-25)
T48N, R30W, SEC. 12; T48N, R30W, SEC. 13.
Marquette County (Advertised Price \$5,589.25)

SALE NOTE: Four-year timber sale contract restricted to winter frozen during 12/1 to 4/1.

A timber sale contract for this lump sum, sealed bid timber sale will be awarded to the responsible bidder offering the highest sealed bid price. All units of volume listed below were estimated using the Inventory Manager computer program and the new Michigan taper model. Bids must be at or above the following advertised price for each product and species:

<u>PRODUCTS & SPECIES</u>	<u>ESTIMATED UNITS*</u>	<u>ADVERTISED PRICE</u>
Sawtimber		
Paper Birch	2.5 MBF	\$ 66.00 / MBF
Sugar Maple	0.8 MBF	\$ 160.00 / MBF
Pulpwood		
Balsam Fir	39 Cords	\$ 8.25 / Cord
Mixed Hardwood	281 Cords	\$ 9.25 / Cord
Mixed Spruce	40 Cords	\$ 8.55 / Cord
Paper Birch	85 Cords	\$ 9.75 / Cord
Quaking Aspen	66 Cords	\$ 18.25 / Cord

* The total volume is statistically estimated within plus (+) or minus (-) 20.77 percent. There are an estimated 518 cords on this timber sale, plus or minus 108 cords at the 95% confidence level. The estimated units are final and not subject to adjustment. Prospective bidders are urged to examine this timber and to make their own estimates of quantity and quality.

BOND AND PAYMENT SCHEDULE:

1. A bond in the amount of \$559.00 to insure faithful performance of the conditions of the contract will be deposited by the successful bidder within 21 days of the sale award.
2. Cutting in any sale or unit without the required advance payment would be considered a trespass.
3. Total payment must be paid in advance or according to the following schedule :
 - (a) Ten percent (10%) of the sale value must be paid within 21 days of the sale award.
 - (b) The 10% down payment will be credited towards the first unit cut.
 - (c) Payment for each of the following units must be made before cutting begins in that unit:

<u>PAYMENT UNIT NUMBER</u>	<u>PERCENT OF TOTAL SALE VALUE</u>
01	42.2%
02	12.5%
03	24.3%
04	21.0%

4. If no cutting takes place, the 10% down payment will not be refunded.
5. Operations on the contract issued will terminate on 06/30/2030.

SALE STATISTICS

Volumes were calculated in cubic feet using the Michigan taper model. Cubic foot volume includes all wood inside bark for the product indicated. For display purposes, cubic feet were converted to cords and MBF using a simple conversion factor, e.g. 79 cubic feet per cord and 185 cubic feet per MBF. The cubic foot volumes are precise; the cords and MBF volumes are not. Cubic foot volume cannot be directly converted to cords or boards with precision.

SALE VOLUMES

The total estimated sale volume may not equal the sum of the species/products due to the nature of statistical calculations associated with double sampling methodology.

<u>VOLUME</u>			<u>STATISTICAL RANGE IN CORDS</u>	
<u>TOTAL CUBIC FEET</u>	<u>TOTAL CORDS</u>	<u>PERCENT ERROR</u>	<u>MINIMUM</u>	<u>MAXIMUM</u>
40,883	518	20.77%	410	625

VDU VOLUMES

A VDU is a Volume Determination Unit. Volumes and their associated statistics are calculated at the VDU level and summarized to the sale level. There is often a one to one relationship between a VDU and a Payment Unit, but not always, depending on the cruise design. Refer to the VDU TO PAYMENT UNIT table.

	VOLUME			RANGE IN CORDS	
VDU	TOTAL CUBIC FEET	TOTAL CORDS	PERCENT ERROR	MINIMUM	MAXIMUM
64	16,459	208	35.98%	133	283
65	8,059	102	61.55%	39	165
67	4,716	60	41.62%	35	85
68	11,649	147	32.85%	99	196
TOTAL:	40,883	518		306	729

VDU TO PAYMENT UNIT

When a VDU is associated with more than one Payment Unit (PU), the VDU volumes are assigned to the PU based on acres of the VDU within the PU.

VDU	VDU ACRES	PU	PU ACRES
TOTAL:			

DESCRIPTION OF TIMBER BY PAYMENT UNIT (PU)

PU	MARKET GROUP	PRODUCT	QUANTITY	UNIT	ACRES	ADVERTISE PRICE
1	Paper Birch	Sawtimber	1.7	MBF	17.4	\$2,359.10
	Balsam Fir	Pulpwood	15	Cords		
	Mixed Hardwood		100	Cords		
	Black Cherry		2	Cords		
	Red Maple		50	Cords		
	Sugar Maple		48	Cords		
	Mixed Spruce		8	Cords		
	White Spruce		8	Cords		
	Paper Birch		41	Cords		
	Quaking Aspen		40	Cords		
2	Paper Birch	Sawtimber	0.8	MBF	10.2	\$699.30
	Sugar Maple		0.8	MBF		
	Mixed Hardwood	Pulpwood	55	Cords		
	Black Cherry		3	Cords		
	Red Maple		2	Cords		
	Sugar Maple		50	Cords		
	Paper Birch		1	Cords		
3	Balsam Fir	Pulpwood	21	Cords	10.5	\$1,357.70
	Mixed Hardwood		86	Cords		
	Red Maple		67	Cords		
	Sugar Maple		19	Cords		
	Mixed Spruce		9	Cords		
	Black Spruce		2	Cords		
	White Spruce		7	Cords		
	Paper Birch		32	Cords		
4	Balsam Fir	Pulpwood	3	Cords	8.4	\$1,173.15
	Mixed Hardwood		40	Cords		
	Black Cherry		5	Cords		
	Red Maple		23	Cords		
	Sugar Maple		12	Cords		
	Mixed Spruce		23	Cords		
	Black Spruce		11	Cords		
	White Spruce		12	Cords		
	Paper Birch		11	Cords		
	Quaking Aspen		26	Cords		
TOTAL:			3.3	MBF		
TOTAL:			511	Cords		

Sale Specific Conditions & Requirements

Sale Name: Peshekee Supreme

Sale Number: 32-004-25 Seq#: 2

1 - Sale Area

1.2 - Boundaries

1.2.1 - Painted Boundaries (9/19)

The sale boundary and Payment Unit boundaries are marked and identified by blue, red and yellow paint or are unmarked and identified by a road. Exterior sale boundary lines against private property are marked with blue paint. Exterior sale boundary lines against state are marked with red paint, with the exception of the boundaries that are against the Huron Bay Grade Road in Payment Unit(s) 1 and 4, which are unpainted and designated by the Huron Bay Grade Road. Interior Payment Unit boundaries are marked with yellow paint. Retention patches are marked with red paint; no harvesting activities may occur within these areas. The painted boundary line trees are not Included Timber and are to be protected unless marked with orange paint. Yellow painted trees designating an interior Payment Unit boundary are only to be cut when all surrounding Payment Units have been paid.

2 - Timber Specifications

2.1 - Included Timber

2.1.1 - Clearcut Unit(s) with Unmerchantable Trees (6/14)

Within Payment Unit(s) 1 and 4, cut all trees that are two (2) inches or more at DBH, except do not cut oak, yellow birch, cedar, hemlock, white pine, or red pine.

2.1.3 - Cut Tree Marked Unit(s) (12/08)

Within Payment Unit(s) 2, all trees are designated for cutting when marked with orange paint above and below stump height, regardless of merchantability. In addition, cut all spruce and fir which meet minimum piece specifications in 2.2 Utilization.

2.1.7 - Leave Tree Marked Unit(s) (6/14)

Within Payment Unit(s) 3, cut all trees that are two (2) inches or more at DBH, except do not cut oak, yellow birch, cedar, hemlock, red pine, white pine, or trees marked with green paint above and below stump height.

3 - Payments

3.4 - Damaged Timber

3.4.1 - Damaged Timber (12/24)

General Condition and Requirement 3.4 Damaged Timber, defines liquidated damages for undesigned live merchantable trees which are cut or injured. In addition, extreme care should be taken to avoid damage to tree seedlings and saplings.

No damage is acceptable to undesigned live merchantable trees. Within the Sale Area, if more than 5% of trees (> 4.5" DBH) within a specified area of the sale are damaged, liquidated damages will be assessed for all trees damaged. Rates will be in accordance with General Condition and Requirement 3.4 Damaged Timber.

4 - Transportation

4.1 - Construction

4.1.3 - Slash and Earthen Piles (8/04)

Piles or windrows of earth along roads and landings that have been widened or constructed shall be leveled. Slash from road maintenance or construction, including stumps, shall be dispersed throughout the sale.

4.1.4 - Timber Removed for Construction (3/23)

Trees cut or damaged in the process of pre-approved road, landing, or skid trail construction will be decked in an area separate from other Designated Timber and not removed until measured by the Sale Administrator. Payment will be made at contract prices or average prices, if not on the contract.

4.1.6 - Road Construction (4/24)

Construction of new roads or improvements of existing roads shall be done in such a way as to minimize the environmental

and visual impacts. Merchantable trees shall be cut and utilized unless otherwise directed. Non-merchantable trees shall be severed and laid flat on the ground. Slash shall be scattered, and not left in windrows and kept a minimum of 10 feet back from the road edge. Stumps shall be set upright, not left on edge, and be moved at least 10 feet away from the road edge. Disturbed soil shall be feathered into the woods and not left in berms or windrows.

4.1.7 - Road Closure (10/11)

All new roads built into the sale must be blocked to vehicle traffic upon completion of the sale. Overgrown roads that are reopened shall be considered new roads. In general, this will require constructing a four (4') foot high berm of stumps and logs covered with earth. Contact the Sale Administrator for specific details of design and placement.

4.2 - Maintenance

4.2.3 - Road maintenance (8/13)

The following road maintenance may be needed: Within 60 days of completion of hauling, or if no hauling occurs for 60 days, the road may need to be maintained and graded. This includes cleaning of drainage areas, grading, crowning and filling with gravel, if necessary. Damages will be assessed if grading/repair does not occur.

4.3 - Public Right-of-Way

4.3.2 - County R-O-W (12/06)

The County must be contacted prior to crossing or harvesting in the County Road R-O-W. This applies to all Payment Units along the Huron Bay Grade.

5 - Operations

5.1 - Notification

5.1.1 - Pre-sale Conference (10/16)

A pre-sale conference on site between the Purchaser and Sale Administrator is required prior to beginning any operations. The Unit Manager or his/her representative must be contacted at least 3 days in advance to schedule the conference.

5.2 - Conduct of Operations

5.2.3 - Operating Restrictions

5.2.3.1 - Operating Restrictions (9/11)

Within Payment Unit(s) 1-4, unless changed by written agreement, cutting and skidding are limited to winter frozen conditions during the period of December 1 to April 1. This restriction is due to areas of sensitive soils.

5.2.32 - Decking/Landing Restoration (9/13)

All decking and landing areas must have the surface area restored to a condition equal to or better than before. This is to ensure the proper regeneration of the stand. Wood debris, chips and "cookies" from trimmings must be removed or scattered away from landing and loading areas and may not be windrowed on the edge.

5.2.37 - No Decking Areas (12/08)

No decking is allowed within 50 feet of Huron Bay Grade Road without permission of the Unit Manager or his/her representative.

5.2.38 - No Decking Against Live Trees (2/04)

Cut products may not be decked against unmarked or designated leave trees.

5.4 - Soil Protection

5.4.1 - Rutting Restriction, General (7/16)

Operations are to cease immediately if equipment and weather conditions result in rutting of roads and/or skid trails which is 12 inches or greater in depth and 50 feet in length. The Unit Manager or his/her representative may restrict hauling and/or skidding if ruts exceed the specified depth. With the Unit Manager or his/her representative's approval, the Purchaser may return to the area when the risk of rutting has decreased.

5.4.4 - Slope Protection (9/19)

Skid trails and roads on slopes shall be water barred with slash and stumps as soon as use is complete to prevent erosion.

6 - Safety and Fire Prevention

6.2 - Signing

6.2.1 - Road Posting (10/20)

The Purchaser is responsible for posting and maintaining caution signs on the Huron Bay Grade prior to beginning operations. The road must be posted at appropriate distances from the Sale Area to warn of logging activity and truck traffic. Signs must be removed when harvest operations are suspended or completed. The Purchaser will provide these signs.



TIMBER SALE MAP

This information provided by authority of Part 525, 1994 PA 451, as amended.

Sale Number

32-004-25

Date

06/25/2025

Forest Management Unit

Gwinn Mgt Unit

County

Marquette

Mapped By: Gould

Cruised By: Gould

Scale

1:15,840

Page

1

Of

1

Township
48N

Range
30W

Section(s) and
Subdivision(s) Sec. 12 E1/2SE; Sec. 13 E1/2NW;

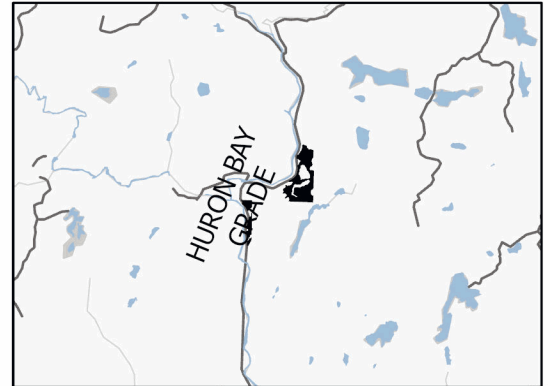
Cover Type

A = Aspen	J = Jack Pine	O = Oak	U = Upland Brush
B = Paper Birch	K = Rock	P = Lowland Poplar	UM = Upland Mix Forest
C = Cedar	L = Lowland Brush	Q = Mixed Swamp Conifer	V = Bog or Marsh
D = Treed Bog	LM = Lowland Mix Forest	R = Red Pine	W = White Pine
E = Swamp Hardwoods	M = Maple, Beech, Birch	S = Black Spruce	X = Non Stocked
F = Spruce/Fir	MC = Mixed Conifer	T = Tamarack	Y = Sand
G = Grass	MD = Mixed Deciduous	Z = Water	
H = Hemlock	N = Marsh		

Density

0 = Non Stocked	5 = Pole Timber Medium
1 = Seedling Sapling Poor	6 = Pole Timber Well
2 = Seedling Sapling Medium	7 = Saw Timber Poor
3 = Seedling Sapling Well	8 = Saw Timber Medium
4 = Pole Timber Poor	9 = Saw Timber Well

Locator Map 1:100,000



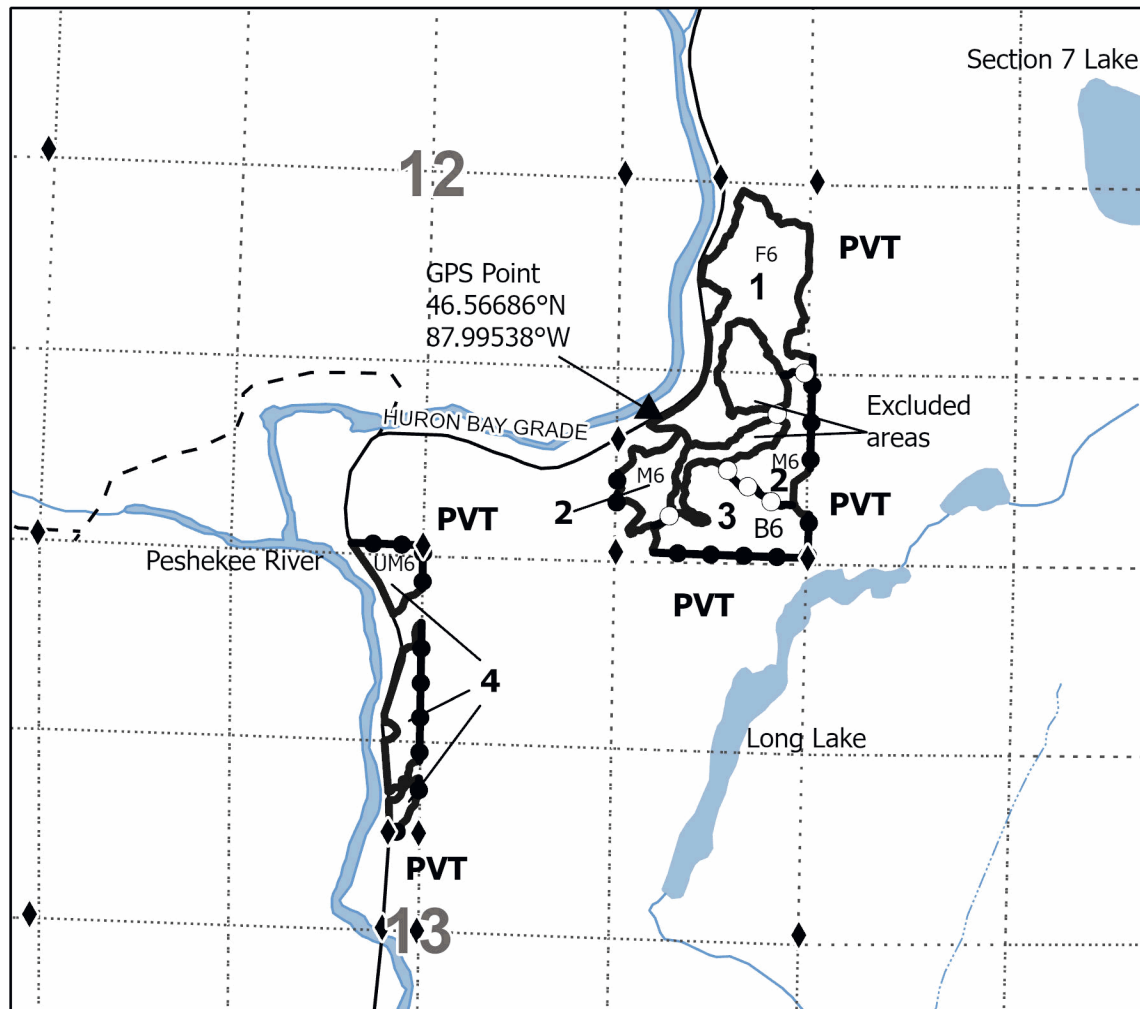
Payment Unit Number	Acres
1	17.4
2	10.2
3	10.5
4	8.4

Peshekee Supreme

46.5 Acres

Compartment 32215

0 0.25 0.5 1 Miles



Legend

- Against State (Red)
- Private Line (Blue)
- Payment Unit (Yellow)
- Lakes and Rivers
- Paved Road
- - - Private Gravel/Dirt
- ◆ Survey Grade Corner

Use QR Code to
open Map in App



TIMBER SALE INFORMATION

Perrin Bear (32-013-25)

T44N, R26W, SEC. 11; T44N, R26W, SEC. 12; T44N, R26W, SEC. 14.

Marquette County (Advertised Price \$54,528.00)

SALE NOTE: Units 1-10 have bark slip restriction from 4/15 - 7/15. Unit 12 is restricted to winter frozen conditions.

A recreation site such as a trail, pathway, or campground is within the sale area or the vicinity. Certain restrictions/specifications may be applicable including time restrictions. Access may be through other public land.

A timber sale contract for this lump sum, sealed bid timber sale will be awarded to the responsible bidder offering the highest sealed bid price. All units of volume listed below were estimated using the Inventory Manager computer program and the new Michigan taper model. Bids must be at or above the following advertised price for each product and species:

<u>PRODUCTS & SPECIES</u>	<u>ESTIMATED UNITS*</u>		<u>ADVERTISED PRICE</u>
Sawtimber			
Paper Birch	6.8	MBF	\$ 83.00 / MBF
Red Maple	128.6	MBF	\$ 84.00 / MBF
Sugar Maple	92.3	MBF	\$ 200.00 / MBF
Pulpwood			
Balsam Fir	124	Cords	\$ 10.35 / Cord
Mixed Hardwood	1,855	Cords	\$ 11.60 / Cord
Mixed Spruce	85	Cords	\$ 10.70 / Cord
Quaking Aspen	40	Cords	\$ 22.80 / Cord
Tamarack	6	Cords	\$ 13.05 / Cord

* The total volume is statistically estimated within plus (+) or minus (-) 12.93 percent. There are an estimated 2,642 cords on this timber sale, plus or minus 342 cords at the 95% confidence level. The estimated units are final and not subject to adjustment. Prospective bidders are urged to examine this timber and to make their own estimates of quantity and quality.

BOND AND PAYMENT SCHEDULE:

1. A bond in the amount of \$5,453.00 to insure faithful performance of the conditions of the contract will be deposited by the successful bidder within 21 days of the sale award.
2. Cutting in any sale or unit without the required advance payment would be considered a trespass.
3. Total payment must be paid in advance or according to the following schedule :
 - (a) Ten percent (10%) of the sale value must be paid within 21 days of the sale award.
 - (b) The 10% down payment will be credited towards the first unit cut.
 - (c) Payment for each of the following units must be made before cutting begins in that unit:

<u>PAYMENT UNIT NUMBER</u>	<u>PERCENT OF TOTAL SALE VALUE</u>
01	4.0%
02	5.6%
03	2.0%
04	13.8%
05	12.9%
06	12.5%
07	14.9%
08	8.0%
09	9.2%
10	5.6%
11	3.9%
12	7.6%

4. If no cutting takes place, the 10% down payment will not be refunded.
5. Operations on the contract issued will terminate on 06/30/2030.

SALE STATISTICS

Volumes were calculated in cubic feet using the Michigan taper model. Cubic foot volume includes all wood inside bark for the product indicated. For display purposes, cubic feet were converted to cords and MBF using a simple conversion factor, e.g. 79 cubic feet per cord and 185 cubic feet per MBF. The cubic foot volumes are precise; the cords and MBF volumes are not. Cubic foot volume cannot be directly converted to cords or boards with precision.

SALE VOLUMES

The total estimated sale volume may not equal the sum of the species/products due to the nature of statistical calculations associated with double sampling methodology.

VOLUME			STATISTICAL RANGE IN CORDS	
TOTAL CUBIC FEET	TOTAL CORDS	PERCENT ERROR	MINIMUM	MAXIMUM
208,738	2,642	12.93%	2,301	2,984

VDU VOLUMES

A VDU is a Volume Determination Unit. Volumes and their associated statistics are calculated at the VDU level and summarized to the sale level. There is often a one to one relationship between a VDU and a Payment Unit, but not always, depending on the cruise design. Refer to the VDU TO PAYMENT UNIT table.

	VOLUME			RANGE IN CORDS	
VDU	TOTAL CUBIC FEET	TOTAL CORDS	PERCENT ERROR	MINIMUM	MAXIMUM
22	14,186	180	25.66%	133	226
27	22,226	281	38.49%	173	390
39	140,042	1,773	17.30%	1,466	2,079
64	32,283	409	25.66%	304	513
TOTAL:	208,738	2,642		2,076	3,208

VDU TO PAYMENT UNIT

When a VDU is associated with more than one Payment Unit (PU), the VDU volumes are assigned to the PU based on acres of the VDU within the PU.

VDU	VDU ACRES	PU	PU ACRES
TOTAL:			

DESCRIPTION OF TIMBER BY PAYMENT UNIT (PU)

PU	MARKET GROUP	PRODUCT	QUANTITY	UNIT	ACRES	ADVERTISE PRICE
1	Red Maple	Sawtimber	5.5	MBF	16.5	\$2,167.10
	Sugar Maple		1.4	MBF		
	Balsam Fir	Pulpwood	2	Cords		
	Mixed Hardwood		110	Cords		
	<i>Red Maple</i>		71	<i>Cords</i>		
	<i>Sugar Maple</i>		38	<i>Cords</i>		
	<i>Yellow Birch</i>		1	<i>Cords</i>		
	Mixed Spruce		12	Cords		
	<i>Black Spruce</i>		1	<i>Cords</i>		
	<i>White Spruce</i>		11	<i>Cords</i>		
2	Red Maple	Sawtimber	7.8	MBF	23.1	\$3,034.55
	Sugar Maple		1.9	MBF		
	Balsam Fir	Pulpwood	3	Cords		
	Mixed Hardwood		154	Cords		
	<i>Red Maple</i>		100	<i>Cords</i>		
	<i>Sugar Maple</i>		53	<i>Cords</i>		
	<i>Yellow Birch</i>		1	<i>Cords</i>		
	Mixed Spruce		17	Cords		
	<i>Black Spruce</i>		1	<i>Cords</i>		
	<i>White Spruce</i>		16	<i>Cords</i>		
3	Red Maple	Sawtimber	2.7	MBF	8.0	\$1,078.45
	Sugar Maple		0.7	MBF		
	Balsam Fir	Pulpwood	1	Cords		
	Mixed Hardwood		54	Cords		
	<i>Red Maple</i>		35	<i>Cords</i>		
	<i>Sugar Maple</i>		18	<i>Cords</i>		
	<i>Yellow Birch</i>		1	<i>Cords</i>		
	Mixed Spruce		7	Cords		
	<i>Black Spruce</i>		1	<i>Cords</i>		
	<i>White Spruce</i>		6	<i>Cords</i>		
4	Red Maple	Sawtimber	19.7	MBF	27.3	\$7,506.70
	Sugar Maple		15.8	MBF		
	Balsam Fir	Pulpwood	18	Cords		
	Mixed Hardwood		216	Cords		
	<i>Red Maple</i>		95	<i>Cords</i>		
	<i>Sugar Maple</i>		121	<i>Cords</i>		
5	Red Maple	Sawtimber	18.4	MBF	25.5	\$7,024.75
	Sugar Maple		14.8	MBF		
	Balsam Fir	Pulpwood	17	Cords		
	Mixed Hardwood		202	Cords		
	<i>Red Maple</i>		89	<i>Cords</i>		
	<i>Sugar Maple</i>		113	<i>Cords</i>		
6	Red Maple	Sawtimber	18.0	MBF	24.9	\$6,842.80
	Sugar Maple		14.4	MBF		
	Balsam Fir	Pulpwood	16	Cords		
	Mixed Hardwood		197	Cords		
	<i>Red Maple</i>		87	<i>Cords</i>		
	<i>Sugar Maple</i>		110	<i>Cords</i>		
7	Red Maple	Sawtimber	21.6	MBF	29.9	\$8,220.95
	Sugar Maple		17.2	MBF		
	Balsam Fir	Pulpwood	21	Cords		
	Mixed Hardwood		237	Cords		
	<i>Red Maple</i>		104	<i>Cords</i>		
	<i>Sugar Maple</i>		133	<i>Cords</i>		
8	Red Maple	Sawtimber	11.5	MBF	15.9	\$4,359.50

DESCRIPTION OF TIMBER BY PAYMENT UNIT (PU), CON'T

PU	MARKET GROUP	PRODUCT	QUANTITY	UNIT	ACRES	ADVERTISE PRICE
8 con't	Sugar Maple	Sawtimber	9.2	MBF		
	Balsam Fir	Pulpwood	10	Cords		
	Mixed Hardwood		125	Cords		
	Red Maple		55	Cords		
	Sugar Maple		70	Cords		
9	Red Maple	Sawtimber	13.2	MBF	18.2	\$5,003.40
	Sugar Maple		10.5	MBF		
	Balsam Fir	Pulpwood	12	Cords		
	Mixed Hardwood		144	Cords		
	Red Maple		63	Cords		
	Sugar Maple		81	Cords		
10	Red Maple	Sawtimber	8.0	MBF	11.0	\$3,033.65
	Sugar Maple		6.4	MBF		
	Balsam Fir	Pulpwood	7	Cords		
	Mixed Hardwood		87	Cords		
	Red Maple		38	Cords		
	Sugar Maple		49	Cords		
11	Balsam Fir	Pulpwood	4	Cords	9.8	\$2,106.70
	Mixed Hardwood		162	Cords		
	Red Maple		151	Cords		
	Yellow Birch		11	Cords		
	Mixed Spruce		11	Cords		
	Black Spruce		5	Cords		
	White Spruce		6	Cords		
	Quaking Aspen		3	Cords		
12	Paper Birch	Sawtimber	6.8	MBF	17.0	\$4,149.45
	Red Maple		2.2	MBF		
	Balsam Fir	Pulpwood	13	Cords		
	Mixed Hardwood		167	Cords		
	Paper Birch		75	Cords		
	Red Maple		87	Cords		
	Sugar Maple		5	Cords		
	Mixed Spruce		38	Cords		
	Black Spruce		38	Cords		
	Quaking Aspen		37	Cords		
	Tamarack		6	Cords		
TOTAL:			227.7	MBF		
TOTAL:			2,110	Cords		

Sale Specific Conditions & Requirements

Sale Name: Perrin Bear

Sale Number: 32-013-25 Seq#: 1

1 - Sale Area

1.2 - Boundaries

1.2.1 - Painted Boundaries (9/19)

The sale boundary and Payment Unit boundaries are marked and identified by blue, red and yellow paint. Exterior sale boundary lines against private property are marked with blue paint. Exterior sale boundary lines against state are marked with red paint. Interior Payment Unit boundaries are marked with yellow paint. The painted boundary line trees are not Included Timber and are to be protected unless marked with orange paint. Yellow painted trees designating an interior Payment Unit boundary are only to be cut when all surrounding Payment Units have been paid.

2 - Timber Specifications

2.1 - Included Timber

2.1.1 - Clearcut Unit(s) with Unmerchantable Trees (6/14)

Within Payment Unit(s) 12, cut all trees that are two (2) inches or more at DBH, except do not cut cedar, hemlock, yellow birch, or white pine.

2.1.3 - Cut Tree Marked Unit(s) (12/08)

Within Payment Unit(s) 1-10, all trees are designated for cutting when marked with orange paint above and below stump height, regardless of merchantability. In addition, cut all spruce and fir trees that meet minimum piece specifications in General Condition and Requirement 2.2 Utilization.

2.1.7 - Leave Tree Marked Unit(s) (6/14)

Within Payment Unit(s) 11, cut all trees that are two (2) inches or more at DBH, except do not cut cedar, hemlock, white pine, or trees marked with green paint above and below stump height.

3 - Payments

3.4 - Damaged Timber

3.4.1 - Damaged Timber (12/24)

General Condition and Requirement 3.4 Damaged Timber, defines liquidated damages for undesignated live merchantable trees which are cut or injured. In addition, extreme care should be taken to avoid damage to tree seedlings and saplings.

Within the Sale Area, if more than 25% of the tree seedlings or saplings (1/4" to 4.5" DBH) within a specified portion of the Sale Area are damaged, liquidated damages will be assessed at \$150 per acre for all acreage within that specified portion of the Sale Area that was damaged.

4 - Transportation

4.1 - Construction

4.1.3 - Slash and Earthen Piles (8/04)

Piles or windrows of earth along roads and landings that have been widened or constructed shall be leveled. Slash from road maintenance or construction, including stumps, shall be dispersed throughout the sale.

4.1.4 - Timber Removed for Construction (3/23)

Trees cut or damaged in the process of pre-approved road, landing, or skid trail construction will be decked in an area separate from other Designated Timber and not removed until measured by the Sale Administrator. Payment will be made at contract prices or average prices, if not on the contract.

4.1.6 - Road Construction (4/24)

Construction of new roads or improvements of existing roads shall be done in such a way as to minimize the environmental and visual impacts. Merchantable trees shall be cut and utilized unless otherwise directed. Non-merchantable trees shall be severed and laid flat on the ground. Slash shall be scattered, and not left in windrows and kept a minimum of 10 feet back

from the road edge. Stumps shall be set upright, not left on edge, and be moved at least 10 feet away from the road edge. Disturbed soil shall be feathered into the woods and not left in berms or windrows.

4.1.7 - Road Closure (10/11)

All new roads built into the sale must be blocked to vehicle traffic upon completion of the sale. Overgrown roads that are reopened shall be considered new roads. In general, this will require constructing a four (4') foot high berm of stumps and logs covered with earth. Temporary berms may be required if no sale activity occurs for 30 or more consecutive days. Contact the Sale Administrator for specific details of design and placement.

4.2 - Maintenance

4.2.1 - Hauling Restriction (12/08)

Hauling may be restricted on forest roads by the Unit Manager or his/her representative. The restriction may occur during wet weather conditions.

4.2.2 - Fill Material (4/07)

To maintain roads, fill material may be needed in areas where "holes" exist or may be expected to develop. This fill material should be placed before trucking begins. Contact the Sale Administrator regarding the availability of onsite sand or gravel from adjacent State-owned lands.

4.2.3 - Road maintenance (8/13)

The following road maintenance may be needed: Within 60 days of completion of hauling, or if no hauling occurs for 60 days, the road may need to be maintained and graded. This includes cleaning of drainage areas, grading, crowning and filling with gravel, if necessary. Damages will be assessed if grading/repair does not occur.

5 - Operations

5.1 - Notification

5.1.1 - Pre-sale Conference (10/16)

A pre-sale conference between the Purchaser and Sale Administrator is required prior to beginning any operations. The Unit Manager or his/her representative must be contacted at least 5 days in advance to schedule the conference.

5.2 - Conduct of Operations

5.2.3 - Operating Restrictions

5.2.3.1 - Operating Restrictions (9/11)

Within Payment Unit(s) 12, unless changed by written agreement, cutting and skidding are limited to the period of December 1 to April 1. This restriction is due to wet soils.

5.2.3.3 - Bark Slippage Restriction (3/09)

Within Payment Unit(s) 1-10, unless changed by written agreement, cutting and skidding are not permitted during the period of April 15 to July 15. This restriction is because of bark slippage.

5.2.22 - Operating Caution

5.2.22.1 - Operating Caution (6/11)

It is recommended, but not required, that within Payment Unit(s) 11, cutting and skidding occur during dry summer or frozen winter conditions. The reason for the recommendation is due to areas of wet soils.

5.2.32 - Decking/Landing Restoration (9/13)

All decking and landing areas must have the surface area restored to a condition equal to or better than before. This is to ensure the proper regeneration of the stand. Wood debris, chips and "cookies" from trimmings must be removed or scattered away from landing and loading areas and may not be windrowed on the edge.

5.2.38 - No Decking Against Live Trees (2/04)

Cut products may not be decked against unmarked or designated leave trees.

5.2.39 - ORV Trail/Route Protection (4/18)

Trail 33 is an ORV trail or route and is shown on the Timber Sale Map. Do not cut trees or damage posts with yellow ORV markers. All stumps within 20 feet of the trail must be cut flush with the ground. Maintain a 20-foot-wide slash, debris, and

rut free zone daily using the ORV trail or route as the centerline.

5.2.41 - Snowmobile Trail Protection (9/11)

Trail 33 is a snowmobile trail and is shown on the Timber Sale Map. Do not cut or damage posts with orange trail markers or traffic control signs. If the trail is to be used for hauling during the snowmobile season (approximately December 1 to March 31) a snow-covered base must be left on the snowmobile trail, and any trucking of forest products shall only occur from Monday to Thursday during daylight hours. Maintain a 20-foot-wide slash, debris, and rut free zone daily using the snowmobile trail as the centerline. No decking of forest products will be permitted along the snowmobile trail. All stumps within 20 feet of the snowmobile trail must be cut at ground level.

5.4 - Soil Protection

5.4.1 - Rutting Restriction, General (7/16)

Operations are to cease immediately if equipment and weather conditions result in rutting of roads and/or skid trails which are 12 inches or greater in depth and 50 feet in length. The Unit Manager or his/her representative may restrict hauling and/or skidding if ruts exceed the specified depth. With the Unit Manager or his/her representative's approval, the Purchaser may return to the area when the risk of rutting has decreased.

6 - Safety and Fire Prevention

6.2 - Signing

6.2.1 - Road Posting (10/20)

The Purchaser is responsible for posting and maintaining caution signs on Perrin Brothers Road and Miller Creek Road prior to beginning operations. The road must be posted at appropriate distances from the Sale Area to warn of logging activity and truck traffic. Signs must be removed when harvest operations are suspended or completed. The Purchaser will provide these signs.

6.2.2 - Snowmobile Trail Posting (10/20)

The Purchaser is responsible for posting and maintaining caution signs on Trail 32 and Trail 33 prior to beginning operations during the snowmobile season (approximately December 1 to March 31). The trail must be posted at appropriate distances from the Sale Area to warn of logging activity and truck traffic. Signs must be removed when harvest operations are suspended or completed. The Purchaser will provide these signs.

**TIMBER SALE MAP**

This information provided by authority of Part 525, 1994 PA 451, as amended.

Sale Number

32-013-25

Date

08/12/2025

Forest Management Unit

Gwinn Mgt Unit

County

Marquette

Mapped By: Siler

Cruised By: Gould & Siler

Scale

1:13,930

Page

1

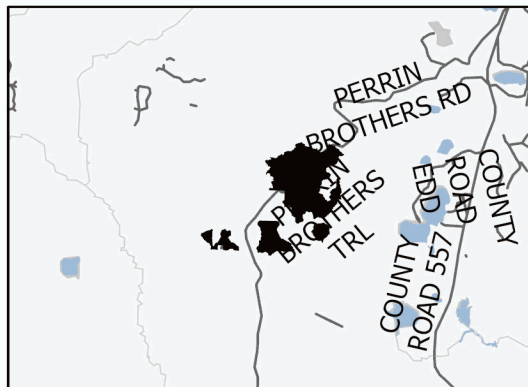
Of

1Township
44NRange
26WSection(s) and
Subdivision(s) Sec. 11 NE,S1/2SW,NESE,S1/2SE; Sec. 12 W1/2NW,W1/2SW; Sec. 14 NENW,NWNE;**Cover Type**

A = Aspen	J = Jack Pine	O = Oak	U = Upland Brush
B = Paper Birch	K = Rock	P = Lowland Poplar	UM = Upland Mix Forest
C = Cedar	L = Lowland Brush	Q = Mixed Swamp Conifer	V = Bog or Marsh
D = Treed Bog	LM = Lowland Mix Forest	R = Red Pine	W = White Pine
E = Swamp Hardwoods	M = Maple, Beech, Birch	S = Black Spruce	X = Non Stocked
F = Spruce/Fir	MC = Mixed Conifer	T = Tamarack	Y = Sand
G = Grass	MD = Mixed Deciduous	Z = Water	
H = Hemlock	N = Marsh		

Density

0 = Non Stocked	5 = Pole Timber Medium
1 = Seedling Sapling Poor	6 = Pole Timber Well
2 = Seedling Sapling Medium	7 = Saw Timber Poor
3 = Seedling Sapling Well	8 = Saw Timber Medium
4 = Pole Timber Poor	9 = Saw Timber Well

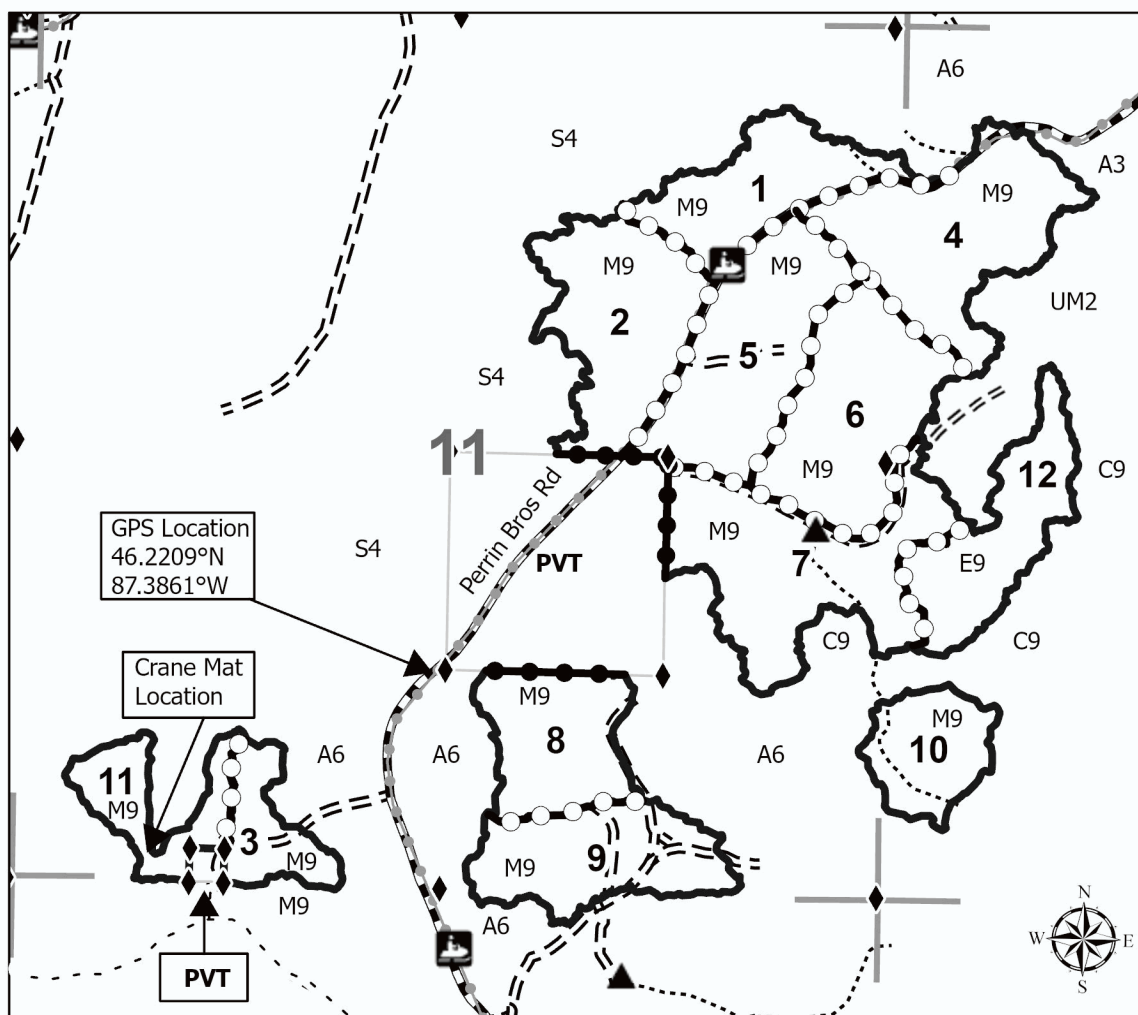
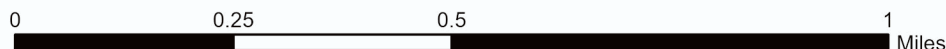
Locator Map 1:100,000

Payment Unit Number	Acres	Payment Unit Number	Acres
1	16.5	7	29.9
2	23.1	8	15.9
3	8	9	18.2
4	27.3	10	11
5	25.5	11	9.8
6	24.9	12	17

PERRIN BEAR

COMPARTMENT 49

227.1 ACRES

**Legend**

- Against State (Red)
- Private Line (Blue)
- Payment Unit (Yellow)
- State Boundary
- Snowmobile/ORV Trail
- Forest Access Route
- Administrative Access Only
- Paved Road
- Government Gravel/Dirt
- Private Gravel/Dirt
- Survey Grade Corner
- Berm
- Section Corner



TIMBER SALE INFORMATION

Anderson Lake (32-019-25)

T44N, R25W, SEC. 7; T44N, R26W, SEC. 12.
Marquette County (Advertised Price \$28,125.55)

SALE NOTE: No operations from 12/15 - 7/15 due to the Anderson Lake ski trails and campground.

A recreation site such as a trail, pathway, or campground is within the sale area or the vicinity. Certain restrictions/specifications may be applicable including time restrictions.

A timber sale contract for this lump sum, sealed bid timber sale will be awarded to the responsible bidder offering the highest sealed bid price. All units of volume listed below were estimated using the Inventory Manager computer program and the new Michigan taper model. Bids must be at or above the following advertised price for each product and species:

<u>PRODUCTS & SPECIES</u>	<u>ESTIMATED UNITS*</u>		<u>ADVERTISED PRICE</u>
Sawtimber			
Paper Birch	9.2	MBF	\$ 83.00 / MBF
Red Maple	6.6	MBF	\$ 84.00 / MBF
Pulpwood			
Balsam Fir	8	Cords	\$ 10.35 / Cord
Mixed Aspen	499	Cords	\$ 22.80 / Cord
Paper Birch	301	Cords	\$ 12.20 / Cord
Red Maple	860	Cords	\$ 11.60 / Cord
Red Pine	6	Cords	\$ 47.20 / Cord
White Pine	71	Cords	\$ 13.15 / Cord
White Spruce	31	Cords	\$ 10.70 / Cord
Yellow Birch	13	Cords	\$ 11.60 / Cord

* The total volume is statistically estimated within plus (+) or minus (-) 12.94 percent. There are an estimated 1,826 cords on this timber sale, plus or minus 236 cords at the 95% confidence level. The estimated units are final and not subject to adjustment. Prospective bidders are urged to examine this timber and to make their own estimates of quantity and quality.

BOND AND PAYMENT SCHEDULE:

1. A bond in the amount of \$2,813.00 to insure faithful performance of the conditions of the contract will be deposited by the successful bidder within 21 days of the sale award.
2. Cutting in any sale or unit without the required advance payment would be considered a trespass.
3. Total payment must be paid in advance or according to the following schedule:
 - (a) Ten percent (10%) of the sale value must be paid within 21 days of the sale award.
 - (b) The 10% down payment will be credited towards the first unit cut.
 - (c) Payment for each of the following units must be made before cutting begins in that unit:

<u>PAYMENT UNIT NUMBER</u>	<u>PERCENT OF TOTAL SALE VALUE</u>
01	0.6%
02	10.3%
03	21.2%
04	7.4%
05	21.0%
06	23.2%
07	16.3%

4. If no cutting takes place, the 10% down payment will not be refunded.
5. Operations on the contract issued will terminate on 08/31/2030.

SALE STATISTICS

Volumes were calculated in cubic feet using the Michigan taper model. Cubic foot volume includes all wood inside bark for the product indicated. For display purposes, cubic feet were converted to cords and MBF using a simple conversion factor, e.g. 79 cubic feet per cord and 185 cubic feet per MBF. The cubic foot volumes are precise; the cords and MBF volumes are not. Cubic foot volume cannot be directly converted to cords or boards with precision.

SALE VOLUMES

The total estimated sale volume may not equal the sum of the species/products due to the nature of statistical calculations associated with double sampling methodology.

VOLUME			STATISTICAL RANGE IN CORDS	
TOTAL CUBIC FEET	TOTAL CORDS	PERCENT ERROR	MINIMUM	MAXIMUM
144,249	1,826	12.94%	1,590	2,062

VDU VOLUMES

A VDU is a Volume Determination Unit. Volumes and their associated statistics are calculated at the VDU level and summarized to the sale level. There is often a one to one relationship between a VDU and a Payment Unit, but not always, depending on the cruise design. Refer to the VDU TO PAYMENT UNIT table.

	VOLUME			RANGE IN CORDS	
VDU	TOTAL CUBIC FEET	TOTAL CORDS	PERCENT ERROR	MINIMUM	MAXIMUM
5	772	10	182.59%	0	28
12	11,047	140	33.50%	93	187
49	32,134	407	22.08%	317	497
51	86,612	1,096	18.55%	893	1,300
52	13,684	173	43.51%	98	249
TOTAL:	144,249	1,826		1,401	2,259

VDU TO PAYMENT UNIT

When a VDU is associated with more than one Payment Unit (PU), the VDU volumes are assigned to the PU based on acres of the VDU within the PU.

VDU	VDU ACRES	PU	PU ACRES
TOTAL:			

DESCRIPTION OF TIMBER BY PAYMENT UNIT (PU)

PU	MARKET GROUP	PRODUCT	QUANTITY	UNIT	ACRES	ADVERTISE PRICE
1	Balsam Fir Red Maple Red Pine White Pine	Pulpwood	1 1 1 7	Cords Cords Cords Cords	1.6	\$161.20
2	Mixed Aspen <i>Quaking Aspen</i> Paper Birch Red Maple White Spruce	Pulpwood	80 80 29 46 18	Cords Cords Cords Cords Cords	8.9	\$2,904.00
3	Paper Birch Red Maple Balsam Fir Mixed Aspen <i>B. T. Aspen</i> <i>Quaking Aspen</i> Paper Birch Red Maple White Spruce Yellow Birch	Sawtimber Pulpwood	5.0 2.0 1 72 54 18 76 227 6 8	MBF MBF Cords Cords Cords Cords Cords Cords Cords Cords	21.4	\$5,952.35
4	Mixed Aspen <i>Quaking Aspen</i> Paper Birch Red Maple Red Pine White Pine	Pulpwood	16 16 8 47 5 64	Cords Cords Cords Cords Cords Cords	19.9	\$2,085.20
5	Paper Birch Red Maple Balsam Fir Mixed Aspen <i>B. T. Aspen</i> <i>Quaking Aspen</i> Paper Birch Red Maple White Spruce Yellow Birch	Sawtimber Pulpwood	1.5 1.6 2 115 90 25 65 187 2 2	MBF MBF Cords Cords Cords Cords Cords Cords Cords Cords	25.3	\$5,908.40
6	Paper Birch Red Maple Balsam Fir Mixed Aspen <i>B. T. Aspen</i> <i>Quaking Aspen</i> Paper Birch Red Maple White Spruce Yellow Birch	Sawtimber Pulpwood	1.6 1.8 2 127 99 28 72 207 3 2	MBF MBF Cords Cords Cords Cords Cords Cords Cords Cords	28.0	\$6,535.20
7	Paper Birch Red Maple Balsam Fir Mixed Aspen <i>B. T. Aspen</i> <i>Quaking Aspen</i> Paper Birch Red Maple White Spruce Yellow Birch	Sawtimber Pulpwood	1.1 1.2 2 89 69 20 51 145 2 1	MBF MBF Cords Cords Cords Cords Cords Cords Cords Cords	19.6	\$4,579.20

TOTAL:	15.8	MBF
TOTAL:	1,789	Cords

Sale Specific Conditions & Requirements

Sale Name: Anderson Lake

Sale Number: 32-019-25 Seq#: 1

1 - Sale Area

1.2 - Boundaries

1.2.1 - Painted Boundaries (9/19)

The sale boundary and Payment Unit boundaries are marked and identified by red and yellow paint. Exterior sale boundary lines against state are marked with red paint. Interior Payment Unit boundaries are marked with yellow paint. The painted boundary line trees are not Included Timber and are to be protected unless marked with orange paint. Yellow painted trees designating an interior Payment Unit boundary are only to be cut when all surrounding Payment Units have been paid.

2 - Timber Specifications

2.1 - Included Timber

2.1.1 - Clearcut Unit(s) with Unmerchantable Trees (6/14)

Within Payment Unit(s) 2-3 and 5-7, cut all trees that are two (2) inches or more at DBH, except do not cut oak, cedar, hemlock, white pine, red pine, or jack pine.

2.1.3 - Cut Tree Marked Unit(s) (12/08)

Within Payment Unit(s) 1 & 4, all trees are designated for cutting when marked with orange paint above and below stump height, regardless of merchantability.

3 - Payments

3.4 - Damaged Timber

3.4.1 - Damaged Timber (12/24)

General Condition and Requirement 3.4 Damaged Timber, defines liquidated damages for undesigned live merchantable trees which are cut or injured. In addition, extreme care should be taken to avoid damage to tree seedlings and saplings.

Within the Sale Area, if more than 25% of the tree seedlings or saplings (1/4" to 4.5" DBH) within a specified portion of the Sale Area are damaged, liquidated damages will be assessed at \$150 per acre for all acreage within that specified portion of the Sale Area that was damaged.

No damage is acceptable to undesigned live merchantable trees. Within the Sale Area, if more than 10% of trees (> 4.5" DBH) within a specified area of the sale are damaged, liquidated damages will be assessed for all trees damaged. Rates will be in accordance with General Condition and Requirement 3.4 Damaged Timber.

4 - Transportation

4.1 - Construction

4.1.3 - Slash and Earthen Piles (8/04)

Piles or windrows of earth along roads and landings that have been widened or constructed shall be leveled. Slash from road maintenance or construction, including stumps, shall be dispersed throughout the sale.

4.1.4 - Timber Removed for Construction (3/23)

Trees cut or damaged in the process of pre-approved road, landing, or skid trail construction will be decked in an area separate from other Designated Timber and not removed until measured by the Sale Administrator. Payment will be made at contract prices or average prices, if not on the contract.

4.1.6 - Road Construction (4/24)

Improvements of existing roads shall be done in such a way as to minimize the environmental and visual impacts.

Merchantable trees shall be cut and utilized unless otherwise directed. Non-merchantable trees shall be severed and laid flat on the ground. Slash shall be scattered, and not left in windrows and kept a minimum of 10 feet back from the road edge.

Stumps shall be set upright, not left on edge, and be moved at least 10 feet away from the road edge. Disturbed soil shall be feathered into the woods and not left in berms or windrows.

4.1.12 - No New Roads (1/12)

No new roads will be permitted in any Payment Unit. All operations are limited to existing roads. Only skid trails will be allowed. New turn arounds must be approved by the Sale Administrator. Trucking will be allowed on the ski trails. Contact the Sale Administrator before using these trails.

4.2 - Maintenance

4.2.2 - Fill Material (4/07)

To maintain roads, fill material may be needed in areas where "holes" exist or may be expected to develop. This fill material should be placed before trucking begins. Contact the Sale Administrator regarding the availability of onsite sand or gravel from adjacent State-owned lands. In addition, the Purchaser is required to spread 50 yards of 22A road gravel on the Anderson Lake Campground Road or stockpile in the area at the direction of the Sale Administrator.

4.2.3 - Road maintenance (8/13)

The following road maintenance may be needed: Within 60 days of completion of hauling, or if no hauling occurs for 60 days, the road may need to be maintained and graded. This includes cleaning of drainage areas, grading, crowning and filling with gravel, if necessary. Damages will be assessed if grading/repair does not occur. A road grader will be needed on the road to the Anderson Lake Campground.

5 - Operations

5.1 - Notification

5.1.1 - Pre-sale Conference (10/16)

A pre-sale conference between the Purchaser and Sale Administrator is required prior to beginning any operations. The Unit Manager or his/her representative must be contacted at least 21 days in advance to schedule the conference and each time the Purchaser would like to move back into the sale. This is to give DNR Parks workers time to close trails and notify the public of logging activity.

5.2 - Conduct of Operations

5.2.3 - Operating Restrictions

5.2.3.1 - Operating Restrictions (9/11)

Within Payment Unit(s) 1-7, unless changed by written agreement, cutting, skidding, and hauling are limited to the period of July 15 to December 15. This restriction is due to ski trails in the Sale Area.

5.2.3.2 - Operating Restrictions (9/11)

Within Payment Unit(s) 1-7, cutting, skidding, and hauling are limited to the period of 8am-8pm, Monday-Friday. This restriction is because of the close proximity to the Anderson Lake Campground.

5.2.17 - Timber Mats and Interlocking Composite Mats (5/23)

Some skid trails may require extra protection such as that afforded by timber mats, interlocking composite mats, or another approved system. Approximately 200 feet of road or trail will need extra protection at 2 locations shown on the Timber Sale Map. If available, mats may be borrowed from the DNR. A Timber Sale Contract Amendment will be used to document the Purchaser's use of the DNR's mats. Contact the Sale Administrator regarding availability and pick-up. Timber mats are available from various field offices. Composite mats are only available from the Grayling field office and the Marquette ICC. The Purchaser is responsible for picking up and hauling the mats to and from the site. The composite mats will require DNR staff onsite for installation and removal. Contact the Sale Administrator to schedule at least 30 days before desired install/removal date. All mats must be cleaned prior to drop off. This may include, but is not limited to, power washing and brushing to remove mud and debris. A charge of \$700.00 per timber mat and \$2,000.00 per composite mat will be assessed for all damaged or non-returned mats. Damage for the crane/timber mats is defined as three or more broken cants. Damage for the composite mats is defined as cracked or broken mats.

5.2.32 - Decking/Landing Restoration (9/13)

All decking and landing areas must have the surface area restored to a condition equal to or better than before. This is to ensure the proper regeneration of the stand. Wood debris, chips and "cookies" from trimmings must be removed or scattered away from landing and loading areas and may not be windrowed on the edge.

5.2.38 - No Decking Against Live Trees (2/04)

Cut products may not be decked against unmarked or designated leave trees.

5.2.40 - Pathway Protection (10/10)

The Anderson Lake Trail is a ski trail and is shown on the Timber Sale Map. The Flacks Lake Scenic hiking trail is on the Timber Sale Map. Do not cut trees or damage posts with pathway markers. Maintain a 20-foot-wide slash, debris, and rut free zone daily, using the pathway as the centerline. Skidding across the trail may only occur in locations approved by the Sale Administrator.

5.4 - Soil Protection

5.4.1 - Rutting Restriction, General (7/16)

Operations are to cease immediately if equipment and weather conditions result in rutting of roads and/or skid trails which is 12 inches or greater in depth and 50 feet in length. The Unit Manager or his/her representative may restrict hauling and/or skidding if ruts exceed the specified depth. With the Unit Manager or his/her representative's approval, the Purchaser may return to the area when the risk of rutting has decreased.

6 - Safety and Fire Prevention

6.2 - Signing

6.2.1 - Road Posting (10/20)

The Purchaser is responsible for posting and maintaining caution signs on Perrin Brothers Road and the Anderson Lake Campground Road prior to beginning operations. The road must be posted at appropriate distances from the Sale Area to warn of logging activity and truck traffic. Signs must be removed when harvest operations are suspended or completed. The Purchaser will provide these signs.

6.2.2 - Snowmobile Trail Posting (10/20)

The Purchaser is responsible for posting and maintaining caution signs on Perrin Brothers Road (Trail 33) prior to beginning operations during the snowmobile season (approximately December 1 to March 31). The trail must be posted at appropriate distances from the Sale Area to warn of logging activity and truck traffic. Signs must be removed when harvest operations are suspended or completed. The Purchaser will provide these signs.



TIMBER SALE MAP

This information provided by authority of Part 525, 1994 PA 451, as amended.

Sale Number

32-019-25

Date

08/08/2025

Forest Management Unit

Gwinn Mgt Unit

County

Marquette

Mapped By: Gould

Cruised By: Gould, Siler

Scale

1:20,000

Page

1

Of

1

Township
44N

Range
25W /

Section(s) and

Subdivision(s) Sec. 12 SENW,NE,NESW,N1/2SE,SWSE; Sec. 7 W1/2NW;

Cover Type

A = Aspen	J = Jack Pine	O = Oak	U = Upland Brush
B = Paper Birch	K = Rock	P = Lowland Poplar	UM = Upland Mix Forest
C = Cedar	L = Lowland Brush	Q = Mixed Swamp Conifer	V = Bog or Marsh
D = Treed Bog	LM = Lowland Mix Forest	R = Red Pine	W = White Pine
E = Swamp Hardwoods	M = Maple, Beech, Birch	S = Black Spruce	X = Non Stocked
F = Spruce/Fir	MC = Mixed Conifer	T = Tamarack	Y = Sand
G = Grass	MD = Mixed Deciduous	Z = Water	
H = Hemlock	N = Marsh		

Density

0 = Non Stocked	5 = Pole Timber Medium
1 = Seedling Sapling Poor	6 = Pole Timber Well
2 = Seedling Sapling Medium	7 = Saw Timber Poor
3 = Seedling Sapling Well	8 = Saw Timber Medium
4 = Pole Timber Poor	9 = Saw Timber Well

Locator Map 1:100,000



**Anderson Lake
Compartment 32049
124.7 Acres**

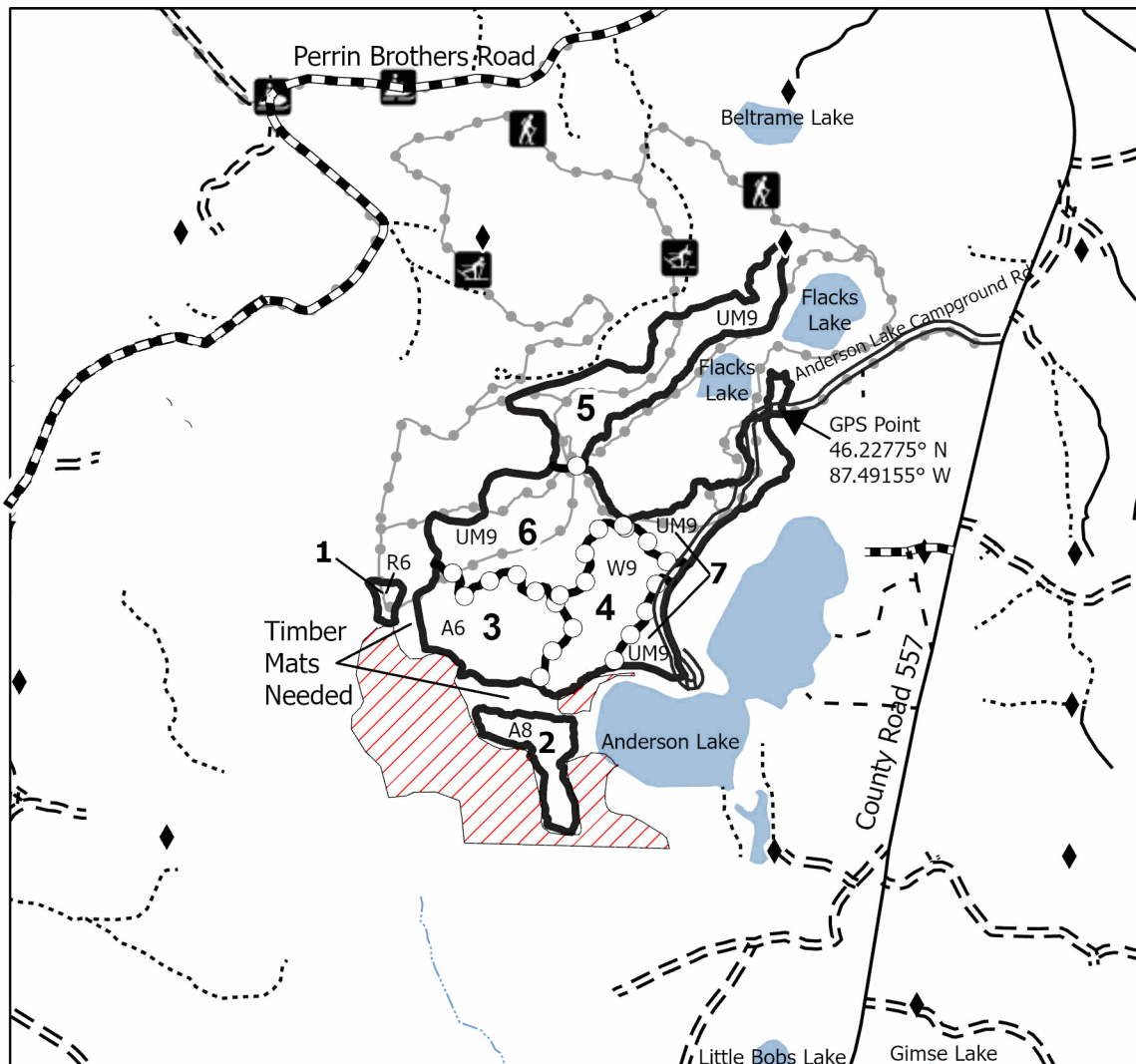
Payment Unit Number	Acres	Payment Unit Number	Acres
1	1.6	5	25.3
2	8.9	6	28
3	21.4	7	19.6
4	19.9		

0 0.25 0.5 1 Miles



Legend

- Against State (Red)
- Payment Unit (Yellow)
- Recreational Trails
- Primary Forest Road
- Forest Access Route
- Administrative Access Only
- Paved Road
- Government Gravel/Dirt
- Private Gravel/Dirt
- Survey Grade Corner
- No Equipment or Cutting



Perrin Bear (32-013-25)

T44N, R26W, SEC. 11; T44N, R26W, SEC. 12; T44N, R26W, SEC. 14; Marquette

In response to the notice of sale to be held 2:00 p.m. (local time) on January 12, 2026, I am hereby submitting my sealed bid (firm offer) for the following forest products to be cut. Bids for individual species must be at or above the advertised price. All non-responsive bid forms may be rejected.

<u>PRODUCTS & SPECIES</u>	<u>ESTIMATED VOLUME*</u>	<u>ADVERTISED PRICE</u>	<u>BID PRICE/UNIT</u>
Sawtimber			
Paper Birch	6.8 MBF	\$ 83.00/MBF	\$ _____
Red Maple	128.6 MBF	\$ 84.00/MBF	\$ _____
Sugar Maple	92.3 MBF	\$ 200.00/MBF	\$ _____
Pulpwood			
Balsam Fir	124 Cords	\$ 10.35/Cord	\$ _____
Mixed Hardwood	1,855 Cords	\$ 11.60/Cord	\$ _____
Mixed Spruce	85 Cords	\$ 10.70/Cord	\$ _____
Quaking Aspen	40 Cords	\$ 22.80/Cord	\$ _____
Tamarack	6 Cords	\$ 13.05/Cord	\$ _____

*The volumes are statistically estimated within plus (+) or minus (-) 12.93 percent at 95% confidence level. These estimated volumes are final and not subject to adjustment. Prospective bidders are urged to examine this timber and to make their own estimates of quantity and quality.

I understand that any or all bids may be rejected. All bids must be signed and all bid items must be bid or the bid form may be rejected. I also understand that consideration and awarding a contract will be based upon my past performance and ability to complete the contract based upon equipment and staffing subject to my control.

FEDERAL ID: ____ - ____ - ____ or SOCIAL SECURITY NUMBER: ____ - ____ - ____

Company or individual bidding: _____

Company representative's name: _____

Address: _____

City: _____ State: _____ Zip: _____

IF AVAILABLE, PLEASE PLACE THE PERSONALIZED LABEL FROM YOUR PROSPECTUS IN THE ABOVE BOX.

Individual or company representative's signature: _____ Date: _____

Phone number : _____ Email (optional): _____

THE WINNING BIDDER MUST COMPLETE THE VERIFICATION OF WORKER'S DISABILITY COMPENSATION ACT COMPLIANCE (ON REVERSE SIDE IF DOUBLE SIDED) WITHIN 21 DAYS OF SALE AWARD DATE



TIMBER SALE VERIFICATION OF WORKER'S DISABILITY COMPENSATION ACT COMPLIANCE

As required by Act 317, P.A. 1969 (Worker's Compensation) and
Part 5 of Act 451 of 1994, as amended.

FOR DEPARTMENT USE ONLY

Sale Number (XX - XXX - XX - XX)

Forest Management Unit:

VERIFICATION OF WORKER'S DISABILITY COMPENSATION ACT COMPLIANCE

- This verification must be completed and submitted within 21 days of contract award and prior to the issuance of the timber sale contract.
- In addition, if boxes 2B or 2C are checked, then Notice of Exclusion or Certificate of Insurance must be submitted within twenty-one (21) days of the contract award and prior to the issuance of the timber sale contract.
- All information must be typed or printed except for written signatures.

Please Check Appropriate Categories:

1. My business is organized as (you **must** check one of the boxes below):
 - A. ☐ Sole Proprietorship (individual)
 - B. ☐ Partnership
 - C. ☐ Corporation
2. You **must** check one of the boxes below:
 - A. ☐ I certify my business is a sole proprietorship and it has no employees but the sole proprietor. I am not subject to the Worker's Compensation Laws.
 - B. ☐ I certify my business has satisfied its obligation to the Worker's Compensation Act through the use of an approved Notice of Exclusion (BWC-337, Rev. 5/96). I will provide a copy of the Notice of Exclusion within 21 days of the contract award. (For questions or a copy of the BWC-337, please call the Worker's Compensation Bureau at 517-322-1195).
 - C. ☐ I certify my business has a Worker's Compensation Policy. I will provide an original Certificate of Insurance within twenty-one (21) days of the contract award.
3. If you have checked item 2(A) or 2(B), you **must** indicate the number of **both** full-time and part-time employees, other than yourself, including family members and active partners (if none, you must enter "0").

_____ Full-time Employees

_____ Part-time Employees

Name of Business		Federal ID (or) Social Security No.
Address		Telephone ()
City	State	ZIP

I hereby certify that the above information is true and correct. I agree to notify the Michigan DNR of any changes that occur in factors affecting my coverage during any of my present and future operations.

Signature of Owner or Authorized Representative

Title

Date

Please complete the "SEALED BID" information on the next page

Anderson Lake (32-019-25)

T44N, R25W, SEC. 7; T44N, R26W, SEC. 12; Marquette COUNTY

In response to the notice of sale to be held 2:00 p.m. (local time) on January 12, 2026, I am hereby submitting my sealed bid (firm offer) for the following forest products to be cut. Bids for individual species must be at or above the advertised price. All non-responsive bid forms may be rejected.

<u>PRODUCTS & SPECIES</u>	<u>ESTIMATED VOLUME*</u>	<u>ADVERTISED PRICE</u>	<u>BID PRICE/UNIT</u>
Sawtimber			
Paper Birch	9.2 MBF	\$ 83.00/MBF	\$ _____
Red Maple	6.6 MBF	\$ 84.00/MBF	\$ _____
Pulpwood			
Balsam Fir	8 Cords	\$ 10.35/Cord	\$ _____
Mixed Aspen	499 Cords	\$ 22.80/Cord	\$ _____
Paper Birch	301 Cords	\$ 12.20/Cord	\$ _____
Red Maple	860 Cords	\$ 11.60/Cord	\$ _____
Red Pine	6 Cords	\$ 47.20/Cord	\$ _____
White Pine	71 Cords	\$ 13.15/Cord	\$ _____
White Spruce	31 Cords	\$ 10.70/Cord	\$ _____
Yellow Birch	13 Cords	\$ 11.60/Cord	\$ _____

*The volumes are statistically estimated within plus (+) or minus (-) 12.94 percent at 95% confidence level. These estimated volumes are final and not subject to adjustment. Prospective bidders are urged to examine this timber and to make their own estimates of quantity and quality.

I understand that any or all bids may be rejected. All bids must be signed and all bid items must be bid or the bid form may be rejected. I also understand that consideration and awarding a contract will be based upon my past performance and ability to complete the contract based upon equipment and staffing subject to my control.

FEDERAL ID: ____ - ____ - ____ or SOCIAL SECURITY NUMBER: ____ - ____ - ____

Company or individual bidding: _____

Company representative's name: _____

Address: _____

City: _____ State: _____ Zip: _____

IF AVAILABLE, PLEASE PLACE THE PERSONALIZED LABEL FROM YOUR PROSPECTUS IN THE ABOVE BOX.

Individual or company representative's signature: _____ Date: _____

Phone number : _____ Email (optional): _____

**THE WINNING BIDDER MUST COMPLETE THE VERIFICATION OF WORKER'S DISABILITY COMPENSATION ACT
COMPLIANCE (ON REVERSE SIDE IF DOUBLE SIDED) WITHIN 21 DAYS OF SALE AWARD DATE**



TIMBER SALE VERIFICATION OF WORKER'S DISABILITY COMPENSATION ACT COMPLIANCE

As required by Act 317, P.A. 1969 (Worker's Compensation) and
Part 5 of Act 451 of 1994, as amended.

FOR DEPARTMENT USE ONLY

Sale Number (XX - XXX - XX - XX)

Forest Management Unit:

VERIFICATION OF WORKER'S DISABILITY COMPENSATION ACT COMPLIANCE

- This verification must be completed and submitted within 21 days of contract award and prior to the issuance of the timber sale contract.
- In addition, if boxes 2B or 2C are checked, then Notice of Exclusion or Certificate of Insurance must be submitted within twenty-one (21) days of the contract award and prior to the issuance of the timber sale contract.
- All Information must be typed or printed except for written signatures.

Please Check Appropriate Categories:

1. My business is organized as (you **must** check one of the boxes below):
 - A. ☐ Sole Proprietorship (individual)
 - B. ☐ Partnership
 - C. ☐ Corporation
2. You **must** check one of the boxes below:
 - A. ☐ I certify my business is a sole proprietorship and it has no employees but the sole proprietor. I am not subject to the Worker's Compensation Laws.
 - B. ☐ I certify my business has satisfied its obligation to the Worker's Compensation Act through the use of an approved Notice of Exclusion (BWC-337, Rev. 5/96). I will provide a copy of the Notice of Exclusion within 21 days of the contract award. (For questions or a copy of the BWC-337, please call the Worker's Compensation Bureau at 517-322-1195).
 - C. ☐ I certify my business has a Worker's Compensation Policy. I will provide an original Certificate of Insurance within twenty-one (21) days of the contract award.
3. If you have checked item 2(A) or 2(B), you **must** indicate the number of **both** full-time and part-time employees, other than yourself, including family members and active partners (if none, you must enter "0").

_____ Full-time Employees

_____ Part-time Employees

Name of Business		Federal ID (or) Social Security No.
Address		Telephone ()
City	State	ZIP

I hereby certify that the above information is true and correct. I agree to notify the Michigan DNR of any changes that occur in factors affecting my coverage during any of my present and future operations.

Signature of Owner or Authorized Representative

Title

Date

Please complete the "SEALED BID" information on the next page

Peshekee Supreme (32-004-25)
T48N, R30W, SEC. 12; T48N, R30W, SEC. 13; Marquette COUNTY

In response to the notice of sale to be held 2:00 p.m. (local time) on January 12, 2026, I am hereby submitting my sealed bid (firm offer) for the following forest products to be cut. Bids for individual species must be at or above the advertised price. All non-responsive bid forms may be rejected.

<u>PRODUCTS & SPECIES</u>	<u>ESTIMATED VOLUME*</u>	<u>ADVERTISED PRICE</u>	<u>BID PRICE/UNIT</u>
Sawtimber			
Paper Birch	2.5 MBF	\$ 66.00/MBF	\$ _____
Sugar Maple	0.8 MBF	\$ 160.00/MBF	\$ _____
Pulpwood			
Balsam Fir	39 Cords	\$ 8.25/Cord	\$ _____
Mixed Hardwood	281 Cords	\$ 9.25/Cord	\$ _____
Mixed Spruce	40 Cords	\$ 8.55/Cord	\$ _____
Paper Birch	85 Cords	\$ 9.75/Cord	\$ _____
Quaking Aspen	66 Cords	\$ 18.25/Cord	\$ _____

*The volumes are statistically estimated within plus (+) or minus (-) 20.77 percent at 95% confidence level. These estimated volumes are final and not subject to adjustment. Prospective bidders are urged to examine this timber and to make their own estimates of quantity and quality.

I understand that any or all bids may be rejected. All bids must be signed and all bid items must be bid or the bid form may be rejected. I also understand that consideration and awarding a contract will be based upon my past performance and ability to complete the contract based upon equipment and staffing subject to my control.

FEDERAL ID: ____ - ____ - ____ or SOCIAL SECURITY NUMBER: ____ - ____ - ____
Company or individual bidding: _____
Company representative's name: _____
Address: _____
City: _____ State: _____ Zip: _____

IF AVAILABLE, PLEASE PLACE THE PERSONALIZED LABEL FROM YOUR PROSPECTUS IN THE ABOVE BOX.

Individual or company representative's signature: _____ Date: _____
Phone number : _____ Email (optional): _____

**THE WINNING BIDDER MUST COMPLETE THE VERIFICATION OF WORKER'S DISABILITY COMPENSATION ACT
COMPLIANCE (ON REVERSE SIDE IF DOUBLE SIDED) WITHIN 21 DAYS OF SALE AWARD DATE**



TIMBER SALE VERIFICATION OF WORKER'S DISABILITY COMPENSATION ACT COMPLIANCE

As required by Act 317, P.A. 1969 (Worker's Compensation) and
Part 5 of Act 451 of 1994, as amended.

FOR DEPARTMENT USE ONLY

Sale Number (XX - XXX - XX - XX)

Forest Management Unit:

VERIFICATION OF WORKER'S DISABILITY COMPENSATION ACT COMPLIANCE

- This verification must be completed and submitted within 21 days of contract award and prior to the issuance of the timber sale contract.
- In addition, if boxes 2B or 2C are checked, then Notice of Exclusion or Certificate of Insurance must be submitted within twenty-one (21) days of the contract award and prior to the issuance of the timber sale contract.
- All information must be typed or printed except for written signatures.

Please Check Appropriate Categories:

1. My business is organized as (you **must** check one of the boxes below):
 - A. ☐ Sole Proprietorship (individual)
 - B. ☐ Partnership
 - C. ☐ Corporation
2. You **must** check one of the boxes below:
 - A. ☐ I certify my business is a sole proprietorship and it has no employees but the sole proprietor. I am not subject to the Worker's Compensation Laws.
 - B. ☐ I certify my business has satisfied its obligation to the Worker's Compensation Act through the use of an approved Notice of Exclusion (BWC-337, Rev. 5/96). I will provide a copy of the Notice of Exclusion within 21 days of the contract award. (For questions or a copy of the BWC-337, please call the Worker's Compensation Bureau at 517-322-1195).
 - C. ☐ I certify my business has a Worker's Compensation Policy. I will provide an original Certificate of Insurance within twenty-one (21) days of the contract award.
3. If you have checked item 2(A) or 2(B), you **must** indicate the number of **both** full-time and part-time employees, other than yourself, including family members and active partners (if none, you must enter "0").

_____ Full-time Employees

_____ Part-time Employees

Name of Business		Federal ID (or) Social Security No.
Address		Telephone ()
City	State	ZIP

I hereby certify that the above information is true and correct. I agree to notify the Michigan DNR of any changes that occur in factors affecting my coverage during any of my present and future operations.

Signature of Owner or Authorized Representative

Title

Date

Please complete the "SEALED BID" information on the next page