

Michigan Department of Natural Resources

Stream Crossing Inventory Survey123

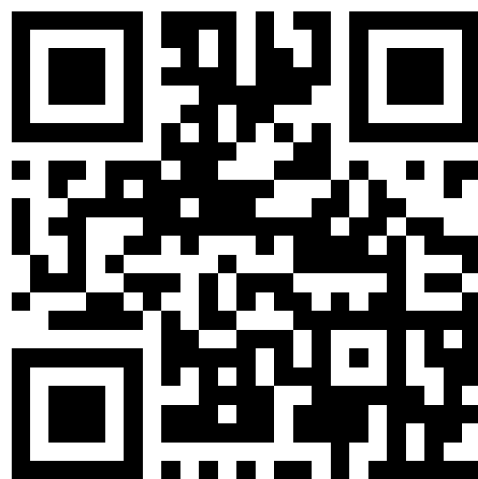
DNR GIS

Resource Assessment Section



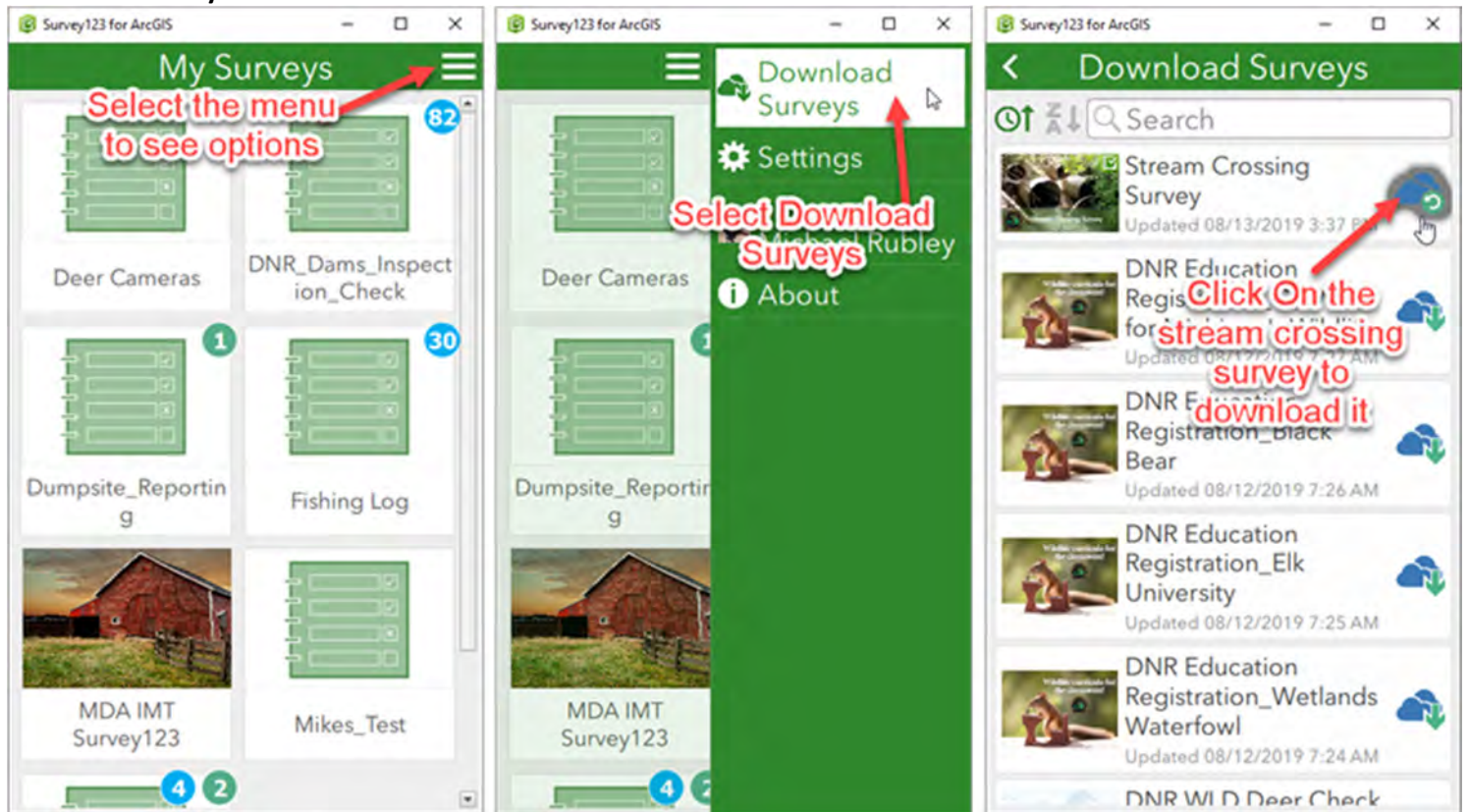
Stream Crossing Survey

Scan or click QR code to download and open survey

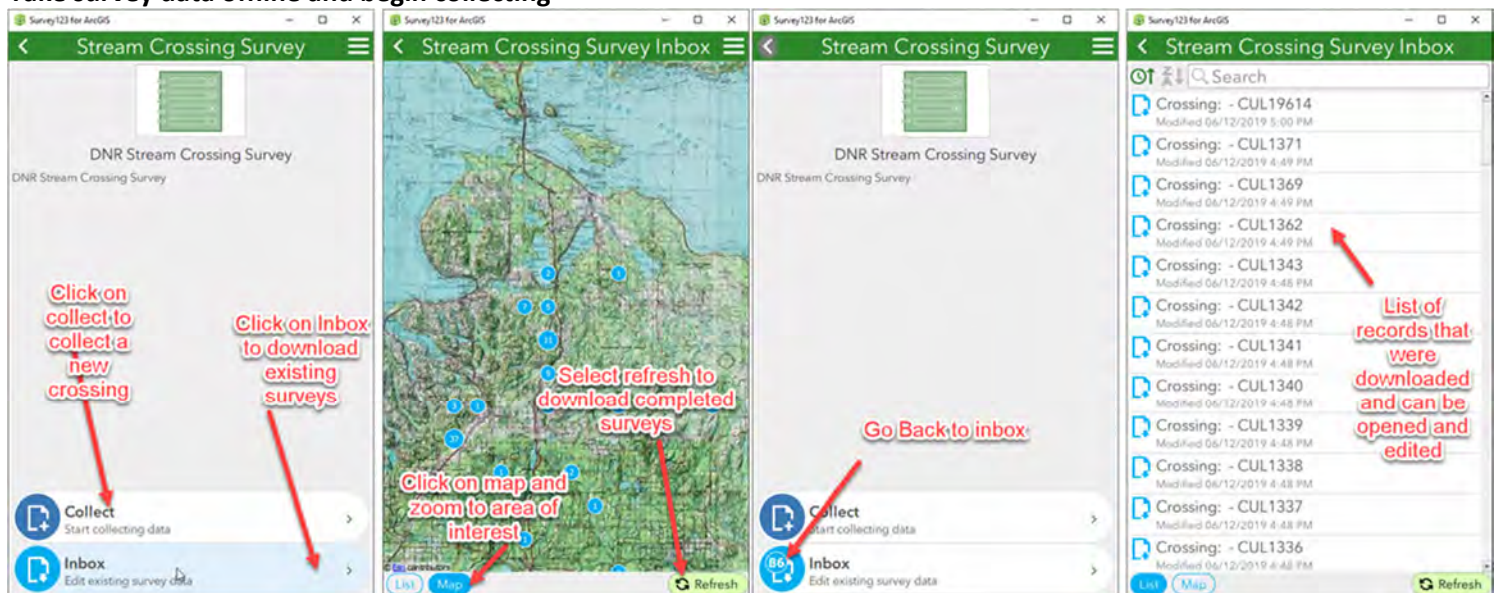


Once installed, you can use your ArcGIS logins to sign in and download the Stream Crossing Survey. As we do updates, this is the same process to update the survey on your device to get the latest and greatest changes to come through.

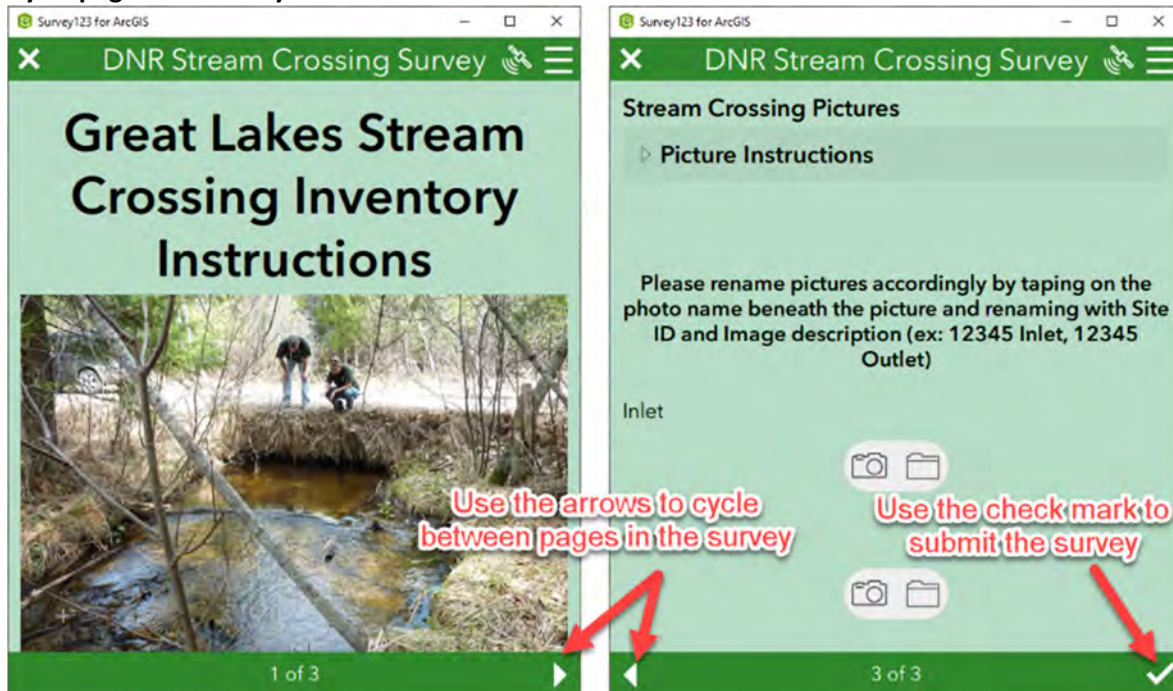
Download Survey



Take survey data offline and begin collecting

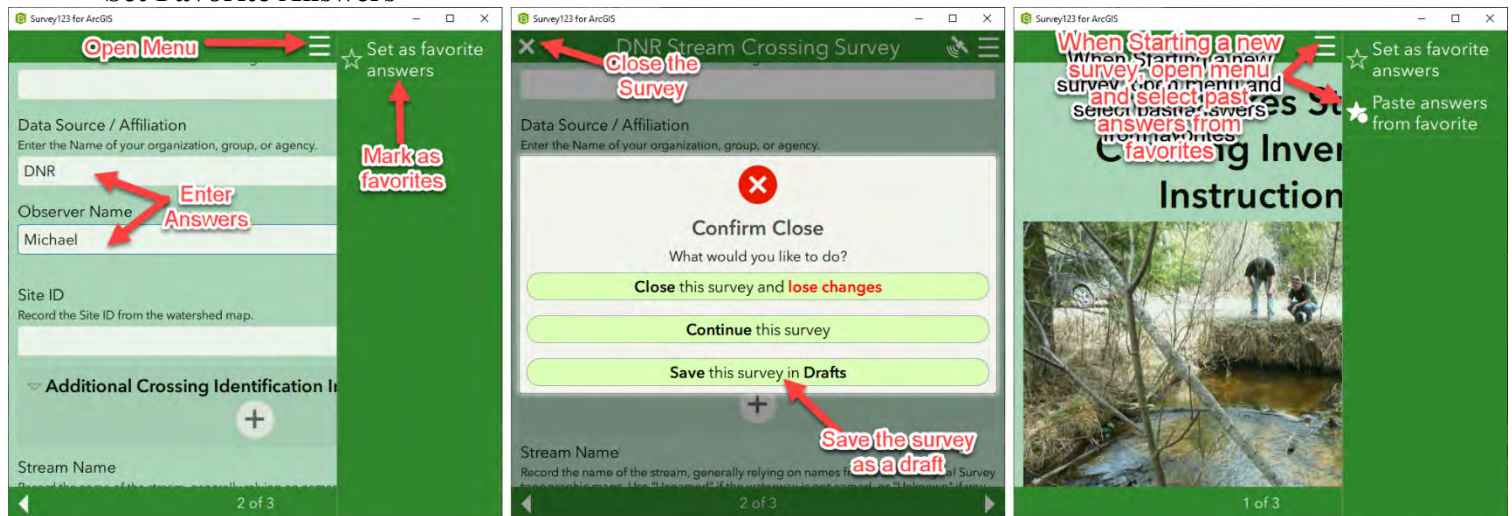


Cycle pages in a survey and submit information



Other Tips and Tricks

Set Favorite Answers



View Instructions and Add additional information

Survey123 for ArcGIS

DNR Stream Crossing Survey

02W

Section
16

▶ Crossing Type Instructions

Crossing Type

Culvert

Ford

Dam

Bridge

Other

Crossing Use

What is the primary use of the crossing?

Road

Railroad

2 of 3

Survey123 for ArcGIS

DNR Stream Crossing Survey

Calculated for Approach Lengths of 1,000 ft or less

Right Approach Erosion Estimate (tons/yr)

Crossing surface, Crossing Width, Approach Length, Approach Slope, and Approach Ditch Vegetation must be filled in to calculate erosion

Use the + to add a new record for each distinct gully/erosion location. Note prominent streambank erosion within 50 feet of crossing.

Click on + to add additional information related to site

Site Erosion Estimate Total tons/yr

▶ Aquatic Passability (Automatically Calculated)

Aquatic Passability

Not Assessed

2 of 3