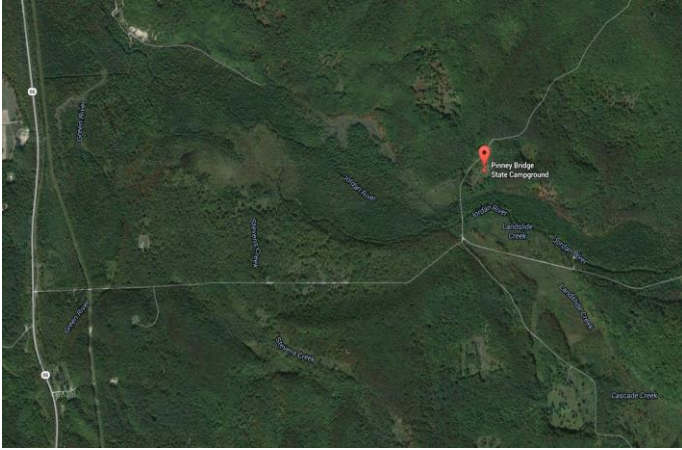


Jordan River Pinney Bridge



Fish Species

Brook Trout; Brown Trout; Rainbow Trout; Steelhead

Species Description

Brown trout (1-14 inches), rainbow trout (1-7 inches and adults), brook trout (1-8 inches) steelhead (up to 25 inches), Chinook salmon (adults), coho salmon (adults).

Geographic Coordinates

Lat:45.022592 / Long:-85.0568

Noteworthy

DNR Pinney Bridge Hike-In Campground is on the north side of the Jordan River. The gate is part of the snowmobile trail in the winter-time.
<http://www.michigandnr.com/parksandtrails/details.aspx?id=610&type=SFCG>

Fishing Regulations

The Jordan River is a designated Type 1 trout stream from its headwaters down to Graves Crossing. From Graves Crossing downstream to the mouth, the Jordan River is a designated Type 4 trout stream. Please refer to the Inland Trout and Salmon Stream Regulations in the current Michigan Fishing Guide. The fishery here is predominately resident fish, although it is stocked each spring with migratory steelhead.

Directions to Site

Less than one mile south of Graves Crossing, Piney Bridge Road is also on the west side of Hwy M-66. Take Pinney Bridge Road a little more than 1/2 mile into the campground area. Small area for dirt parking.

Regional Visitor Information (URL)

gaylordmichigan.net