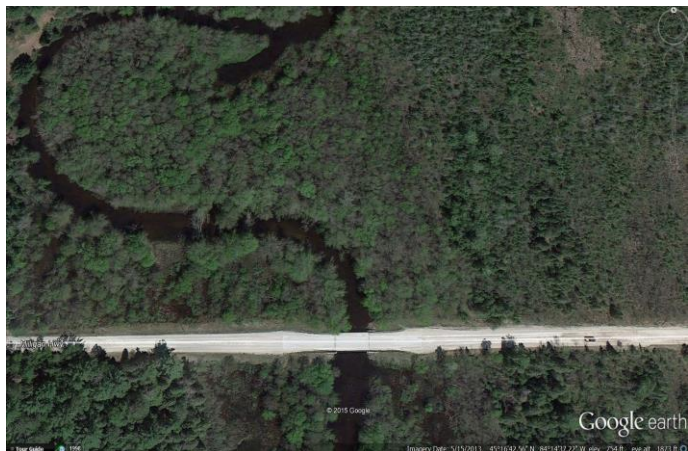


Main Branch Black River Milligan Bridge



Fish Species

Brook Trout

Species Description

Brook trout are the primary trout species encountered at this location.

Geographic Coordinates

Lat:45.277933 / Long:-84.243617

Noteworthy

This reach of river is capable of holding some large brook trout, although densities are thin due to increasing water temperatures downstream. This water is best floated, especially in spring or fall. Bottom is sand, silt, and cobble. Don't be surprised to catch an occasional small northern pike, rock bass, or smallmouth bass. Keep in mind there is no size limit on pike in this reach. Be respectful of private landowner rights.

Fishing Regulations

This site on the Main Branch of the Black River is a designated Type 1 trout stream. Please refer to the Inland Trout and Salmon Stream Regulations in the current Michigan Fishing Guide.

Directions to Site

From Onaway heading 5.2 miles south, turn west on Milligan Hwy and continue 0.8 miles to the Milligan Bridge.

Regional Visitor Information (URL)

gaylordmichigan.net