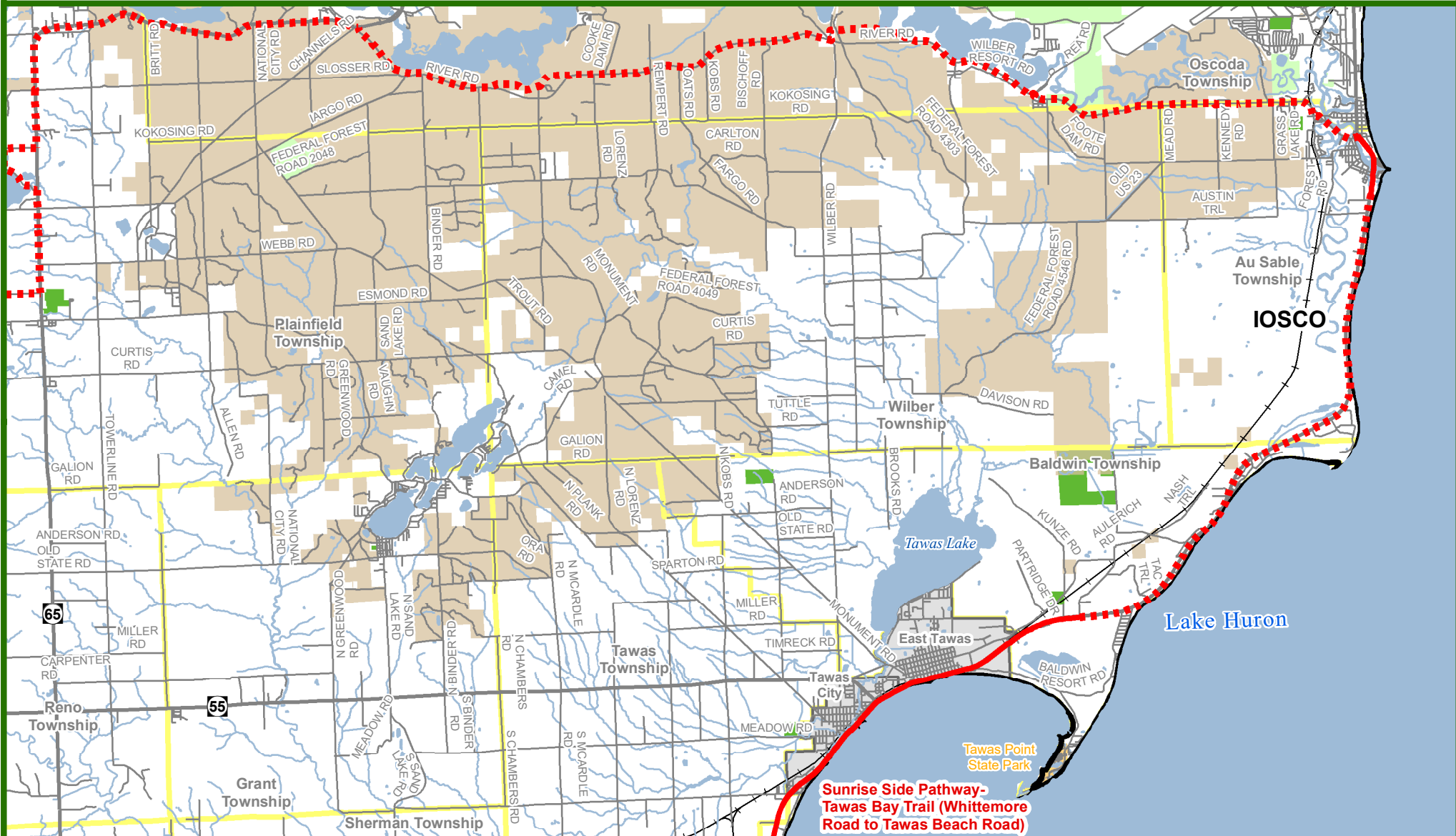




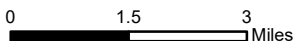
Michigan's Iron Belle Trail - Two Routes, One Great Trail

Sunrise Side Pathway on US-23 - Oscoda Community Trail - Iosco County River Pathway



Sunrise Side Pathway - Tawas Bay Trail (Whittemore Road to Tawas Beach Road)

** The illustrated hike and bicycle trail connections will rely upon partnership opportunities. **



February 2018
Michigan Department of Natural Resources
Forest Resources Division
Resource Assessment Section

- | | | |
|-------------------------------|-----------------------|-------------------|
| Biking Trail | — Gravel Road | ■ Federal Land |
| — Biking - Existing Trail | + Railroad | ■ Public Land |
| - - - Biking - Proposed Trail | — River | ■ City or Village |
| Road Type | — Lake | ■ Township |
| — Highway | — State Park Boundary | ■ County |
| — Paved Road | ■ State Land | |

