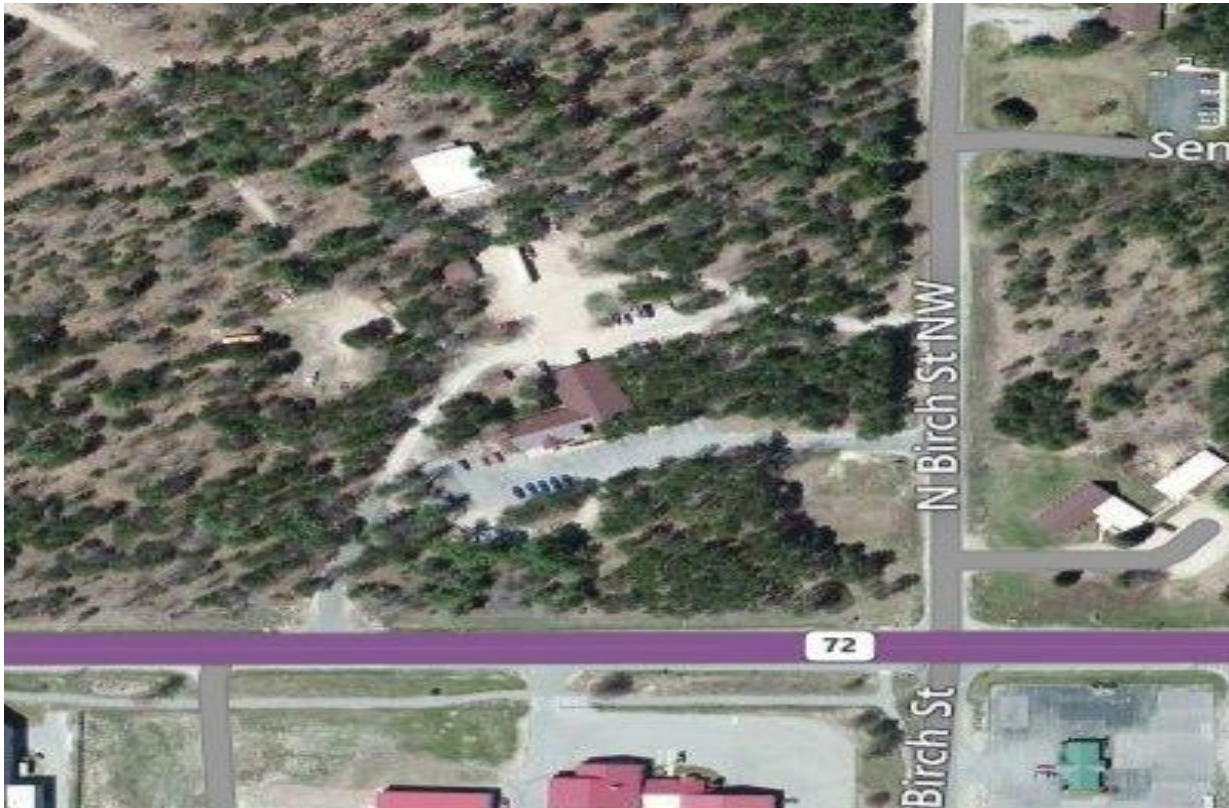


DC201440001 - - Kalkaska Field Office - 2015



STATION LOCATION

Address: 2089 Birch Street

City: Kalkaska

Phone: 231-258-2711

County: Kalkaska

Wildlife Management Area:

Northern Lower Peninsula

Latitude: 44.743702

Longitude: 44.743702

HOURS OF OPERATION

Closed on state Holidays; Nov. 15 - Sun. - 10:00am - 3:00pm; Nov. 16 to Dec. 5 - Mon. through Fri. - 8:00am - 4:30pm; Nov. 21 to Nov. 22 - Sat. and Sun.- 10:00am - 3:00pm