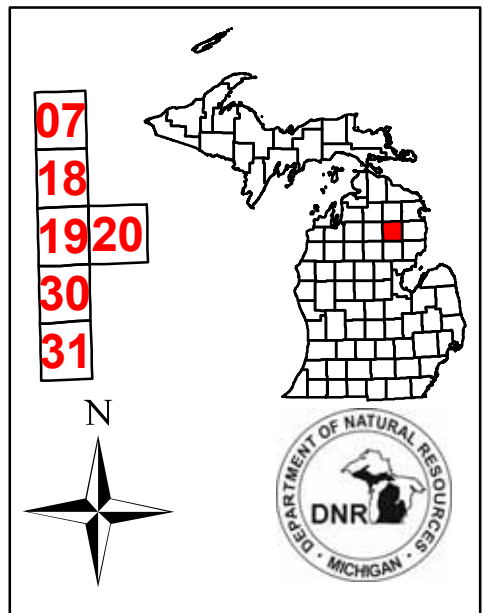
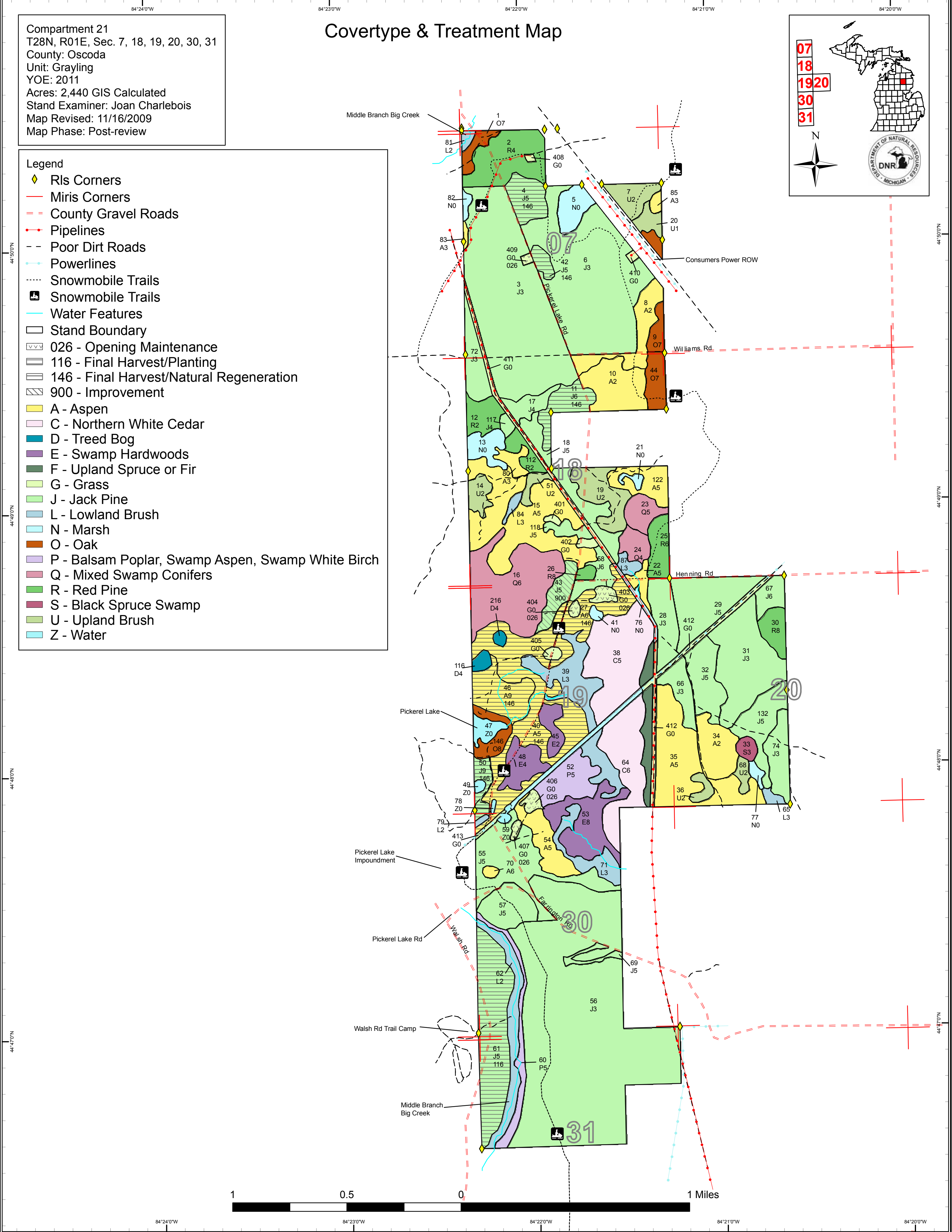
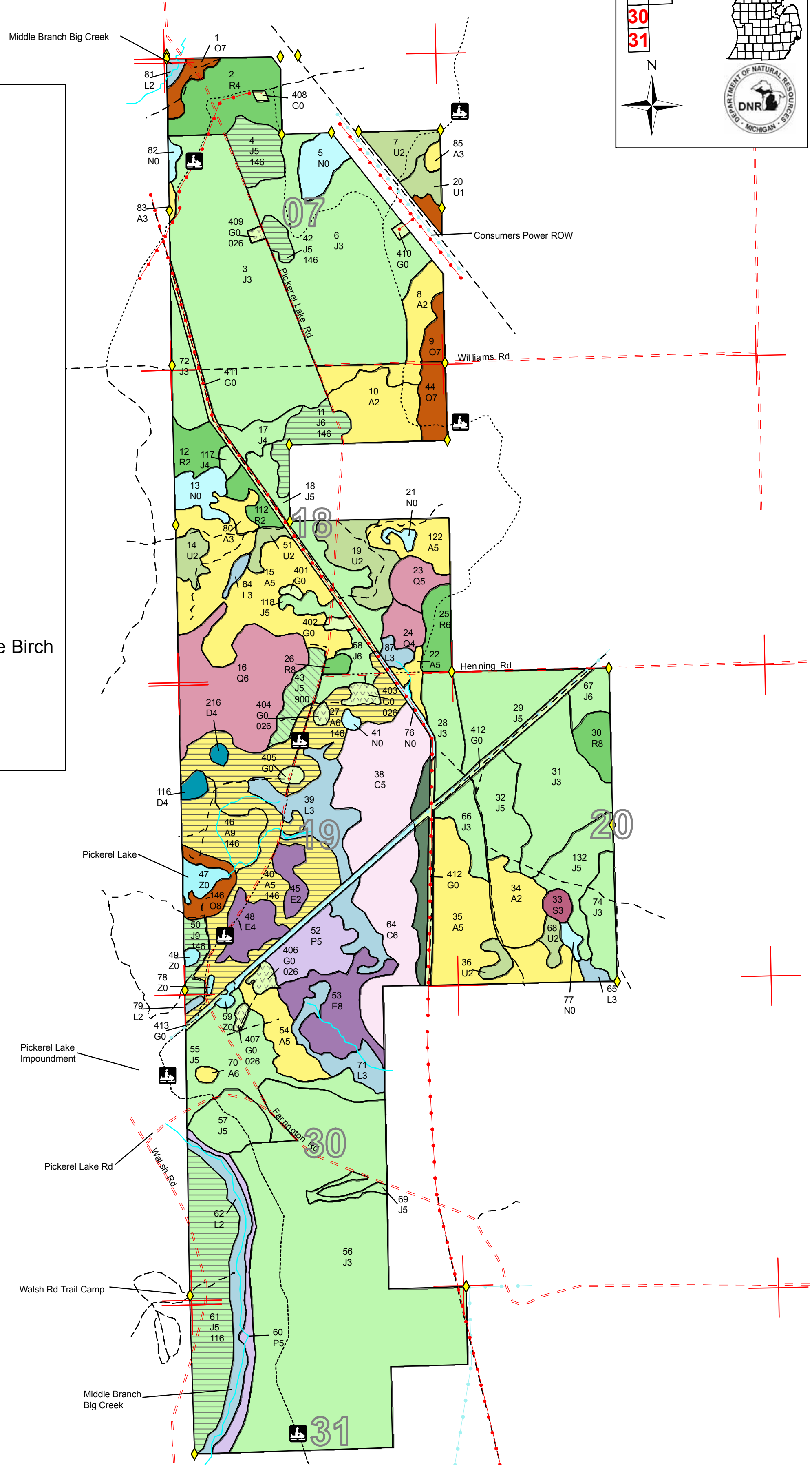


Covertypes & Treatment Map

Compartment 21
 T28N, R01E, Sec. 7, 18, 19, 20, 30, 31
 County: Oscoda
 Unit: Grayling
 YOE: 2011
 Acres: 2,440 GIS Calculated
 Stand Examiner: Joan Charlebois
 Map Revised: 11/16/2009
 Map Phase: Post-review



- Legend**
- ◆ RIs Corners
 - Miris Corners
 - - County Gravel Roads
 - Pipelines
 - - Poor Dirt Roads
 - Powerlines
 - ⋯ Snowmobile Trails
 - ☒ Snowmobile Trails
 - Water Features
 - ☐ Stand Boundary
 - ▨ 026 - Opening Maintenance
 - ▨ 116 - Final Harvest/Planting
 - ▨ 146 - Final Harvest/Natural Regeneration
 - ▨ 900 - Improvement
 - A - Aspen
 - C - Northern White Cedar
 - D - Treed Bog
 - E - Swamp Hardwoods
 - F - Upland Spruce or Fir
 - G - Grass
 - J - Jack Pine
 - L - Lowland Brush
 - N - Marsh
 - O - Oak
 - P - Balsam Poplar, Swamp Aspen, Swamp White Birch
 - Q - Mixed Swamp Conifers
 - R - Red Pine
 - S - Black Spruce Swamp
 - U - Upland Brush
 - Z - Water

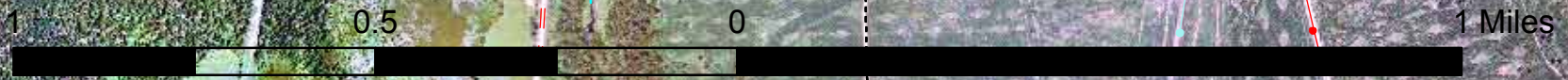
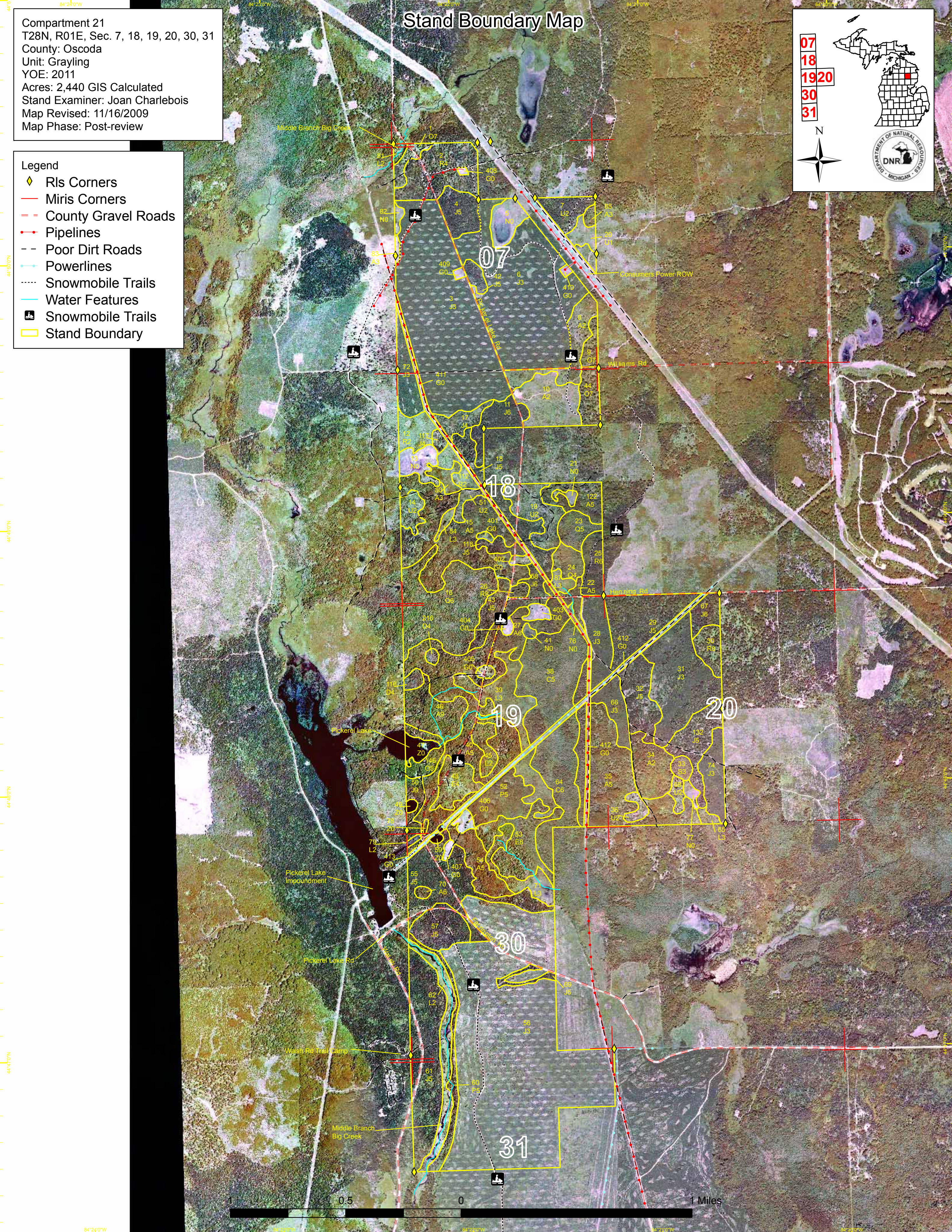
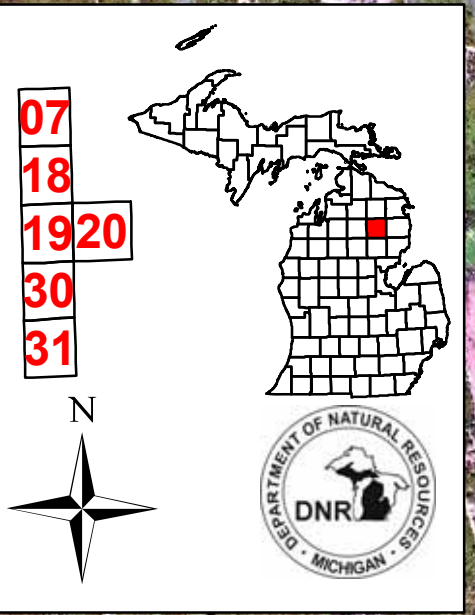


Stand Boundary Map

Compartment 21
T28N, R01E, Sec. 7, 18, 19, 20, 30, 31
County: Oscoda
Unit: Grayling
YOE: 2011
Acres: 2,440 GIS Calculated
Stand Examiner: Joan Charlebois
Map Revised: 11/16/2009
Map Phase: Post-review

Legend

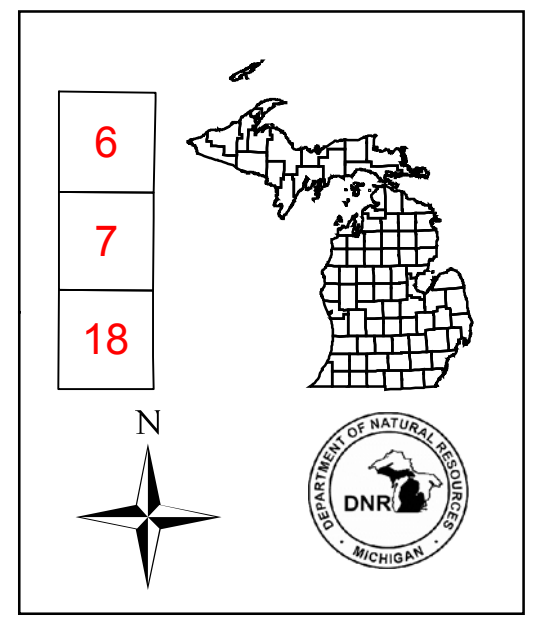
- ◆ RIs Corners
- Miris Corners
- - County Gravel Roads
- Pipelines
- - Poor Dirt Roads
- Powerlines
- Snowmobile Trails
- Water Features
- 🏠 Snowmobile Trails
- Stand Boundary



44°30'N
44°35'N
44°40'N
44°45'N
84°20'W
84°25'W
84°30'W
84°35'W

Dedicated & Proposed Special Conservation Area Map

Compartment 21
 T28N, R01E, Sec. 7, 18, 19, 20, 30, 31
 County: Oscoda
 Unit: Grayling
 YOE: 2011
 Acres: 2,440 GIS Calculated
 Stand Examiner: Joan Charlebois
 Map Revised: 11/16/2009
 Map Phase: Post-review

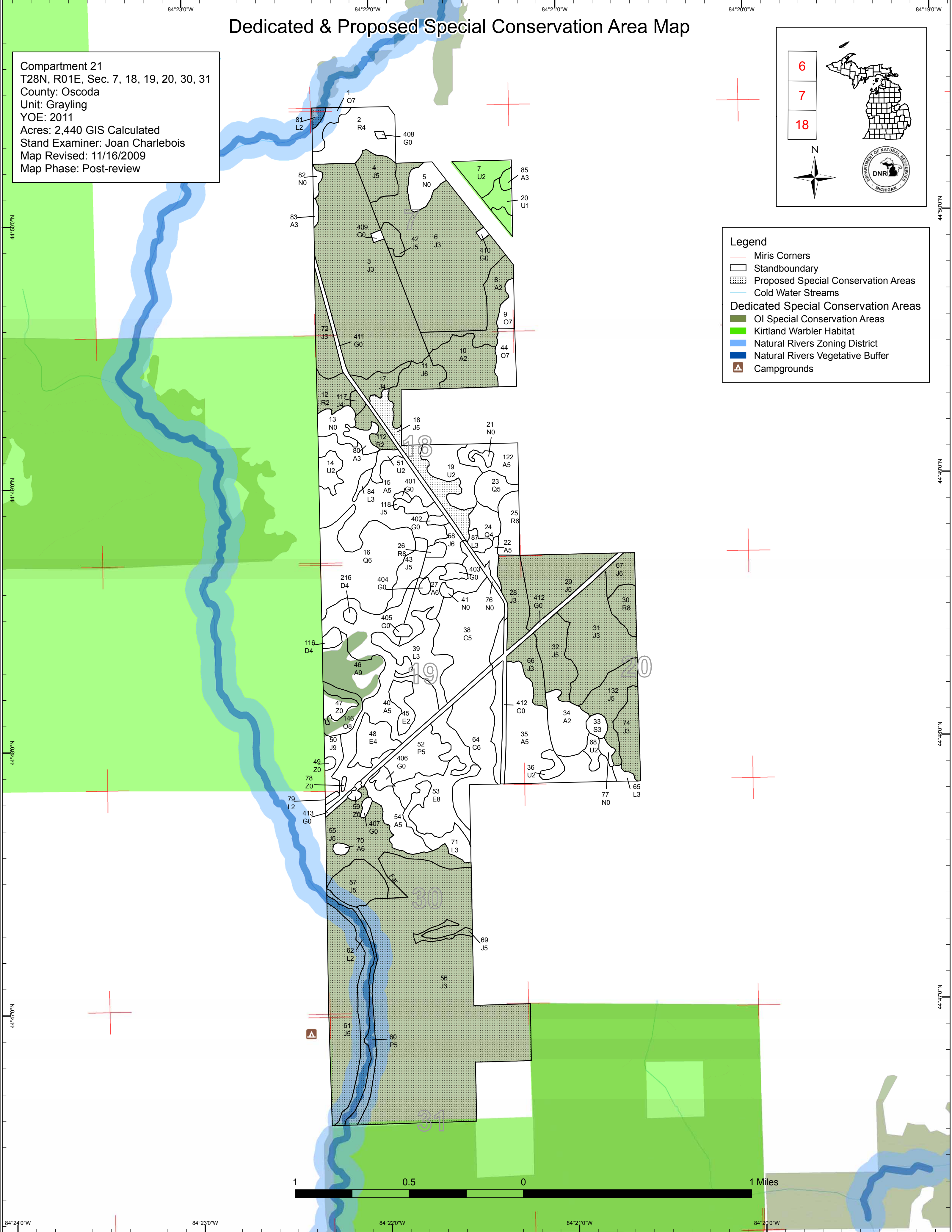


Legend

- Miris Corners
- Standboundary
- Proposed Special Conservation Areas
- Cold Water Streams

Dedicated Special Conservation Areas

- OI Special Conservation Areas
- Kirtland Warbler Habitat
- Natural Rivers Zoning District
- Natural Rivers Vegetative Buffer
- Campgrounds



84°24'0"W 84°23'0"W 84°22'0"W 84°21'0"W 84°20'0"W
 44°50'0"N 44°49'0"N 44°48'0"N 44°47'0"N



DEDICATED CONSERVATION AREA DETAILS

* This is a list of Dedicated Biodiversity Areas for this compartment along with a 1/4 mile buffer surrounding the compartment. Refer to Dedicated Conservation Area Map for areas that the below listed Conservation Areas are located.

ERA = Ecological Reference Area
HCVA = High Conservation Value Area
SCA = Special Conservation Area

Conservation Area	Type	Description
HCVA	Designated Critical Habitat	Critical habitat areas are established via a consultative and cooperative process between the DNR and the U.S. Fish and Wildlife service for the recovery of threatened and endangered species, as governed by Part 365, Endangered Species Protection, of the Natural Resources and Environmental Protection Act, 1994 PA 451, and the Federal Endangered Species Act of 1973. This is an active program, with proposed species plans in various stages of review. As of now only two exist, Kirtland Warbler Habitat and Piping Plover Habitat.
HCVA	Natural Rivers	There are two Natural Rivers datasets which are derived from spatial buffers set from an established and approved distance from the river centerlines. The Natural Rivers Zoning District is a 400 foot buffer for most Natural Rivers. The Vegetative Buffer ranges from 25 to 100 feet. To view specific Zoning Districts and Vegetative Buffers for each Natural River see the table located on the I:\Documentation\GDSE data folder.
SCA	Archaeological Site	An aquatic or terrestrial area of the State that contains physical remains of human occupation. These are sites of cultural and historical significance that may occur upon terrestrial areas and Great Lakes bottomlands. They include thousands of Native American settlements and burial sites, as well as French and British outposts, nineteenth century logging camps, mines and homesteads. Beneath the waters of the Great Lakes, there are shipwrecks and other remains documenting the maritime trade. Such sites may be identified by Natural heritage data from the State Historic Preservation Office. Proposed treatments in this compartment will be implemented in such a manner as to maintain the integrity of these sites. Due to the sensitive nature of this information, no further detail about location is available.
SCA	Cold Water Stream	A coldwater stream has temperature and dissolved oxygen conditions that allow naturally-reproduced or stocked trout populations and those of other coldwater fish species (e.g., slimy sculpin) to persist from year to year. Coldwater streams in Michigan typically provide these conditions due to substantial contributions of groundwater to their stream flows. Such streams are established by Director's action and designated as trout resources by Fisheries Order 210.
SCA	Concentrated Recreation Area	Facilities that are designed and maintained for routine or heavy recreational use, including State Parks, State Forest campgrounds, motorized and non-motorized trails, trailheads, staging areas and public access sites.
SCA	Potential Old Growth Areas	This category contains stands were identified for a broad range of reasons and were coded in the OI database as stand condition 8 as potential old growth (POG). Approximately 310,000 acres have been identified through the Operations Inventory (OI)/Compartment Review process. For stands in Year of Entry 2008 and forward, potential old growth is managed for the identified objective until it is: 1) vetted through the Biodiversity Conservation Planning Process (BCPP) and given a specific designation and objective (as an ERA, HCVA, or other type of SCA) and is released from the potential old growth designation; or 2) it is released from the potential old growth designation via the Compartment Review process.