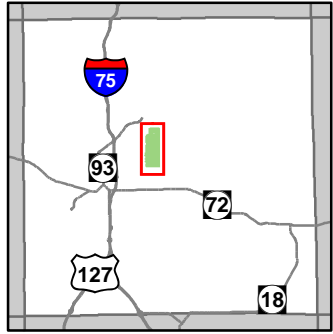


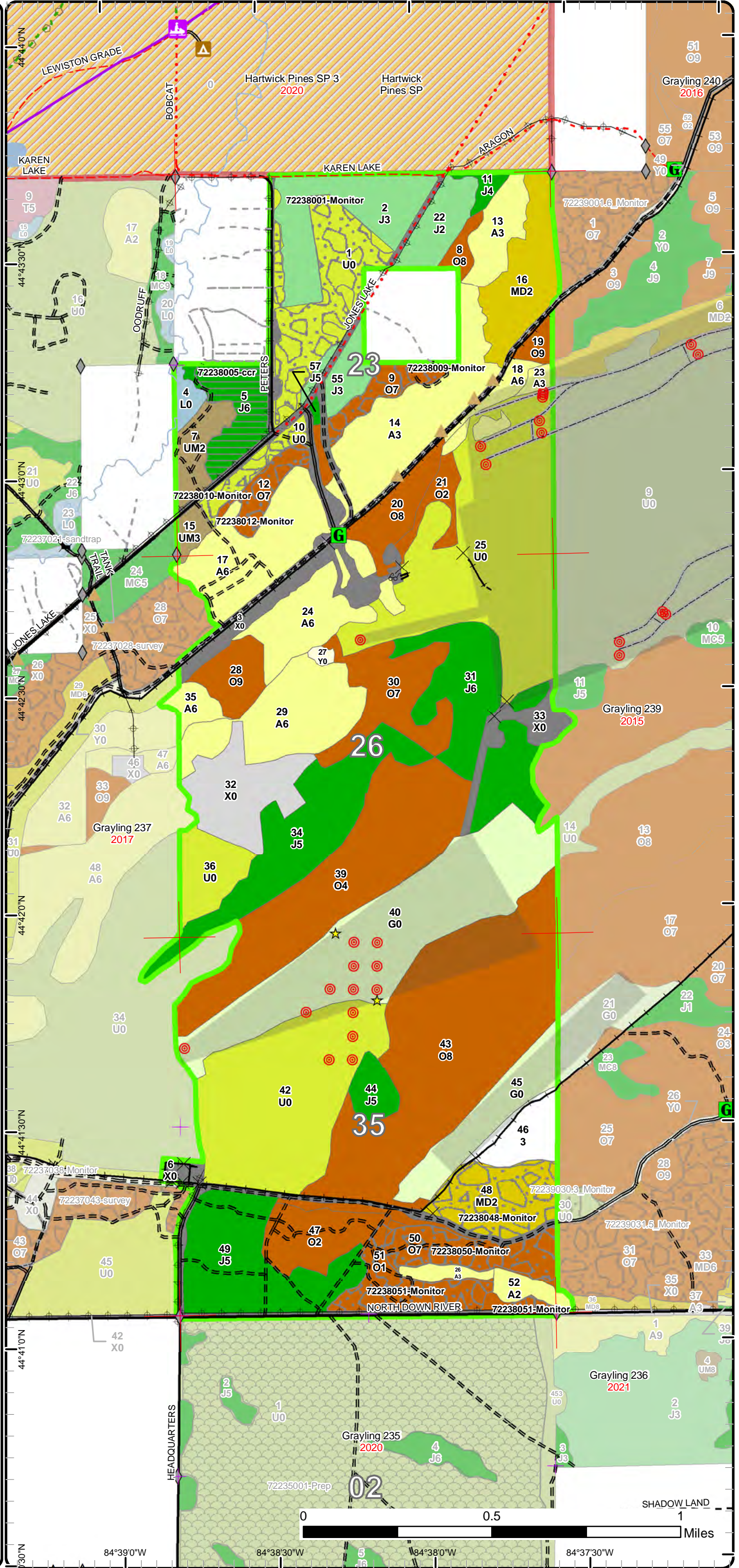
Cover Type & Treatments Map

Compartment: 238
T27N, R03W, Sec. 23, 26, 35

County: Crawford
Unit: Grayling
Mgmt Area: Camp Grayling
YOE: 2021
Acres: 1,798 GIS Calculated
Examiner: Joan Charlebois
Map Revised: 4/25/2019
Map Phase: Pre-Review



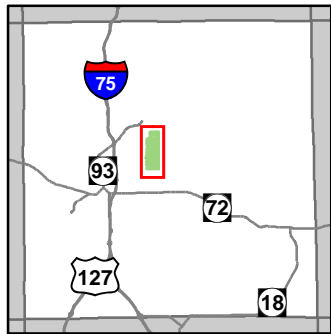
- Miris Corners
- Remonumented Section Corners
- Field Grade Corners
- Counties
- DNR - Secondary Forest Road
- DNR - Forest Access Route
- Federal / State / County - Paved Road
- Federal / State - Dirt / Gravel Road
- County - Gravel Road
- County - Dirt Road (Seasonal)
- Private - Dirt / Gravel Road
- Snowmobile Trails
- Designated Hiking Trails
- Designated Ski Trails
- Designated Snowshoe Trails
- Designated Snowmobile Trails
- Lake/Pond
- Perennial River
- Lakes and Rivers All
- Berms
- Gate
- Bridges
- Campground
- Pipeline
- Powerline
- Compartment Boundary
- Clearcut (w/Reserves)
- Regeneration Survey
- 412 - Oak Types
- 413 - Aspen
- 419 - Mixed Upland Deciduous
- 421 - Planted Pines
- 422 - Natural Pines
- 430 - Upland Mixed Forest
- 110 - Low Intensity Urban
- 122 - Roads/Parking Lot
- 310 - Herbaceous Openland
- 330 - Low Density Trees
- 622 - Lowland Shrub
- 710 - Sand/Soil
- Lakes



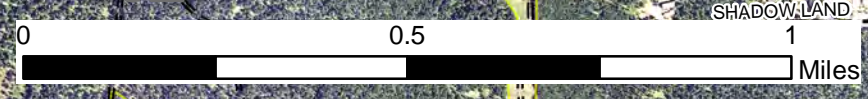
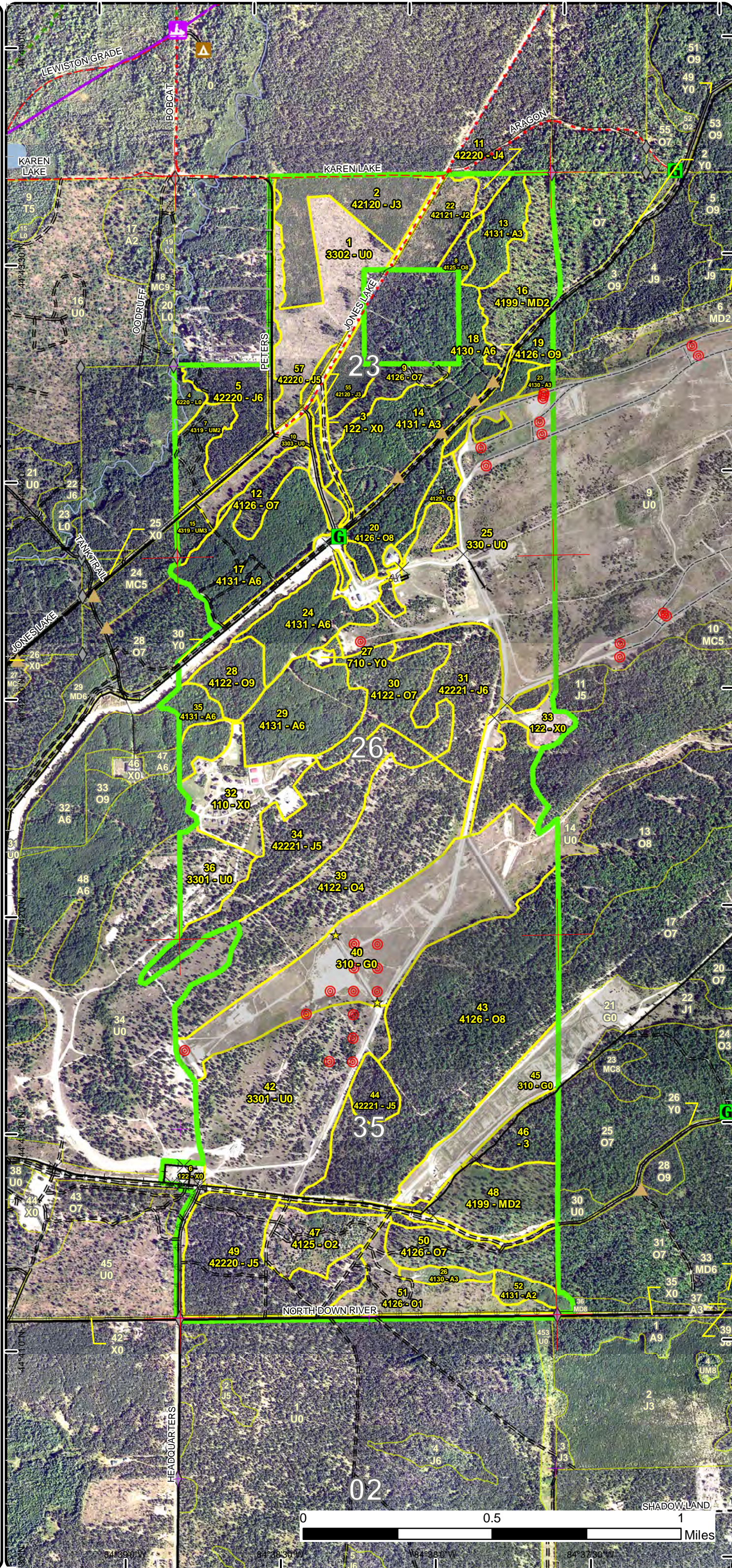
Stand Boundary Map

Compartment: 238
T27N, R03W, Sec. 23, 26, 35

County: Crawford
Unit: Grayling
Mgmt Area: Camp Grayling
YOE: 2021
Acres: 1,798 GIS Calculated
Examiner: Joan Charlebois
Map Revised: 4/25/2019
Map Phase: Pre-Review



- Miris Corners
- Remonumented Section Corners
- ◆ Field Grade Corners
- Counties
- == DNR - Secondary Forest Road
- == DNR - Forest Access Route
- Federal / State / County - Paved Road
- - - Federal / State - Dirt / Gravel Road
- - - County - Gravel Road
- - - County - Dirt Road (Seasonal)
- - - Private - Dirt / Gravel Road
- Snowmobile Trails
- Designated Hiking Trails
- Designated Ski Trails
- Designated Snowshoe Trails
- Designated Snowmobile Trails
- Lake/Pond
- Perennial River
- Lakes and Rivers All
- ▲ Berms
- Gate
- Bridges
- ▲ Campground
- Pipeline
- Powerline
- Compartment Boundary
- Stand Boundaries
- 412 - Oak Types
- 413 - Aspen
- 419 - Mixed Upland Deciduous
- 421 - Planted Pines
- 422 - Natural Pines
- 430 - Upland Mixed Forest
- 110 - Low Intensity Urban
- 122 - Roads/Parking Lot
- 310 - Herbaceous Openland
- 330 - Low Density Trees
- 622 - Lowland Shrub
- 710 - Sand/Soil

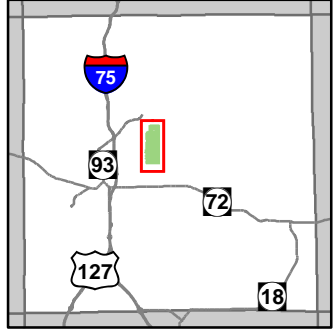


44°41'30"N 84°39'0"W 84°38'30"W 84°38'0"W 84°37'30"W

Special Conservation Areas & Site Conditions Map

Compartment: 238
T27N, R03W, Sec. 23, 26, 35

County: Crawford
Unit: Grayling
Mgmt Area: Camp Grayling
YOE: 2021
Acres: 1,798 GIS Calculated
Examiner: Joan Charlebois
Map Revised: 4/25/2019
Map Phase: Pre-Review



- Miris Corners
- + Remonumented Section Corners
- ◆ Field Grade Corners
- Counties
- DNR - Secondary Forest Road
- DNR - Forest Access Route
- Federal / State / County - Paved Road
- Federal / State - Dirt / Gravel Road
- County - Gravel Road
- County - Dirt Road (Seasonal)
- Private - Dirt / Gravel Road
- Snowmobile Trails
- Designated Hiking Trails
- Designated Ski Trails
- Designated Snowshoe Trails
- Designated Snowmobile Trails
- Lake/Pond
- Perennial River
- Lakes and Rivers All
- ▲ Berms
- G Gate
- Bridges
- ▲ Campground
- Pipeline
- Powerline
- Compartment Boundary
- Available w/ Constraints
- Unavailable
- 5B: Maintain for regeneration purposes
- 5C: Delay treatment for age/size class diversity or exceptional site quality
- 1A: Federal/State/Local Law
- 3F: Military easement / lease
- 5E: Long-Term Retention
- Stand Boundaries
- Natural Rivers Vegetative Buffer
- Natural Rivers Zoning District
- Eastern Massasauga Managed Land
- Kirtland Warbler Habitat
- Cold Water Streams
- High Priority Trout Stream Buffer
- Research, Development, and Military Lands

