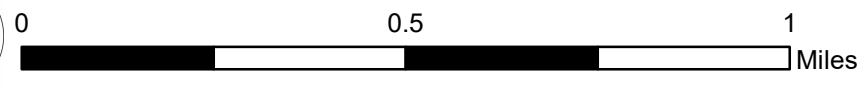
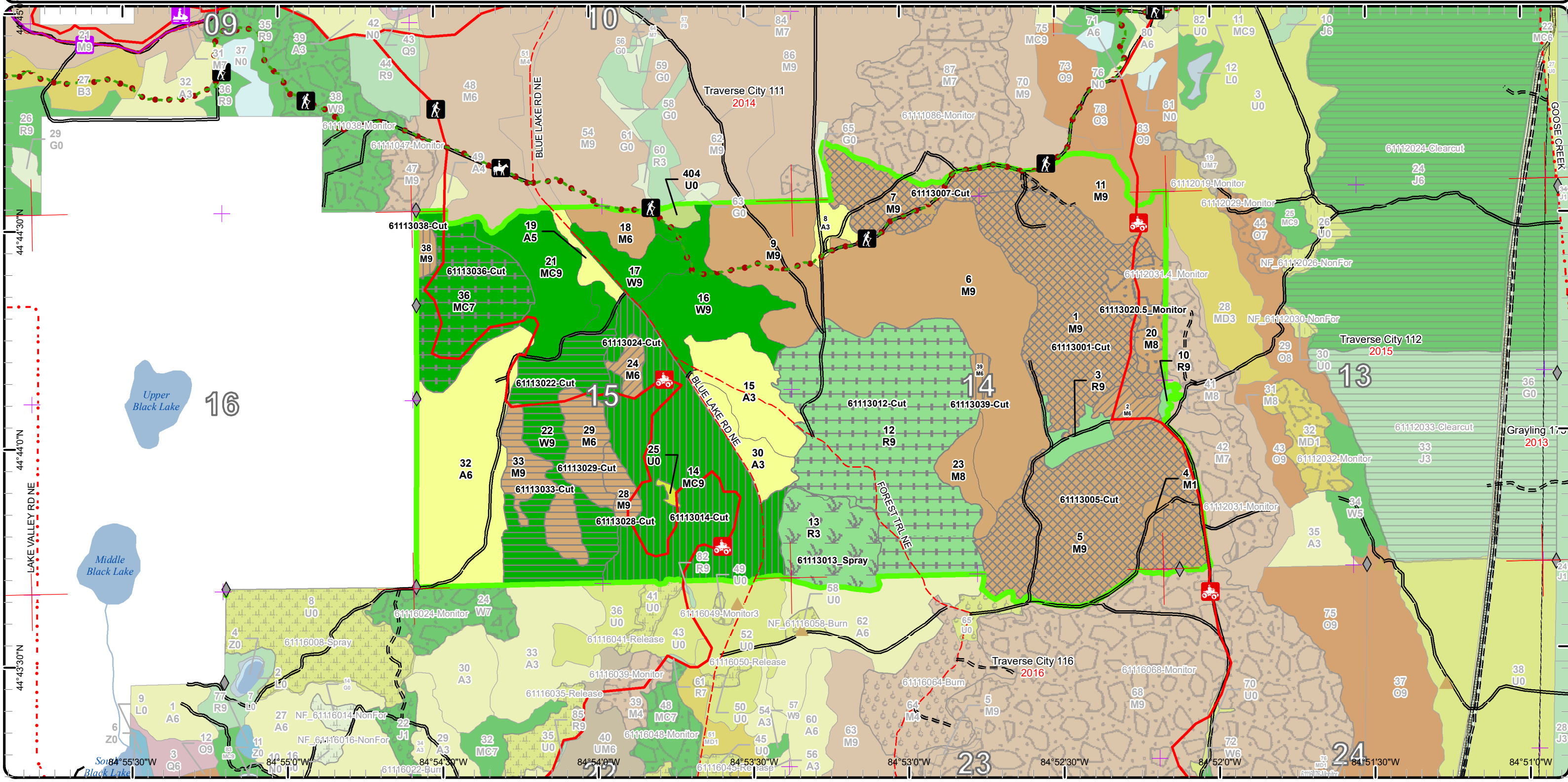


# Cover Type & Treatments Map

Compartment: 113  
 T27N, R05W, Sec. 11, 13, 14, 15, 23  
 County: Kalkaska  
 Unit: Traverse City  
 Mgmt Area: Grayling Ice Contact  
 YOE: 2021  
 Acres: 1,337 GIS Calculated  
 Examiner: Katie Armstrong  
 Map Revised: 11/18/2019  
 Map Phase: Post Review

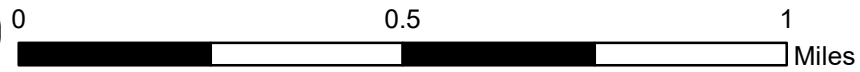


- Miris Corners
- + Remonumented Section Corners
- ◆ Field Grade Corners
- Counties
- DNR - Secondary Forest Road
- DNR - Forest Access Route
- County - Gravel Road
- County - Dirt Road (Seasonal)
- Hiking Trails
- Horse Trails
- ORV Trails
- Snowmobile Trails
- Designated Hiking Trails
- Designated Equestrian Trails
- Designated ATV Trails
- Designated ORV Route
- Designated Snowmobile Trails
- Pipeline
- Compartment Boundary
- Pesticide
- Selection (Group, Single Tree)
- Clearcut (w/Reserves)
- Harvest, Overstory Removal
- Thinning (Crown, Low, Systematic)
- Regeneration Survey
- Shelter Wood (w/Reserves)
- 411 - Northern Hardwood
- 413 - Aspen
- 421 - Planted Pines
- 422 - Natural Pines
- 320 - Upland Shrub
- 330 - Low Density Trees

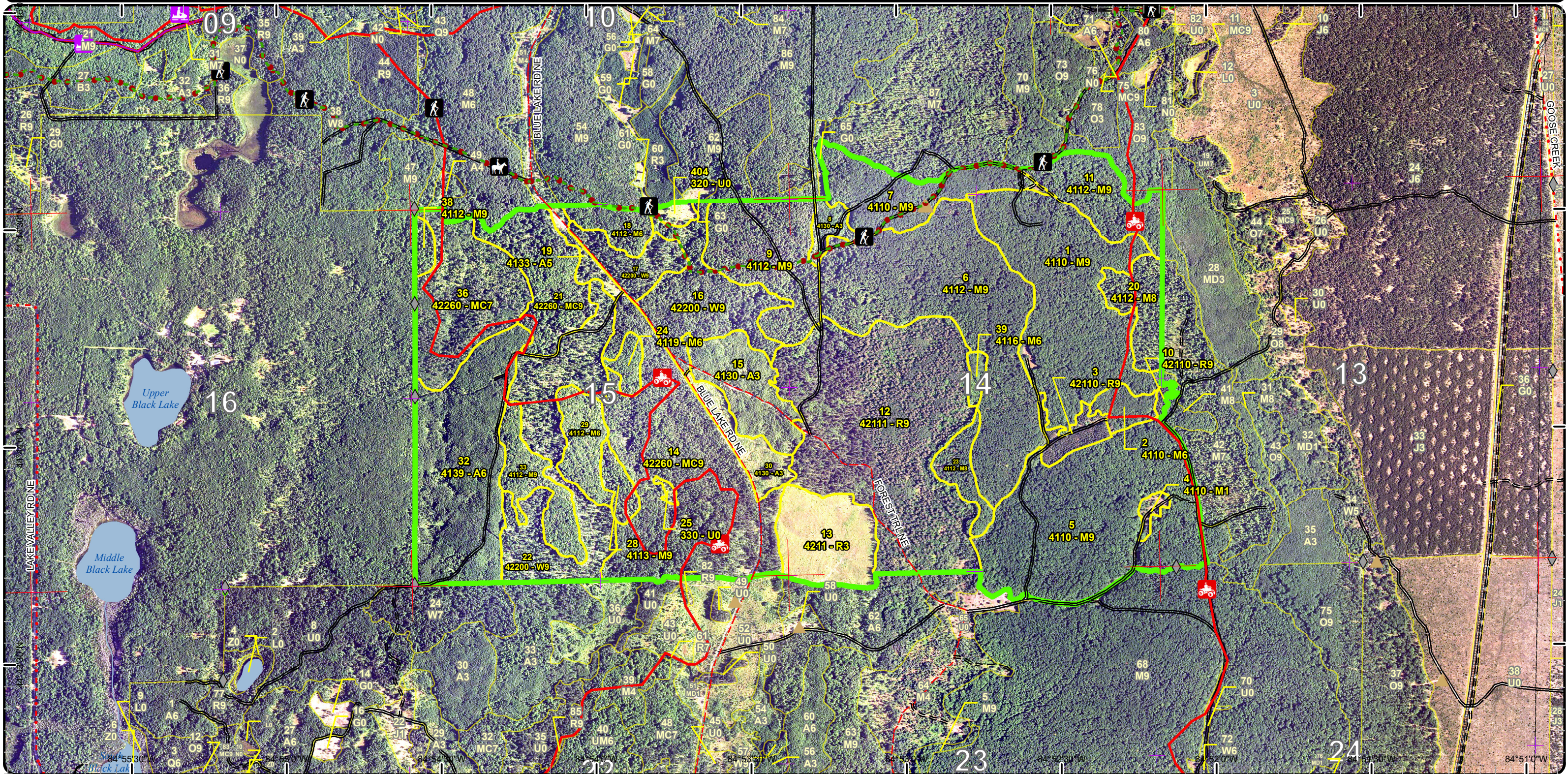


# Stand Boundary Map

Compartment: 113  
 T27N, R05W, Sec. 11, 13, 14, 15, 23  
 County: Kalkaska  
 Unit: Traverse City  
 Mgmt Area: Grayling Ice Contact  
 YOE: 2021  
 Acres: 1,337 GIS Calculated  
 Examiner: Katie Armstrong  
 Map Revised: 11/18/2019  
 Map Phase: Post Review

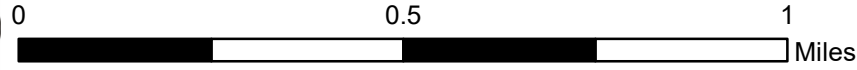


- Miris Corners
- + Remonumented Section Corners
- ◆ Field Grade Corners
- Counties
- DNR - Secondary Forest Road
- DNR - Forest Access Route
- County - Gravel Road
- County - Dirt Road (Seasonal)
- 🚶 Hiking Trails
- 🐎 Horse Trails
- 🛵 ORV Trails
- 🚙 Snowmobile Trails
- Designated Hiking Trails
- Designated Equestrian Trails
- Designated ATV Trails
- - - Designated ORV Route
- Designated Snowmobile Trails
- ▲ Berms
- Lake/Pond
- Perennial River
- Lakes and Rivers
- Pipeline
- Compartment Boundary
- Stand Boundaries
- 422 - Natural Pines
- 320 - Upland Shrub
- Designated ATV Trails
- Designated ORV Route
- Designated Snowmobile Trails
- Berms
- Lake/Pond
- Perennial River
- Lakes and Rivers
- Pipeline
- Compartment Boundary
- Stand Boundaries
- 411 - Northern Hardwood
- 413 - Aspen
- 421 - Planted Pines



# Special Conservation Areas & Site Conditions Map

Compartment: 113  
 T27N, R05W, Sec. 11, 13, 14, 15, 23  
 County: Kalkaska  
 Unit: Traverse City  
 Mgmt Area: Grayling Ice Contact  
 YOE: 2021  
 Acres: 1,337 GIS Calculated  
 Examiner: Katie Armstrong  
 Map Revised: 11/18/2019  
 Map Phase: Post Review



- Miris Corners
- + Remonumented Section Corners
- ◆ Field Grade Corners
- Counties
- DNR - Secondary Forest Road
- DNR - Forest Access Route
- County - Gravel Road
- County - Dirt Road (Seasonal)
- ▲ Hiking Trails
- ▲ Horse Trails
- ▲ ORV Trails
- ▲ Snowmobile Trails
- Designated Hiking Trails
- Designated Equestrian Trails
- Designated ATV Trails
- - - Designated ORV Route
- Designated Snowmobile Trails
- ▲ Berms
- Lake/Pond
- Perennial River
- Lakes and Rivers
- Pipeline
- Compartment Boundary
- Available w/ Constraints
- Unavailable
- 5C: Delay treatment for age/size class diversity or exceptional site quality
- 5E: Long-Term Retention
- Stand Boundaries
- Kirtland Warbler Habitat
- Cold Water Streams
- Cold Water Lakes
- Research, Development, and Military Lands

