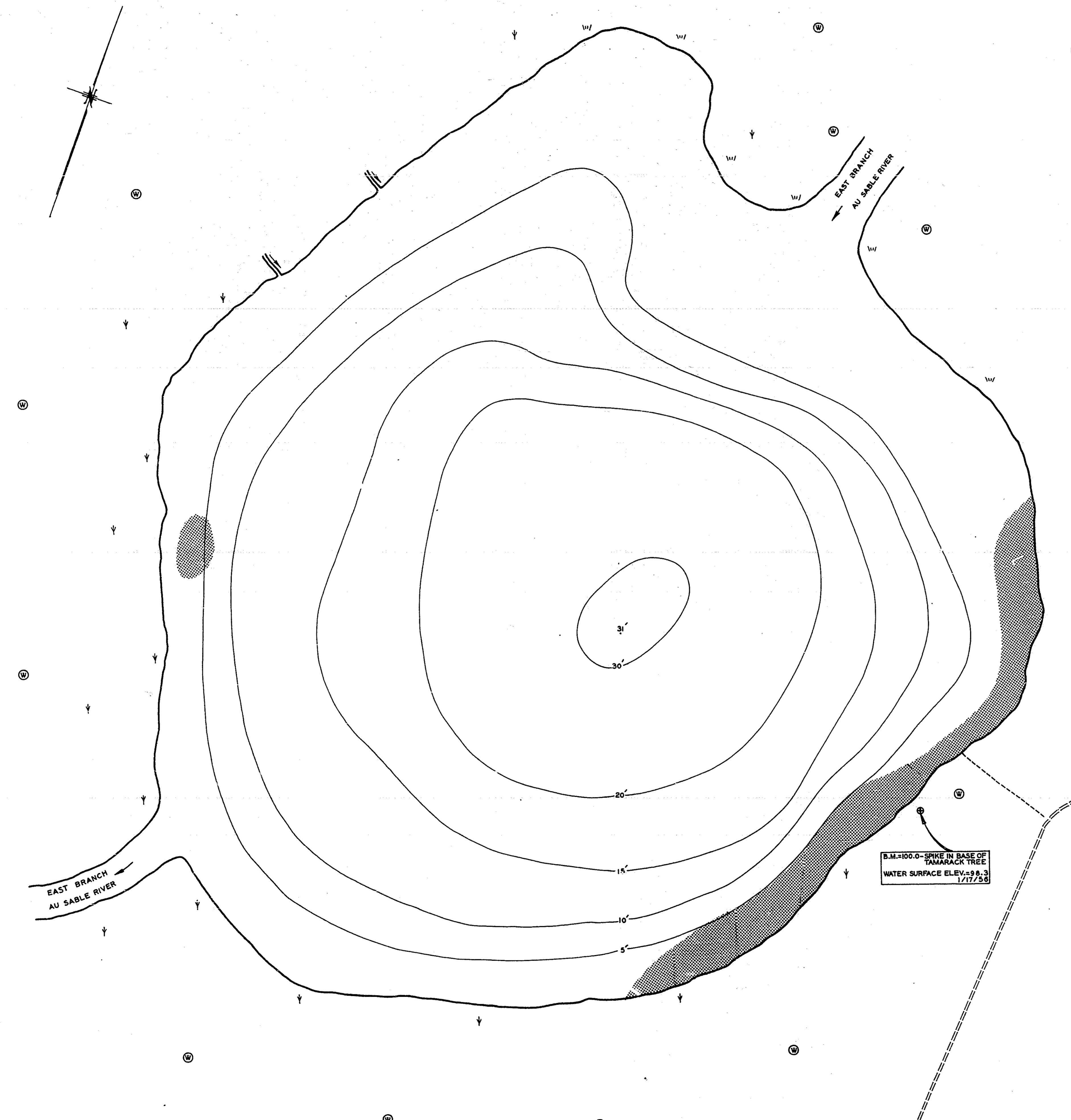


INSTITUTE FOR FISHERIES RESEARCH
 DIVISION OF FISHERIES MICHIGAN CONSERVATION DEPT.

LAKE INVENTORY MAP
RIVER LAKE

AREA 12.6 ACRES
 MARGINAL SURVEY AND SOUNDINGS 1/17/56
 CRAWFORD COUNTY T. 28 N., R. 2 W. SEC. 30



LEGEND

BOTTOM

- Sand
- Organic

OUTLINE & CONTOURS

- Shoreline
- Contours

SHORE FEATURES

- Unimproved road
- Trail
- Marsh
- Brush
- Wooded
- Inlet
- Outlet

B.M. 100.0 - SPIKE IN BASE OF
 TAMARACK TREE
 WATER SURFACE ELEV. = 98.3
 1/17/56

