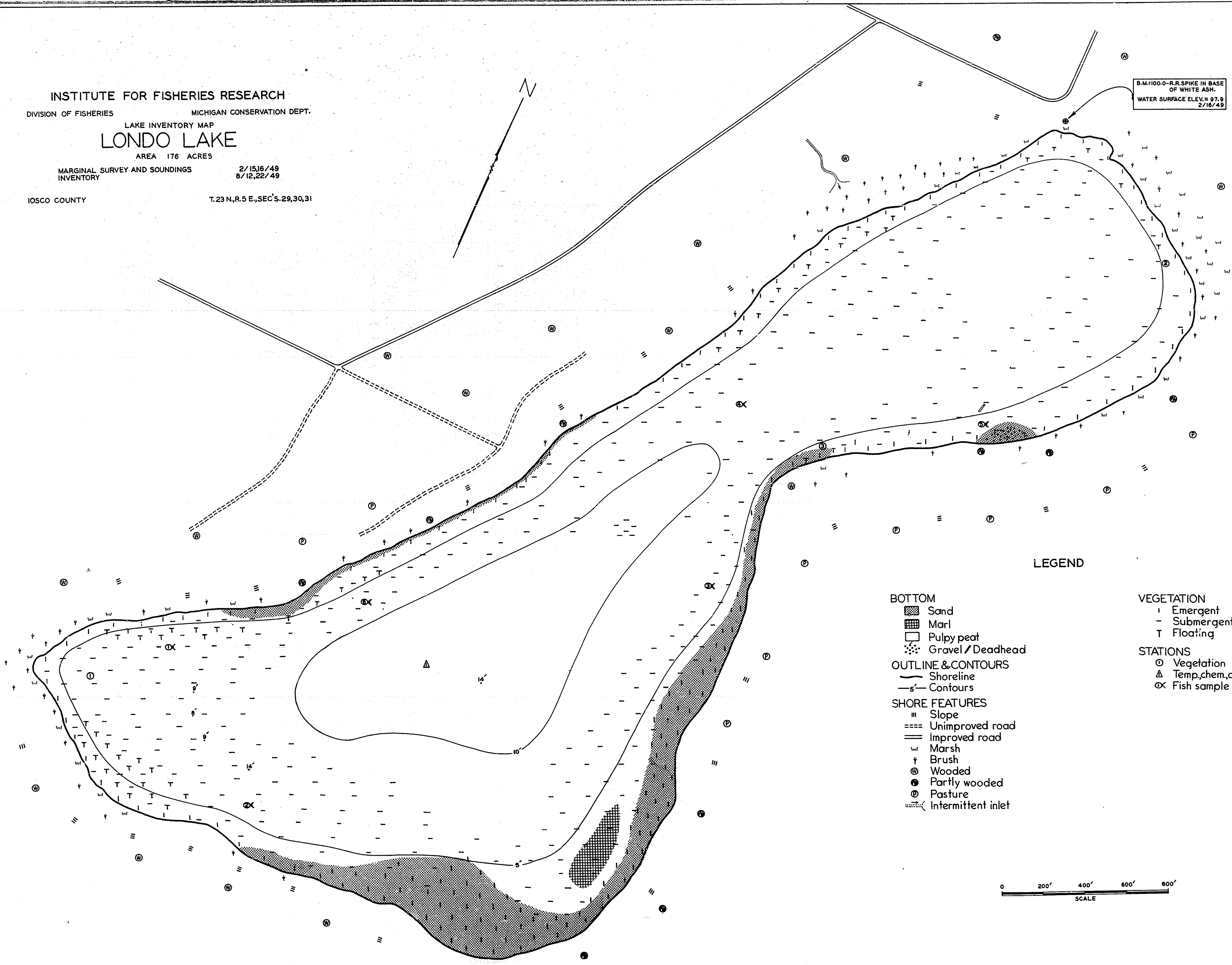


INSTITUTE FOR FISHERIES RESEARCH  
 DIVISION OF FISHERIES MICHIGAN CONSERVATION DEPT.  
 LAKE INVENTORY MAP  
**LONDO LAKE**  
 AREA 176 ACRES  
 MARGINAL SURVEY AND SOUNDINGS INVENTORY 2/15,16/49  
 8/12,22/49  
 IOSCO COUNTY T.23 N.,R.5 E.,SEC'S.29,30,31

B.M.:100-0-R.R.SPIKE IN BASE OF WHITE ASH.  
 WATER SURFACE ELEV.= 97.9  
 2/16/49



LEGEND

- BOTTOM**
- ▨ Sand
  - ▩ Marl
  - Pulpy peat
  - ⊘ Gravel / Deadhead
- OUTLINE & CONTOURS**
- Shoreline
  - 5'- Contours
- SHORE FEATURES**
- ▨ Slope
  - ==== Unimproved road
  - == Improved road
  - ⊘ Marsh
  - † Brush
  - ⊙ Wooded
  - Partly wooded
  - ⊙ Pasture
  - ⊘ Intermittent inlet

- VEGETATION**
- † Emergent
  - Submergent
  - T Floating
- STATIONS**
- ⊙ Vegetation
  - △ Temp,chem,analysis
  - ⊘ Fish sample

