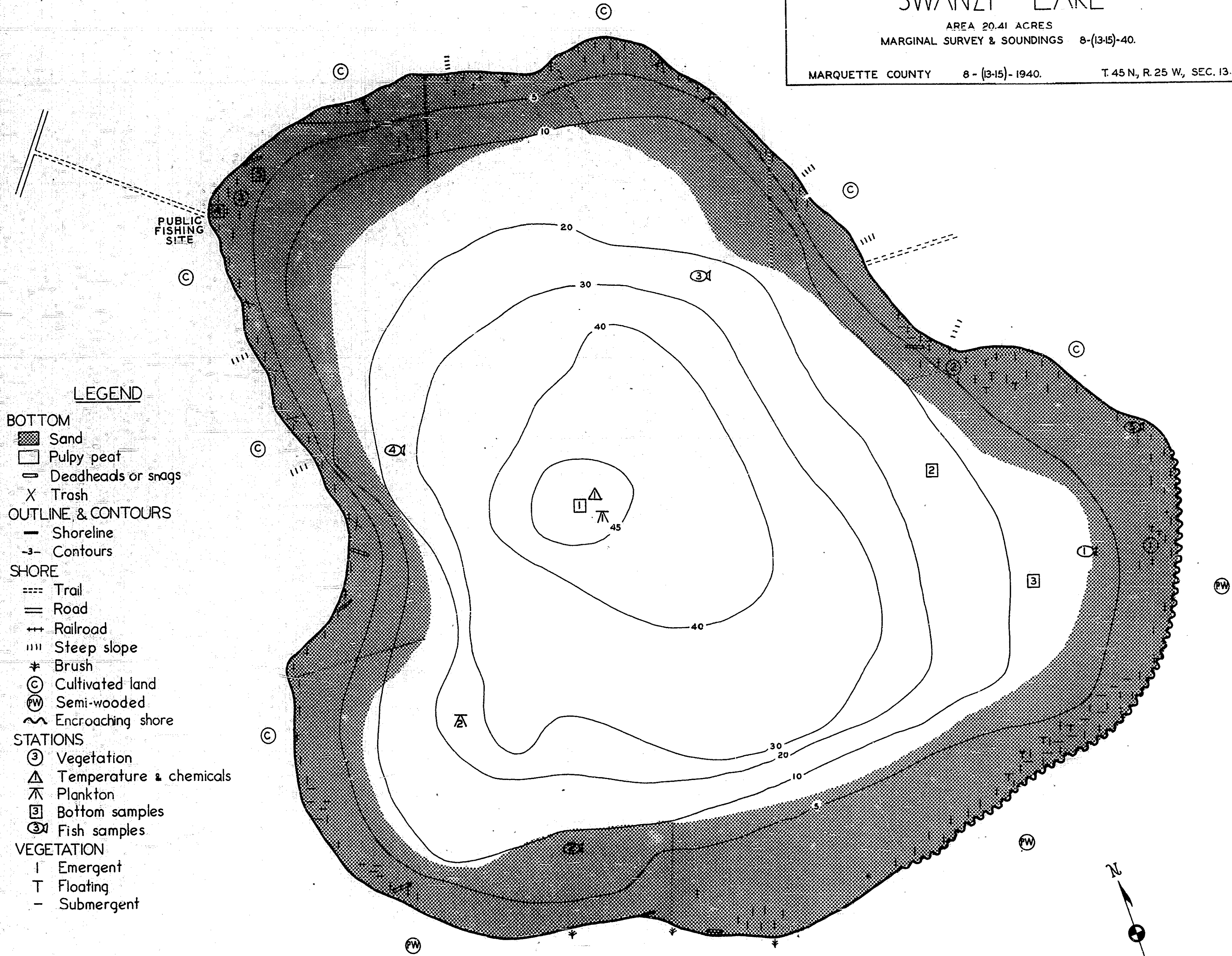
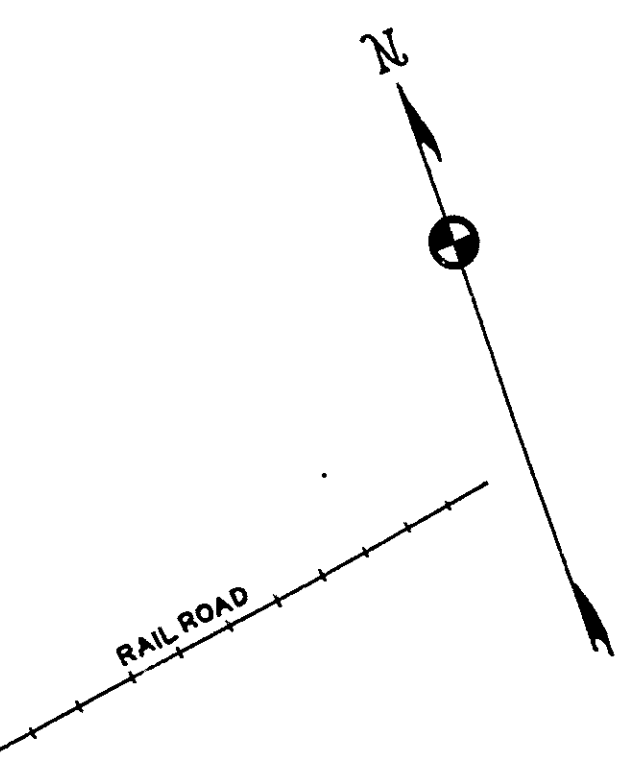


INSTITUTE FOR FISHERIES RESEARCH
 DIVISION OF FISHERIES MICHIGAN CONSERVATION DEPT.
 LAKE INVENTORY MAP
SWANZY LAKE
 AREA 20.41 ACRES
 MARGINAL SURVEY & SOUNDINGS 8-(13-15)-40.
 MARQUETTE COUNTY 8 - (13-15) - 1940. T. 45 N., R. 25 W., SEC. 13.



- LEGEND**
- BOTTOM**
 Sand
 Pulp peat
 Deadheads or snags
 X Trash
- OUTLINE & CONTOURS**
 Shoreline
 Contours
- SHORE**
 Trail
 Road
 Railroad
 Steep slope
 Brush
 Cultivated land
 Semi-wooded
 Encroaching shore
- STATIONS**
 Vegetation
 Temperature & chemicals
 Plankton
 Bottom samples
 Fish samples
- VEGETATION**
 Emergent
 Floating
 Submergent



L.R.A.

SWANZY LAKE (LINDMAN) Marquette Co. T. 45 N., R. 25 W., SEC. 13.