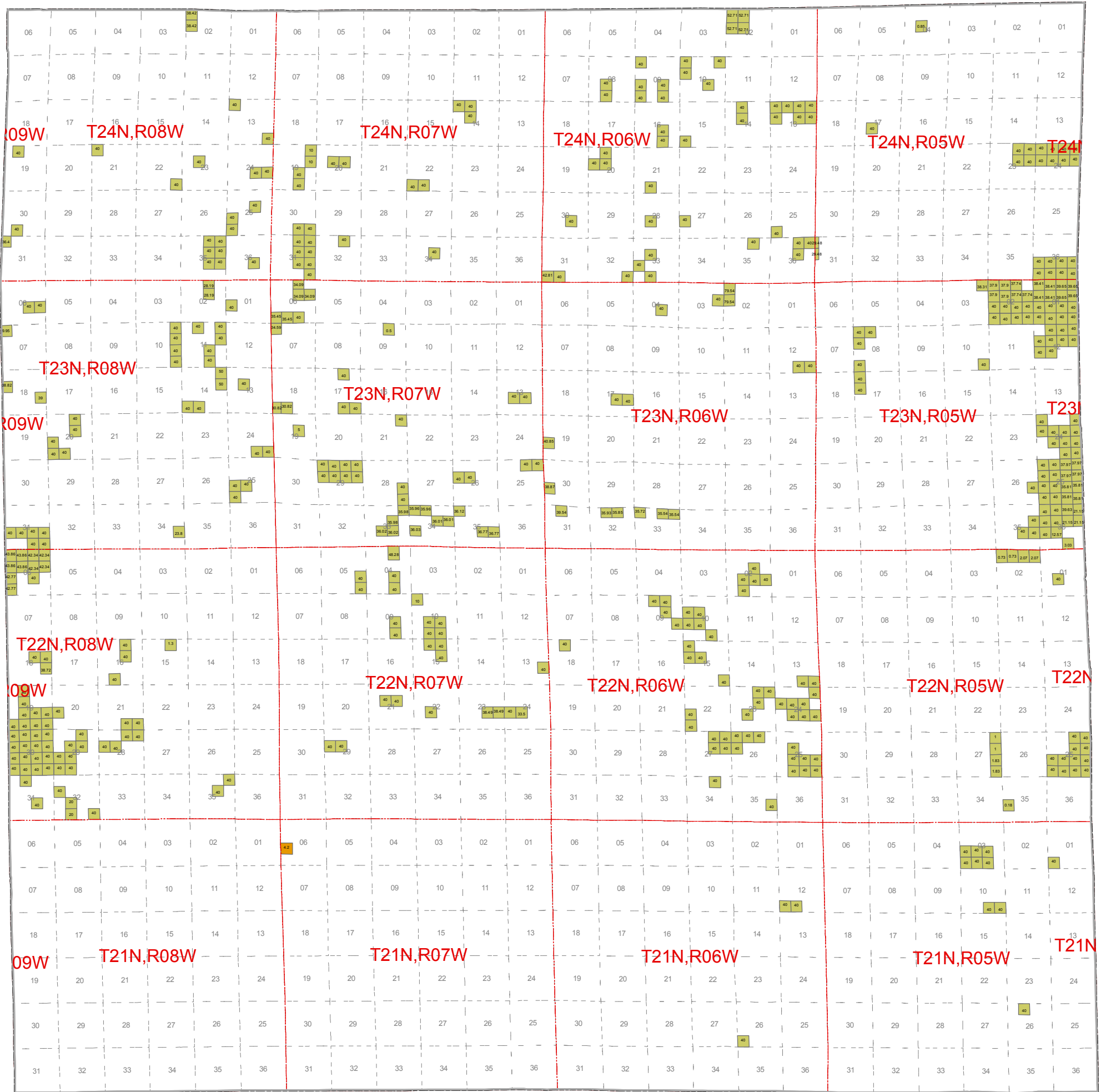




May 2010 Mineral Lease Auction Missaukee County



Legend

- | | |
|--|-----------------------------------|
| Antares Exploration Fund Limited Partnership | Mason Dixon Energy LLC, |
| Atlas Gas & Oil Company, LLC | Meridian Energy Corporation |
| BreitBurn Operating Limited Partnership | O.I.L. Niagaran L.L.C. |
| Coughlin Land Services, LLC | Pine Energy, LLC |
| DTE Gas Storage Company | Robert J. Mannes |
| Dennis R. Schumde, d/b/a Schumde Oil | Sasquatch Exploration LLC |
| Energy West Corporation | Savoy Energy, L.P. |
| Exterra Resources, LLC | Trendwell Energy Corporation |
| Great Lakes Resources, LLC | Wolverine Gas and Oil Corporation |
| Jordan Development Company, L.L.C. | Counties |



(= Lease Acres)

Note: Some Leased blocks may contain more than one lessee.
See Spreadsheet for more detailed information.