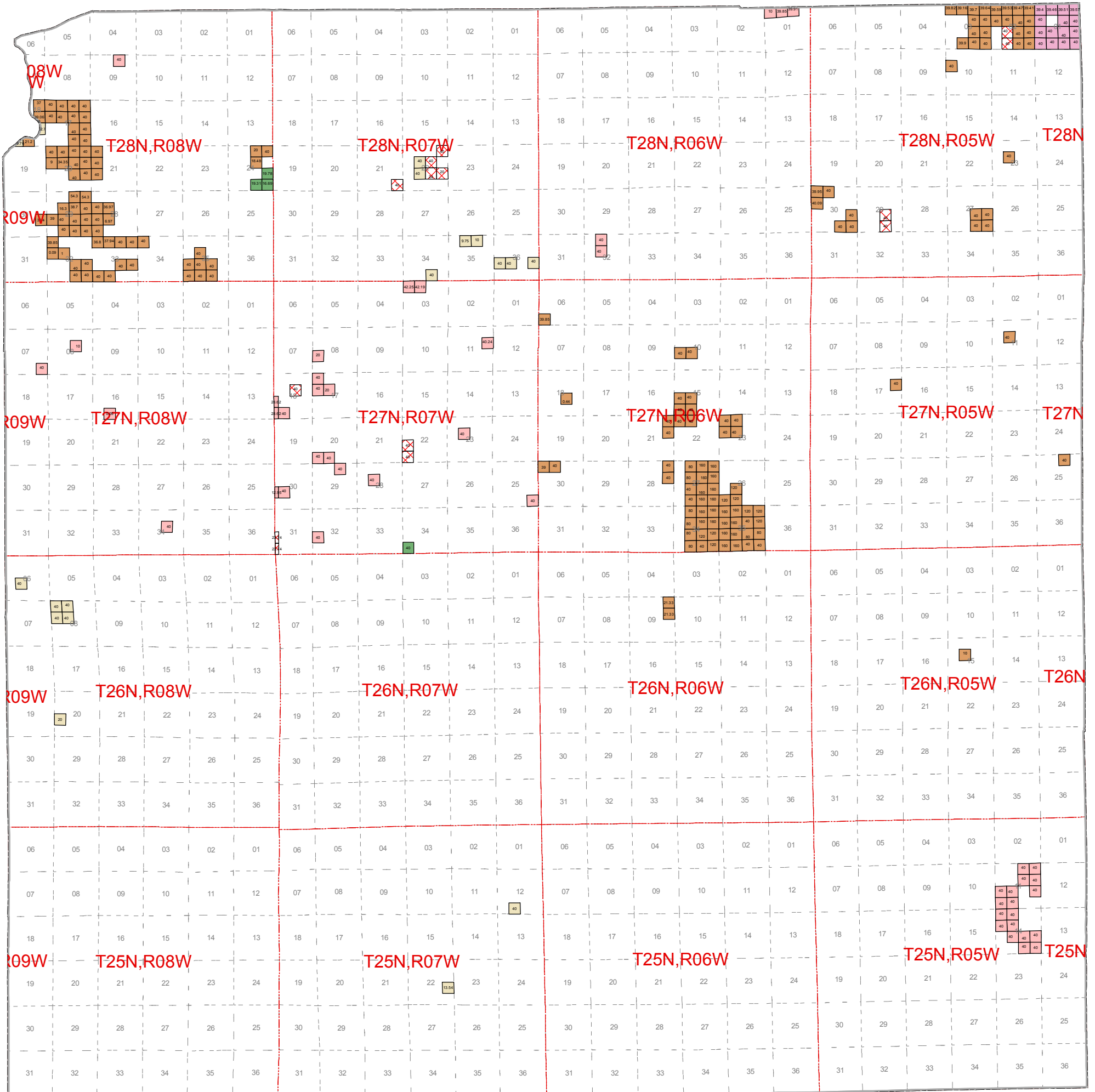
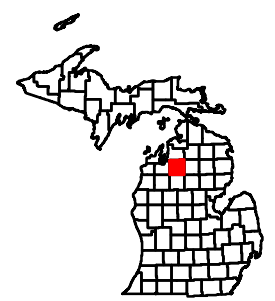


# October 2010 Mineral Lease Auction Kalkaska County



### Legend

- |   |                                    |   |
|---|------------------------------------|---|
| Atlas Gas & Oil Company, LLC            | Harvey M. Langworthy               | Presidium Antrim West, LC               |
| Bayside Energy LLC                      | Jordan Development Company, L.L.C. | Ranch Production, L.L.C.                |
| Borders Exploration L.L.C.              | Kosco Energy Group, LLC            | SRW, Inc.                               |
| BreitBurn Operating Limited Partnership | Larks Properties, LLC              | Savoy Energy, L.P.                      |
| Coughlin Land Services, LLC             | Meridian Energy Corporation        | Strickler Resources Limited Partnership |
| Crystal Lake Resources L.L.C.           | Monitor Energy Partners, L.P.      | Trendwell Energy Corporation            |
| DTE Gas Storage Company                 | Muskegon Development Company       | Western Land Services, Inc.             |
| Dennis R. Schumde, d/b/a                | New Horizon Energy Company L.L.C.  | Whiting Oil and Gas Corporation         |
| Encana Oil & Gas (USA) Inc.             | Northcentral Exploration, LLC      | Counties                                |



= Lease Acres

Note: Some Leased blocks may contain more than one lessee.  
See Spreadsheet for more detailed information.