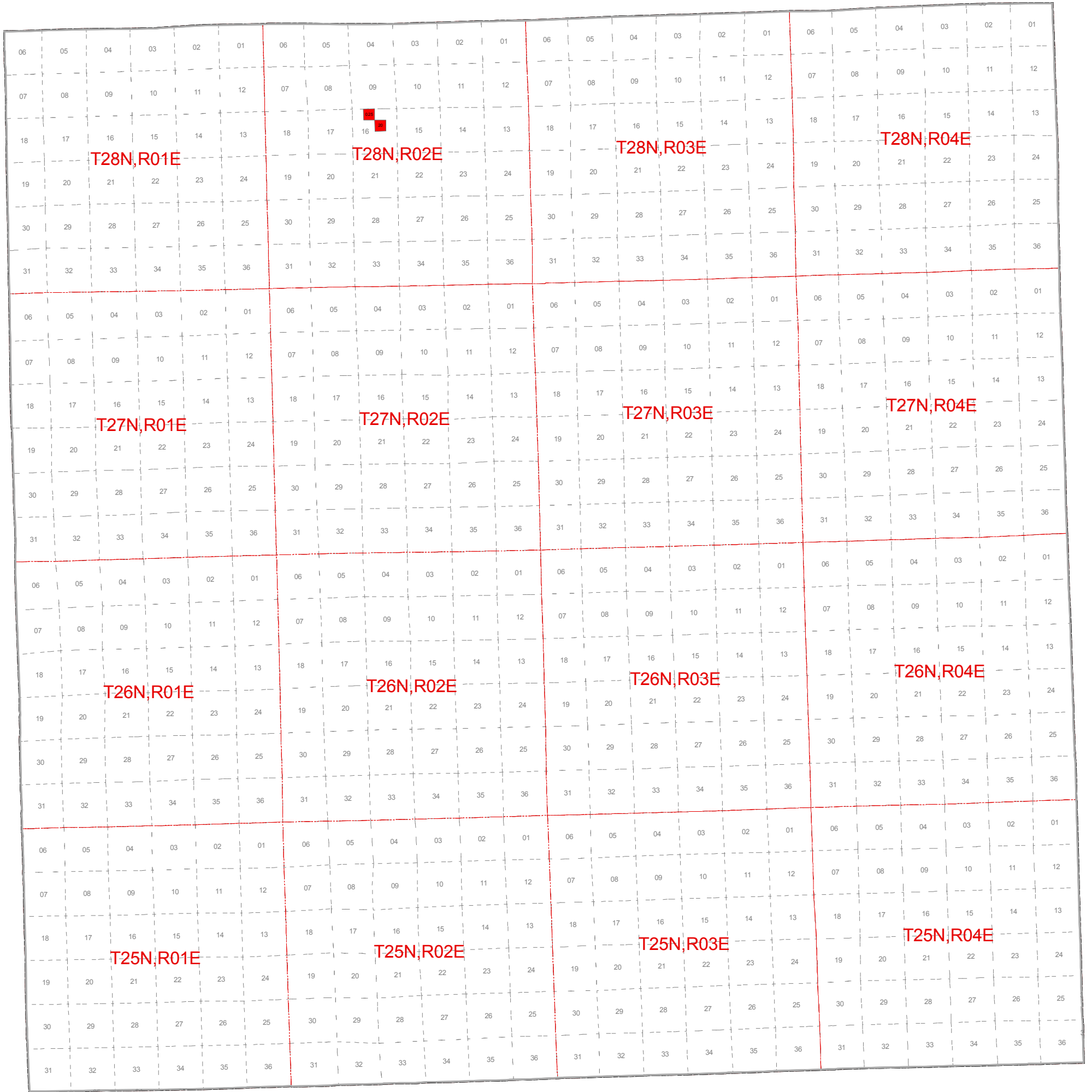




# May 2011 Mineral Lease Auction Oscoda County



## Legend

- |  |                                   |                                |
|--|-----------------------------------|--------------------------------|
| Antares Exploration Fund Limited Partnership | Encana Oil & Gas (USA) Inc.       | Primeau Commercial, Inc.       |
| Arbor Operating, L.L.C.                      | Griffith Land Services, Inc.      | Stephen Cavender               |
| BreitBurn Operating Limited Partnership      | Jordan Development Company, L.L.C | Western Land Services, Inc.    |
| CORE Energy, LLC                             | Kosco Energy Group, LLC           | Westgrove Energy Holdings, LLC |
| Dennis R. Schumde, d/b/a Schumde Oil         | Meridian Energy Corporation       | Counties                       |
| Elexco Land Services, Inc.                   | Monitor Energy Partners, L.P.     |                                |



= Lease Acres

Note: Some Leased blocks may contain more than one lessee.  
See Spreadsheet for more detailed information.