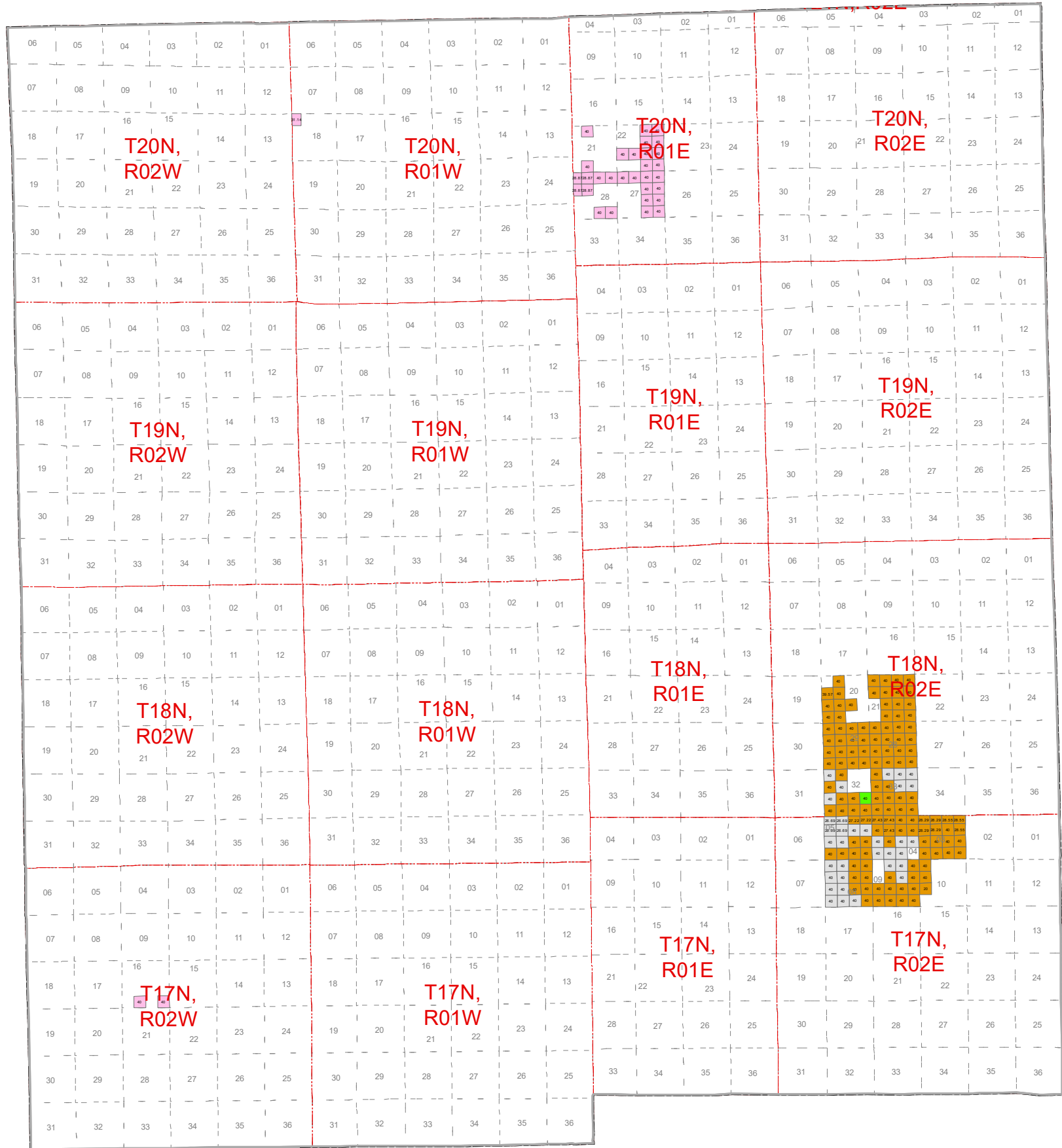




May 2016 Mineral Lease Auction Gladwin County



Legend

- CORE Energy, LLC
- Jordan Development Company, L.L.C.
- Kosco Energy Group, LLC
- Maness Petroleum Corporation
- Maritz Land Company LLC
- Quantum Energy, Inc.
- West Bay Exploration Company
- Western Land Services, Inc.



Date: 06/22/2016

= Lease Acres

Note: Some Leased blocks may contain more than one lessee.
See Spreadsheet for more detailed information.