

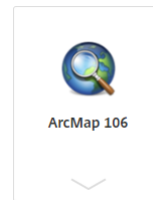
# Michigan Department of Natural Resources

## Creating Shapefiles and Map Caches for MobileMap

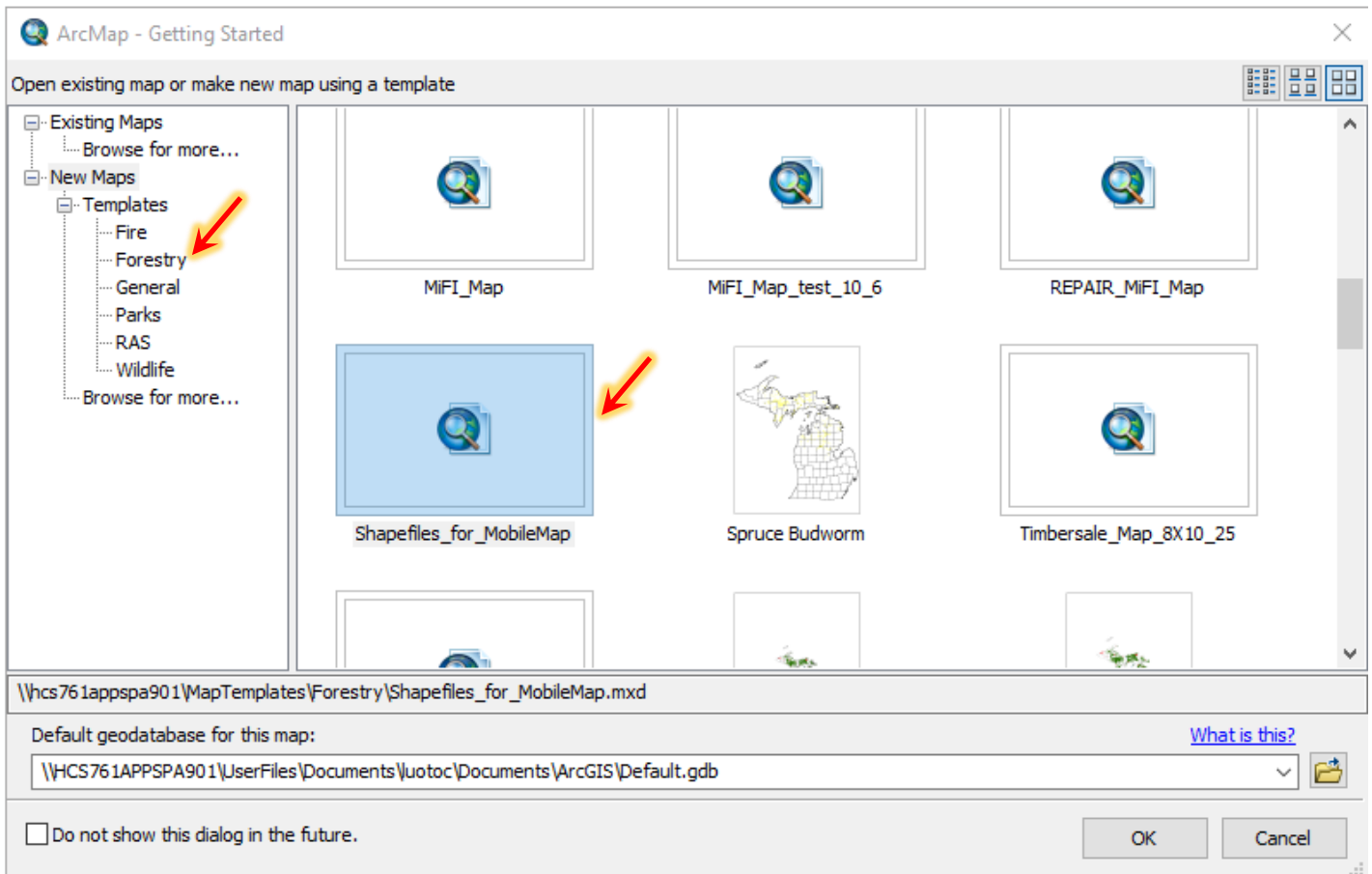


Log into Citrix and Launch the ArcMap Application. If you are doing this remotely, you will need to use VPN.

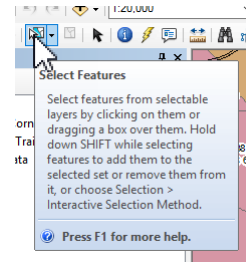
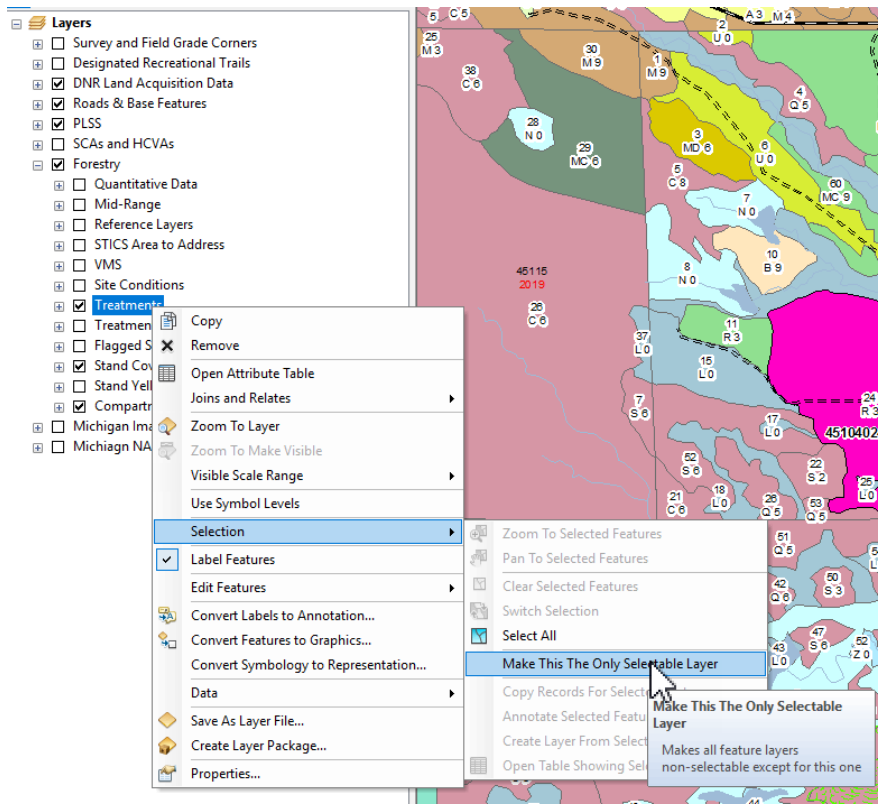
[Citrix](#)



Under Forestry, Choose the Shapefiles\_for\_MobileMap Template

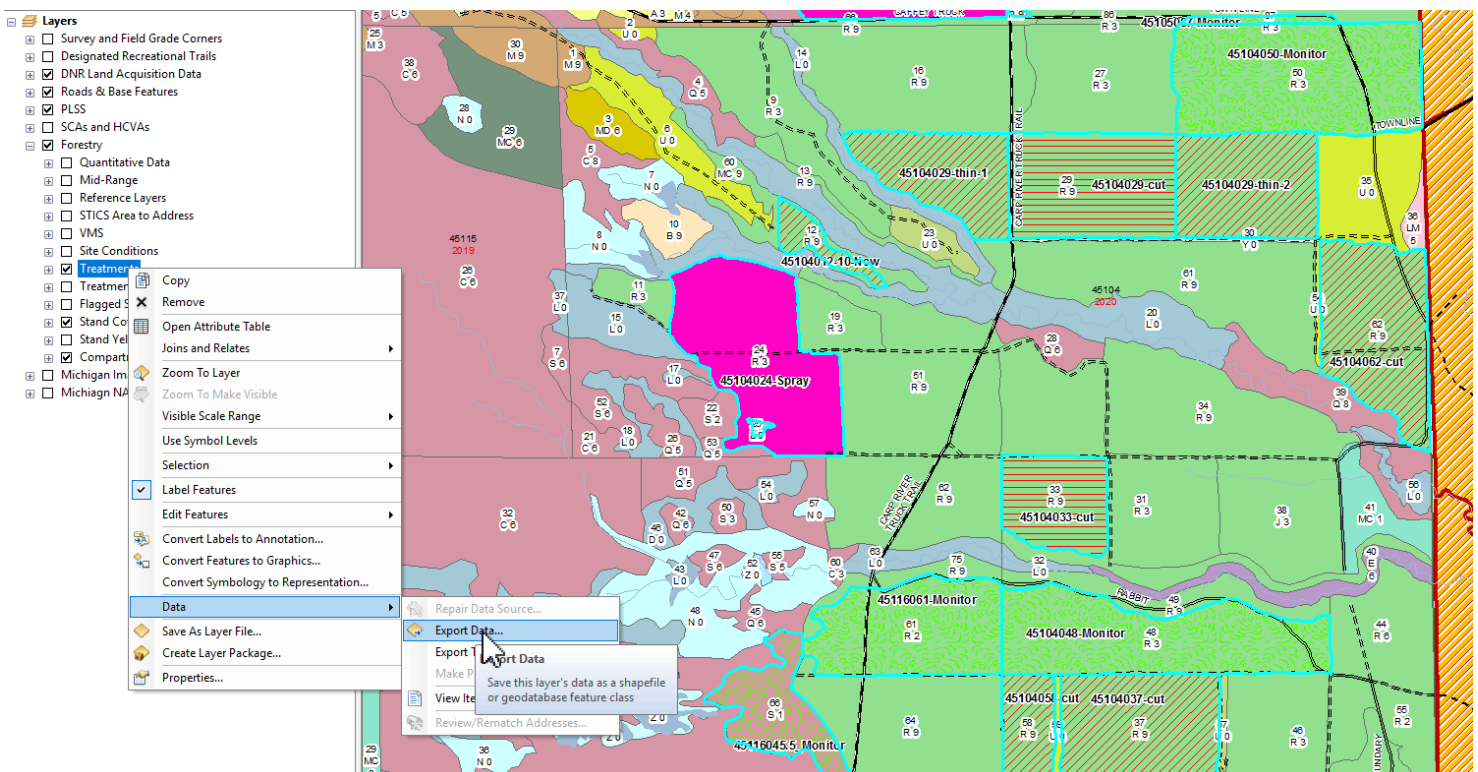


1. Zoom to the area of the map or compartment you want to make a shapefile.
2. Right click on the layer you want to make a shapefile of in the table of contents, click on selection in the pop up menu and then click on Make this the only Selectable Layer

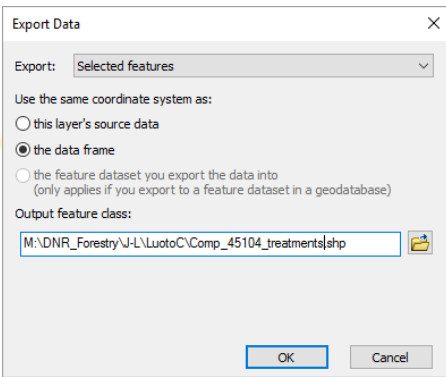


3. Click on the White Select Feature tool in the ribbon. On your map, draw a box selecting the feature you want to export as a shapefile.

4. After your features are selected, right click on the layer in the table of contents again. The select Data in the pop up menu and then, Export Data

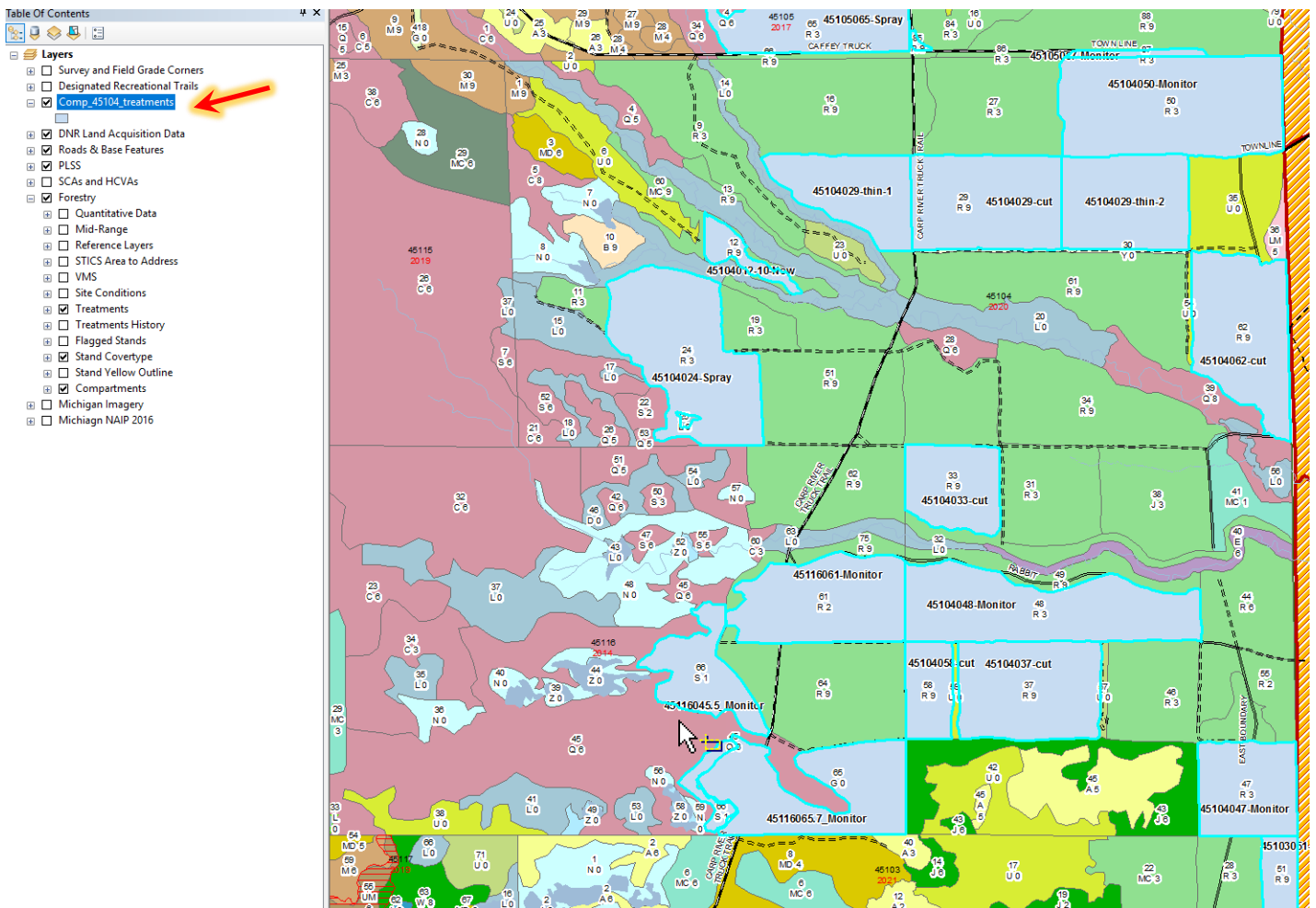
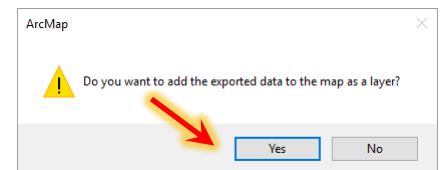


4. In the Export Data window, you have to choose the coordinate system as the data frame. You will also name your shapefile and save it to your M drive.

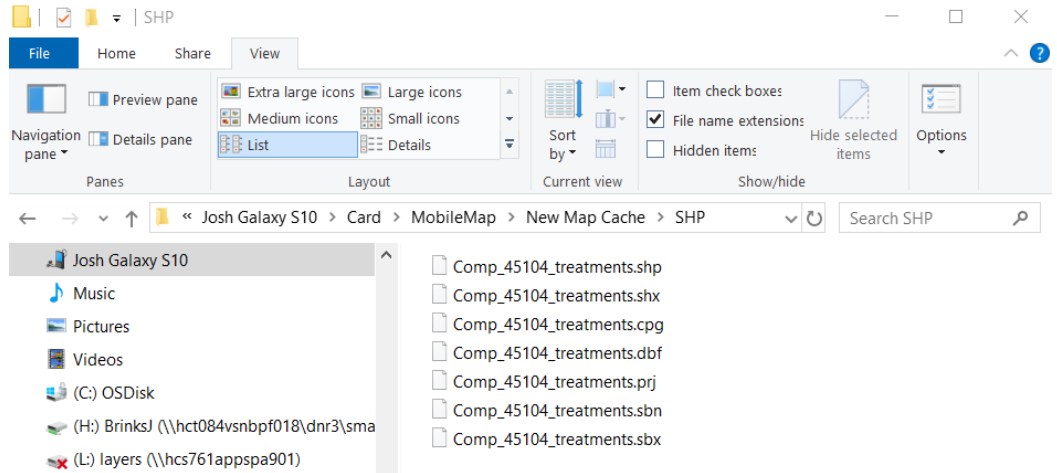
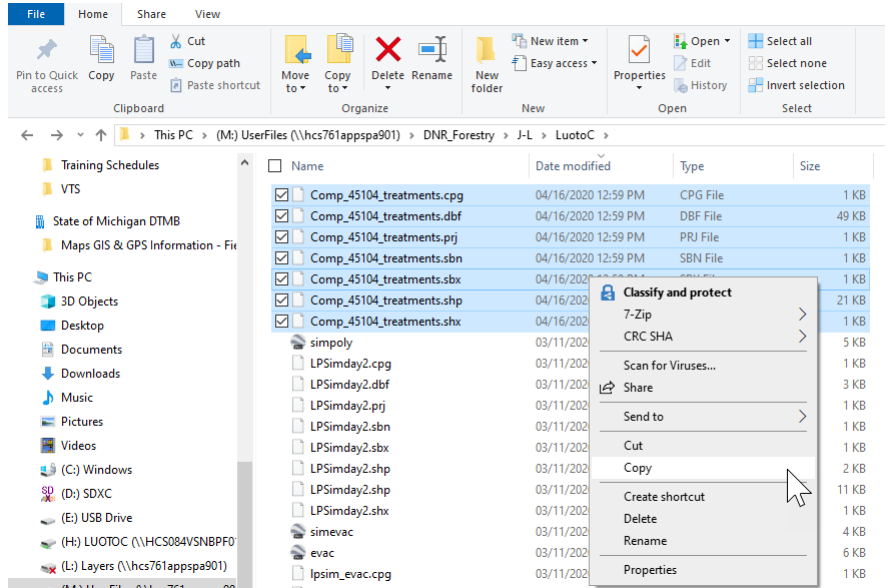


**\*\*\*You have to choose the coordinate system as the date frame. If you do not, your shape file will not project properly ion MobileMap.\*\*\***

5. You can add your new shapefile to the map to ensure your created what you wanted.



5. You now need to navigate to your M drive and copy the shapefile to the map cache on your phone or tablet. Paste the file into the SHP folder. If you do not have a Map Cache set up see the instructions on the following pages.



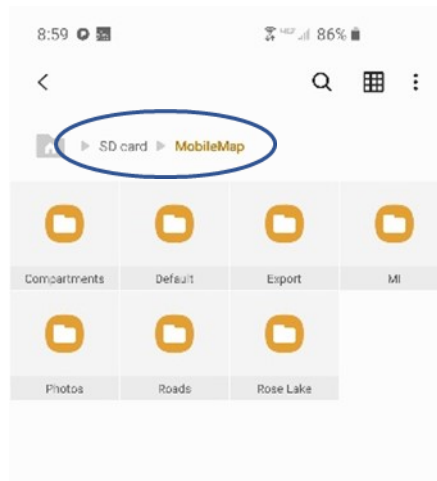
## Creating A Map Cache

A map cache is just a folder on the MobileMap file directory that contains TPK's and shapefiles. In MobileMap, when a map cache is selected only the default TPK and the TPK/SHP in that map cache will be displayed. In order to see the data in another map cache you must change to that cache. A map cache is a great way to organize the map files on your device. For example, if you are doing inventory in a compartment and you have specific shapefiles built just for that area (trails, OFS, Gates, Berms...) you may want to create a map cache of that data so that it does not clutter up MobileMap when you are working in other locations. Think of it like a project folder.

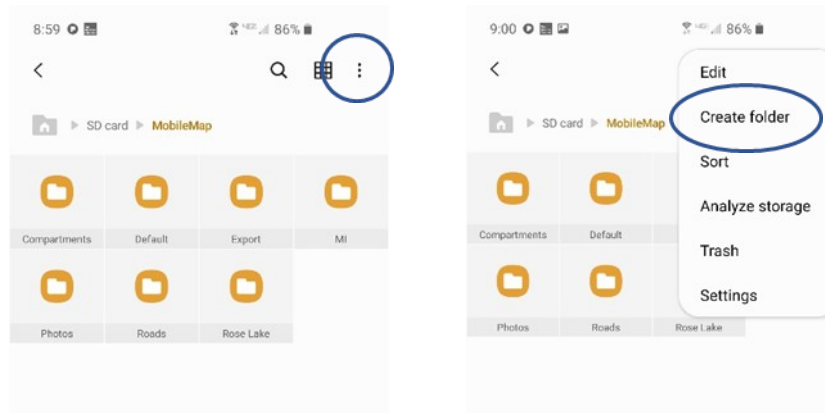
Here are the steps to creating a map cache on your mobile device. These steps can also be done while your device is plugged into a computer via file explorer. The concept is the same but looks a little different.

### 1. Create a new map cache folder in the MobileMap file directory

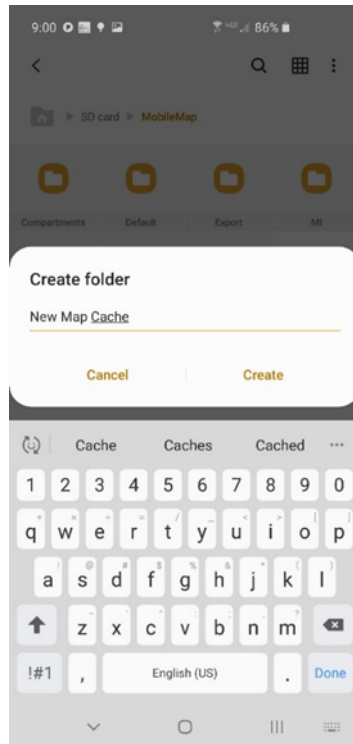
A. Navigate to the MobileMap file directory on your SD card (internal storage if using a Note)



B. Click on the three dots in the top right >Create Folder

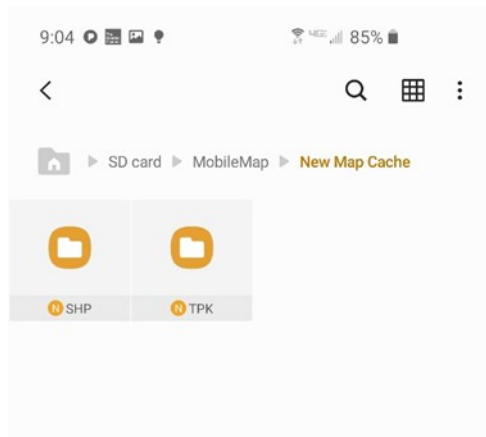


C. Name the new map cache whatever you want to call it



**2. Add the sub folders for TPK and SHP**

- A. Open your new map cache folder.
- B. Follow instructions 1b and 1c to create 2 subfolders named “TPK” and “SHP”

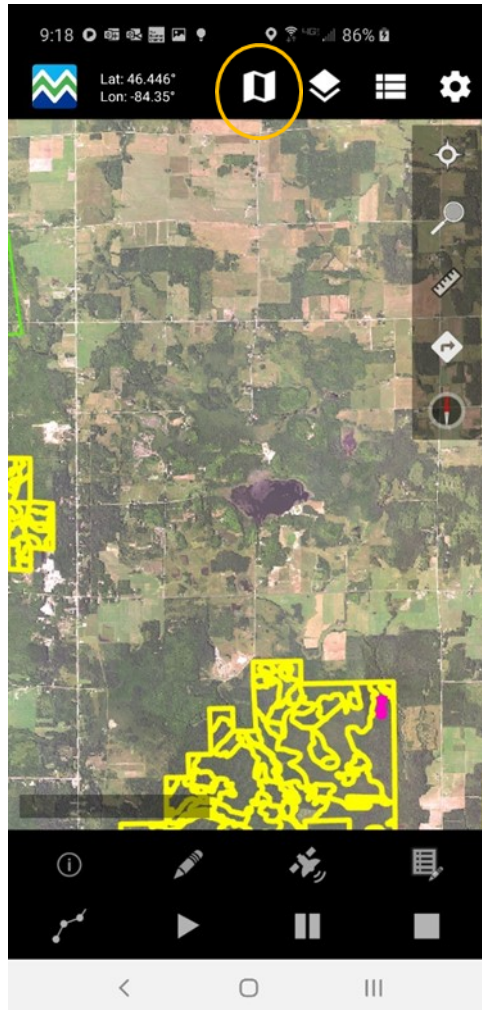


**3. The file structure for your new map cache is now created. You can add TPK files and shapefiles into their appropriate folders.**

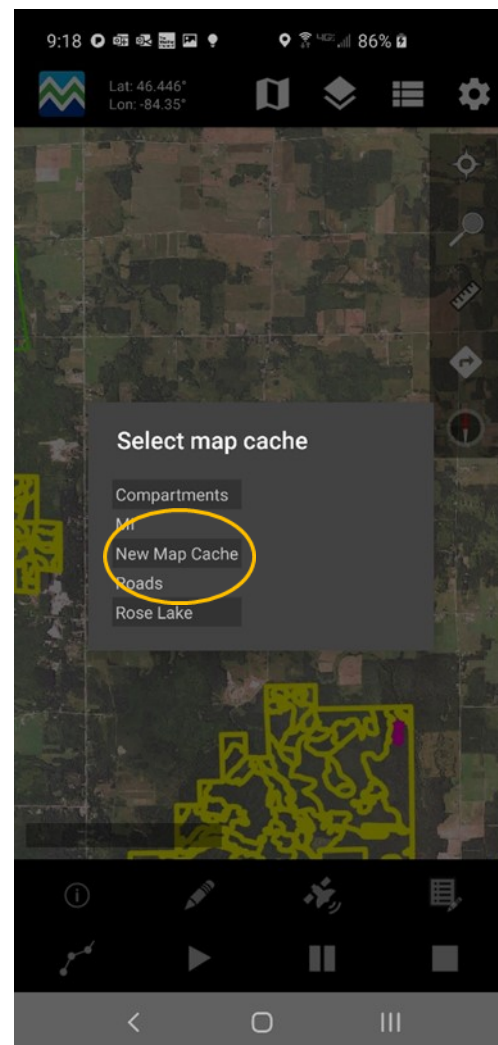
#### 4. Select a map cache in MobileMap

A. Open MobileMap (if it was already open close the app and restart it)

B. Click on the map cache button



C. Select the map cache you created



D. The files in that cache along with the default TPK will now be displayed and show up on the layer list.