

**Open for Public Hunting**  
**Hunting Access Program**

Hunt types and seasons may vary.  
 Details available at the Farm Headquarters.  
[www.michigan.gov/hap](http://www.michigan.gov/hap)

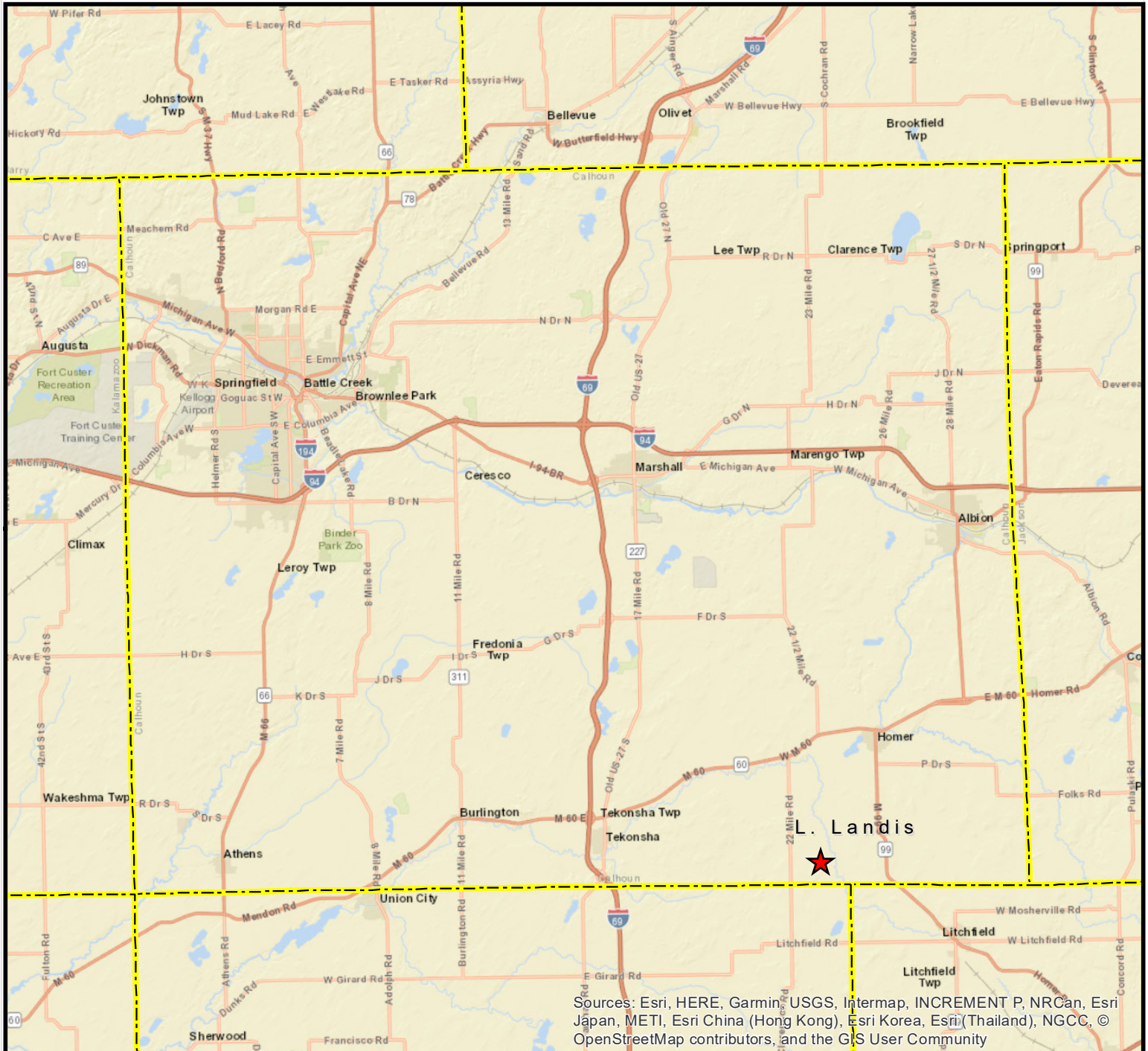


STATE OF MICHIGAN - DEPARTMENT OF NATURAL RESOURCES  
**HUNTING ACCESS PROGRAM (HAP)**



# Calhoun County HAP Cooperator Properties

Revised  
 09/14/2018



**Legend:** █ Property Boundary  
 ★ Station &/or Parking Location



For more information on the Hunting Access Program (HAP), more maps, or details on other areas, visit the DNR website HAP section [www.michigan.gov/hap](http://www.michigan.gov/hap) or scan this QR-block (on the left) with your smartphone or similar device.

**HUNTER SAFETY ZONES of 150 yards or 450 feet are enforced at ALL TIMES around all buildings and structures.**  
**Be aware of all property boundaries; Do not trespass onto adjacent lands.**