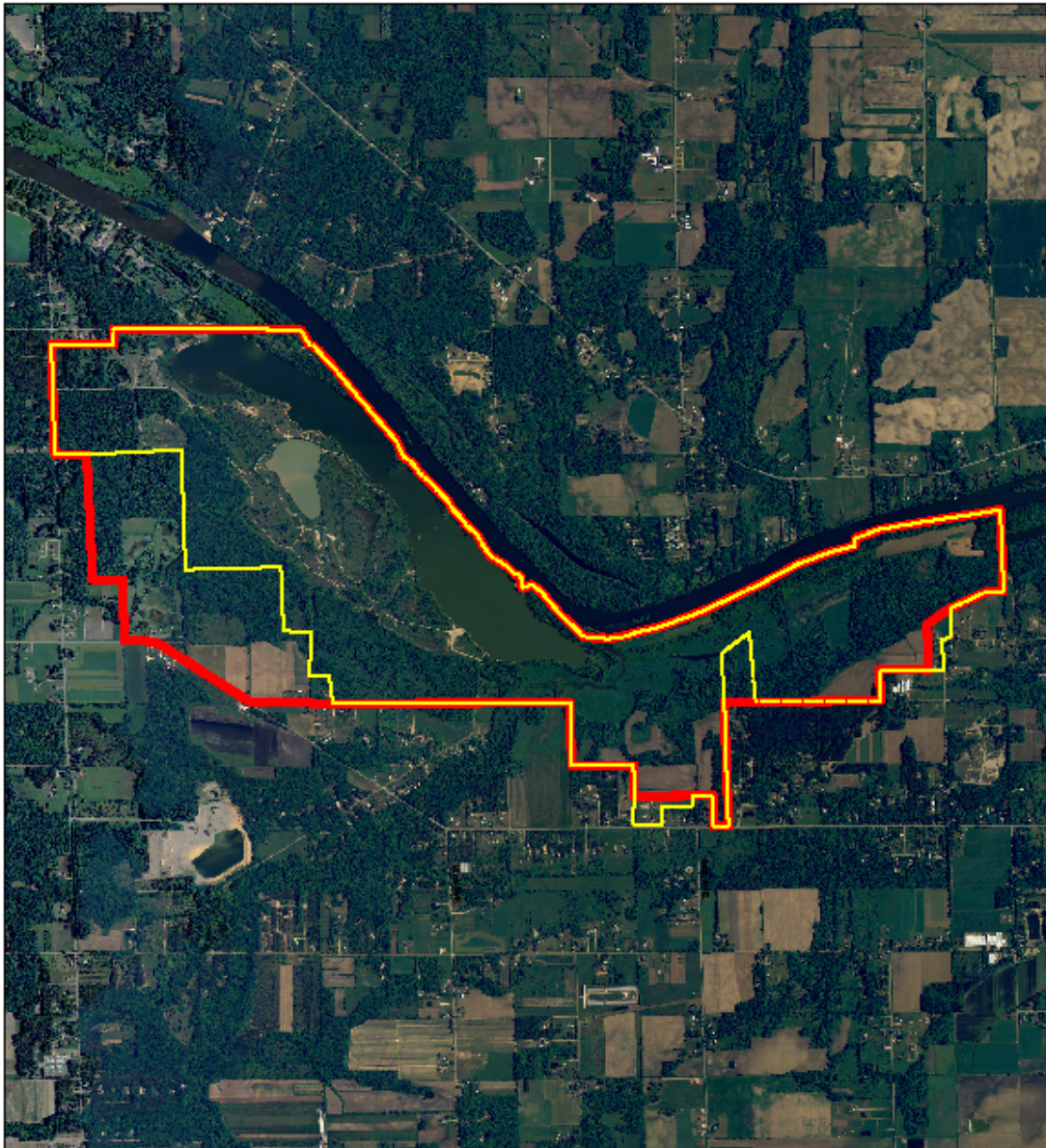




Bass River Recreation Area



Base Features

-  Bass River RA
-  NRC Dedicated Boundary (2004)

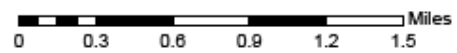


TABLE OF CONTENTS

<u>SECTION</u>	<u>PAGES</u>
Executive Summary	6-9
Introduction	10-11
Planning Process Overview	
Planning Objectives	
Planning Team	12
CoreValues	13-18
DNRE / RD Mission	
Park Identity	
- Park Purpose	
- Park Significance	
Legal Mandates	
Management Zone Plan	19-30
Primitive Zone	
Natural Resource Recreation Zone	
Scenic Zone	
Future Plan Inserts (List)	31
10-Year Action Plan (LONG-RANGE ACTION GOALS TO ATTAIN GMP)	(INSERT)
5-Year Action Plan (SPECIFIC ACTIONS TO IMPLEMENT)	(INSERT)
Annual Action Plan and Progress Report	(INSERT)
Operational / Management Resources.....	(INSERT)
- Annual Work Plan (NOTE...this should tie-in with Phase 4 – Annual Report of Management Planning)	
- Staffing plan	
- Budget plan	
- Equipment inventory and needs	
- Training (required and desired)	
- Public relations / marketing / outreach	
- Programming (special events, MCCC activities, volunteers, etc.)	
- Public health, safety and welfare	
- Water system	
- Wastewater system	
- Electrical system	
- Law enforcement	

- Emergency access plans
- Wildfire management plan
- Dam Safety reports
- CRS
- FOIA
- [Raster Image Index](#)
- [Raster Images of historic park plans](#)
- Park Infrastructure data
- Parcel mapping of land ownership
- Other...

Supporting Analysis..... 32-46

Park Setting

- Location and surrounding community
- Demographics
- General history of park
- Land ownership and issues
- Relationship to other park resources
- Current land use

Natural Resources

- Geology and Ecoregional context
- Water resources
- Climate
- Soils
- Flora
- Fauna

Historic / Cultural Resources

- Physical environment
- Cultural environment
- Archaeological resources
- Buildings and structures
- Historic landscape

Education / Interpretation / Visitor Services Resources

- LAPS 'Kids in Park'
- Interpretive programming, displays, and signage
- Volunteer programs

Recreational Resources

- Developed opportunities
- Areas of conflict

Park Use Statistics and Economic Impacts

- 2004 use statistics
- 2004 economic impact analysis

Stakeholder Input

- DNRE programs
- Federal programs
- Local agency programs
- Other state agencies
- Private sector (business)
- Sporting clubs
- Special interests
- Public

Planning Overview..... —

Meetings
Plan Reviews

Appendix 43

Wildlife Division Co-Management MOU
Ottawa County Parks and Recreation Commission Lease

EXECUTIVE SUMMARY

Long-range planning for Bass River Recreation Area began in September of 2006. “Management Planning” focuses on the four tenants of our Mission Statement which lead us to thoroughly inventory the (1) natural resource values of the park, establish its (2) historic/cultural resources, identify the (3) recreational opportunities and explore the (4) educational and interpretation opportunities.

With this base of knowledge and with input from the “Planning Team” (made up of Department Resource Staff and Ottawa County Representatives), we established an ‘identity’ for the park. The key significance of Bass River Recreation Area (Bass River RA) is the following:

Bass River RA was acquired from Waste Management Inc. in 1994 for outdoor recreation purposes and was assigned to Recreation Division (RD) to administer as a State Recreation Area. At that time, Waste Management Inc. was obligated to offer this property, 1,115 acres, “as first right of refusal” to the State of Michigan due to local opposition to the proposed planned use and subsequent court action involving Ottawa County. In 2002, 550 acres (Bakale Tract) were added to the Recreation Area for the purposes of wetland management, outdoor education, and wildlife-related activities. While the entire 1,665 acres are designated as Bass River RA, and managed by Recreation Division, the Bakale Tract (550 acres) is co-managed by Wildlife Division.

It was also recognized that Bass River RA was situated close to areas of high population density and that there was a strong demand for local and statewide recreational needs.



Prairie Area



Max Lake

In concert with analysis of the park’s purpose and significance, the Planning Team established the appropriate Management Zones and their extent of influence on the park. From a pallet of nine standard zones, we utilized three of these zones for Bass River RA. The Management Zone Plan is found on the

cover of this document and a thorough review of all zones is found within. A condensed review of those zones applied at Bass River RA is as follows:

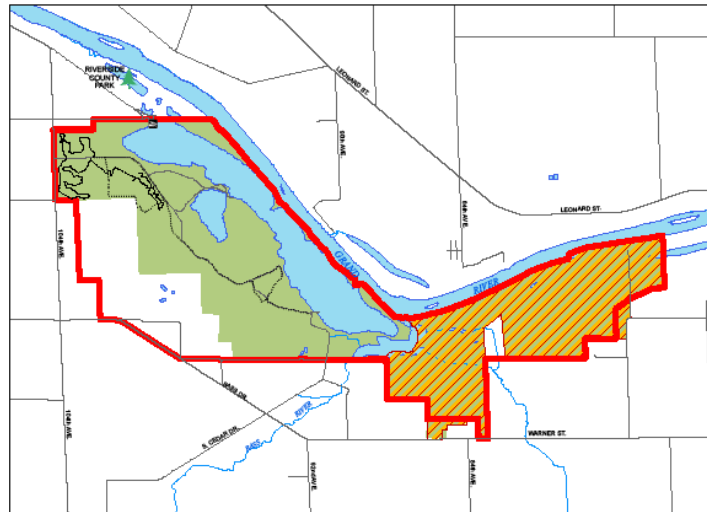
- Primitive Zone.** This zone takes up 830 acres of the park. Wildlife Division actively co-manages the easterly part of the park (Bakale Tract) where the natural resources are of higher quality and no mining activities took place. The majority of this zone is within the Grand River floodplain.



Lost Lake

A mixture of northern hardwoods and scattered conifers make up the small amount of forest cover. This area also contains a diverse wildlife habitat. Nearly 1 ¾ miles of water frontage exists along the Grand River and nearly 2,400 feet of water frontage along the Bass River.

Bakale Tract



Base Features

- Bass River RA
- NRC Dedicated Boundary (2004)
- Bakale Tract



0 0.3 0.6 0.9 1.2 1.5 Miles

- Natural Resource Recreation Zone.** The natural resources recreation zone comprises 835 acres of the park. This zone includes park land both inside and outside of the Grand River flood plain, Max Lake (man-made from previous land owner) , and Buddy's Pond. This zone is utilized for

general recreation, including hunting, fishing, trapping, birding, and trail use for hiking, biking, equestrian, and cross-country skiing. The majority of the trails exist within this zone.

Trail usage is popular in the west portion of the park. The major trail users include the Michigan Mountain Biking Association (MMBA) and the Ottawa County Equestrian Trail Riders. These groups play an active role in using and maintaining the six mile trail.



Equestrian trail user

This zone also takes in some areas that were mined by a former owner, Construction Aggregates. In years past, this area was extensively mined for gravel. A clay cell/waste disposal system, that was never implemented, still exists on the west side of the park. This zone offers a wide range of opportunities for long range planning, from developed recreation to natural resources restoration (to reflect pre-settlement times).



Wakeboarder on Max Lake

- **Scenic Zone.** This zone recognizes the viewing opportunities along the Grand River, Buddy's Pond, Max Lake, and views originating from the end of Cedar Drive/Sleeper Street. Within the Grand River exists a dredged channel from Grand Haven and ending approximately 700 feet from the opening of Max Lake. The channel is navigable by boats of approximately 40' length.



View of Max Lake from Cedar Drive

INTRODUCTION

Planning Process Overview - The management planning process develops a series of planning steps, each built upon the previous, that keep all planning and action decisions focused on (1) the mission of the Parks and Recreation Division, and (2) the specific Purpose and Significance of the park.

There are four phases of planning, implemented in the following order:

- **Phase 1** - General Management Plan (GMP) - Long-range (20 yr) goals
- **Phase 2** – Long-range Action Goals Plan - long range (10 yr) goals to attain the GMP (requires review of Phase 1)
- **Phase 3** - 5-Year Implementation Plan – specific actions to implement (requires review of Phase 1 and Phase 2)
- **Phase 4** - Annual Action Plan and Progress Report – what will be done this year and what progress was made on last year’s plan

The **General Management Plan** is the first step in our planning process. In this phase of planning, we are defining what the park will look like in twenty years. What will be the condition of flora and fauna? How will we address historic and cultural resources? What recreational opportunities will be provided? What education and interpretation efforts will meet the visitor? What will guide the manager’s operational decisions? What will be the visitor’s overall experience?

A key tool of this plan is the identification of “Management Zones” which define specific characteristics of the land, addressing management for:

- Natural features
- Historic/cultural features
- Education/interpretation
- Recreational opportunities

These four elements represent the primary goals of the RD Mission Statement, and provide guidance for both planning and management decisions. Within the parameters of this guidance, “Purpose” and “Significance” statements are developed for the park that establishes its unique identity and focus. No two parks are the same and this emphasis is directed at ensuring that the differences found from park to park are acknowledged, highlighted and celebrated.

Planning Objectives

The objective of this General Management Plan is to bring together Department staff, impacted and impacting stakeholders, and the public who use the park in a planning process that will define and clarify the unique “Purpose” and “Significance” of Bass River RA. Collectively, we will reinforce those attributes in the planning and management decisions that impact the park through the

implementation of the Management Zone Plan. Future action plans, whether focused on a development proposal, a resource improvement initiative, an interpretive program, or day-to-day management of the park will be guided by this Management Zone Plan.

PLANNING TEAM

Accomplishment of our planning objectives was and is dependent upon the valuable input provided by all members of the 'Planning Team'. The following persons were participants in this planning process:

<u>Name</u>	<u>Representing</u>
Joe Strach	DNRE-RD, District Planner
Paul Curtis	DNRE-RD, Management Plan Administrator
Roland Johnson	DNRE-RD, District Supervisor
Charles Ehrlich	DNRE-RD, Unit Manager
Dale Rau	DNRE-RD, Unit Supervisor
Ray Fahlsing	DNRE-RD, Stewardship Program Manager
Elizabeth Brockwell-Tillman	DNRE-OC, Interpreter
Jay Wesley	DNRE-FD, Supervisor
Kregg Smith	DNRE-FD, Fisheries Biologist
Kim Dufresne	DNRE-FMD, Supervisor
Michael Pine	DNRE-FMD, Fire Marshall
Nik Kalejs	DNRE-WD, Wildlife Biologist
Scott Lambert	DNRE-RD, Student Planning Assistant
Jeff Johnson	DNRE-RD, Student Planning Assistant
John Scholtz	Ottawa County Parks
Curt TerHarr	Ottawa County Parks

CORE VALUES

Guidance for the Management Zone Plan stems from the Mission Statements of the Department and the Division, and the Purpose and Significance Statements that have evolved through the planning process. The core values found in these statements must be reflected in this long-range Management Zone Plan for Bass River Recreation Area and subsequently reflected in any shorter range action plans:

DNRE Mission Statement

"The Department of Natural Resources and Environment is committed to the conservation, protection, management, and accessible use and enjoyment of the state's environment, natural resources, and related economic interests for current and future generations."

RD Mission Statement

"The Recreation Division's Mission is to acquire, protect, and preserve the natural and cultural features of Michigan's unique resources, and to provide access to land and water based public recreation and educational opportunities."

The core values derived from these statements are that RD will acquire, preserve and protect; (1) natural resources, (2) cultural resources, (3) provide public recreation, and (4) provide educational opportunities.

Park Purpose

Park purpose statements are based on park legislation, legislative history, special designations and DNRE policies. These statements reaffirm the reasons for which Bass River Recreation Area was identified as part of the State Park system.

- The westerly portion (1,115 Acres) of Bass River RA was established in 1994 as an acquisition from the Waste Management, Inc. At that time, Waste Management Inc. was obligated to offer this property "as first right of refusal" to the State of Michigan due to local opposition to the proposed planned use as a landfill and subsequent court action involving Ottawa County. It was recognized that Bass River RA was located close to areas of high population density and that there was a strong demand for outdoor recreation.
- The easterly portion (550 Acres) of Bass River RA, located east of Bass River, was acquired in 2002 for the purposes of wetland management, outdoor education, and wildlife-related activities. The funding sources came from Michigan Natural Resources Trust Fund, Ducks Unlimited, Inc.,

Michigan Duck Hunters Association, and Macatawa Bay Waterfowl Association. This tract is co-managed by Recreation and Wildlife Divisions.

- To preserve and protect the park's unique natural resources for current and future generations.
- To preserve and protect the park's historic/cultural resources.
- To provide opportunities for recreational uses and experiences in an area lacking in same, that are compatible with the park's resource(s) base.
- To provide educational and interpretive opportunities for the public that reflect the mission of the DNRE and the unique qualities of Bass River Recreation Area.

Park Significance

Park significance statements capture the essence of the park's importance to carry out the core values of our RD Mission. They recognize the natural and cultural heritage values of the park and the recreational and educational opportunities afforded. These statements describe the distinctiveness of Bass River Recreation Area. Understanding these distinctions help managers make decisions that preserve those special resources and values necessary to accomplish the park's purposes.

- Bass River RA, located on the Grand River in Ottawa County, provides inclusive open space in an area lacking in public lands. Roughly 500 acres in the westerly portion of the park was extensively mined for gravel by a former owner, Construction Aggregates. The easterly portion of the park was largely undeveloped and provides productive wildlife habitat.
- Bass River RA has over 3 ¼ miles of water frontage along the Grand River and over ¾ of a mile of water frontage along the Bass River. In addition, the park has a man-made 300 acre lake, Max Lake, attached to the Grand River, Lost Lake (within the Bakale Tract) is roughly 3 acres, and Buddy's Pond is roughly 40 acres. The water access provides a variety of water-based recreational opportunities.
- Bass River RA's 1,665 acres located along the Grand River contributes to a county-wide Grand River Greenway, which preserves open green space consisting of expansive floodplain, wetlands and marshes, and large tracts of forested land.

- Trail usage is a large component of the park. Bass River is a popular year-round destination for mountain bikers, equestrians, cross country skiing, and hikers.
- Bass River RA provides hunting, fishing and wildlife viewing opportunities unique to southwest Michigan. Seasonal birds use the Grand River for orientation during migratory flight. Wildlife Division actively manages the eastern portion of the park to promote wildlife and hunting opportunities.
- It is core that a good partnership with Ottawa county parks is maintained. Both organizations have investments in Bass River and should apprise each other of preservation and development activities.

Legal Mandates

For all park Management Zone Plans, all legal mandates will be identified and will serve to further guide the development of the General Management Plan and subsequent Action Plans. For our planning purposes, the term “Legal Mandates” refers to not only state law, but also the administrative tools of “Policy” and “Directive” of the Natural Resource Commission, the Department, and Parks and Recreation Division. Specific to Bass River RA, the following legal mandates have been identified:

- PA 451 OF 1994, PART 741 - STATE PARK SYSTEM - NATURAL RESOURCE AND ENVIRONMENTAL PROTECTION ACT - This act is the recodification of law that established the Michigan State Park System and defined the powers and duties of same. Notable in this law is Section 324.74102 which identifies the duties of the department and reinforces those core values cited above.

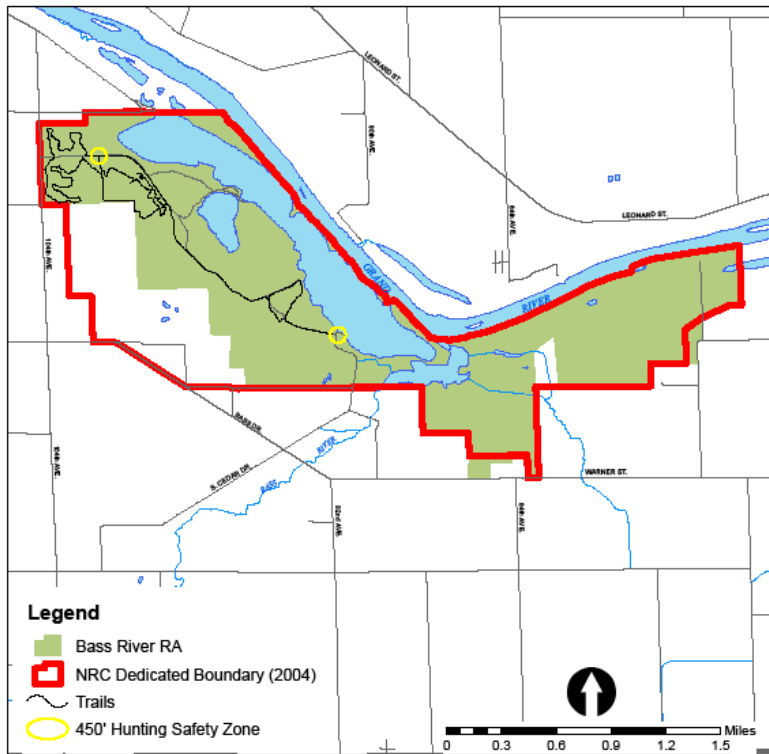
This section reads:

- (1) “The legislature finds:
 - (a) Michigan State Parks preserve and protect Michigan’s significant natural and historic resources.
 - (b) Michigan State Parks are appropriate and uniquely suited to provide opportunities to learn about protection and management of Michigan’s natural resources.
 - (c) Michigan State Parks are an important component of Michigan’s tourism industry and vital to local economies.
- (2) The department shall create, maintain, operate, promote, and make available for public use and enjoyment a system of state parks to preserve and protect Michigan’s significant natural resources and areas of natural beauty or historic significance, to provide open

space for public recreation, and to provide an opportunity to understand Michigan’s natural resources and need to protect and manage those resources.”

- Act 108, PUBLIC ACTS OF 1987 AND ACT 304, PUBLIC ACTS OF 1988 FOR THE PURCHASE OF BASS RIVER RECREATION AREA – In 1994, Bass River RA (westerly tract) was purchased with funds from the Michigan Natural Resources Trust Fund.
- PA 451 OF 1994, NATURAL RESOURCES AND ENVIRONMENTAL PROTECTION ACT (EXCERPT) – 324.41901 Regulation and prohibitions in certain areas; powers of department; area closures; hearings, investigations, studies, and statement of facts; regulations. – This part of PA 451 establishes the powers of the Department to establish safety zones for hunting. In accordance with the Administrative Rules established by Wildlife Division for hunting safety, a 450’ “Safety Zone” is established around all occupied dwellings (which includes campgrounds). Under the State Land Rules, the Department also has the authority to expand the application of this 450’ “Safety Zone” to encompass “Day-Use Areas” such as beaches, picnic areas, boat launches, and parking areas, should the need arise. This is determined on a case-by-case basis. At Bass River RA, the Hunting Safety Zones are represented below:

Hunting Safety Zones

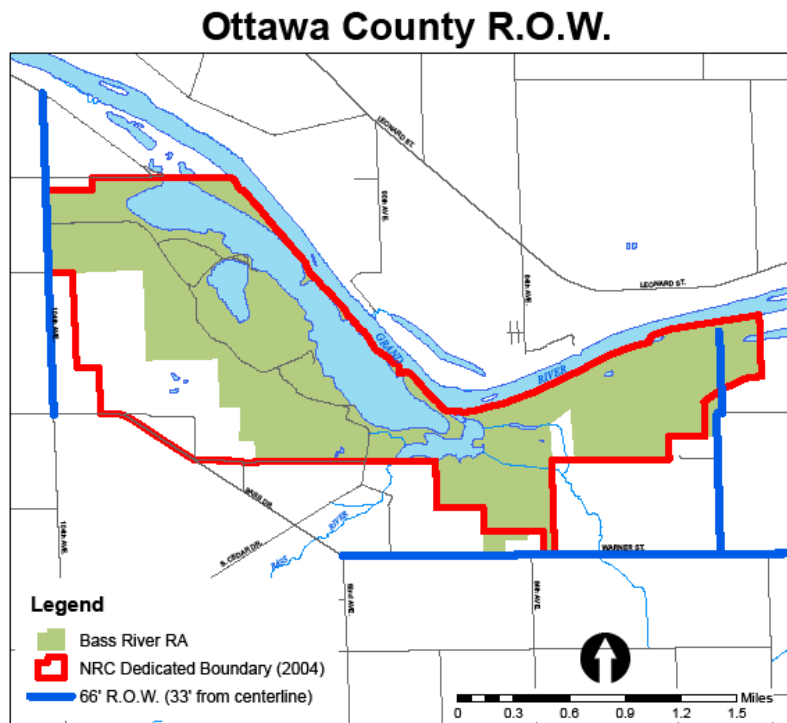


- LAND USE ORDERS OF THE DIRECTOR - By authority conferred on the Director of the Department of Natural Resources by Section 504 of Act No. 451 of the Public Acts of 1994, as amended, being section 324.504 of the Michigan Compiled Laws and in accordance with R 299.671 and R 299.922 of the Michigan Administrative Code, the Director of the Department of Natural Resources orders that the following order of the Land Use Orders of the Director shall read as follows:

5.2 Possession or consumption of alcoholic beverages in certain state parks and recreation areas, prohibited conduct. A person shall not do any of the following:

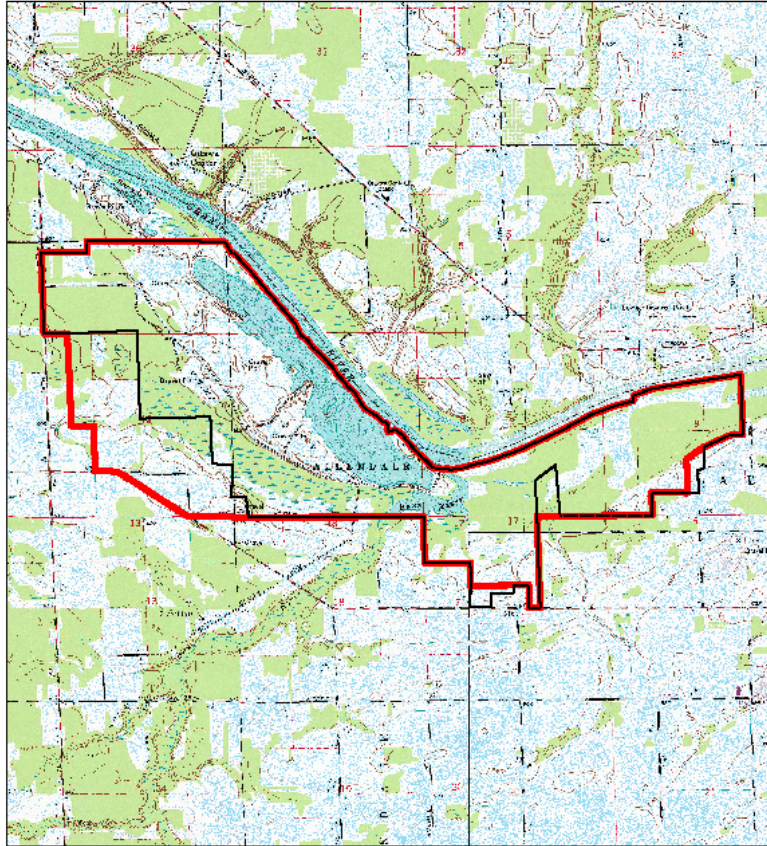
(a) Bass River – Entire Park

- R.O.W. FOR COUNTY ROADS – The Right-of-Way for 104th Avenue, Warner Street, and 72nd Avenue is 66' wide (33' from center line), which are the only county roads impacting Bass River RA. The Ottawa County Road Commission has the authority to require permits for any impacts to their ROW (ie. crossings or new drives).





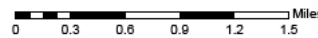
- The Natural Resource Commission has approved a recommended boundary change for the park that includes additional land to the west and east ends of the park.

2004 NRC Dedicated Boundary



Base Features

-  Bass River RA
-  NRC Dedicated Boundary (2004)



The long range goal of this plan is to acquire new land designated in the map above. The Planning Team reviewed this new boundary designation, agreed with the designations, and offered no changes.

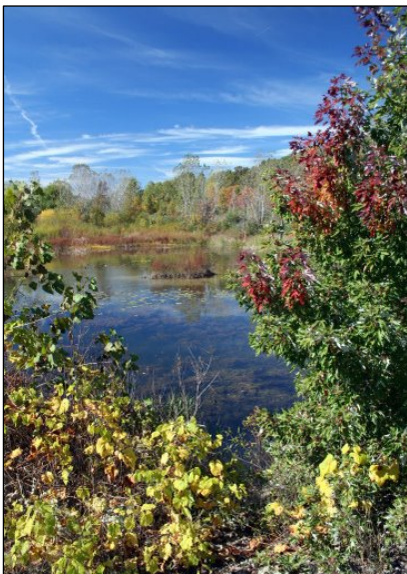
- WILDLIFE DIVISION CO-MANAGEMENT MOU – The Bakale Tract (550 acre easterly portion of Bass River RA) is managed by Wildlife Division. Co-management requirements are documented in this MOU. (see Appendix)
- OTTAWA COUNTY PARKS AND RECREATION COMMISSION LEASE – A portion of Bass River RA is leased to Ottawa County to compliment Riverside Park, which adjoins the RA at the west end. (see Appendix)

MANAGEMENT ZONE PLAN

With the guidance of the Bass River RA Planning Team (made up of Department resource staff and Ottawa County Park representatives), the park “Purpose and Significance” statements were drafted and adopted. These statements established an identity for the park, to include the following: The westerly portion of the park was established in 1994. It was recognized that the park was located close to areas of high population density and that there was a strong demand for outdoor recreation. The easterly portion of the park was acquired in 2002 for the purposes of wetland management, outdoor education, and wildlife activities.



Waterfowl

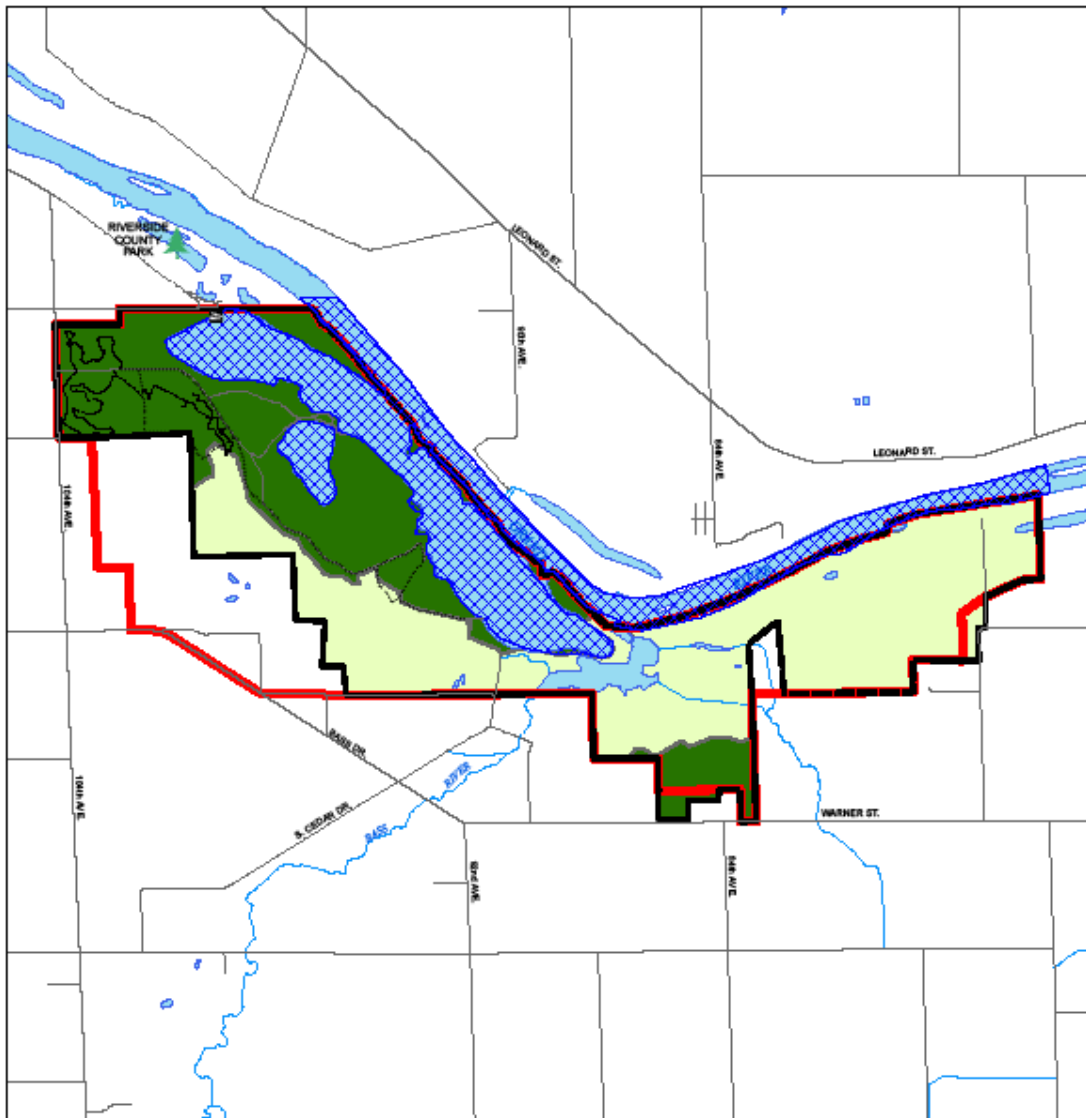


Lost Lake



In addition, Bass River RA provides a variety of water-bases resources with recreational opportunities, contains over 3 ¼ miles of water frontage along the Grand River that contributes to a county-wide Grand River greenway, and has a large portion of parkland within the Grand River floodplain.

Based on this ‘identity’ for the park, a Management Zone Plan” was subsequently drafted and adopted with Planning Team support. The Management Zone Definitions apply to each zone used, with special considerations highlighted in the descriptive narratives of management guidance for each zone of the park.




Management Zone Plan

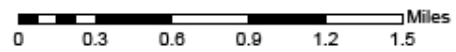


Base Features

-  Bass River RA
-  NRC Dedicated Boundary (2004)

PRD Management Zones

-  Scenic
-  Natural Resource Recreation
-  Primitive



It is not uncommon for large portions of this 830 acre zone, which is located within the Grand River floodplain, to be flooded by seasonal rains. The soils within this area are predominately lacustrine sand and gravel silts. This hydrology varies from emergent wetland to forested wetland to open water. Wetland plants, such as cat-tail, bulrush, spike rush, arrowhead, and water lily can be found in emergent wetlands. The terrain is generally made up of mixed deciduous forest and woody wetlands. Limited areas managed by Wildlife Division are utilized for share cropping and prairie/warm season grasses. The previous land owner channeled portions of the land in order to manipulate the water levels on portions of former agricultural land. The Primitive Zone designation allows for only dispersed and low frequency use, such as foot traffic. No mountain bike or equestrian uses will be permitted.

Although MNFI has not performed a natural features inventory at Bass River RA, Ottawa County had a county-wide inventory completed. Many threatened, endangered, and special concern species, such as the Bald Eagle and Cooper's Hawk, can be expected to be found at Bass River RA.

Following are the prescribed qualities for the Primitive Zone:

- **Natural Resources.** Maintain and restore high-quality floodplain forest, which is characterized by nutrient rich wet soils. The importance of this floodplain forest acts as a buffer to keep excess sediments and nutrients from entering the Grand River and Bass River. The Stewardship Unit will provide guidance.

This zone will reflect natural processes, with vegetative management only allowed to address hazard trees, invasive species, and pests and disease.

- **Historic/Cultural Resources.** No known historic sites or cultural resources exist in the emergent marshes or floodplain. Since the eastern portion of the park was never mined, there is a probability that this area contains cultural resources from Native Americans.
- **Recreational Opportunities.** With the focus of this zone to maintain and restore the high-quality floodplain forest, and to protect the aquatic and emergent marsh environment, only low impact recreation (dispersed recreation such as hunting, trapping, birding, and fishing) will be allowed in this zone. Wildlife Division actively manages the eastern portion of the park to promote wildlife opportunities. No hiking, equestrian or mountain biking trails will be allowed.

The existing unimproved boating access site from the south will remain open for vehicle traffic across this zone.

- **Education Opportunities.** The ecological significance of the southern floodplain forest, and the habitat that supports the rare aquatic and emergent marsh species, provides excellent educational opportunities. Educational kiosks at trail heads and off-site educational materials could be developed. Specific planning recommendations for education and interpretation will require input from the Marketing, Education, and Technology Division and others.

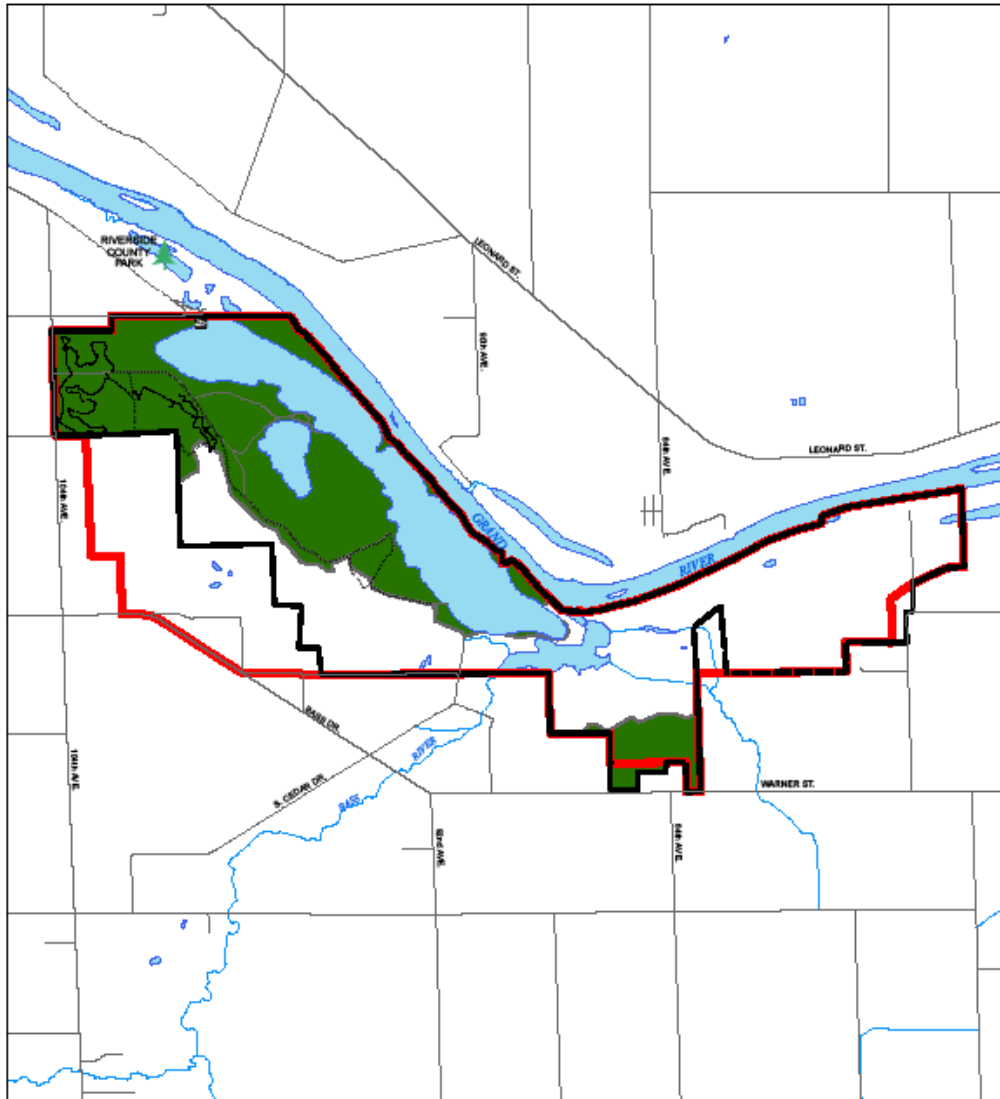
Wildlife Division has banded ducks in the past and an educational opportunity may exist with the public and volunteers. The variety of natural habitats and the potential for hunting makes Bass River RA a prime location for future educational opportunities.

- **Visitor Experience.** These areas will reflect a 'natural' feel, a significant sense of solitude, and a lack of man-made improvements.
- **Management Focus.** Management of this zone will be focused on maintaining the low-impact character of these areas with an emphasis on natural resource and habitat quality.
- **Development.** Only trail improvements (can include boardwalks and/or overlooks) and educational or interpretive signage will be the evidence of man-made elements in this zone. Any improvements needed for resource protection, such as erosion control, shall be 'natural' in character. The focus is to maintain as little evidence of human activity as possible. All development will meet the approval requirements of the planning process. The easterly 550 acres of Bass River RA was acquired with funding from Michigan Natural Resources Trust Fund, Ducks Unlimited, Inc., Michigan Duck Hunters Association, and Macatawa Bay Waterfowl Association. Any development within this easterly portion of the park should offer courtesy of approval from these groups and that of Wildlife Division.



NATURAL RESOURCE RECREATION ZONE (NRR)

The Natural Resource Recreation Zone is almost equal in size to the Primitive Zone with 835 acres comprising 50% of the park.


This zone is utilized for active recreation, including hunting, fishing, trapping, boating, birding, snowmobiling, and trail usage (biking, hiking, mushing, equestrian, cross-country skiing, etc.). There is still an emphasis on resource quality over recreation, but in this zone higher levels of use are allowed.

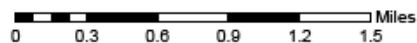


Base Features

-  Bass River RA
-  NRC Dedicated Boundary (2004)

PRD Management Zones

-  Natural Resource Recreation



The majority of this area was mined by a former land owner, Construction Aggregates. Max Lake, Buddy's Pond, and many smaller excavated areas were a direct result of mining activities within the Bass River RA. The mined areas have been stripped of topsoil and now only have a gravel surface. Because of the extensive mining that has occurred on site, this zone has a wide range of opportunities for long range planning, from more developed recreation to natural resources restoration to reflect pre-settlement times.

- **(NRR) Natural Resources.** In general, the natural resources can be modified to support visitor activities. Much of this zone has been mined for gravel. The mined portions of the park that are connected to the Grand River have formed Buddy's Pond and Max Lake.

Opportunities exist to work with Fisheries Division to establish a fish stocking program to increase fishing opportunities at Max Lake and Buddy's Pond.

An evergreen plantation exists near 104th street and along the western boarder of the park. The wooded area located in the westerly part of the park contains middle-aged oak, maple, ash, cherry, and popular.

This zone will reflect natural processes, with more proactive vegetative management only allowed to address hazard trees, invasive species, and pests and disease. Where appropriate, let areas go back to natural vegetation.

- **(NRR) Historic/Cultural Resources.** Although a good portion of this zone has been mined, any activity in this zone requiring earthwork must first be reviewed and approved by Stewardship Unit. There is good probability that there are cultural resources from Native American Indians along the Grand River.
- **(NRR) Recreation Opportunities.** This zone is utilized for general recreation. This zone includes: hunting, fishing, trapping, birding, snowmobiling, and trail use for hiking, cross-country skiing, and equestrian riding. Hunting is not allowed within 450' (Hunting Safety Zone) of the trail head, occupied dwellings and the boating access site.

A local water skiing club has signed a yearly lease in past years to water ski at Buddy's Pond. This doesn't give exclusive access to the club. Max Lake has an unimproved boat access site suitable for the launching of small boats.

RD has entered into a long term lease for co-management of the park. Ottawa County Parks and Recreation has expressed interest in managing the 'point' portion of the park adjacent to Riverside Park and to expand

their trail system along the river. With a potential long-term lease agreement between both parties, the management of this parcel would be mutually beneficial.

The main park road presently ends at the trail head (accessed from 104th Street) and the boat access site (accessed from South Cedar Drive). A special use permit is needed to use the middle portion of the park road, which is confusing to visitors. Ideally, this portion of the road would be opened up to provide through access from 104th Street to South Cedar Drive and improved.

- **(NRR) Education Opportunities.** Information regarding the cultural past can be made available at areas of congregation and fortified through educational opportunities. Informational kiosks are one good way to disseminate this information. A possible location for a signed kiosk would be at the trailhead located off of 104th Avenue and at the boat launch.

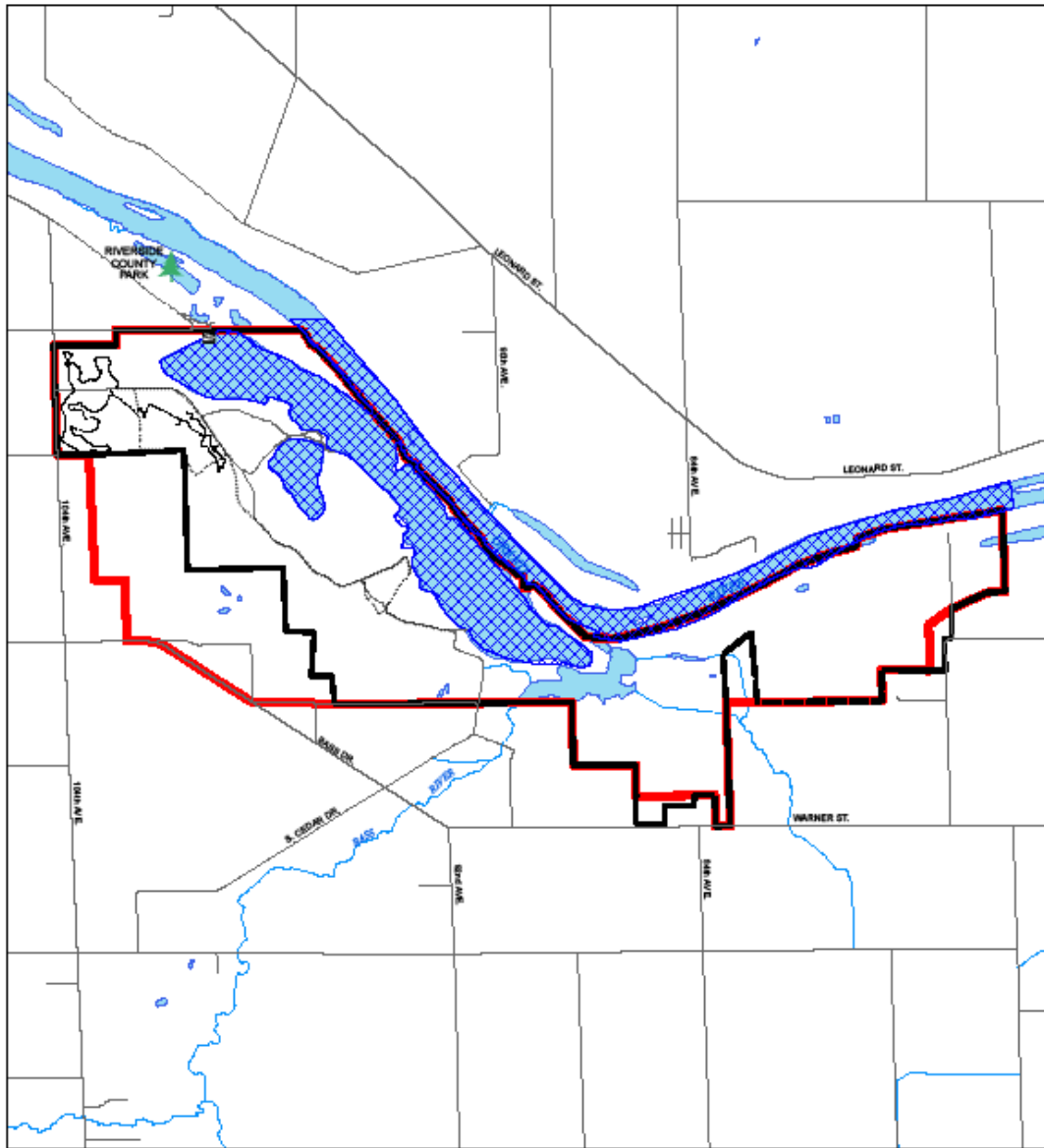
The majority of the parks trails exist within this zone. Efforts should be made to develop a trail map that shows designated biking / hiking / equestrian trails and abandon all unofficial trails.

- **(NRR) Visitor Experience.** The visitor can expect encounters with other park visitors during all four seasons. Hunting and fishing is popular and the multi-use trails cover the western area within the park.
- **(NRR) Management Focus.** The management focus in this zone is minimizing potential user conflicts and implementing educational efforts. Work well in conjunction with Ottawa county and local clubs to bring the recommendations to fruition.
- **(NRR) Development.** Development activity will focus on complementing the educational efforts to reduce user conflict. One example is installing guardrail (seek ORV grant) at certain areas to deter unwanted (and illegal) ORV usage. Many user created trails and old two tracks exist throughout the park. Designated trails should be inventoried and unwanted trails restored to original condition. Trails efforts should be coordinated through current user groups.



Develop seasonal access road to allow access from 104th to Buddies Pond to Warner St.

SCENIC ZONE (S)

This zone recognizes that there are aesthetic qualities to be preserved and protected in the park. The Scenic Zone incorporates the Grand River frontage of the park, Max Lake, Buddy's Pond, and the Bass River frontage of the park.

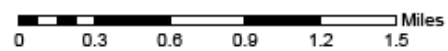


Base Features

-  Bass River RA
-  NRC Dedicated Boundary (2004)

PRD Management Zones

-  Scenic



The Grand River frontage is approximately 3 ¼ miles in length and over ¾ of a mile of water frontage along the Bass River. The park has a man-made 300 acre lake (Max Lake) attached to the Grand River, Lost Lake, and Buddy's Pond. Scenic views not only include views from the shore looking onto the water, but also views from the water looking onto the shoreline and beyond. A scenic overlook exists at the end of Cedar Drive.

- **(S) Natural Resources.** In general, the natural resources can be modified to support visitor activities. In addition, any modification must not hinder existing scenic opportunities.
- **(S) Historic/Cultural Resources.** Although a good portion of this zone has been mined, any activity in this zone requiring earthwork must first be reviewed and approved by Stewardship. There is good probability that there are cultural resources from Native American Indians along the Grand River.
- **(S) Recreation Opportunities.** An unimproved boating access site off of Max Lake provides for water access to the lake and the river. The river can either be viewed from the water looking onto the natural areas or views from the shore down to the water. For example, the end of Cedar Drive (elevated location) offers exceptional views looking down to the river and bayou. In addition, various viewing locations exist throughout the park.
- **(S) Education Opportunities.** There are great opportunities for interpretive signage along the trails, the trail head, and the boating access site (where people congregate).
- **(S) Visitor Experience.** Except for the end of Cedar Drive, the scenic view locations are in areas of low visitor impact to provide an experience of solitude. At the end of Cedar Drive, more contact with other visitors can be expected. From this location, views onto Max Lake will be maintained.
- **(S) Management Focus.** Management must focus on maintenance of the views and protection of the natural resource.
- **Development.** Any development in this zone must complement the viewing opportunities. Educational kiosks and improvements to augment educational opportunities are desirable actions. All development will meet the approval requirements of the planning process.

FUTURE PLAN INSERTS

10-Year Action Goals Plan (LONG-RANGE ACTION GOALS TO ATTAIN GMP) - Phase-2 of the Management Planning Process. Includes review and update of General Management Plan.

5-Year Implementation Plan (SPECIFIC ACTIONS TO IMPLEMENT) - Phase-3 of the Management Planning Process. Includes review and update of General Management Plan and Phase 2 Plan.

Annual Action Plan and Progress Report - Phase-4 of the Management Planning Process.

Operational/Management Resources - The following categories are established as a guide for the park manager to use to supplement this working document. Other categories can be added as needed.

- Annual Work Plan (NOTE...this should tie-in with Phase 4 – Annual Report of Management Planning)
- Staffing plan
- Budget plan
- Equipment inventory and needs
- Training (required and desired)
- Public relations / marketing / outreach
- Programming (special events, MCCC activities, volunteers, etc.)
- Public health, safety and welfare
 - Water system
 - Wastewater system
 - Electrical system
 - Law enforcement
 - Emergency access plans
 - Wildfire management plan
 - Dam Safety reports
- CRS
- FOIA
- Raster Image Index
- Raster Images of historic park plans
- Park Infrastructure data
- Parcel mapping of land ownership
- Other...