

Figure 54.—Locations for 79 dams and other water control structures within the Clinton River watershed. The top map shows the location of water control structures. Lakes having water level control structures with legally set water levels are shown in yellow. Black numbers indicate the legal level in feet above sea level. Red numbers indicate United States Geological Survey gauge stations.

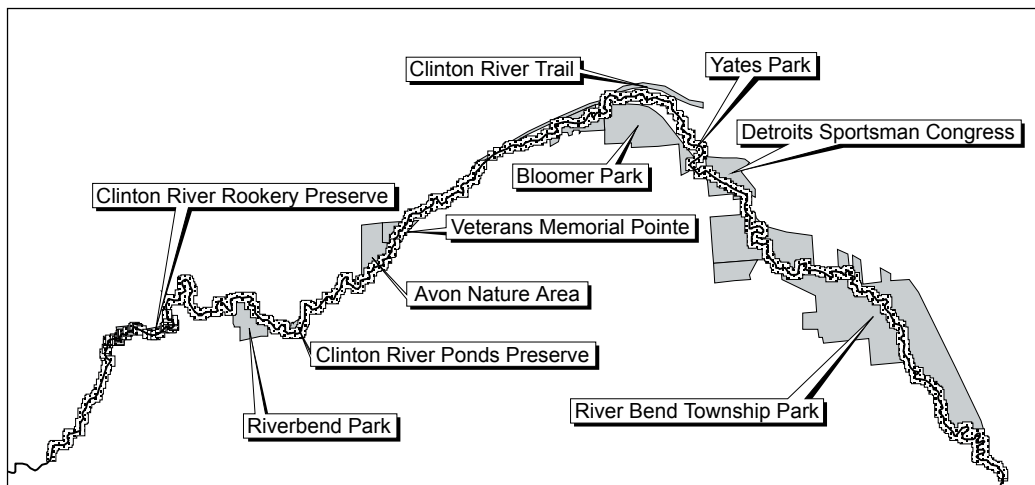


Figure 55.—Public lands (gray) located within Middle Segment of the Clinton River mainstem. This river segment is 19.1 miles long, 63% of which runs through public lands, and there are 1,628 acres of public land adjacent to the river. The Clinton River Watershed Council Recreation Guide, posted on their website at [HTTP://www.crowc.org/projects/recreation/recreation.html](http://www.crowc.org/projects/recreation/recreation.html), lists two canoeing segments in this section indicated by a light stippled buffer along the river. This website also has site-specific recreational descriptions of many of the public parcels along the river.

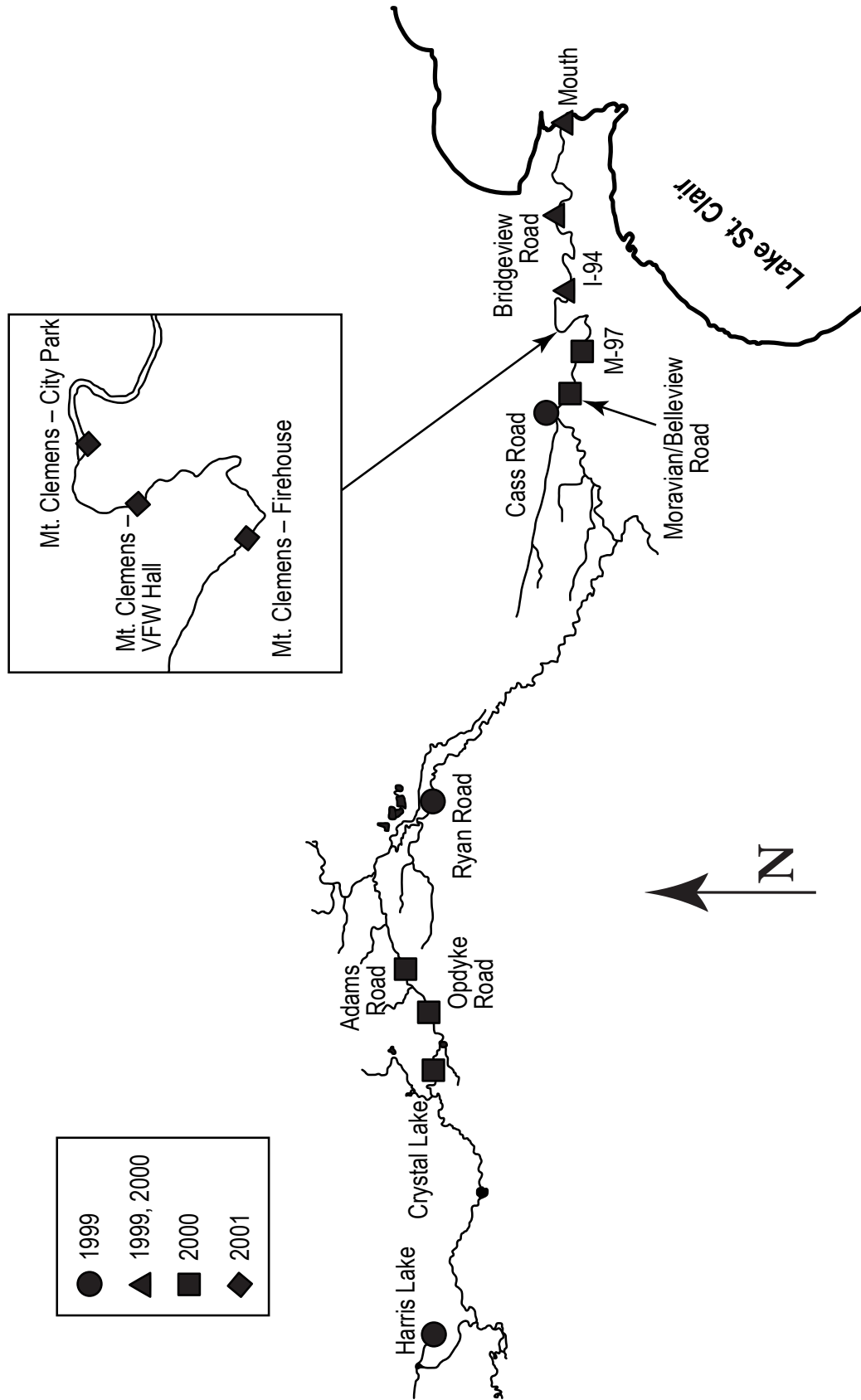


Figure 56.—Clinton River caged-fish monitoring locations. Data from Michigan Department of Environmental Quality 2003.

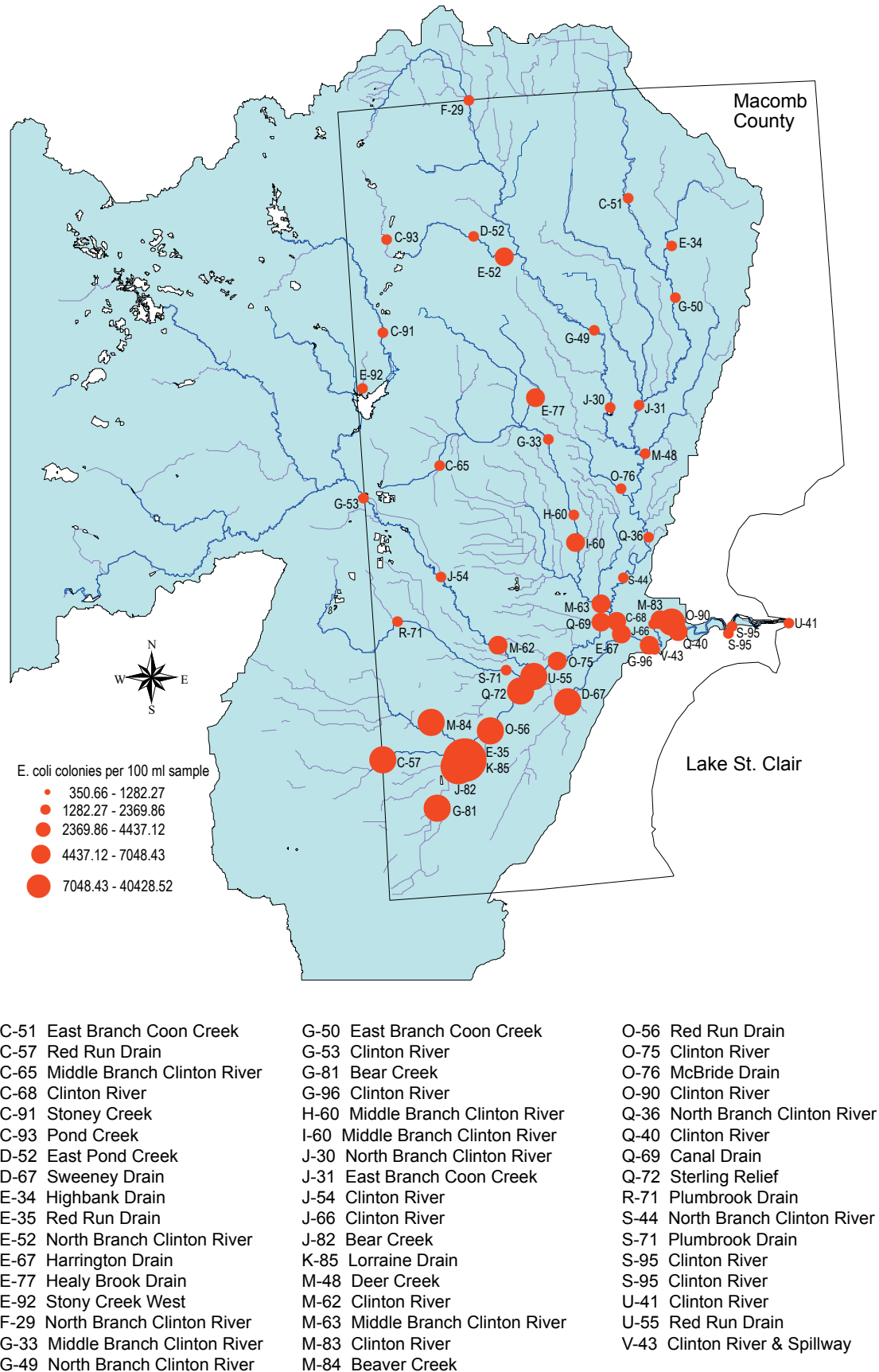


Figure 57.—Average bacteria load in the Clinton River, Macomb County, 1999–2003.

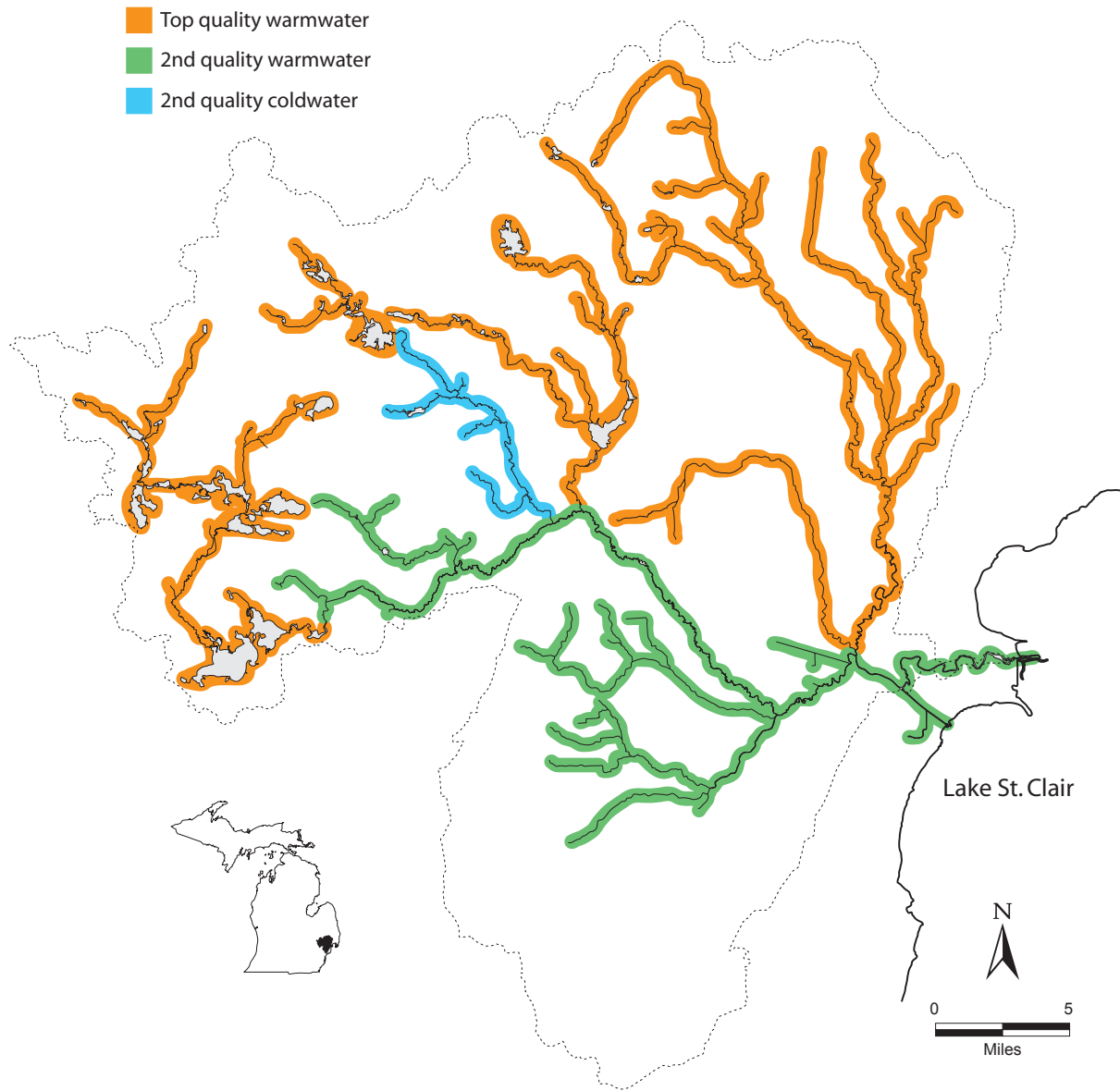


Figure 58.—Michigan Department of Natural Resources, Fisheries Division, stream classifications, 1967.

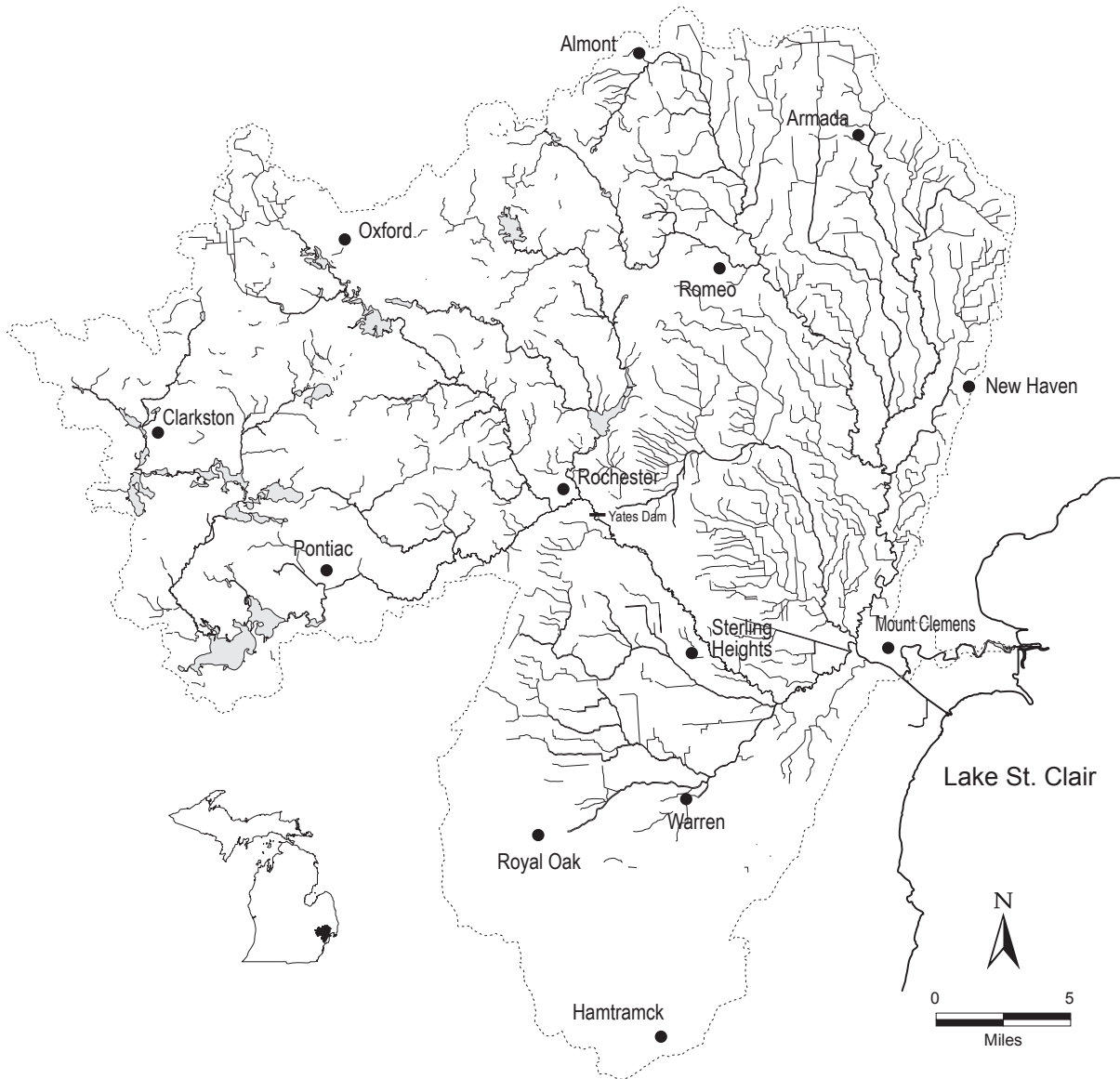
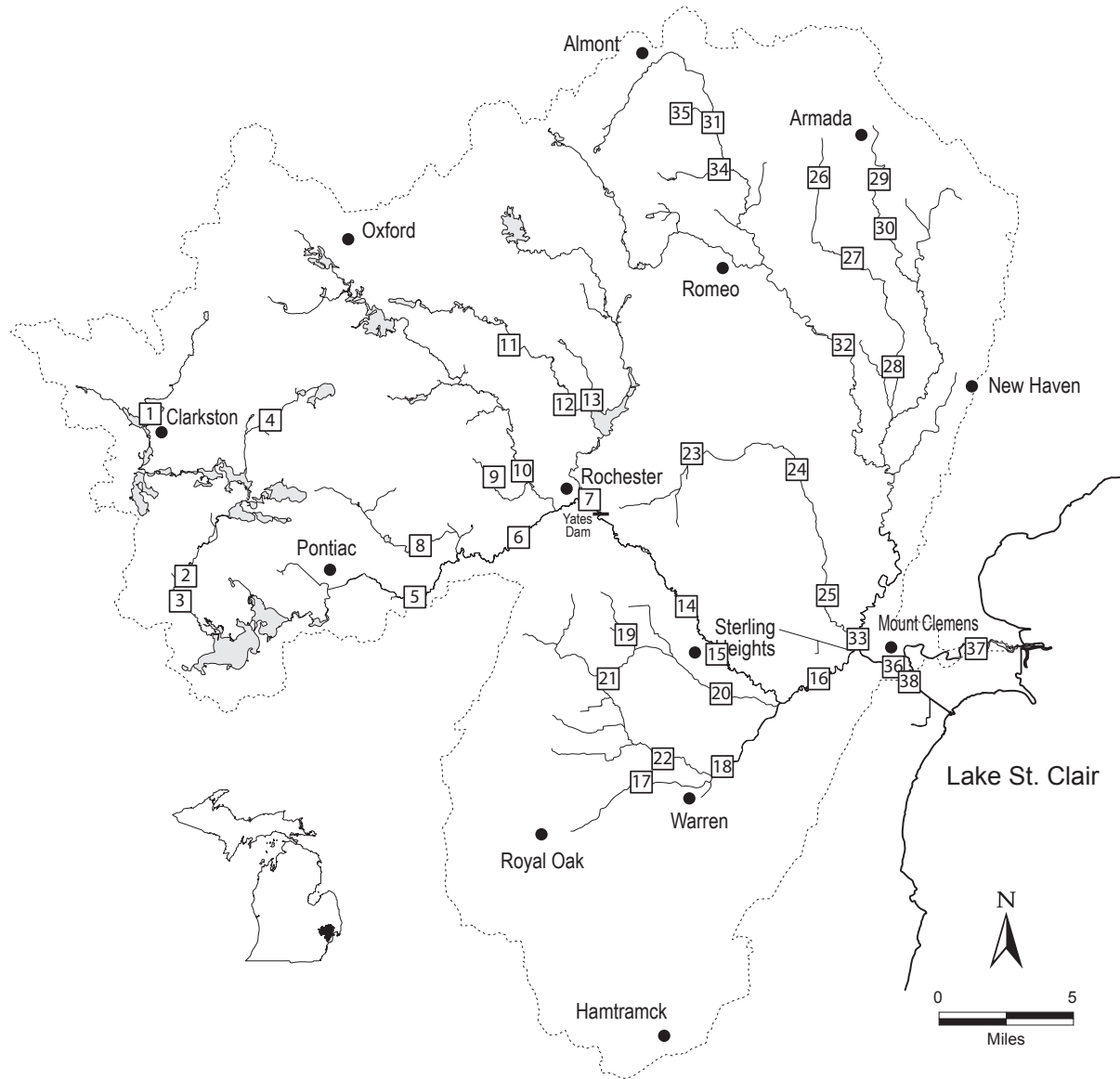


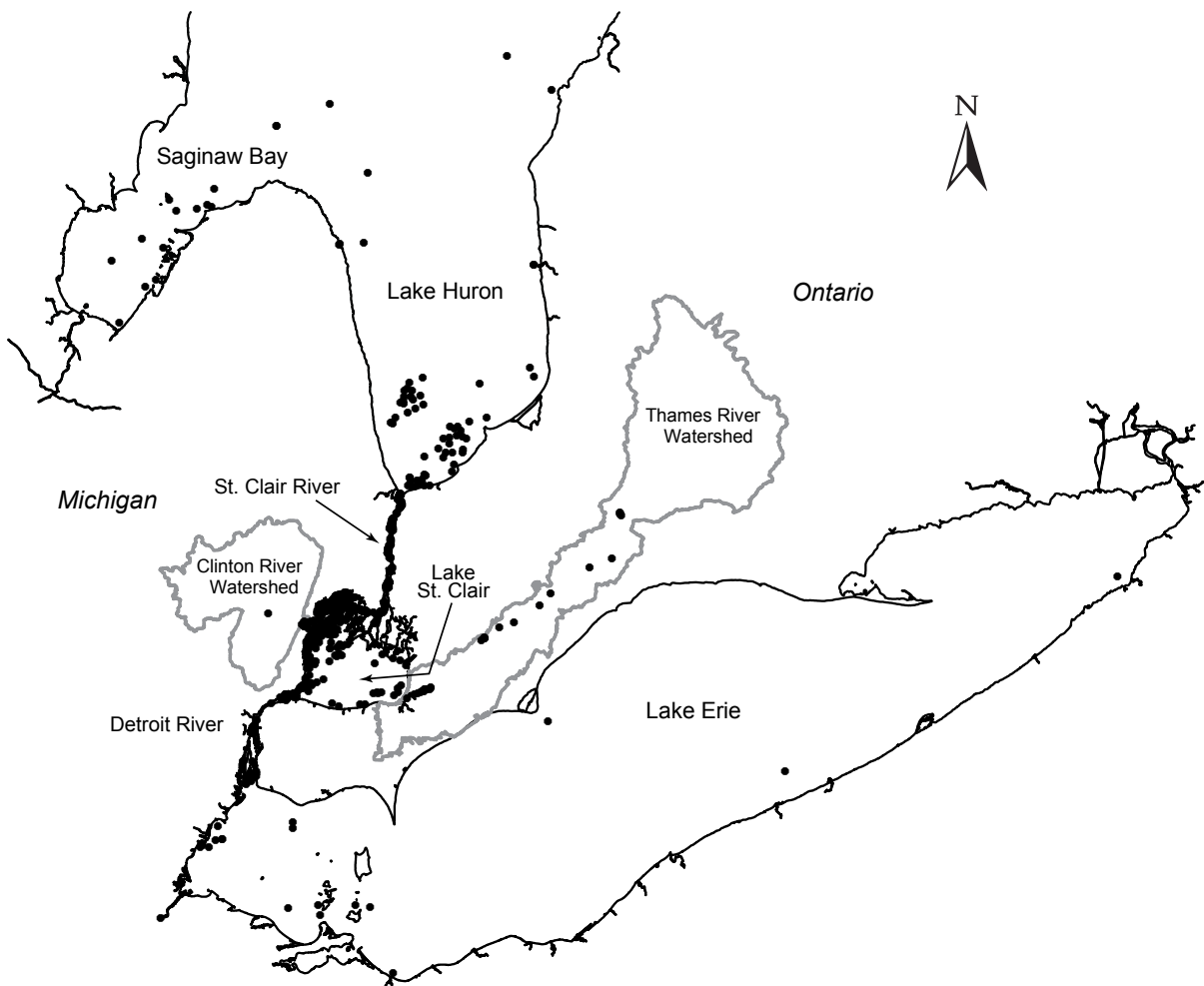
Figure 59.—Drains and smaller streams in the Clinton River watershed, in addition to the mainstem and major tributaries.

Clinton River Assessment



- | | |
|---|---|
| 1 – Clinton River, I-75 | 20 – Plum Brook, Dodge Park |
| 2 – Clinton River, Pontiac Lake Rd. | 21 – Gibson Drain, Dequindre Rd. |
| 3 – Clinton River, Cooley Lake Rd. | 22 – Big Beaver Creek, Mound Rd. |
| 4 – Sashabaw Creek, Waldon Rd. | 23 – Middle Branch Clinton River, Jewel Rd. |
| 5 – Clinton River, Squirrel Rd. | 24 – Middle Branch Clinton River, 24 Mile Rd. |
| 6 – Clinton River, Livernois Rd. | 25 – Middle Branch Clinton River, M-59 |
| 7 – Clinton River, Yates Dam | 26 – Coon Creek, Irwin Rd. |
| 8 – Galloway Creek, Squirrel Rd. | 27 – Coon Creek, 32 Mile Rd. |
| 9 – Sargents Creek, Tienken Rd. | 28 – Coon Creek, 28 Mile Rd. |
| 10 – Paint Creek, Tienken Rd. | 29 – East Branch Coon Creek, Irwin Rd. |
| 11 – West Branch Stony Creek, Stony Creek Rd. | 30 – East Branch Coon Creek, 33 Mile Rd. |
| 12 – West Branch Stony Creek, Snell Rd. | 31 – North Branch Clinton River, McKay Rd. |
| 13 – McClure Drain, 28 Mile Rd. | 32 – North Branch Clinton River, Wolcott Mills Metro Park |
| 14 – Clinton River, Van Dyke | 33 – North Branch Clinton River, Middle Branch confluence |
| 15 – Clinton River, Dodge Park | 34 – Apel Drain, McKay Rd. |
| 16 – Clinton River, Garfield | 35 – Kidder Creek, Boardman Rd. |
| 17 – Red Run, Ryan Rd. | 36 – Clinton River, Crocker Rd. |
| 18 – Red Run, Maple Lane | 37 – Clinton River, Bridgeview |
| 19 – Plum Brook, 19 Mile Rd. | 38 – Clinton River Spillway, Harper |

Figure 60.–Location of fish sampling sites surveyed during 2001–02.



Waterbody	Percent tags recovered
Clinton River	3.4
Lake Huron	10.8
St. Clair River	26.1
Lake St. Clair	47.8
Thames River	3.5
Detroit River	6.0
Lake Erie	2.5
Total tags recovered	770

Figure 61.—Walleye tag recoveries reported by sport and commercial fishers from walleye originally tagged at spawning time, 1980–1991, in the Mouth Segment of the Clinton River.