

Roscommon County

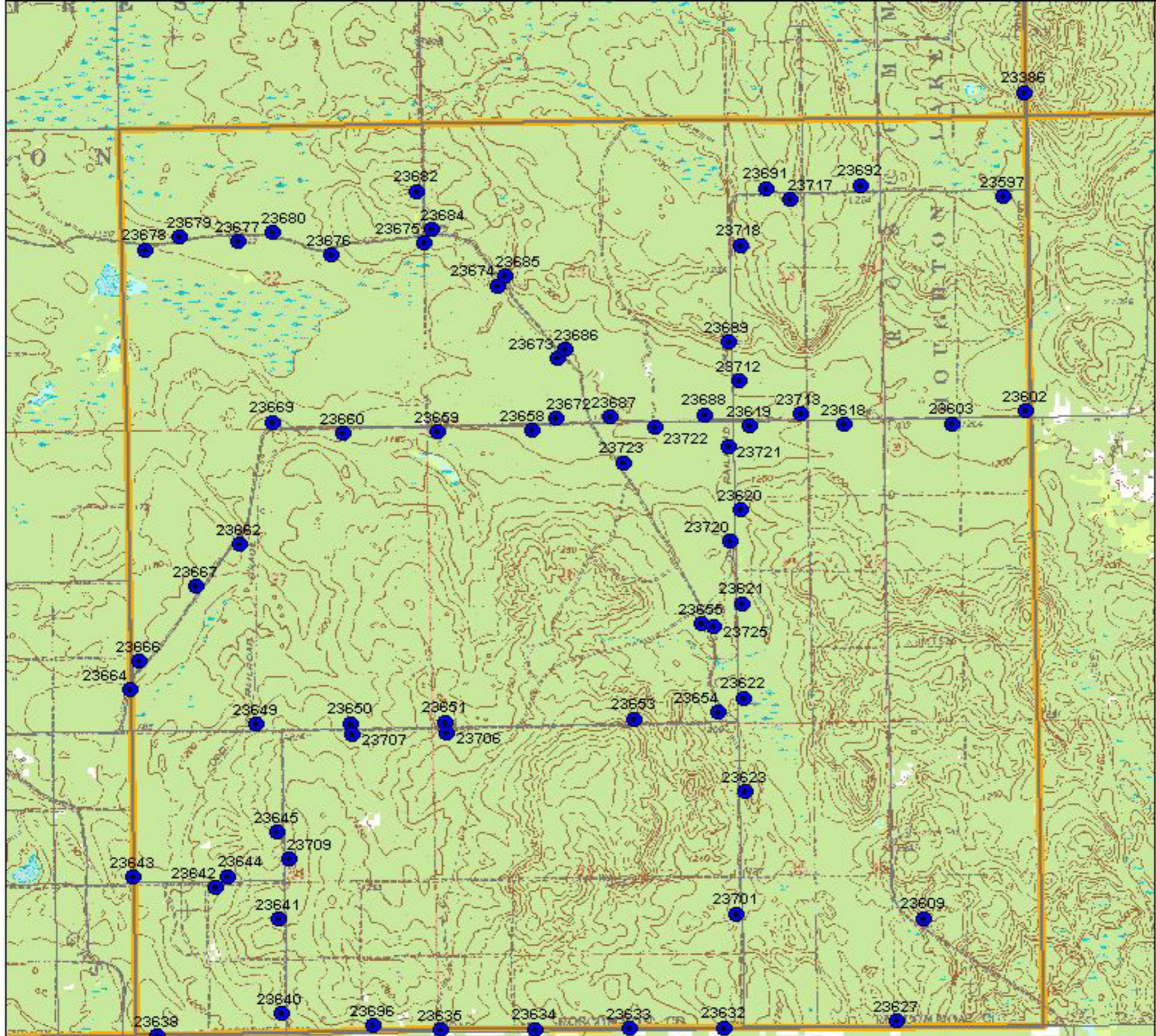
T21N R03W

Roscommon Township

Block 4

LEGEND

-  BBA Point Sampling Locations (each numbered)
 -  Priority Block (1/4 twp)
 -  Other Blocks
- USGS Topographic Information:
-  Major and County Roads
 -  Trails and Two-tracks
 -  Topographic Lines
- Landuse / Landcover Backdrop
-  City Blocks
 -  Open Land, Residential, etc. incl. agriculture lands
 -  Mixed/ Deciduous / Evergreen Forest
 -  Woody Wetlands, Emergent / Herbaceous Wetlands
 -  Open Water





0 0.1 0.2 0.3 0.4 0.5 Miles

0 0.2 0.4 0.6 Kilometers

(rev. 2005 may 18)