



# TIMBER SALE MAP

This information provided by authority of Part 525, 1994 PA 451, as amended.

Sale Number	Year
54 - 014	18

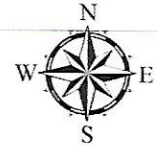
Forest Management Unit Atlanta		County Montmorency	Mapped By Matt Foster	Date 08/10/2018	Page 2	of 2
Township 29N	Range 02E	Section(s) and Subdivision(s) Sec. 22: NW1/4, NWNE. Sec. 15: S1/2SW, SWSE. Sec 24: N1/2NE, N1/2SE, SESE		Cruised By Matt Foster, Zach Crew	Scale 1:15,840	

### Cover Type

A = Aspen	H = Hemlock	N = Marsh	U = Upland Brush
B = Paper Birch	J = Jack Pine	O = Oak	UM = Upland Mixed
C = Cedar	L = Lowland Brush	P = Lowland Poplar	V = Bog or Marsh
D = Tread Bog	LM = Lowland Mixed	Q = Mixed Swamp Conifer	W = White Pine
E = Swamp Hdwoods	M = Mpl, Bch, Brch	R = Red Pine	X = Non Stocked
F = Spruce Fir	MC = Mixed Conifer	S = Black Spruce	Z = Water
G = Grass	MD = Mixed Deciduous	T = Tamarack	

### Density

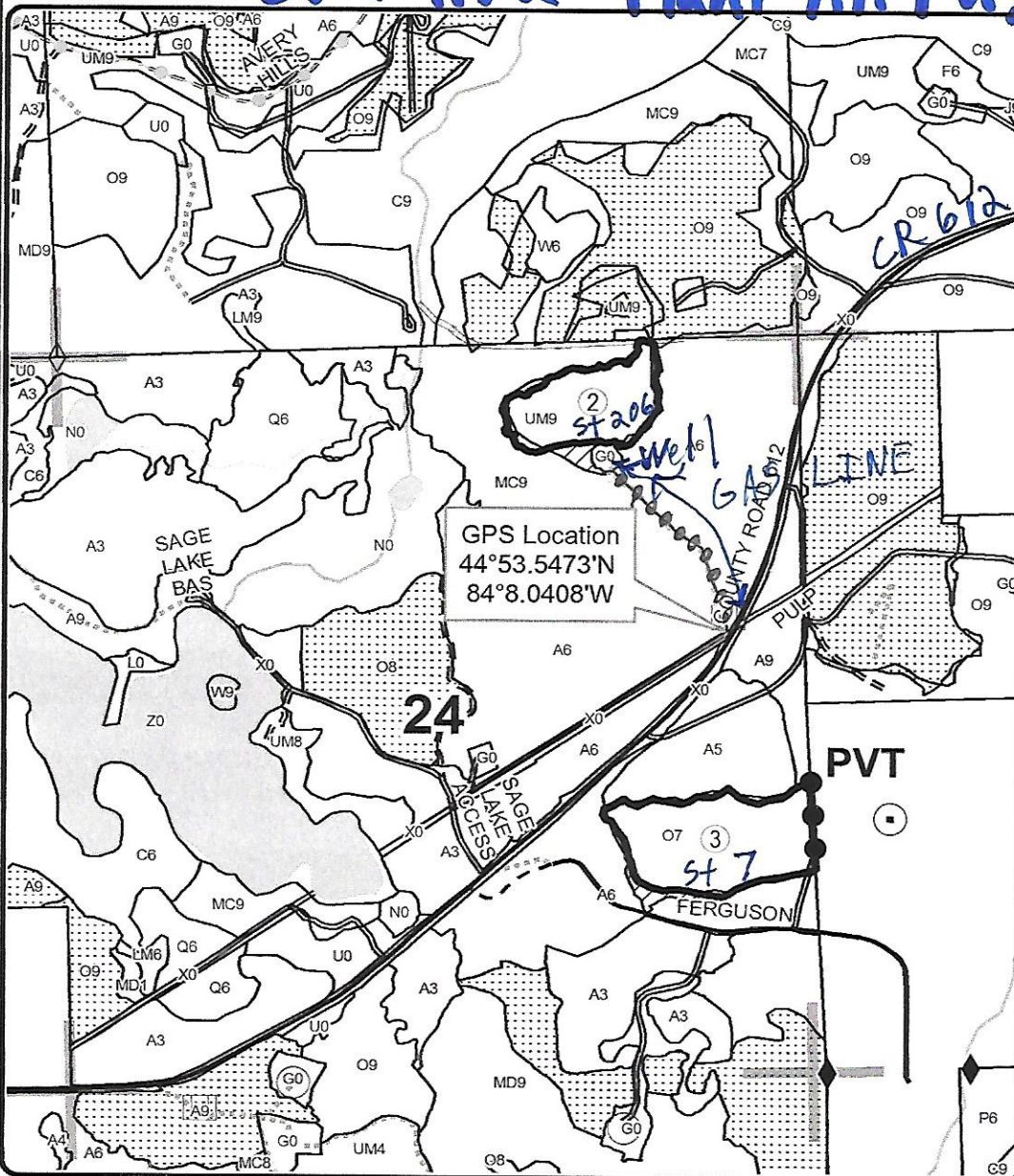
0 = Non Stocked	5 = Pole Timber Medium
1 = Seedling Sapling Poor	6 = Pole Timber Well
2 = Seedling Sapling Medium	7 = Saw Timber Poor
3 = Seedling Sapling Well	8 = Saw Timber Medium
4 = Pole Timber Poor	9 = Saw Timber Well



PU	Acres
1	96.3
2	12.5
3	19.5

**Bear Dog Oak**  
**Compartment 12**  
**128.3 Acres**

*654-1152 Plant All PUs*



### Legend

- Sale Boundary (Red)
- Private Line (Blue)
- Retention Area (Red)
- Nearby Timber Sales
- Stand Boundaries
- Oil & Gas Well Surface Locations
- Secondary Forest Road
- Forest Access Route
- Paved Road
- Gravel Road
- Temporary Management Access
- Recreational Trail
- Intermittent Stream
- Perennial River
- Lakes and Rivers
- Section Corners
- Pipeline
- PU\_Label

Locator Map  
1:200,000

