



TIMBER SALE MAP

This information provided by authority of Part 525, 1994 PA 451, as amended.

Forest Management Unit Baraga		County Baraga	Mapped By Shaun Sullivan	Date 03/03/2021	Page 1	of 1
Township 47N	Range 33W	Section(s) and Subdivision(s) 28, 32, 33, 34		Scale 1:18,000		
Cruised By Baraga Staff						

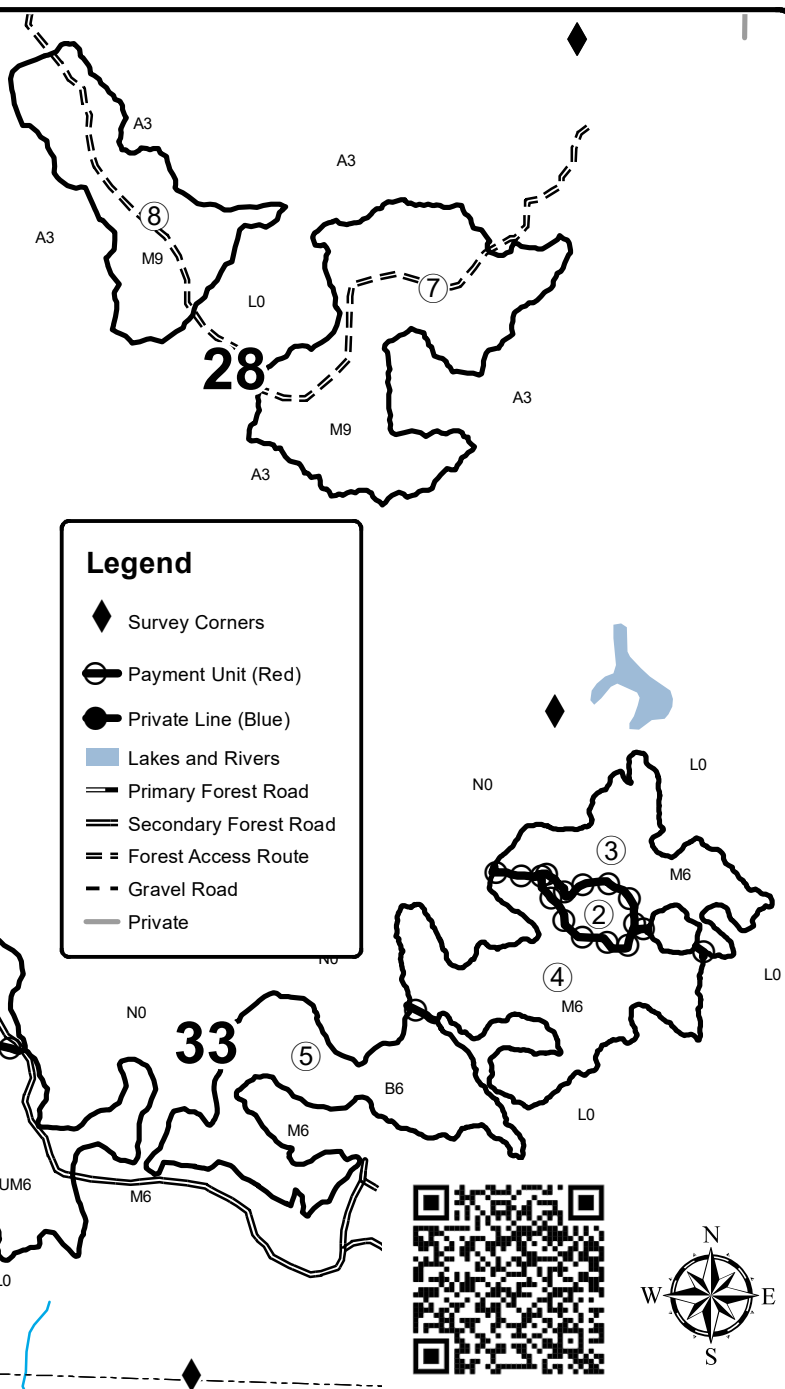
Cover Type

A = Aspen	H = Hemlock	N = Marsh	U = Upland Brush
B = Paper Birch	J = Jack Pine	O = Oak	UM = Upland Mixed
C = Cedar	L = Lowland Brush	P = Lowland Poplar	V = Bog or Marsh
D = Treed Bog	LM = Lowland Mixed	Q = Mixed Swamp Conifer	W = White Pine
E = Swamp Hdwoods	M = Mpl, Bch, Brch	R = Red Pine	X = Non Stocked
F = Spruce Fir	MC = Mixed Conifer	S = Black Spruce	Z = Water
G = Grass	MD = Mixed Deciduous	T = Tamarack	

Density

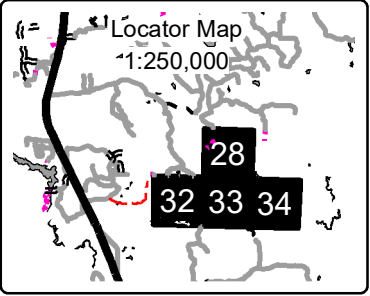
0 = Non Stocked	5 = Pole Timber Medium
1 = Seedling Sapling Poor	6 = Pole Timber Well
2 = Seedling Sapling Medium	7 = Saw Timber Poor
3 = Seedling Sapling Well	8 = Saw Timber Medium
4 = Pole Timber Poor	9 = Saw Timber Well

Free Man Mix									
361.3									
Baraga County, Compartment 29, 30									
UNIT	1	2	3	4	5	6	7	8	TOTALS
ACRES	44.6	44.1	27.6	46.2	46	45.2	66.7	40.9	361.3
Sawlogs MBF									
Paper Birch	0.0	0.0	17.7	25.3	7.0	6.1	2.1	3.0	61.2
Red Maple	16.7	17.8	10.5	7.5	13.8	6.9	45.2	12.6	131.0
Sugar Maple	16.1	0.0	0.0	0.0	0.0	0.0	30.4	18.6	65.1
Yellow Birch	19.5	8.0	24.1	22.5	3.6	0.0	14.4	6.6	98.7
TOTAL	52.3	25.8	52.3	55.3	24.4	13.0	92.1	40.8	356.0
Pulpwood Cords									
Balsam Fir	0	4	3	21	54	186	3	5	276
Balsam Poplar	0	0	0	0	0	21	0	0	21
Mixed Aspen	0	0	107	407	269	124	0	7	914
Mixed Hardwood	205	177	382	537	400	325	436	160	2622
Mixed Spruce	0	3	29	91	226	94	0	0	443
Paper Birch	0	0	142	214	112	51	2	10	531
Tamarack	0	0	0	0	14	0	0	0	14
TOTAL	205	184	663	1270	1075	801	441	182	4821



State holds Easement on this road.

PVT



46°25.6596'N
88°27.1490'W

