



TIMBER SALE MAP

This information provided by authority of Part 525, 1994 PA 451, as amended.

Forest Management Unit Baraga		County Houghton	Mapped By Collins	Date 03/05/2021	Page 1	of 1
Township 50N	Range 35W	Section(s) and Subdivision(s) Sec 4 E1/2SW, Sec 9 NWNW,SENW,E1/2SW		Scale 1:15,840		
Cover Type			Density			
A = Aspen	H = Hemlock	N = Marsh	U = Upland Brush	0 = Non Stocked	5 = Pole Timber Medium	
B = Paper Birch	J = Jack Pine	O = Oak	UM = Upland Mixed	1 = Seedling Sapling Poor	6 = Pole Timber Well	
C = Cedar	L = Lowland Brush	P = Lowland Poplar	V = Bog or Marsh	2 = Seedling Sapling Medium	7 = Saw Timber Poor	
D = Treed Bog	LM = Lowland Mixed	Q = Mixed Swamp Conifer	W = White Pine	3 = Seedling Sapling Well	8 = Saw Timber Medium	
E = Swamp Hdwoods	M = Mpl, Bch, Brch	R = Red Pine	X = Non Stocked	4 = Pole Timber Poor	9 = Saw Timber Well	
F = Spruce Fir	MC = Mixed Conifer	S = Black Spruce	Z = Water			
G = Grass	MD = Mixed Deciduous	T = Tamarack				

Legend

- Highway
- Gravel Road
- Private Road
- Perennial River
- Lakes and Rivers
- Against USFS (Triple Orange)
- Payment Unit (Double Orange)
- Private Line (Triple Orange and Red Blaze)
- Nearby Timber Sales
- Section Corners

GNA2 Roadster

31.7 Acres

Houghton County, Compartment 5003

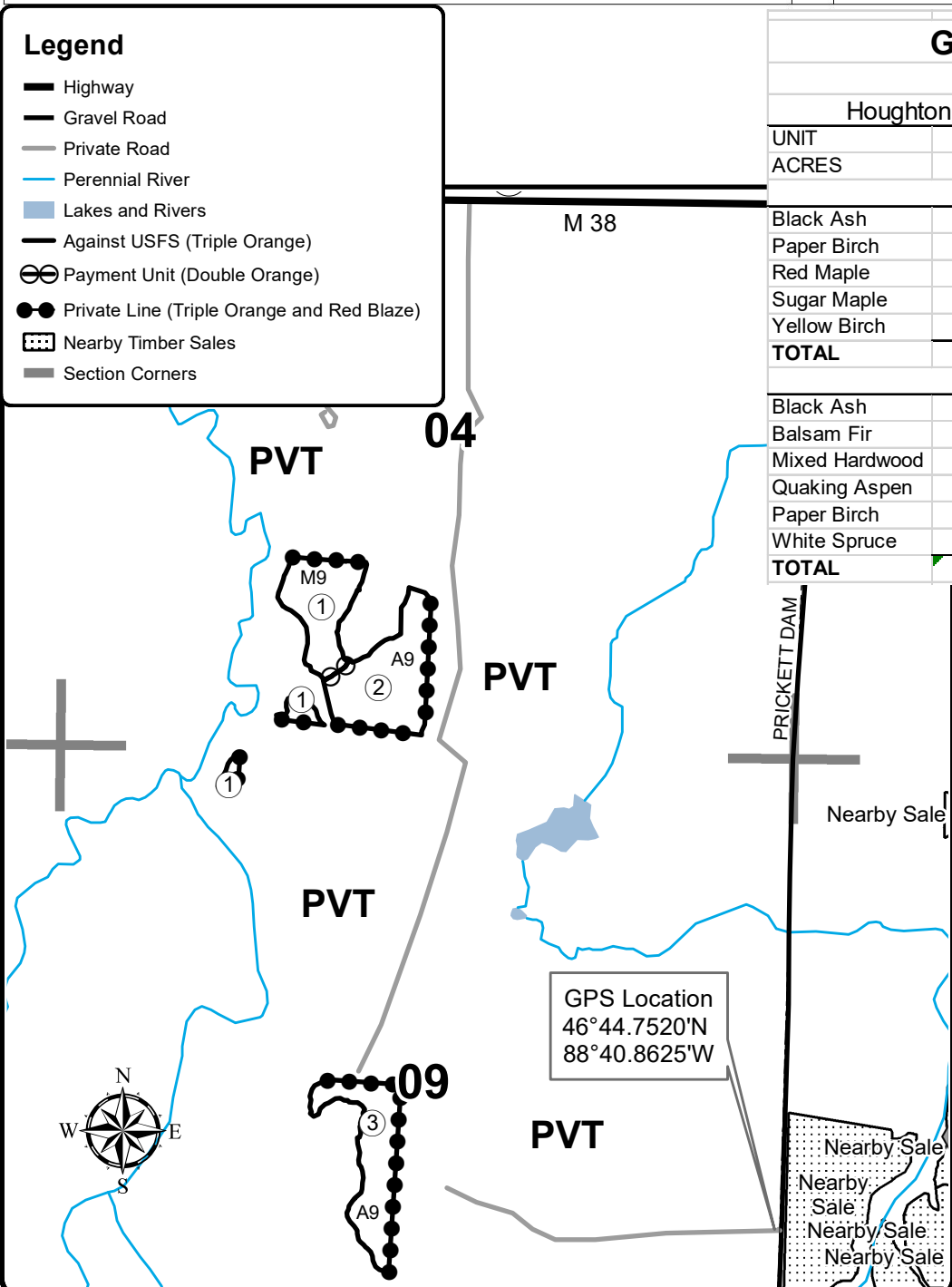
UNIT	1	2	3	TOTALS
ACRES	9.7	11.9	10.1	31.7

Sawlogs MBF

Black Ash	0.8	0.0	0.0	0.8
Paper Birch	0.0	0.0	1.9	1.9
Red Maple	2.1	1.5	0.9	4.5
Sugar Maple	5.6	0.0	0.0	5.6
Yellow Birch	0.4	0.0	0.0	0.4
TOTAL	8.9	1.5	2.8	13.2

Pulpwood Cords

Black Ash	5	0	0	5
Balsam Fir	0	0	2	2
Mixed Hardwood	80	96	39	215
Quaking Aspen	0	269	291	560
Paper Birch	0	0	24	24
White Spruce	5	7	0	12
TOTAL	85	372	356	818



Sale Packet

Locator Map

1:250,000

