



TIMBER SALE MAP

This information provided by authority of Part 525, 1994 PA 451, as amended.

Forest Management Unit Baraga		County Baraga	Mapped By Carlson	Date 3/19/21	Page 1	of 1
Township 49N	Range 33W	Section(s) and Subdivision(s) Sec 36 - NE, W1/2SE		Scale 1:15,840		
Cruised By Baraga Staff						

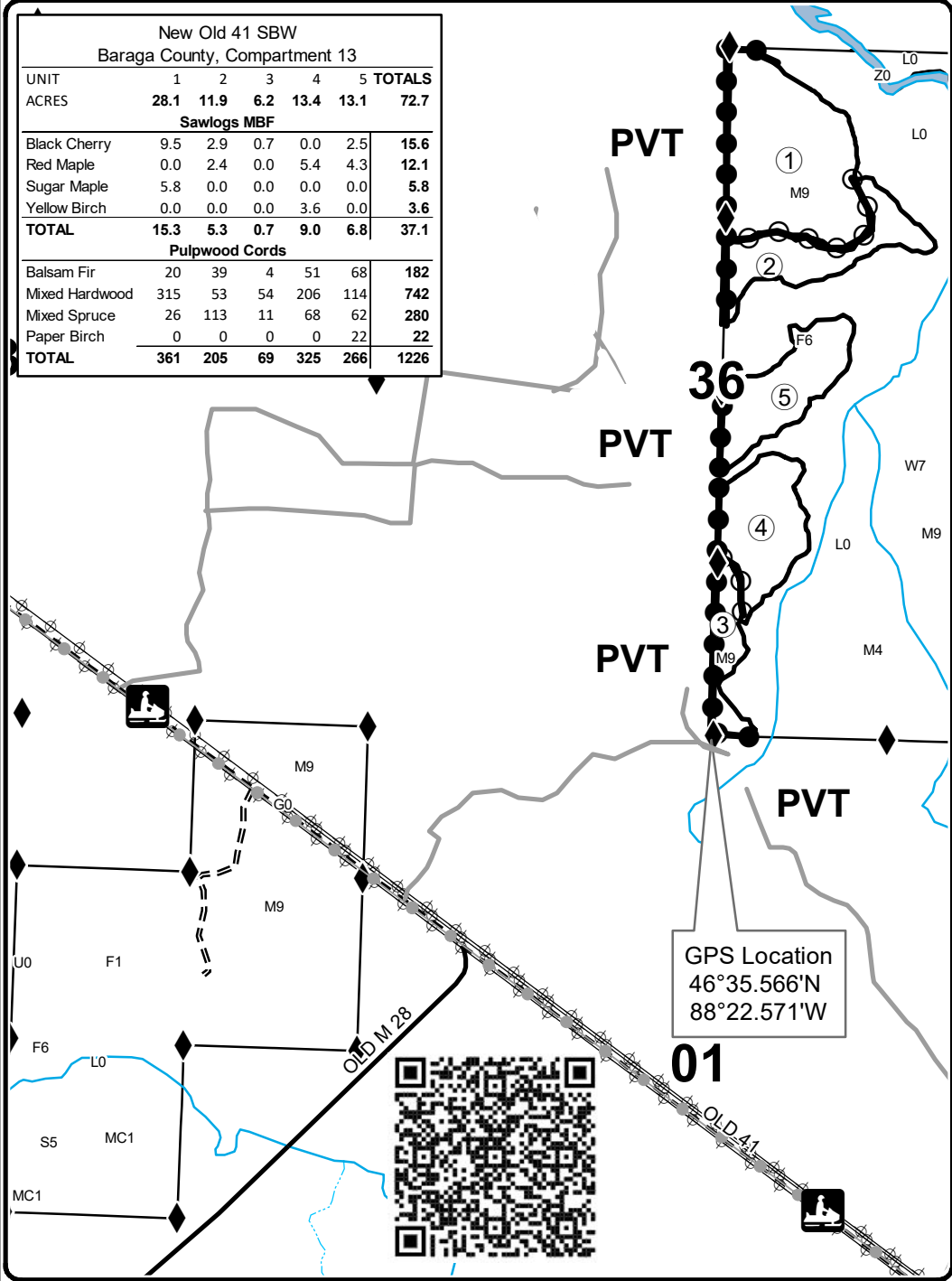
Cover Type

A = Aspen	H = Hemlock	N = Marsh	U = Upland Brush
B = Paper Birch	J = Jack Pine	O = Oak	UM = Upland Mixed
C = Cedar	L = Lowland Brush	P = Lowland Poplar	V = Bog or Marsh
D = Treed Bog	LM = Lowland Mixed	Q = Mixed Swamp Conifer	W = White Pine
E = Swamp Hdwoods	M = Mpl, Bch, Brch	R = Red Pine	X = Non Stocked
F = Spruce Fir	MC = Mixed Conifer	S = Black Spruce	Z = Water
G = Grass	MD = Mixed Deciduous	T = Tamarack	

Density

0 = Non Stocked	5 = Pole Timber Medium
1 = Seedling Sapling Poor	6 = Pole Timber Well
2 = Seedling Sapling Medium	7 = Saw Timber Poor
3 = Seedling Sapling Well	8 = Saw Timber Medium
4 = Pole Timber Poor	9 = Saw Timber Well

New Old 41 SBW Baraga County, Compartment 13						
UNIT	1	2	3	4	5	TOTALS
ACRES	28.1	11.9	6.2	13.4	13.1	72.7
Sawlogs MBF						
Black Cherry	9.5	2.9	0.7	0.0	2.5	15.6
Red Maple	0.0	2.4	0.0	5.4	4.3	12.1
Sugar Maple	5.8	0.0	0.0	0.0	0.0	5.8
Yellow Birch	0.0	0.0	0.0	3.6	0.0	3.6
TOTAL	15.3	5.3	0.7	9.0	6.8	37.1
Pulpwood Cords						
Balsam Fir	20	39	4	51	68	182
Mixed Hardwood	315	53	54	206	114	742
Mixed Spruce	26	113	11	68	62	280
Paper Birch	0	0	0	0	22	22
TOTAL	361	205	69	325	266	1226

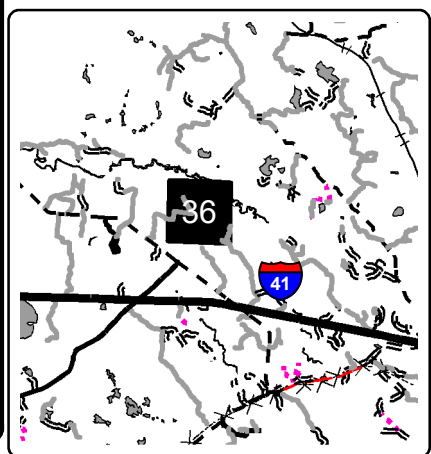


Legend

Trail_Symbols

- Snowmobile Trails
- Survey Corners
- Forest Access Route
- Paved Road
- Gravel Road
- Private
- Powerline
- Lakes and Rivers
- Against State (Red)
- Payment Unit (Red)
- Private Line (Blue)

Locator Map 1:200,000



GPS Location
46°35.566'N
88°22.571'W

