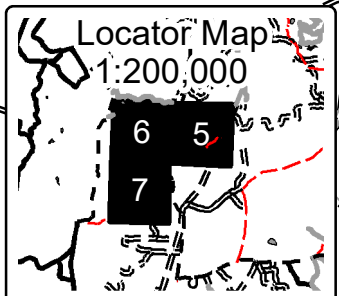
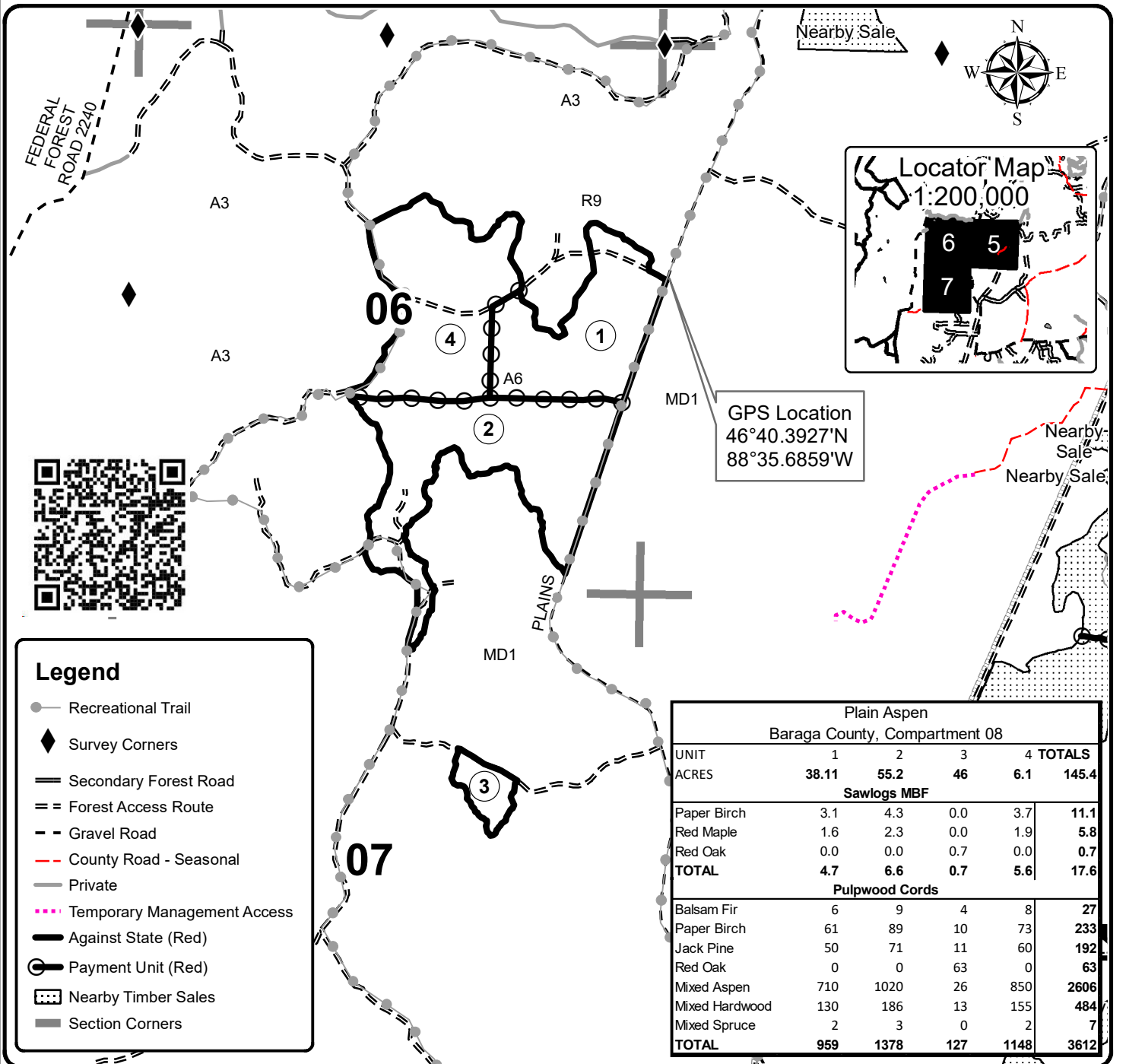




# TIMBER SALE MAP

This information provided by authority of Part 525, 1994 PA 451, as amended.

Forest Management Unit 11		County Baraga	Mapped By Shaun Sullivan	Date 05/02/2021	Page 1	of 1
Township 49N	Range 34W	Section(s) and Subdivision(s) Sec 5 SWNW; Sec 6 SENW, S1/2, NESW, SE; Sec 7 NWNE, S1/2NE		Scale 1:16,652		
Cover Type			Density			
A = Aspen	H = Hemlock	N = Marsh	U = Upland Brush	0 = Non Stocked	5 = Pole Timber Medium	
B = Paper Birch	J = Jack Pine	O = Oak	UM = Upland Mixed	1 = Seedling Sapling Poor	6 = Pole Timber Well	
C = Cedar	L = Lowland Brush	P = Lowland Poplar	V = Bog or Marsh	2 = Seedling Sapling Medium	7 = Saw Timber Poor	
D = Treed Bog	LM = Lowland Mixed	Q = Mixed Swamp Conifer	W = White Pine	3 = Seedling Sapling Well	8 = Saw Timber Medium	
E = Swamp Hdwoods	M = Mpl, Bch, Brch	R = Red Pine	X = Non Stocked	4 = Pole Timber Poor	9 = Saw Timber Well	
F = Spruce Fir	MC = Mixed Conifer	S = Black Spruce	Z = Water			
G = Grass	MD = Mixed Deciduous	T = Tamarack				



GPS Location  
46°40.3927'N  
88°35.6859'W



### Legend

- Recreational Trail
- Survey Corners
- Secondary Forest Road
- Forest Access Route
- Gravel Road
- County Road - Seasonal
- Private
- Temporary Management Access
- Against State (Red)
- Payment Unit (Red)
- Nearby Timber Sales
- Section Corners

Plain Aspen Baraga County, Compartment 08					
UNIT	1	2	3	4	TOTALS
ACRES	38.11	55.2	46	6.1	145.4
Sawlogs MBF					
Paper Birch	3.1	4.3	0.0	3.7	11.1
Red Maple	1.6	2.3	0.0	1.9	5.8
Red Oak	0.0	0.0	0.7	0.0	0.7
<b>TOTAL</b>	<b>4.7</b>	<b>6.6</b>	<b>0.7</b>	<b>5.6</b>	<b>17.6</b>
Pulpwood Cords					
Balsam Fir	6	9	4	8	27
Paper Birch	61	89	10	73	233
Jack Pine	50	71	11	60	192
Red Oak	0	0	63	0	63
Mixed Aspen	710	1020	26	850	2606
Mixed Hardwood	130	186	13	155	484
Mixed Spruce	2	3	0	2	7
<b>TOTAL</b>	<b>959</b>	<b>1378</b>	<b>127</b>	<b>1148</b>	<b>3612</b>

