



# TIMBER SALE MAP

This information provided by authority of Part 525, 1994 PA 451, as amended.

Forest Management Unit <b>Baraga</b>		County <b>Houghton &amp; Iron</b>	Mapped By <b>Brodeur</b>	Date <b>05/25/2022</b>	Page <b>1</b>	of <b>1</b>
Township <b>46N &amp; 47N</b>	Range <b>36W</b>	Section(s) and Subdivision(s) <b>See Map</b>		Scale <b>1:24,000</b>		
Cruised By <b>Baraga Personnel</b>						

### Cover Type

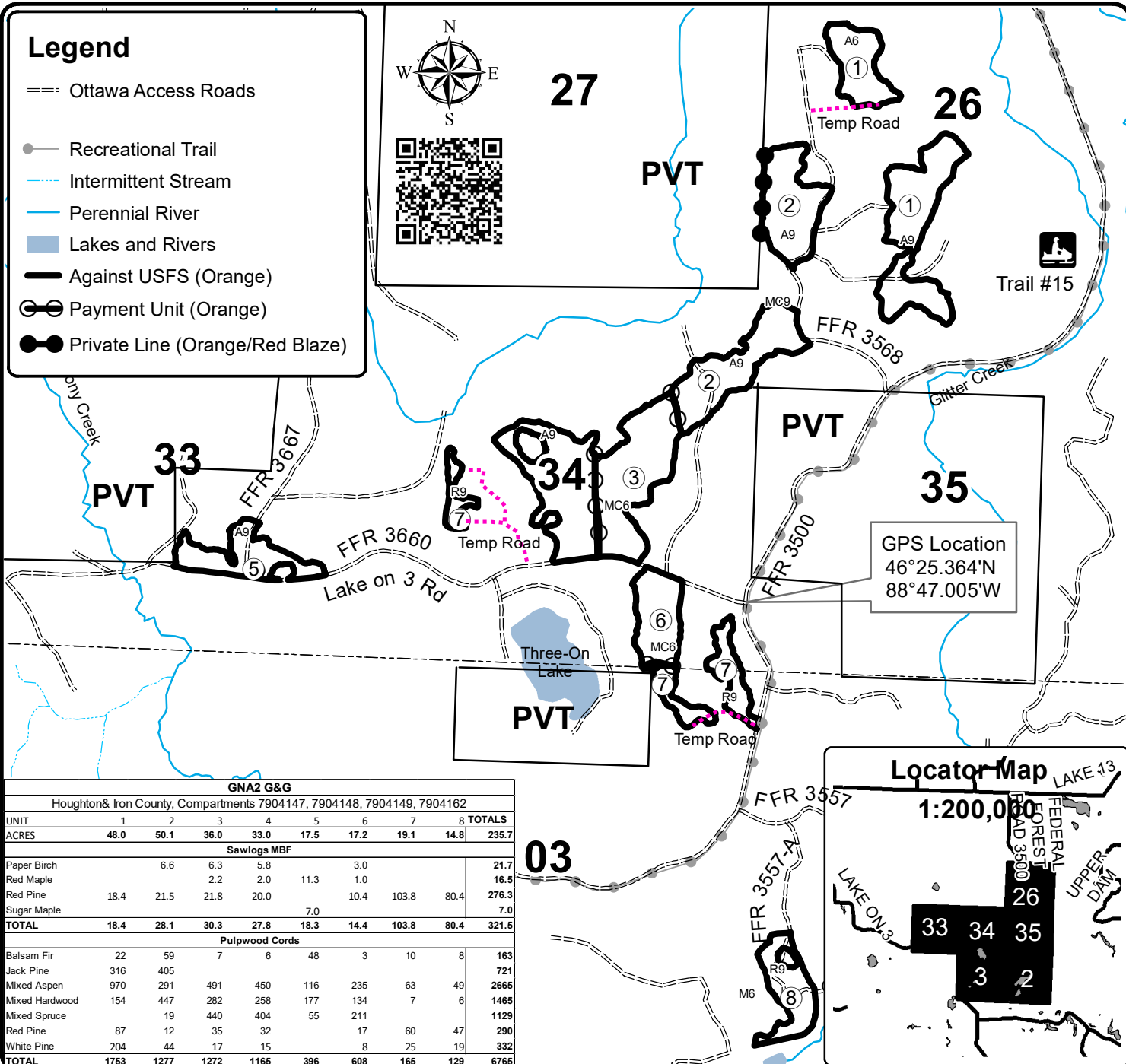
A = Aspen	H = Hemlock	N = Marsh	U = Upland Brush
B = Paper Birch	J = Jack Pine	O = Oak	UM = Upland Mixed
C = Cedar	L = Lowland Brush	P = Lowland Poplar	V = Bog or Marsh
D = Treed Bog	LM = Lowland Mixed	Q = Mixed Swamp Conifer	W = White Pine
E = Swamp Hdwoods	M = Mpl, Bch, Brch	R = Red Pine	X = Non Stocked
F = Spruce Fir	MC = Mixed Conifer	S = Black Spruce	Z = Water
G = Grass	MD = Mixed Deciduous	T = Tamarack	

### Density

0 = Non Stocked	5 = Pole Timber Medium
1 = Seedling Sapling Poor	6 = Pole Timber Well
2 = Seedling Sapling Medium	7 = Saw Timber Poor
3 = Seedling Sapling Well	8 = Saw Timber Medium
4 = Pole Timber Poor	9 = Saw Timber Well

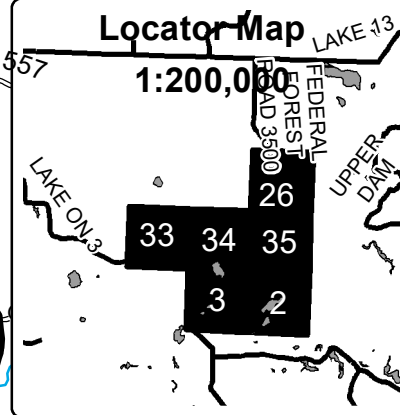
## Legend

- Ottawa Access Roads
- Recreational Trail
- Intermittent Stream
- Perennial River
- Lakes and Rivers
- Against USFS (Orange)
- Payment Unit (Orange)
- Private Line (Orange/Red Blaze)



### Locator Map

1:200,000



GNA2 G&G								
Houghton & Iron County, Compartments 7904147, 7904148, 7904149, 7904162								
UNIT	1	2	3	4	5	6	7	8 TOTALS
ACRES	48.0	50.1	36.0	33.0	17.5	17.2	19.1	235.7
Sawlogs MBF								
Paper Birch		6.6	6.3	5.8			3.0	21.7
Red Maple			2.2	2.0	11.3	1.0		16.5
Red Pine	18.4	21.5	21.8	20.0		10.4	103.8	276.3
Sugar Maple					7.0			7.0
TOTAL	18.4	28.1	30.3	27.8	18.3	14.4	103.8	321.5
Pulpwood Cords								
Balsam Fir	22	59	7	6	48	3	10	163
Jack Pine	316	405						721
Mixed Aspen	970	291	491	450	116	235	63	2665
Mixed Hardwood	154	447	282	258	177	134	7	1465
Mixed Spruce		19	440	404	55	211		1129
Red Pine	87	12	35	32		17	60	290
White Pine	204	44	17	15		8	25	332
TOTAL	1753	1277	1272	1165	396	608	165	6765

