



TIMBER SALE MAP

This information provided by authority of Part 525, 1994 PA 451, as amended.

Forest Management Unit Baraga		County Houghton & Iron	Mapped By Brodeur	Date 05/25/2022	Page 1	of 3
Township 46N & 47N	Range 35W & 36W	Section(s) and Subdivision(s) See Map		Scale 1:15,840		

Cover Type

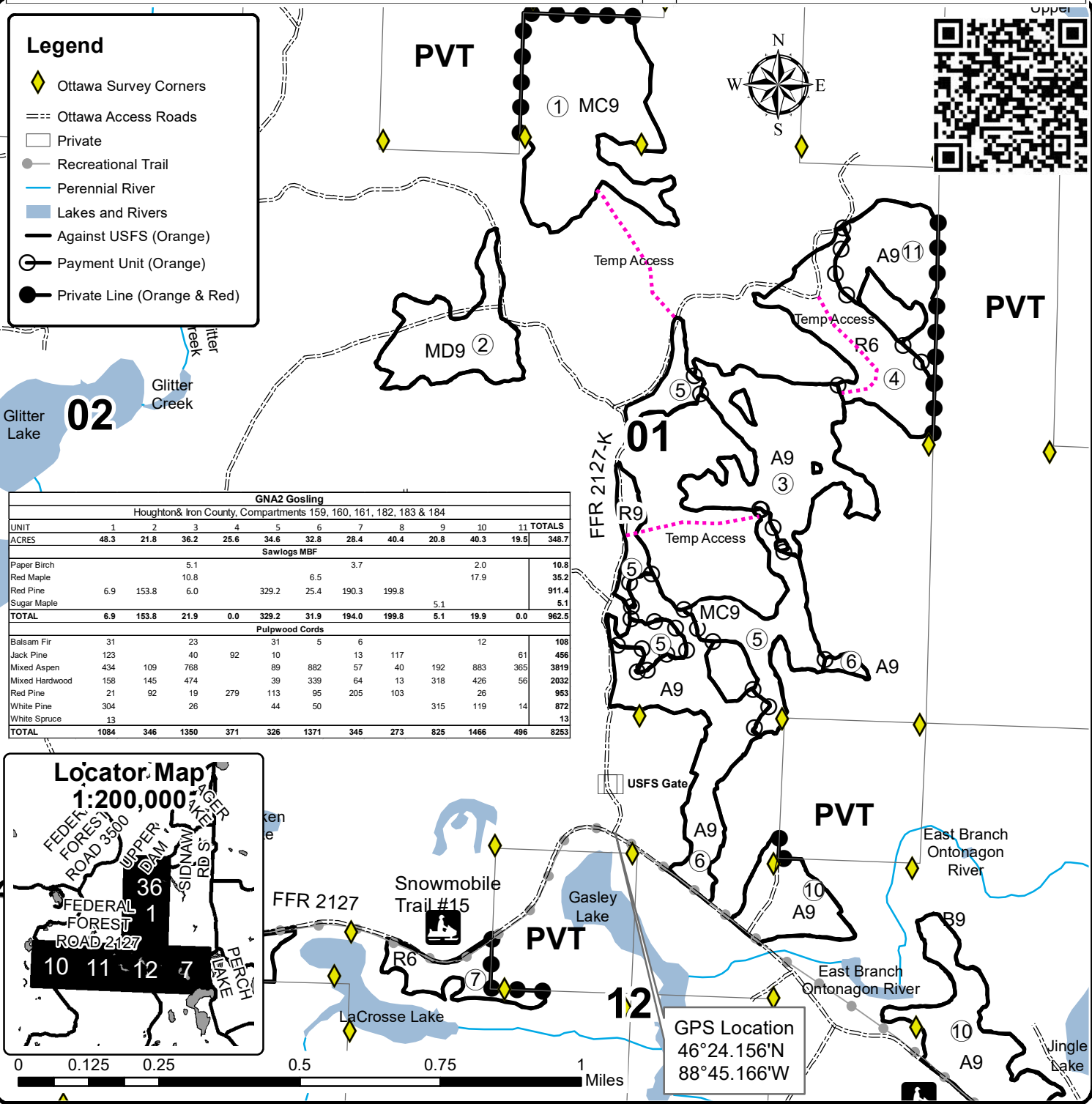
- A = Aspen
- B = Paper Birch
- C = Cedar
- D = Treed Bog
- E = Swamp Hdwoods
- F = Spruce Fir
- G = Grass
- H = Hemlock
- J = Jack Pine
- L = Lowland Brush
- LM = Lowland Mixed
- M = Mpl, Bch, Brch
- MC = Mixed Conifer
- MD = Mixed Deciduous
- N = Marsh
- O = Oak
- P = Lowland Poplar
- Q = Mixed Swamp Conifer
- R = Red Pine
- S = Black Spruce
- T = Tamarack
- U = Upland Brush
- UM = Upland Mixed
- V = Bog or Marsh
- W = White Pine
- X = Non Stocked
- Z = Water

Density

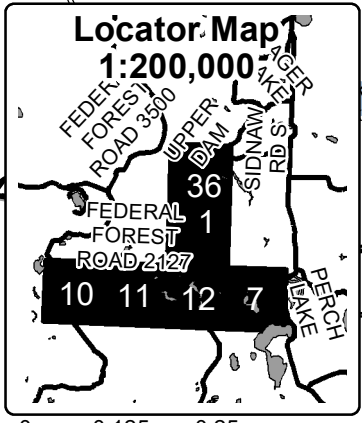
- 0 = Non Stocked
- 1 = Seedling Sapling Poor
- 2 = Seedling Sapling Medium
- 3 = Seedling Sapling Well
- 4 = Pole Timber Poor
- 5 = Pole Timber Medium
- 6 = Pole Timber Well
- 7 = Saw Timber Poor
- 8 = Saw Timber Medium
- 9 = Saw Timber Well

Legend

- Ottawa Survey Corners
- Ottawa Access Roads
- Private
- Recreational Trail
- Perennial River
- Lakes and Rivers
- Against USFS (Orange)
- Payment Unit (Orange)
- Private Line (Orange & Red)



GNA2 Gosling												
Houghton & Iron County, Compartments 159, 160, 161, 182, 183 & 184												
UNIT	1	2	3	4	5	6	7	8	9	10	11	TOTALS
ACRES	48.3	21.8	36.2	25.6	34.6	32.8	28.4	40.4	20.8	40.3	19.5	348.7
Sawlogs MBF												
Paper Birch			5.1				3.7				2.0	10.8
Red Maple			10.8			6.5					17.9	35.2
Red Pine	6.9	153.8	6.0		329.2	25.4	190.3	199.8				911.4
Sugar Maple									5.1			5.1
TOTAL	6.9	153.8	21.9	0.0	329.2	31.9	194.0	199.8	5.1	19.9	0.0	962.5
Pulpwood Cords												
Balsam Fir	31		23		31		5		6		12	108
Jack Pine	123		40	92	10		13	117			61	456
Mixed Aspen	434	109	768		89	882	57	40	192	883	365	3819
Mixed Hardwood	158	145	474		39	339	64	13	318	426	56	2032
Red Pine	21	92	19	279	113	95	205	103		26		953
White Pine	304		26		44	50			315	119	14	872
White Spruce	13											13
TOTAL	1084	346	1350	371	326	1371	345	273	825	1466	496	8253



GPS Location
 46°24.156'N
 88°45.166'W