



TIMBER SALE MAP

This information provided by authority of Part 525, 1994 PA 451, as amended.

Forest Management Unit Baraga		County Houghton	Mapped By Brodeur	Date 4/4/2022	Page 1	of 2
Township 47N	Range 36W	Section(s) and Subdivision(s) S2 S1/2NW, NESW, S1/2SW; S3 SENE, NWSE, S1/2SE; S5 S1/2SE; S9 E1/2NE; S10 N1/2SE, SWSE, S1/2NW, S1/2NE, N1/2SW, SESW; S11 SWNW, NWSW		Scale 1:15,840		

Cover Type

A = Aspen	H = Hemlock	N = Marsh	U = Upland Brush
B = Paper Birch	J = Jack Pine	O = Oak	UM = Upland Mixed
C = Cedar	L = Lowland Brush	P = Lowland Poplar	V = Bog or Marsh
D = Treed Bog	LM = Lowland Mixed	Q = Mixed Swamp Conifer	W = White Pine
E = Swamp Hdwoods	M = Mpl, Bch, Brch	R = Red Pine	X = Non Stocked
F = Spruce Fir	MC = Mixed Conifer	S = Black Spruce	Z = Water
G = Grass	MD = Mixed Deciduous	T = Tamarack	

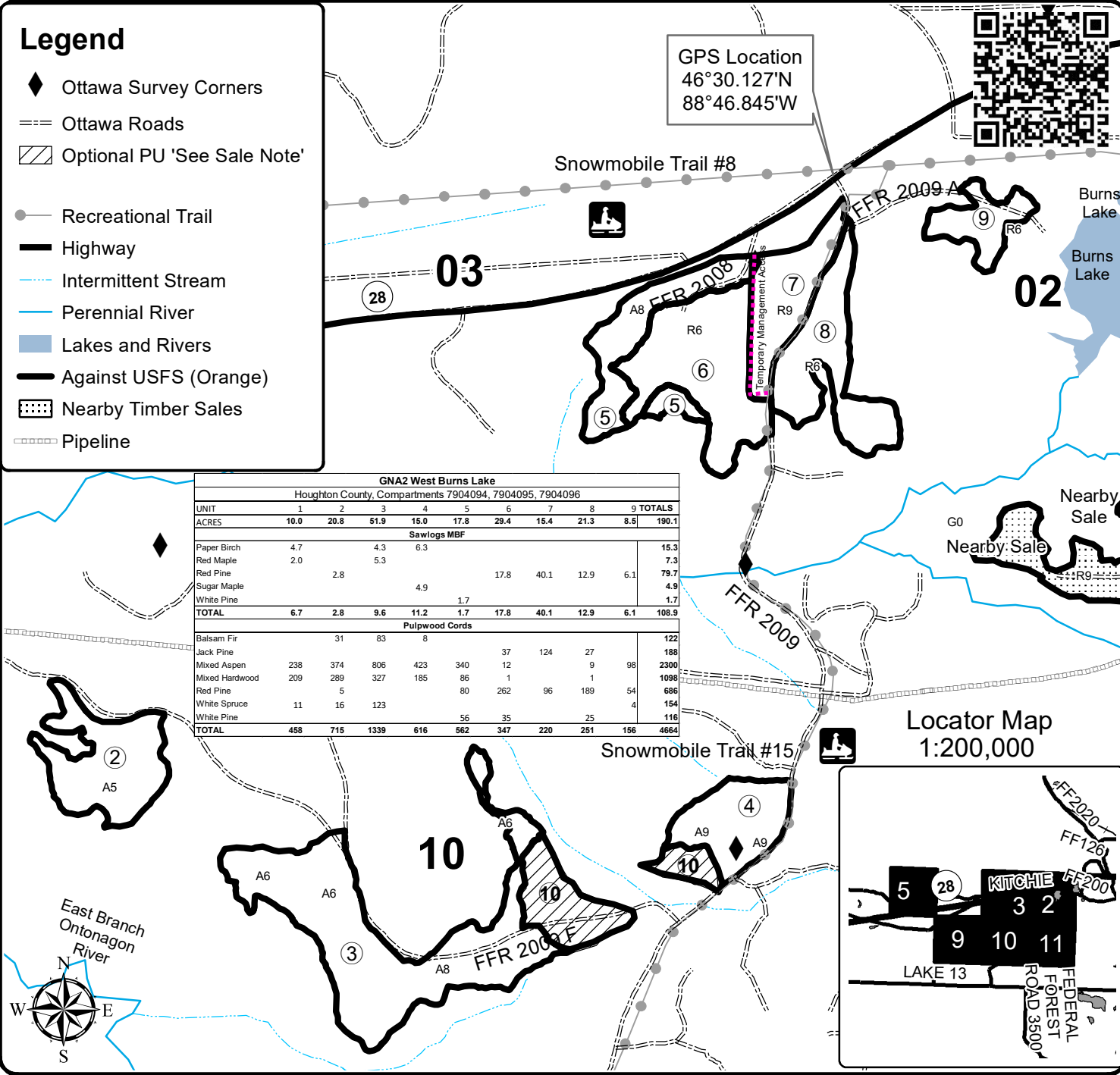
Density

0 = Non Stocked	5 = Pole Timber Medium
1 = Seedling Sapling Poor	6 = Pole Timber Well
2 = Seedling Sapling Medium	7 = Saw Timber Poor
3 = Seedling Sapling Well	8 = Saw Timber Medium
4 = Pole Timber Poor	9 = Saw Timber Well

Legend

- ◆ Ottawa Survey Corners
- == Ottawa Roads
- ▨ Optional PU 'See Sale Note'
- Recreational Trail
- Highway
- Intermittent Stream
- Perennial River
- Lakes and Rivers
- Against USFS (Orange)
- ▨ Nearby Timber Sales
- Pipeline

GPS Location
46°30.127'N
88°46.845'W



GNA2 West Burns Lake										
Houghton County, Compartments 7904094, 7904095, 7904096										
UNIT	1	2	3	4	5	6	7	8	9	TOTALS
ACRES	10.0	20.8	51.9	15.0	17.8	29.4	15.4	21.3	8.5	190.1
Sawlogs MBF										
Paper Birch	4.7		4.3	6.3						15.3
Red Maple	2.0		5.3							7.3
Red Pine		2.8			17.8	40.1	12.9	6.1		79.7
Sugar Maple				4.9						4.9
White Pine					1.7					1.7
TOTAL	6.7	2.8	9.6	11.2	1.7	17.8	40.1	12.9	6.1	108.9
Pulpwood Cords										
Balsam Fir		31	83	8						122
Jack Pine						37	124	27		188
Mixed Aspen	238	374	806	423	340	12	9	98		2300
Mixed Hardwood	209	289	327	185	86	1	1			1098
Red Pine		5			80	262	96	189	54	686
White Spruce	11	16	123						4	154
White Pine					56	35		25		116
TOTAL	488	715	1339	616	562	347	220	251	156	4664

Locator Map
1:200,000

