

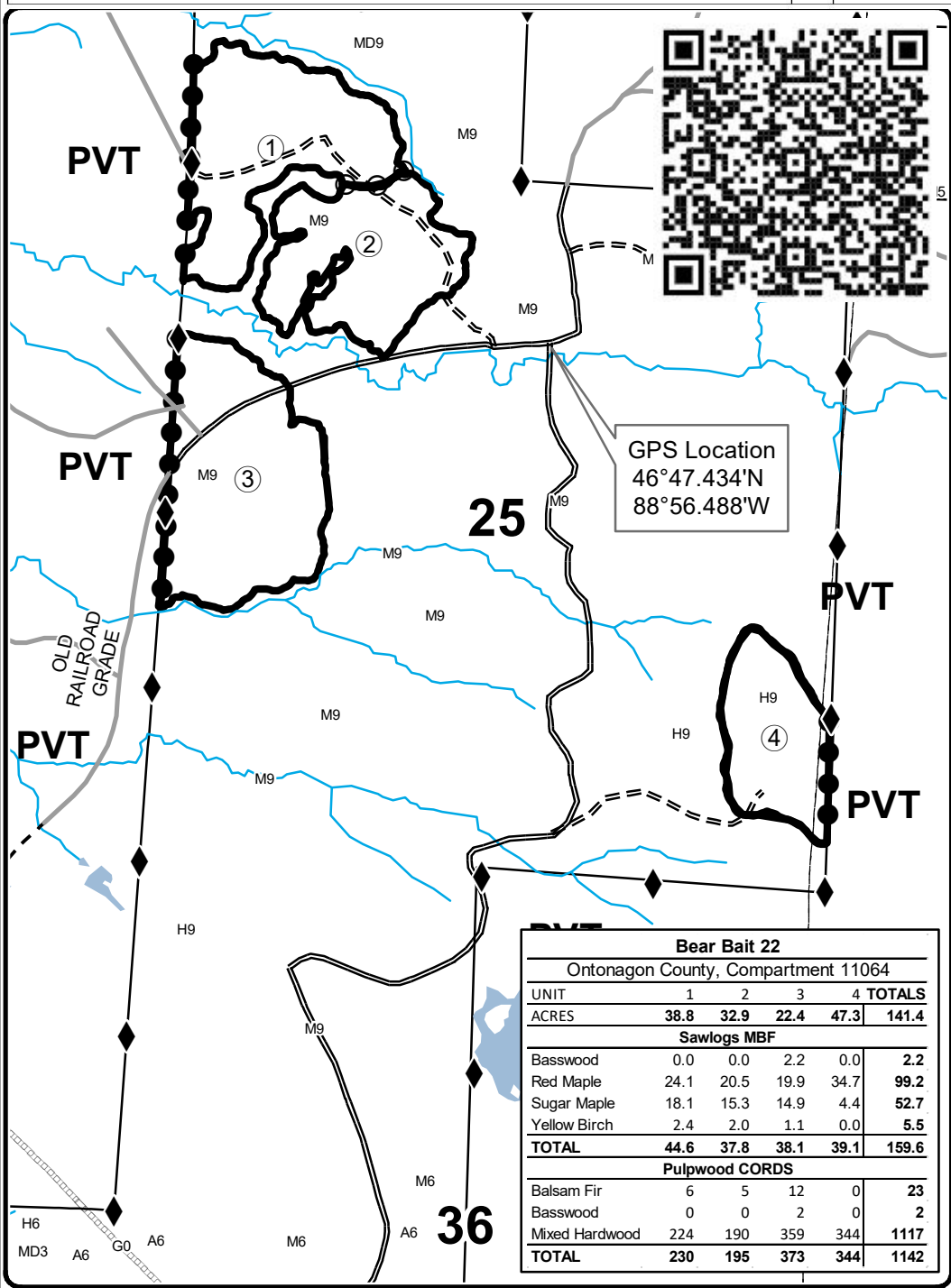


# TIMBER SALE MAP

This information provided by authority of Part 525, 1994 PA 451, as amended.

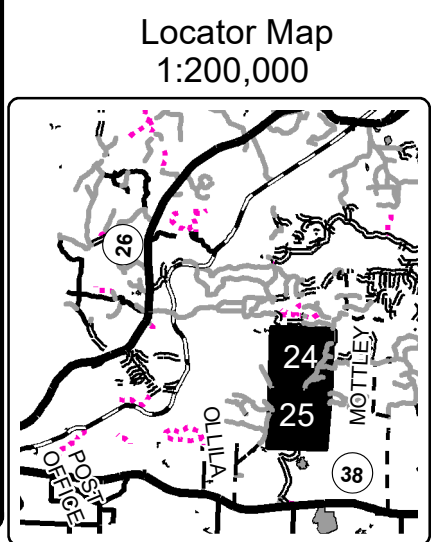
Forest Management Unit <b>Baraga</b>		County <b>Ontonagon</b>	Mapped By <b>Carlson</b>	Date <b>6/16/2022</b>	Page <b>1</b>	of <b>1</b>
Township <b>51N</b>	Range <b>37W</b>	Section(s) and Subdivision(s) <b>Sec 24 - S1/2SW; Sec 25 - NW, NWSW, E1/2SE</b>		Scale <b>1:15,840</b>		

Cover Type				Density	
A = Aspen	H = Hemlock	N = Marsh	U = Upland Brush	0 = Non Stocked	5 = Pole Timber Medium
B = Paper Birch	J = Jack Pine	O = Oak	UM = Upland Mixed	1 = Seedling Sapling Poor	6 = Pole Timber Well
C = Cedar	L = Lowland Brush	P = Lowland Poplar	V = Bog or Marsh	2 = Seedling Sapling Medium	7 = Saw Timber Poor
D = Treed Bog	LM = Lowland Mixed	Q = Mixed Swamp Conifer	W = White Pine	3 = Seedling Sapling Well	8 = Saw Timber Medium
E = Swamp Hdwoods	M = Mpl, Bch, Brch	R = Red Pine	X = Non Stocked	4 = Pole Timber Poor	9 = Saw Timber Well
F = Spruce Fir	MC = Mixed Conifer	S = Black Spruce	Z = Water		
G = Grass	MD = Mixed Deciduous	T = Tamarack			



### Legend

- ◆ Survey Corners
- Secondary Forest Road
- == Forest Access Route
- - Gravel Road
- Private
- Perennial River
- Lakes and Rivers
- Against State (Red)
- Payment Unit (Red)
- Private Line (Blue)



Bear Bait 22					
Ontonagon County, Compartment 11064					
UNIT	1	2	3	4	TOTALS
ACRES	38.8	32.9	22.4	47.3	141.4
Sawlogs MBF					
Basswood	0.0	0.0	2.2	0.0	2.2
Red Maple	24.1	20.5	19.9	34.7	99.2
Sugar Maple	18.1	15.3	14.9	4.4	52.7
Yellow Birch	2.4	2.0	1.1	0.0	5.5
<b>TOTAL</b>	<b>44.6</b>	<b>37.8</b>	<b>38.1</b>	<b>39.1</b>	<b>159.6</b>
Pulpwood CORDS					
Balsam Fir	6	5	12	0	23
Basswood	0	0	2	0	2
Mixed Hardwood	224	190	359	344	1117
<b>TOTAL</b>	<b>230</b>	<b>195</b>	<b>373</b>	<b>344</b>	<b>1142</b>

