



TIMBER SALE MAP

This information provided by authority of Part 525, 1994 PA 451, as amended.

Forest Management Unit Baraga		County Baraga	Mapped By Ryan Mattila	Date 8/26/2021	Page 1	of 1
Township 53N	Range 31W	Section(s) and Subdivision(s) See map below		Scale 1:15,840		
Cruised By Baraga Staff						

Cover Type

A = Aspen	H = Hemlock	N = Marsh	U = Upland Brush
B = Paper Birch	J = Jack Pine	O = Oak	UM = Upland Mixed
C = Cedar	L = Lowland Brush	P = Lowland Poplar	V = Bog or Marsh
D = Treed Bog	LM = Lowland Mixed	Q = Mixed Swamp Conifer	W = White Pine
E = Swamp Hdwoods	M = Mpl, Bch, Brch	R = Red Pine	X = Non Stocked
F = Spruce Fir	MC = Mixed Conifer	S = Black Spruce	Z = Water
G = Grass	MD = Mixed Deciduous	T = Tamarack	

Density

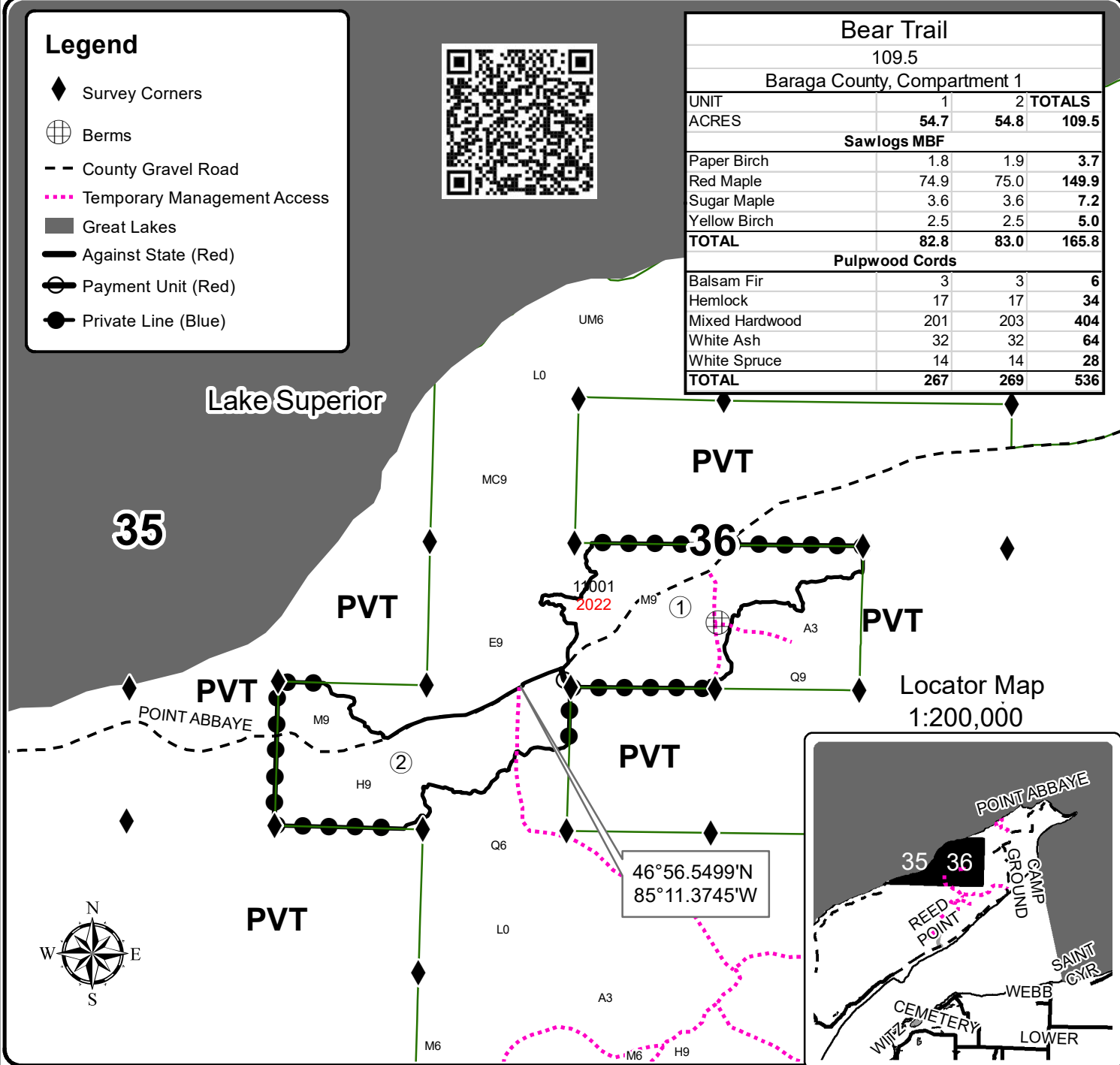
0 = Non Stocked	5 = Pole Timber Medium
1 = Seedling Sapling Poor	6 = Pole Timber Well
2 = Seedling Sapling Medium	7 = Saw Timber Poor
3 = Seedling Sapling Well	8 = Saw Timber Medium
4 = Pole Timber Poor	9 = Saw Timber Well

Legend

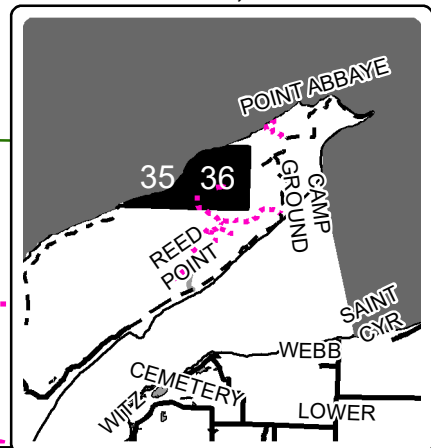
- ◆ Survey Corners
- ⊕ Berms
- - County Gravel Road
- ⋯ Temporary Management Access
- Great Lakes
- Against State (Red)
- ⊖ Payment Unit (Red)
- Private Line (Blue)



Bear Trail			
109.5			
Baraga County, Compartment 1			
UNIT	1	2	TOTALS
ACRES	54.7	54.8	109.5
Sawlogs MBF			
Paper Birch	1.8	1.9	3.7
Red Maple	74.9	75.0	149.9
Sugar Maple	3.6	3.6	7.2
Yellow Birch	2.5	2.5	5.0
TOTAL	82.8	83.0	165.8
Pulpwood Cords			
Balsam Fir	3	3	6
Hemlock	17	17	34
Mixed Hardwood	201	203	404
White Ash	32	32	64
White Spruce	14	14	28
TOTAL	267	269	536



Locator Map
1:200,000



46°56.5499'N
85°11.3745'W

