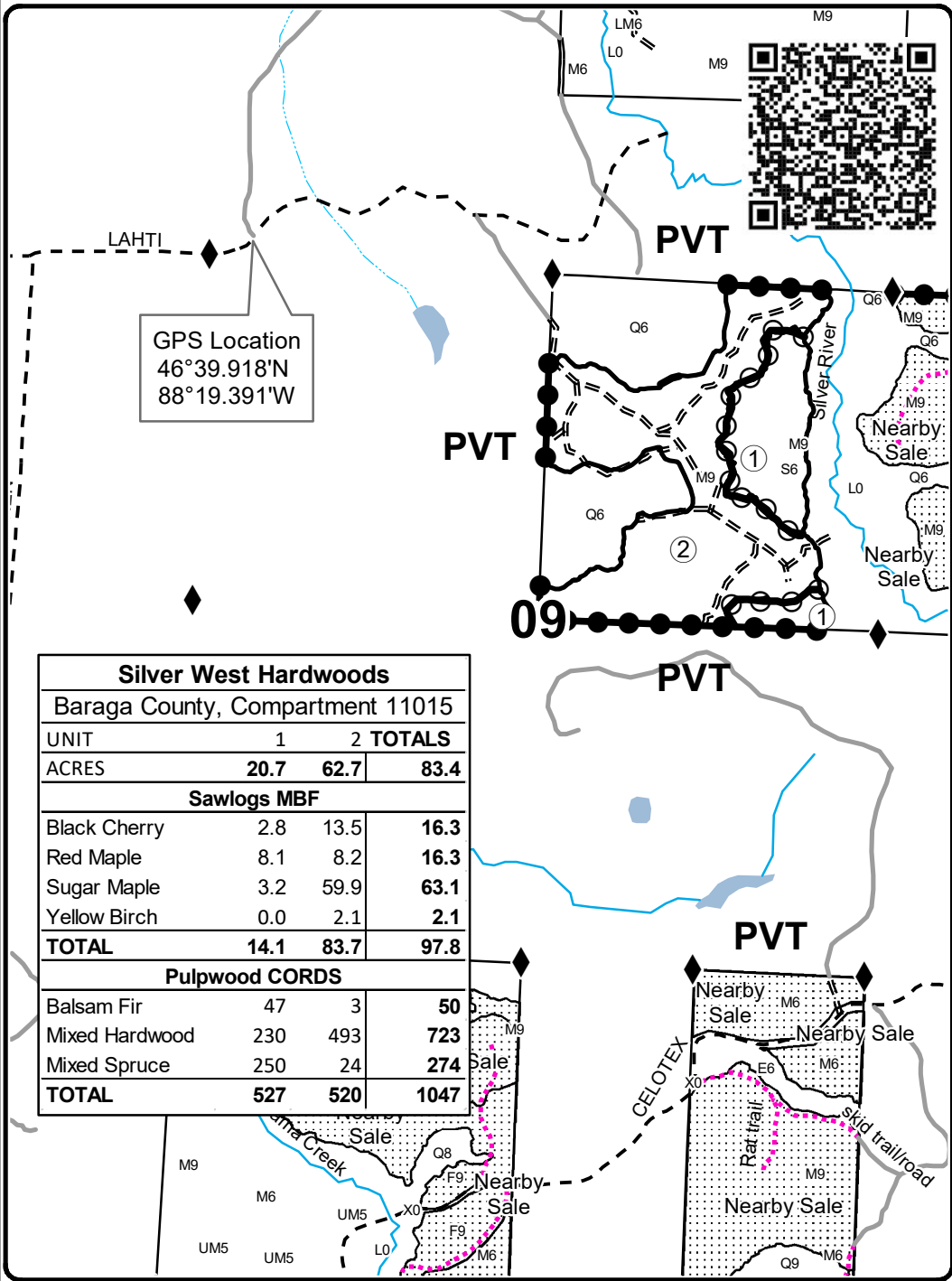




TIMBER SALE MAP

This information provided by authority of Part 525, 1994 PA 451, as amended.

Forest Management Unit Baraga		County Baraga	Mapped By Carlson	Date 7/28/2022	Page 1	of 1
Township 49N	Range 32W	Section(s) and Subdivision(s) Section 9 - NE 1/4		Scale 1:15,840		
Cover Type			Density			
A = Aspen	H = Hemlock	N = Marsh	U = Upland Brush	0 = Non Stocked	5 = Pole Timber Medium	
B = Paper Birch	J = Jack Pine	O = Oak	UM = Upland Mixed	1 = Seedling Sapling Poor	6 = Pole Timber Well	
C = Cedar	L = Lowland Brush	P = Lowland Poplar	V = Bog or Marsh	2 = Seedling Sapling Medium	7 = Saw Timber Poor	
D = Treed Bog	LM = Lowland Mixed	Q = Mixed Swamp Conifer	W = White Pine	3 = Seedling Sapling Well	8 = Saw Timber Medium	
E = Swamp Hdwoods	M = Mpl, Bch, Brch	R = Red Pine	X = Non Stocked	4 = Pole Timber Poor	9 = Saw Timber Well	
F = Spruce Fir	MC = Mixed Conifer	S = Black Spruce	Z = Water			
G = Grass	MD = Mixed Deciduous	T = Tamarack				



Legend

- ◆ Survey Corners
- Secondary Forest Road
- - Forest Access Route
- - - Gravel Road
- Private Road
- ◆ Temporary Management Access
- ⋯ Intermittent Stream
- Perennial River
- Lakes and Rivers
- Against State (Red)
- Payment Unit (Red)
- Private Line (Blue)
- ▤ Nearby Timber Sales

Silver West Hardwoods			
Baraga County, Compartment 11015			
UNIT	1	2	TOTALS
ACRES	20.7	62.7	83.4
Sawlogs MBF			
Black Cherry	2.8	13.5	16.3
Red Maple	8.1	8.2	16.3
Sugar Maple	3.2	59.9	63.1
Yellow Birch	0.0	2.1	2.1
TOTAL	14.1	83.7	97.8
Pulpwood CORDS			
Balsam Fir	47	3	50
Mixed Hardwood	230	493	723
Mixed Spruce	250	24	274
TOTAL	527	520	1047

