



# TIMBER SALE MAP

This information provided by authority of Part 525, 1994 PA 451, as amended.

Forest Management Unit Baraga Management Unit		County Houghton	Mapped By Ryan Mattila	Date 6/26/2023	Page 1	of 1
Township 51N and 52N	Range 35W	Section(s) and Subdivision(s) See Map Below			Scale 1:15,840	

### Cover Type

A = Aspen	H = Hemlock	N = Marsh	U = Upland Brush
B = Paper Birch	J = Jack Pine	O = Oak	UM = Upland Mixed
C = Cedar	L = Lowland Brush	P = Lowland Poplar	V = Bog or Marsh
D = Treed Bog	LM = Lowland Mixed	Q = Mixed Swamp Conifer	W = White Pine
E = Swamp Hdwoods	M = Mpl, Bch, Brch	R = Red Pine	X = Non Stocked
F = Spruce Fir	MC = Mixed Conifer	S = Black Spruce	Z = Water
G = Grass	MD = Mixed Deciduous	T = Tamarack	

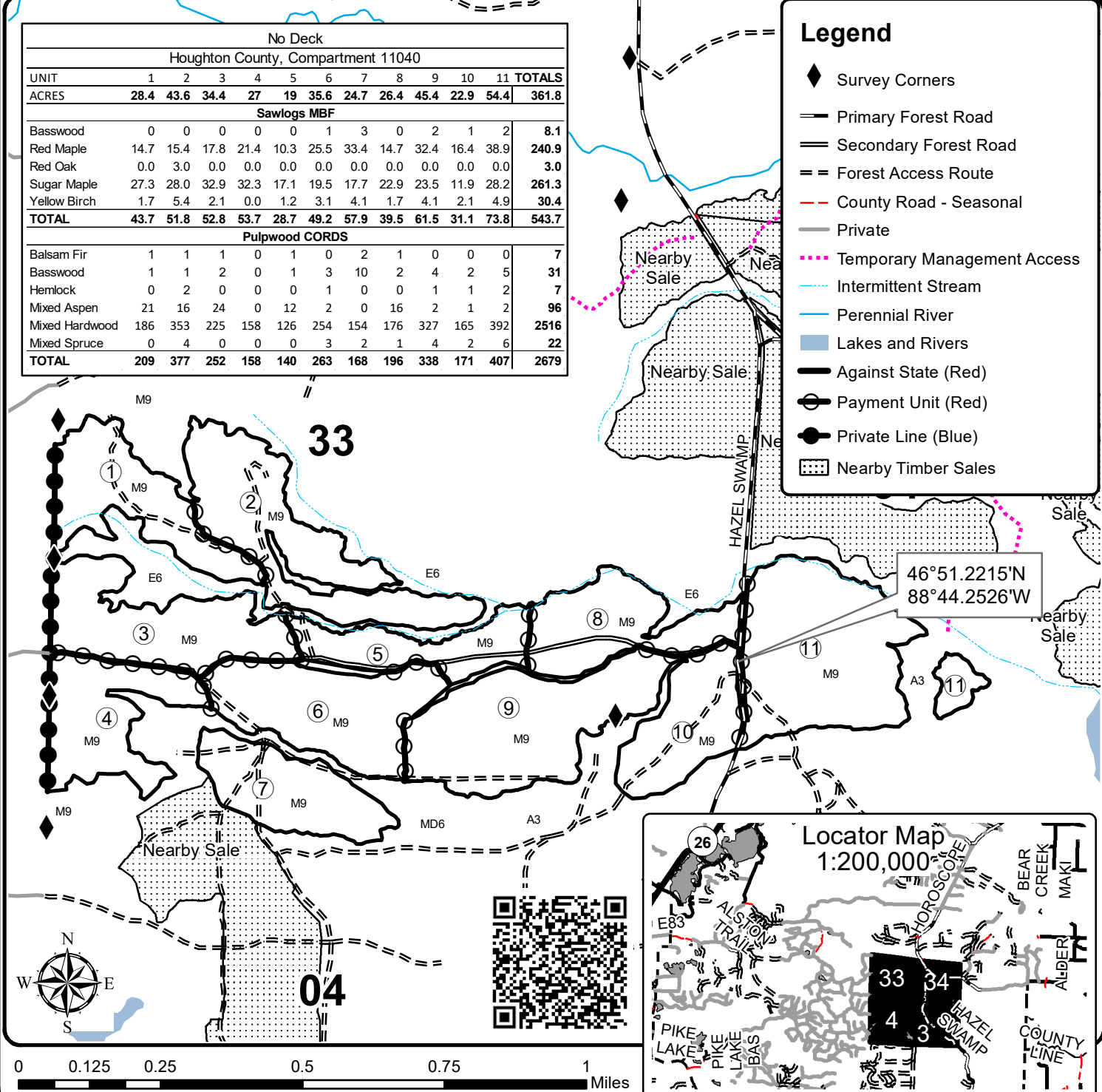
### Density

0 = Non Stocked	5 = Pole Timber Medium
1 = Seedling Sapling Poor	6 = Pole Timber Well
2 = Seedling Sapling Medium	7 = Saw Timber Poor
3 = Seedling Sapling Well	8 = Saw Timber Medium
4 = Pole Timber Poor	9 = Saw Timber Well

No Deck												
Houghton County, Compartment 11040												
UNIT	1	2	3	4	5	6	7	8	9	10	11	TOTALS
ACRES	28.4	43.6	34.4	27	19	35.6	24.7	26.4	45.4	22.9	54.4	361.8
<b>Sawlogs MBF</b>												
Basswood	0	0	0	0	0	1	3	0	2	1	2	8.1
Red Maple	14.7	15.4	17.8	21.4	10.3	25.5	33.4	14.7	32.4	16.4	38.9	240.9
Red Oak	0.0	3.0	0.0	0.0	0.0	0.0	0.0	0.0	0.0	0.0	0.0	3.0
Sugar Maple	27.3	28.0	32.9	32.3	17.1	19.5	17.7	22.9	23.5	11.9	28.2	261.3
Yellow Birch	1.7	5.4	2.1	0.0	1.2	3.1	4.1	1.7	4.1	2.1	4.9	30.4
<b>TOTAL</b>	<b>43.7</b>	<b>51.8</b>	<b>52.8</b>	<b>53.7</b>	<b>28.7</b>	<b>49.2</b>	<b>57.9</b>	<b>39.5</b>	<b>61.5</b>	<b>31.1</b>	<b>73.8</b>	<b>543.7</b>
<b>Pulpwood CORDS</b>												
Balsam Fir	1	1	1	0	1	0	2	1	0	0	0	7
Basswood	1	1	2	0	1	3	10	2	4	2	5	31
Hemlock	0	2	0	0	0	1	0	0	1	1	2	7
Mixed Aspen	21	16	24	0	12	2	0	16	2	1	2	96
Mixed Hardwood	186	353	225	158	126	254	154	176	327	165	392	2516
Mixed Spruce	0	4	0	0	0	3	2	1	4	2	6	22
<b>TOTAL</b>	<b>209</b>	<b>377</b>	<b>252</b>	<b>158</b>	<b>140</b>	<b>263</b>	<b>168</b>	<b>196</b>	<b>338</b>	<b>171</b>	<b>407</b>	<b>2679</b>

### Legend

- ◆ Survey Corners
- Primary Forest Road
- Secondary Forest Road
- - Forest Access Route
- - - County Road - Seasonal
- Private
- ⋯ Temporary Management Access
- ⋯ Intermittent Stream
- Perennial River
- Lakes and Rivers
- Against State (Red)
- Payment Unit (Red)
- Private Line (Blue)
- ▨ Nearby Timber Sales



46°51.2215'N  
88°44.2526'W

