



TIMBER SALE MAP

This information provided by authority of Part 525, 1994 PA 451, as amended.

Forest Management Unit Baraga Management Unit		County Houghton	Mapped By Ryan Mattila	Date 8/11/2023	Page 1	of 1
Township 51N	Range 36W	Section(s) and Subdivision(s) See Map Below		Scale 1:24,000		
Cruised By Baraga Staff						

Cover Type

A = Aspen	H = Hemlock	N = Marsh	U = Upland Brush
B = Paper Birch	J = Jack Pine	O = Oak	UM = Upland Mixed
C = Cedar	L = Lowland Brush	P = Lowland Poplar	V = Bog or Marsh
D = Treed Bog	LM = Lowland Mixed	Q = Mixed Swamp Conifer	W = White Pine
E = Swamp Hdwoods	M = Mpl, Bch, Brch	R = Red Pine	X = Non Stocked
F = Spruce Fir	MC = Mixed Conifer	S = Black Spruce	Z = Water
G = Grass	MD = Mixed Deciduous	T = Tamarack	

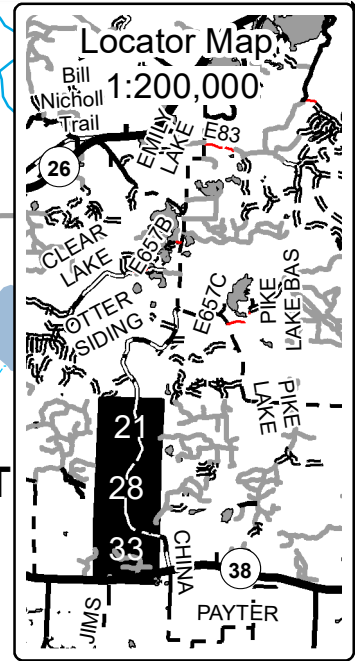
Density

0 = Non Stocked	5 = Pole Timber Medium
1 = Seedling Sapling Poor	6 = Pole Timber Well
2 = Seedling Sapling Medium	7 = Saw Timber Poor
3 = Seedling Sapling Well	8 = Saw Timber Medium
4 = Pole Timber Poor	9 = Saw Timber Well

Legend

- Against State (Red)
- Payment Unit (Red)
- Private Line (Blue)
- Survey Corners
- Highways
- Primary Forest Road
- Secondary Forest Road
- Forest Access Route
- Paved Road
- Gravel Road
- Private
- Temporary Management Access
- Intermittent Stream
- Perennial River
- Lakes and Rivers

46°47.5959'N
88°52.6858'W



Under Over								
Houghton County, Compartment 11048								
UNIT	1	2	3	4	5	6	7	8 TOTALS
ACRES	34.6	42.4	33.3	68.5	55.2	38.3	46.3	19.4 338.0
Sawlogs MBF								
Basswood	0.0	0.0	0.0	19.6	0.0	3.9	4.8	0.0 28.3
Black Cherry	2.4	0.0	3.5	0.0	0.0	2.3	2.8	0.0 11.0
Red Maple	24.3	52.9	14.1	20.8	32.0	8.2	10.0	4.3 166.6
Red Oak	0.0	0.0	0.0	1.3	0.0	0.0	0.0	0.0 1.3
Sugar Maple	4.6	0.0	47.9	15.7	30.7	24.2	29.3	4.0 156.4
Yellow Birch	2.9	3.0	0.0	6.4	0.0	0.8	1.0	0.0 14.1
TOTAL	34.2	55.9	65.5	63.8	62.7	39.4	47.9	8.3 377.7
Pulpwood CORDS								
Balsam Fir	66	118	0	17	6	0	0	3 210
Basswood	0	0	0	37	0	5	7	0 49
Mixed Aspen	0	55	0	0	0	0	0	0 55
Mixed Hardwood	613	598	288	332	323	244	295	195 2888
Mixed Spruce	95	142	15	0	0	9	10	4 275
TOTAL	774	913	303	386	329	258	312	202 3477

