



TIMBER SALE MAP

This information provided by authority of Part 525, 1994 PA 451, as amended.

Sale Number 11-810-24	Date 07/22/2024
Scale 1:15,840	Page 1
	Of 1

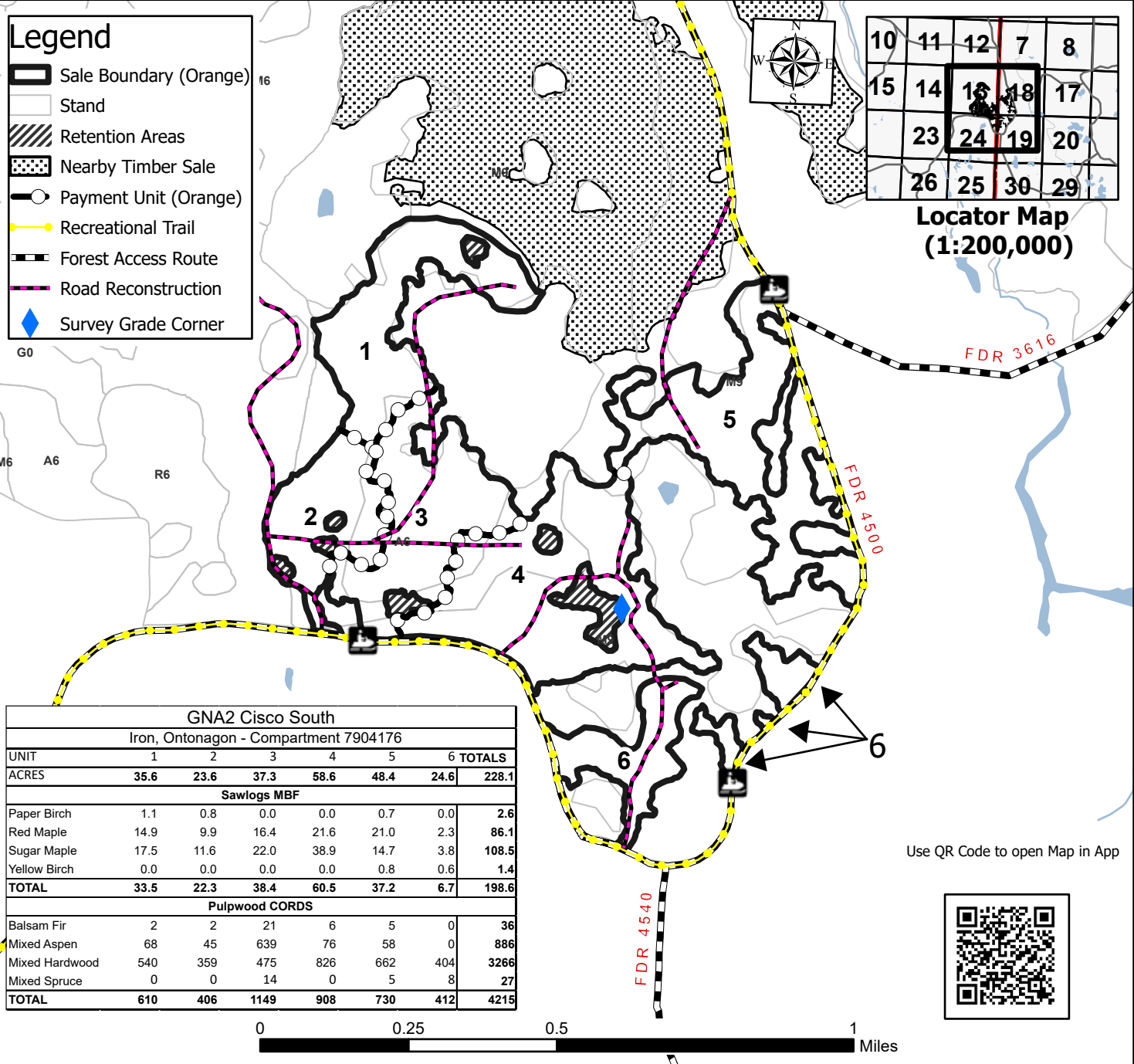
Forest Management Unit Baraga Mgt Unit	County Ontonagon	Mapped By: Sullivan Cruised By: Baraga Staff
--	----------------------------	---

Township 46N	Range 37W /	Section(s) and Subdivision(s) NENW,N1/2NE,SENE; Sec. 13 S1/2NE,E1/2SW,SE; Sec. 18 S1/2NW,SW; Sec. 19 N1/2NW,SWNW; Sec. 24
------------------------	-----------------------	--

Cover Type			
A = Aspen	J = Jack Pine	O = Oak	U = Upland Brush
B = Paper Birch	K = Rock	P = Lowland Poplar	UM = Upland Mix Forest
C = Cedar	L = Lowland Brush	Q = Mixed Swamp Conifer	V = Bog or Marsh
D = Treed Bog	LM = Lowland Mix Forest	R = Red Pine	W = White Pine
E = Swamp Hardwoods	M = Maple, Beech, Birch	S = Black Spruce	X = Non Stocked
F = Spruce/Fir	MC = Mixed Conifer	T = Tamarack	Y = Sand
G = Grass	MD = Mixed Deciduous	Z = Water	
H = Hemlock	N = Marsh		

Density	
0 = Non Stocked	5 = Pole Timber Medium
1 = Seedling Sapling Poor	6 = Pole Timber Well
2 = Seedling Sapling Medium	7 = Saw Timber Poor
3 = Seedling Sapling Well	8 = Saw Timber Medium
4 = Pole Timber Poor	9 = Saw Timber Well

Legend	
	Sale Boundary (Orange)
	Stand
	Retention Areas
	Nearby Timber Sale
	Payment Unit (Orange)
	Recreational Trail
	Forest Access Route
	Road Reconstruction
	Survey Grade Corner



GNA2 Cisco South						
Iron, Ontonagon - Compartment 7904176						
UNIT	1	2	3	4	5	6 TOTALS
ACRES	35.6	23.6	37.3	58.6	48.4	24.6 228.1
Sawlogs MBF						
Paper Birch	1.1	0.8	0.0	0.0	0.7	0.0 2.6
Red Maple	14.9	9.9	16.4	21.6	21.0	2.3 86.1
Sugar Maple	17.5	11.6	22.0	38.9	14.7	3.8 108.5
Yellow Birch	0.0	0.0	0.0	0.0	0.8	0.6 1.4
TOTAL	33.5	22.3	38.4	60.5	37.2	6.7 198.6
Pulpwood CORDS						
Balsam Fir	2	2	21	6	5	0 36
Mixed Aspen	68	45	639	76	58	0 886
Mixed Hardwood	540	359	475	826	662	404 3266
Mixed Spruce	0	0	14	0	5	8 27
TOTAL	610	406	1149	908	730	412 4215

Use QR Code to open Map in App

