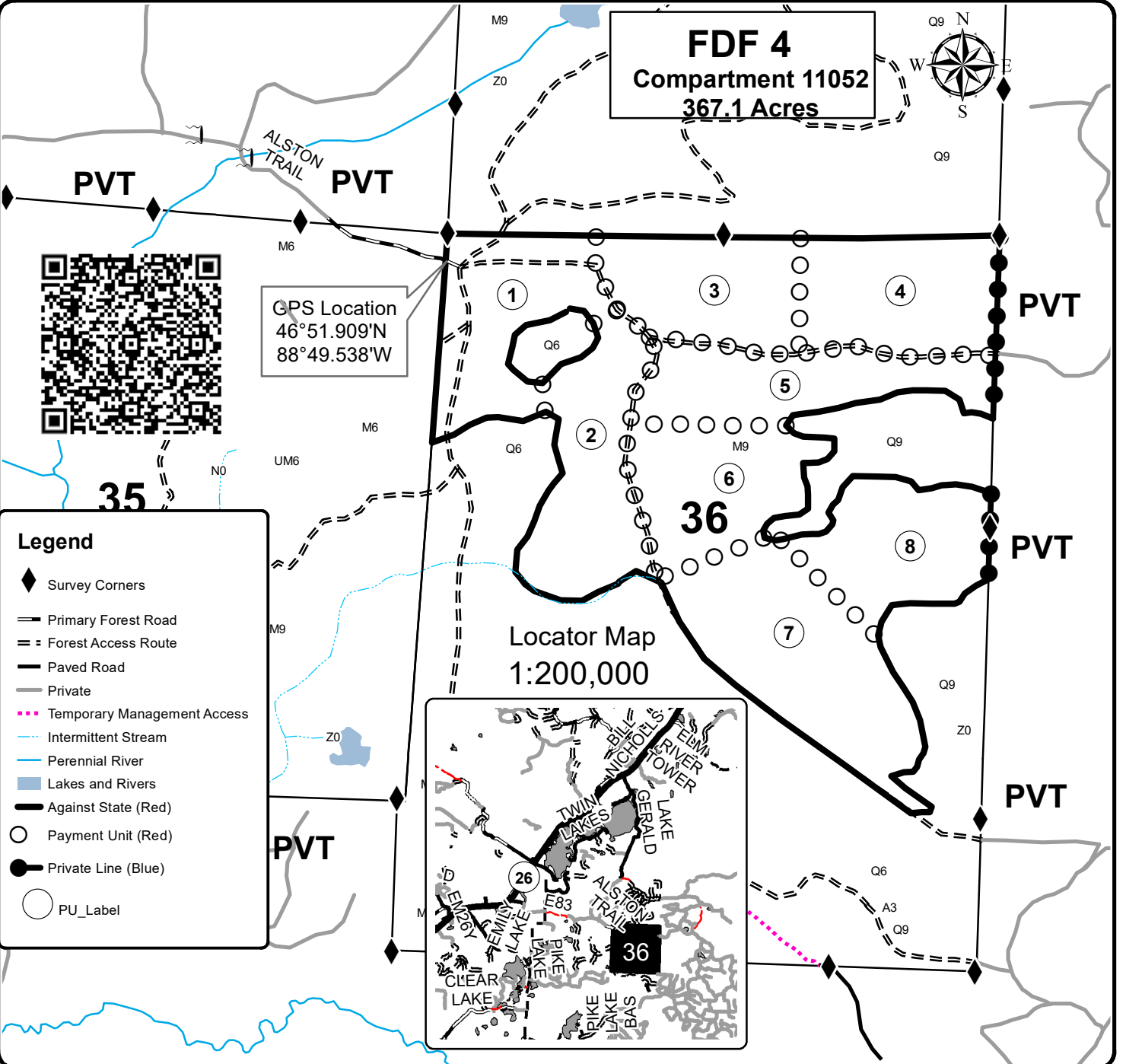




TIMBER SALE MAP

This information provided by authority of Part 525, 1994 PA 451, as amended.

Forest Management Unit Baraga		County Houghton	Mapped By Carlson	Date 3/28/2023	Page 1	of 1
Township 52N	Range 36W	Section(s) and Subdivision(s) Sec 36 - N1/2, SE1/4, N1/2SW		Scale 1:15,840		
Cover Type			Density			
A = Aspen	H = Hemlock	N = Marsh	U = Upland Brush	0 = Non Stocked	5 = Pole Timber Medium	
B = Paper Birch	J = Jack Pine	O = Oak	UM = Upland Mixed	1 = Seedling Sapling Poor	6 = Pole Timber Well	
C = Cedar	L = Lowland Brush	P = Lowland Poplar	V = Bog or Marsh	2 = Seedling Sapling Medium	7 = Saw Timber Poor	
D = Treed Bog	LM = Lowland Mixed	Q = Mixed Swamp Conifer	W = White Pine	3 = Seedling Sapling Well	8 = Saw Timber Medium	
E = Swamp Hdwoods	M = Mpl, Bch, Brch	R = Red Pine	X = Non Stocked	4 = Pole Timber Poor	9 = Saw Timber Well	
F = Spruce Fir	MC = Mixed Conifer	S = Black Spruce	Z = Water			
G = Grass	MD = Mixed Deciduous	T = Tamarack				



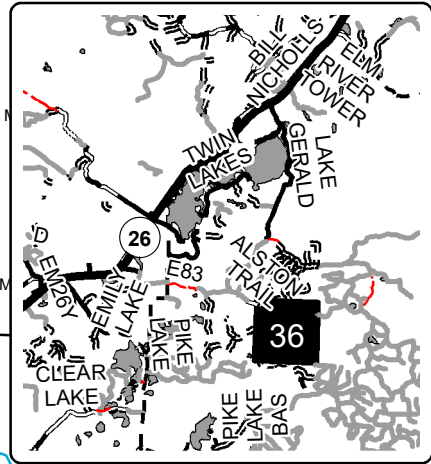
GPS Location
 46°51.909'N
 88°49.538'W

FDF 4
Compartment 11052
367.1 Acres



Legend

- ◆ Survey Corners
- Primary Forest Road
- == Forest Access Route
- Paved Road
- Private
- ... Temporary Management Access
- ... Intermittent Stream
- ... Perennial River
- ... Lakes and Rivers
- Against State (Red)
- Payment Unit (Red)
- Private Line (Blue)
- PU_Label



Locator Map
 1:200,000

