



TIMBER SALE MAP

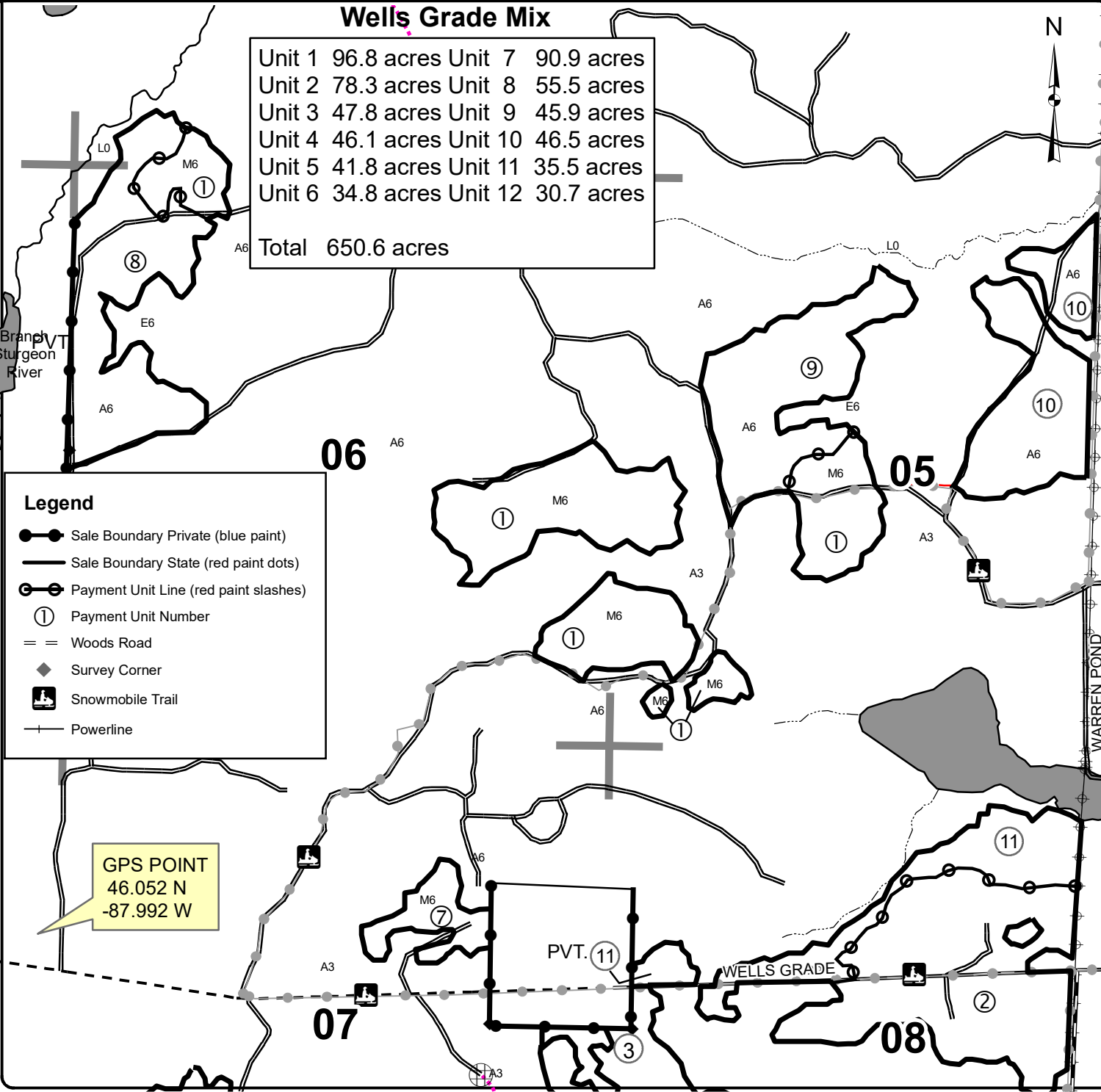
This information provided by authority of Part 525, 1994 PA 451, as amended.

Forest Management Unit Escanaba		County Dickinson	Mapped By Scott Sebero	Date 08/28/2023	Page 1	of 2
Township 42N & 43N	Range 29W	Section(s) and Subdivision(s)	Cruised By Scott Sebero	Scale 4 inches = 1 mile		

Cover Type				Density	
A = Aspen	H = Hemlock	N = Marsh	U = Upland Brush	0 = Non Stocked	5 = Pole Timber Medium
B = Paper Birch	J = Jack Pine	O = Oak	UM = Upland Mixed	1 = Seedling Sapling Poor	6 = Pole Timber Well
C = Cedar	L = Lowland Brush	P = Lowland Poplar	V = Bog or Marsh	2 = Seedling Sapling Medium	7 = Saw Timber Poor
D = Treed Bog	LM = Lowland Mixed	Q = Mixed Swamp Conifer	W = White Pine	3 = Seedling Sapling Well	8 = Saw Timber Medium
E = Swamp Hdwoods	M = Mpl, Bch, Brch	R = Red Pine	X = Non Stocked	4 = Pole Timber Poor	9 = Saw Timber Well
F = Spruce Fir	MC = Mixed Conifer	S = Black Spruce	Z = Water		
G = Grass	MD = Mixed Deciduous	T = Tamarack			

Wells Grade Mix

Unit 1	96.8 acres	Unit 7	90.9 acres
Unit 2	78.3 acres	Unit 8	55.5 acres
Unit 3	47.8 acres	Unit 9	45.9 acres
Unit 4	46.1 acres	Unit 10	46.5 acres
Unit 5	41.8 acres	Unit 11	35.5 acres
Unit 6	34.8 acres	Unit 12	30.7 acres
Total		650.6 acres	



Legend

- Sale Boundary Private (blue paint)
- Sale Boundary State (red paint dots)
- /— Payment Unit Line (red paint slashes)
- ① Payment Unit Number
- == Woods Road
- ◆ Survey Corner
- ⊞ Snowmobile Trail
- +— Powerline

GPS POINT
46.052 N
-87.992 W