



# TIMBER SALE MAP

This information provided by authority of Part 525, 1994 PA 451, as amended.

Forest Management Unit Escanaba Management Unit	County Menominee County	Mapped By Beaudo	Date 5/23/2018	Page 1	of 1
Township 35N	Range 28W	Section(s) and Subdivision(s) Sec 10 - NENE, NENW, NESE, NESW, NWSE, NWSW, SENE, SENW, SESE, SESW, SWNE, SWSE, SWSW	Scale 1:15,840		

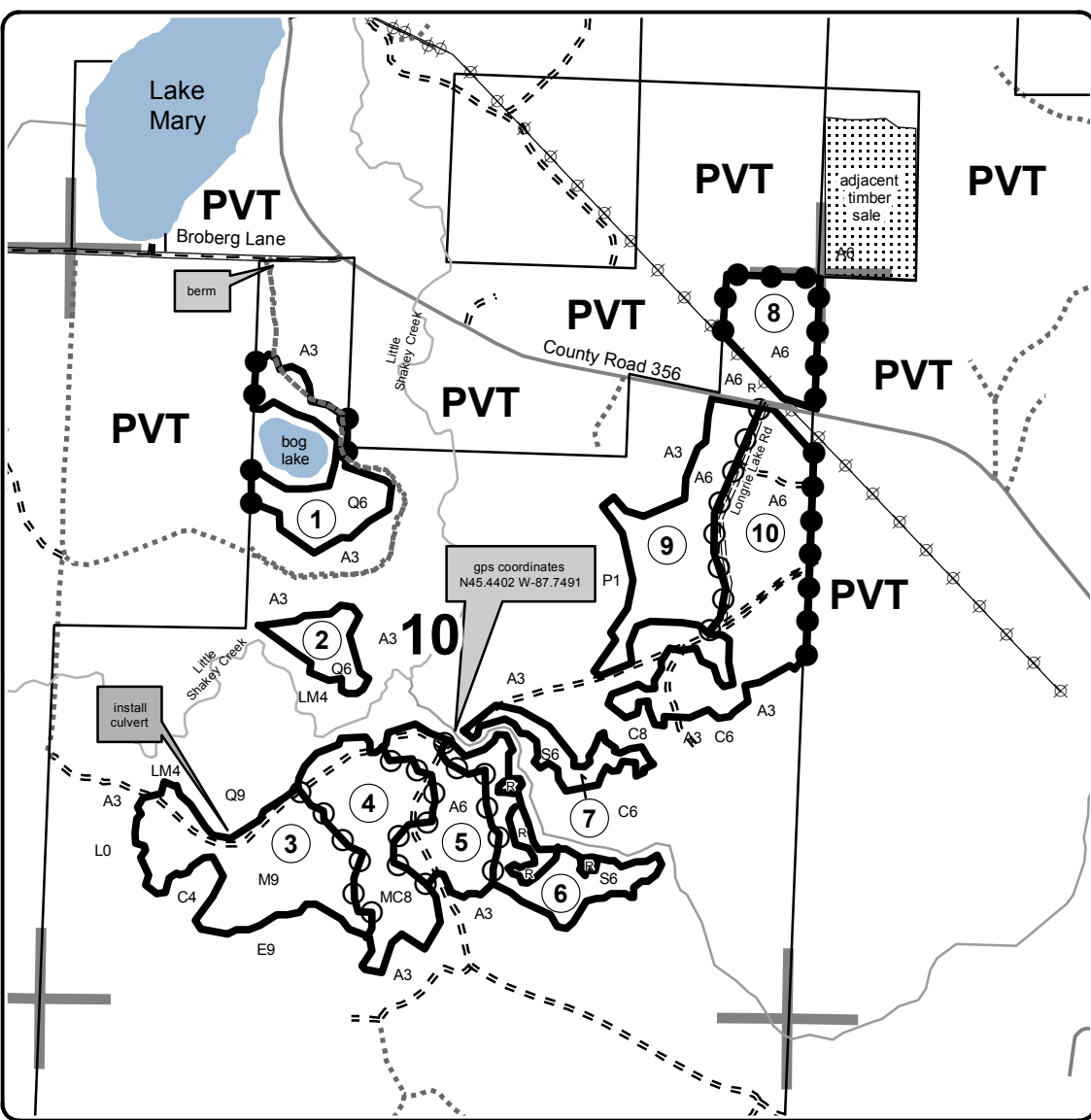
Cover Type				Density	
A = Aspen	H = Hemlock	N = Marsh	U = Upland Brush	0 = Non Stocked	5 = Pole Timber Medium
B = Paper Birch	J = Jack Pine	O = Oak	UM = Upland Mixed	1 = Seedling Sapling Poor	6 = Pole Timber Well
C = Cedar	L = Lowland Brush	P = Lowland Poplar	V = Bog or Marsh	2 = Seedling Sapling Medium	7 = Saw Timber Poor
D = Treed Bog	LM = Lowland Mixed	Q = Mixed Swamp Conifer	W = White Pine	3 = Seedling Sapling Well	8 = Saw Timber Medium
E = Swamp Hdwoods	M = Mpl, Bch, Brch	R = Red Pine	X = Non Stocked	4 = Pole Timber Poor	9 = Saw Timber Well
F = Spruce Fir	MC = Mixed Conifer	S = Black Spruce	Z = Water		
G = Grass	MD = Mixed Deciduous	T = Tamarack			

PU	Acres	PU	Acres
1	11.4	6	12.0
2	5.3	7	5.3
3	23.3	8	10.8
4	18.9	9	19.3
5	12.8	10	29.9

**Fenced Beets SBW**  
**Compartment 21**  
**149 Acres**




QR Code opens map in PDF Maps App



**Legend**

- Against State (Red)
- Payment Unit (Yellow)
- Private Line (Blue)
- Section Corner
- 10 Section Number
- Paved Roads
- Gravel Roads
- == Poor Dirt Roads
- ... Closed
- ⊕ Powerline
- PVT Private Property
- ① Payment Unit
- ~ Creek/Drainage
- R Retention Patch

