



TIMBER SALE MAP

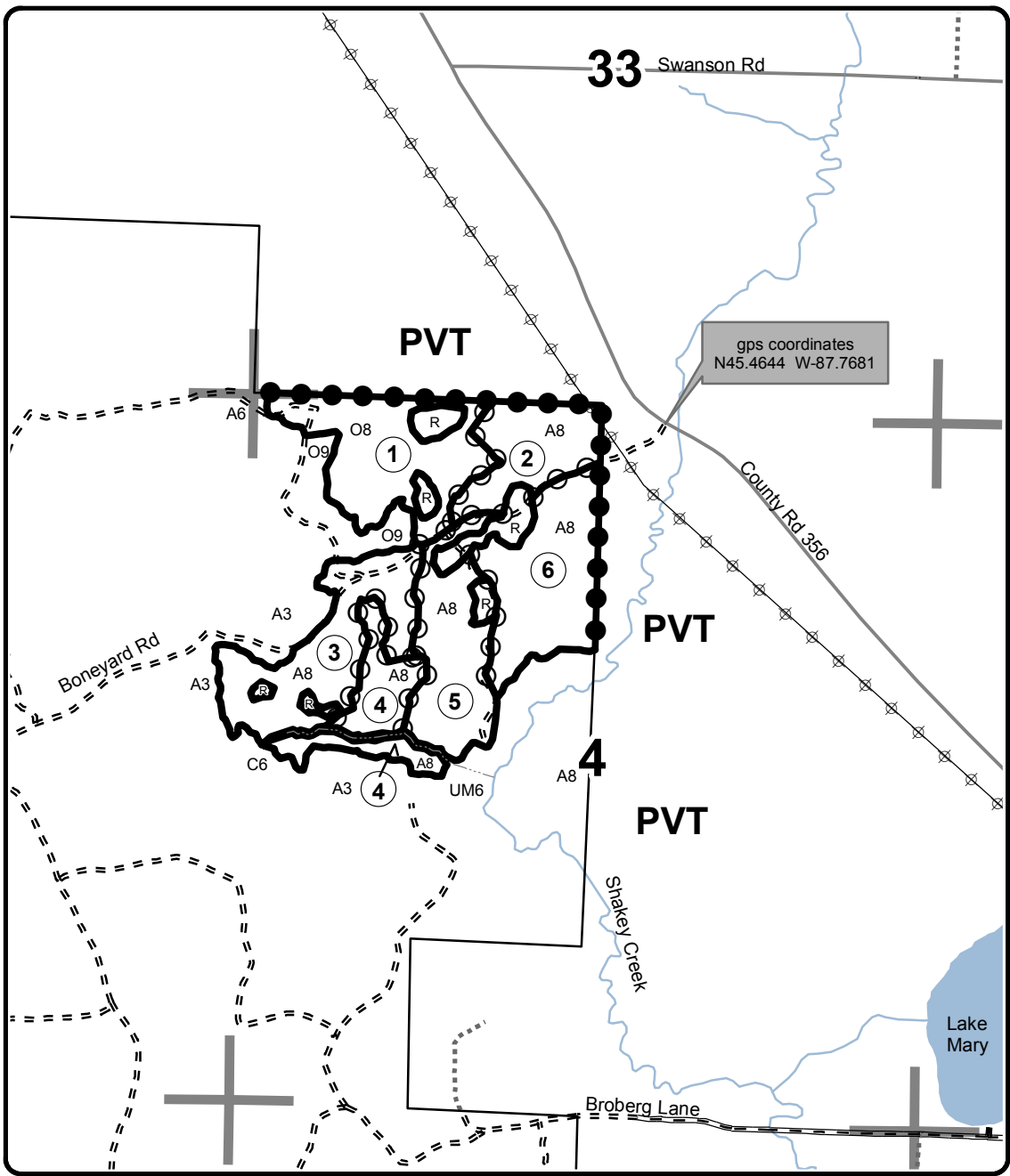
This information provided by authority of Part 525, 1994 PA 451, as amended.

Forest Management Unit Escanaba Management Unit	County Menominee County	Mapped By Beaudo	Date 1/11/2018	Page 1	of 1
Township 35N	Range 28W	Section(s) and Subdivision(s) Sec 4 - NENW, NESW, NWNW, NWSW, SENW, SWNW; Sec 5 - SENE.	Scale 1:15,840		

Cover Type				Density	
A = Aspen	H = Hemlock	N = Marsh	U = Upland Brush	0 = Non Stocked	5 = Pole Timber Medium
B = Paper Birch	J = Jack Pine	O = Oak	UM = Upland Mixed	1 = Seedling Sapling Poor	6 = Pole Timber Well
C = Cedar	L = Lowland Brush	P = Lowland Poplar	V = Bog or Marsh	2 = Seedling Sapling Medium	7 = Saw Timber Poor
D = Treed Bog	LM = Lowland Mixed	Q = Mixed Swamp Conifer	W = White Pine	3 = Seedling Sapling Well	8 = Saw Timber Medium
E = Swamp Hdwoods	M = Mpl, Bch, Brch	R = Red Pine	X = Non Stocked	4 = Pole Timber Poor	9 = Saw Timber Well
F = Spruce Fir	MC = Mixed Conifer	S = Black Spruce	Z = Water		
G = Grass	MD = Mixed Deciduous	T = Tamarack			

PU	Acres	PU	Acres
1	24.4	4	13.2
2	14.4	5	19.9
3	24.3	6	23.4

Boneyard Bonanza
 Compartment 22
 119.6 Acres



Legend

- Against State (Red)
- Payment Unit (Yellow)
- Private Line (Blue)
- Section Corners
- 4 Section Number
- Paved Roads
- Gravel Roads
- Poor Dirt Roads
- Closed
- ① Payment Unit
- PVT Private Property
- ~ Creek/Drainage
- R Retention Patch
- ⊕ Transmission Line

Locator Map
1:200,000

