



# TIMBER SALE MAP

This information provided by authority of Part 525, 1994 PA 451, as amended.

|  |              |  |                     |                   |           |         |
|--|--------------|--|---------------------|-------------------|-----------|---------|
| Forest Management Unit<br>Escanaba Management Unit |              | County<br>Menominee County   | Mapped By<br>Beaudo | Date<br>6/18/2018 | Page<br>1 | of<br>1 |
| Township<br>34N<br>35N                             | Range<br>29W | Section(s) and Subdivision(s)<br>34N: Sec 1 - SWSW; Sec 2 - NENE, NWNE, SESE, SWSE;<br>Sec 11 - NENE; Sec 12 NENW, NWNE, NWNW. 35N: Sec 35 - SWSE. |                     | Scale<br>1:15,840 |           |         |

## Cover Type

## Density

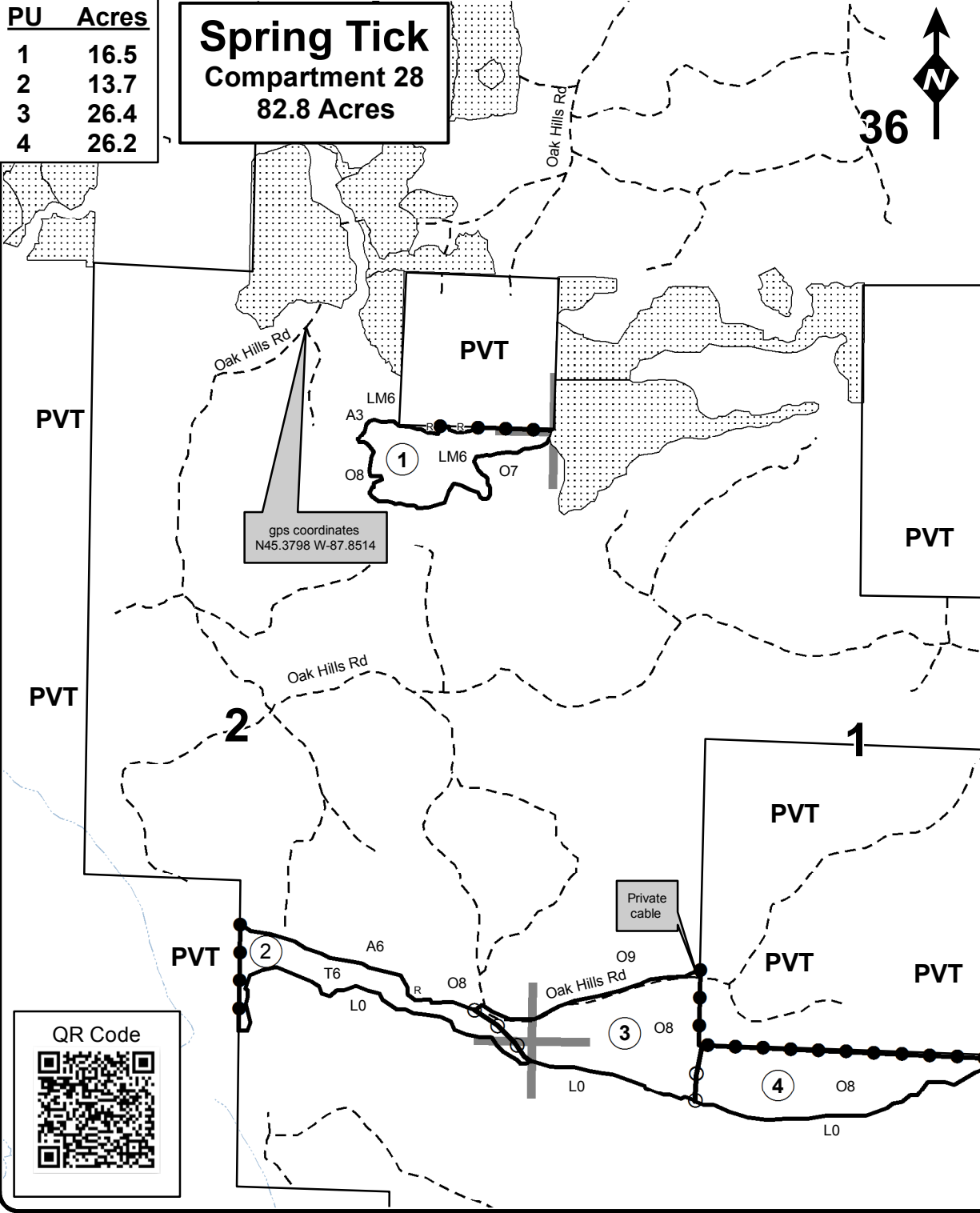
|                   |                      |                         |                   |                             |                        |
|-------------------|----------------------|-------------------------|-------------------|-----------------------------|------------------------|
| A = Aspen         | H = Hemlock          | N = Marsh               | U = Upland Brush  | 0 = Non Stocked             | 5 = Pole Timber Medium |
| B = Paper Birch   | J = Jack Pine        | O = Oak                 | UM = Upland Mixed | 1 = Seedling Sapling Poor   | 6 = Pole Timber Well   |
| C = Cedar         | L = Lowland Brush    | P = Lowland Poplar      | V = Bog or Marsh  | 2 = Seedling Sapling Medium | 7 = Saw Timber Poor    |
| D = Treed Bog     | LM = Lowland Mixed   | Q = Mixed Swamp Conifer | W = White Pine    | 3 = Seedling Sapling Well   | 8 = Saw Timber Medium  |
| E = Swamp Hdwoods | M = Mpl, Bch, Brch   | R = Red Pine            | X = Non Stocked   | 4 = Pole Timber Poor        | 9 = Saw Timber Well    |
| F = Spruce Fir    | MC = Mixed Conifer   | S = Black Spruce        | Z = Water         |                             |                        |
| G = Grass         | MD = Mixed Deciduous | T = Tamarack            |                   |                             |                        |

| PU | Acres |
|----|-------|
| 1  | 16.5  |
| 2  | 13.7  |
| 3  | 26.4  |
| 4  | 26.2  |

**Spring Tick  
Compartment 28  
82.8 Acres**

### Legend

- Against State (Red)
- Payment Unit (Yellow)
- Private Line (Blue)
- == Gravel Road
- Two Tracked Road
- Section Corner
- 1 Section Number
- State Land Boundary
- ① Payment Unit
- PVT Private Property
- ▨ Adjacent Timber Sale
- R Retention Patch
- Stream/Creek/Drainage



gps coordinates  
N45.3798 W-87.8514

