



TIMBER SALE MAP

This information provided by authority of Part 525, 1994 PA 451, as amended.

Forest Management Unit Escanaba Management Unit		County Menominee County	Mapped By Beaudo	Date 9/17/2018	Page 1	of 1
Township 35N	Range 25W	Section(s) and Subdivision(s) Sec 5 - SWSE; Sec 8 - NW, W1/2NE, E1/2SW,SE; Sec 17 - NWNE		Scale 1:15,840		

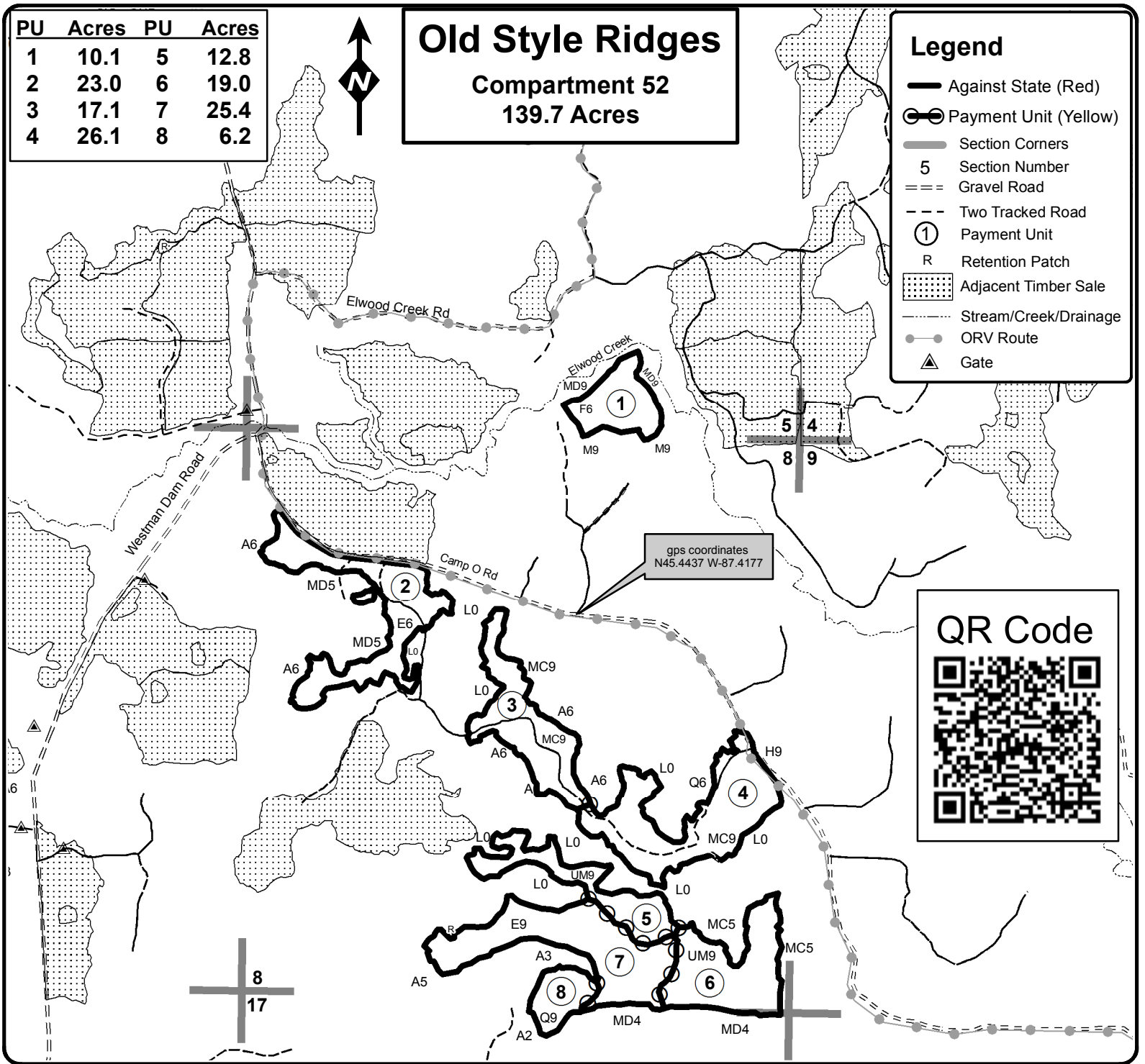
Cover Type				Density	
A = Aspen	H = Hemlock	N = Marsh	U = Upland Brush	0 = Non Stocked	5 = Pole Timber Medium
B = Paper Birch	J = Jack Pine	O = Oak	UM = Upland Mixed	1 = Seedling Sapling Poor	6 = Pole Timber Well
C = Cedar	L = Lowland Brush	P = Lowland Poplar	V = Bog or Marsh	2 = Seedling Sapling Medium	7 = Saw Timber Poor
D = Treed Bog	LM = Lowland Mixed	Q = Mixed Swamp Conifer	W = White Pine	3 = Seedling Sapling Well	8 = Saw Timber Medium
E = Swamp Hdwoods	M = Mpl, Bch, Brch	R = Red Pine	X = Non Stocked	4 = Pole Timber Poor	9 = Saw Timber Well
F = Spruce Fir	MC = Mixed Conifer	S = Black Spruce	Z = Water		
G = Grass	MD = Mixed Deciduous	T = Tamarack			

PU	Acres	PU	Acres
1	10.1	5	12.8
2	23.0	6	19.0
3	17.1	7	25.4
4	26.1	8	6.2

Old Style Ridges
Compartment 52
139.7 Acres

Legend

- Against State (Red)
- ⊙ Payment Unit (Yellow)
- Section Corners
- 5 Section Number
- == Gravel Road
- - - Two Tracked Road
- ① Payment Unit
- R Retention Patch
- ▨ Adjacent Timber Sale
- Stream/Creek/Drainage
- ORV Route
- ▲ Gate



QR Code

