



TIMBER SALE MAP

This information provided by authority of Part 525, 1994 PA 451, as amended.

Forest Management Unit Escanaba		County Menominee	Mapped By Racine	Date 7/12/2018	Page 1	of 1
Township 37N	Range 25,26 W	Section(s) and Subdivision(s) 37 25 19)SW1/4, W1/2SE 30) NW1/4, NWNE, NWSW 37 26 25) SENE, E1/2SE, NWSE		Scale 1:15,840		

Cover Type

A = Aspen	H = Hemlock	N = Marsh	U = Upland Brush
B = Paper Birch	J = Jack Pine	O = Oak	UM = Upland Mixed
C = Cedar	L = Lowland Brush	P = Lowland Poplar	V = Bog or Marsh
D = Treed Bog	LM = Lowland Mixed	Q = Mixed Swamp Conifer	W = White Pine
E = Swamp Hdwoods	M = Mpl, Bch, Brch	R = Red Pine	X = Non Stocked
F = Spruce Fir	MC = Mixed Conifer	S = Black Spruce	Z = Water
G = Grass	MD = Mixed Deciduous	T = Tamarack	

Density

0 = Non Stocked	5 = Pole Timber Medium
1 = Seedling Sapling Poor	6 = Pole Timber Well
2 = Seedling Sapling Medium	7 = Saw Timber Poor
3 = Seedling Sapling Well	8 = Saw Timber Medium
4 = Pole Timber Poor	9 = Saw Timber Well

PU	Acres	PU	Acres
1	26	6	49.8
2	30.1	7	14.1
3	30.8	8	24.1
4	42.8	9	26.2
5	25.6	10	28.4

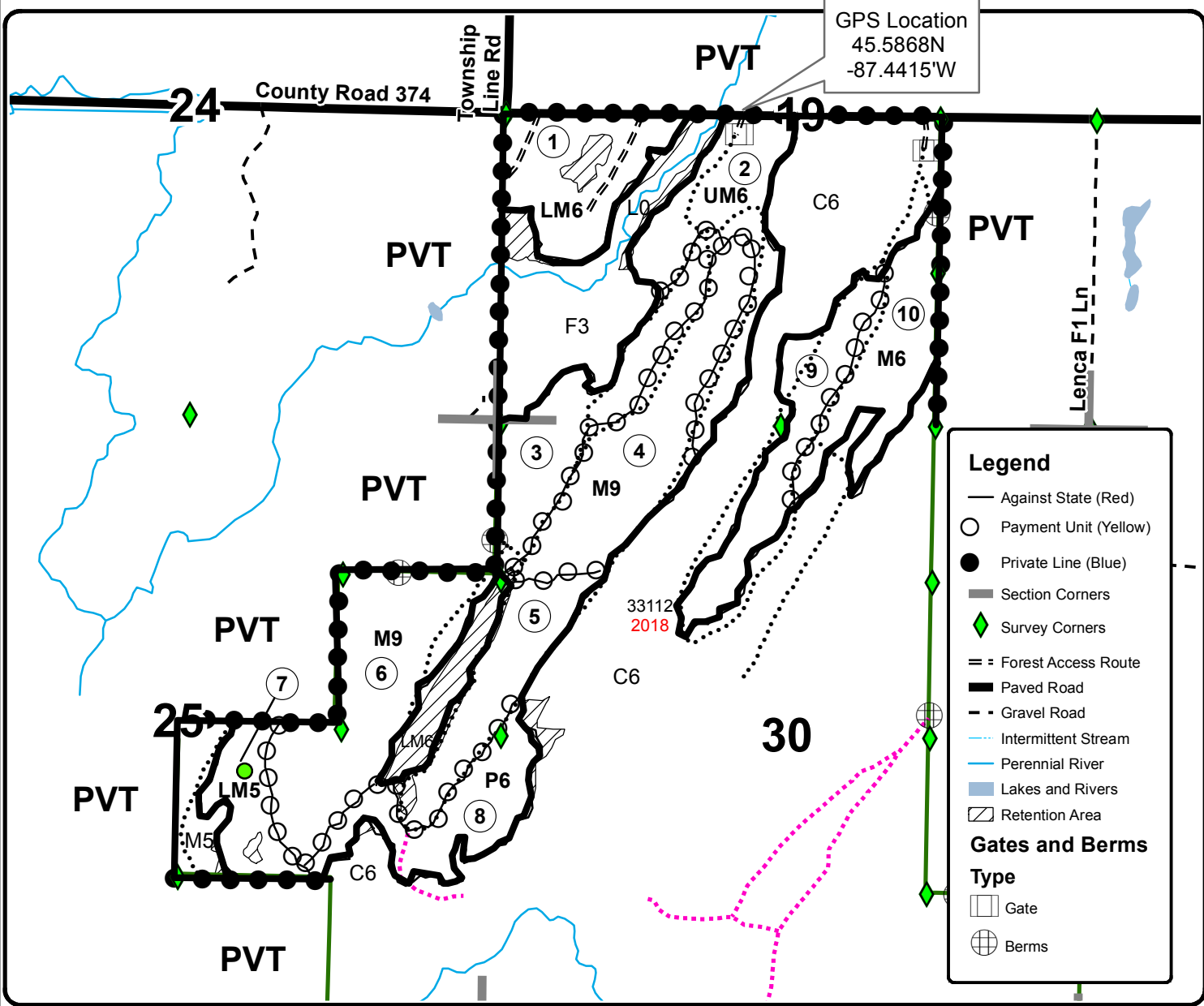
374 North Drumlin

Compartment 112

297.9 Acres



GPS Location
45.5868N
-87.4415'W



Legend

- Against State (Red)
- Payment Unit (Yellow)
- Private Line (Blue)
- Section Corners
- ◆ Survey Corners
- == Forest Access Route
- Paved Road
- - Gravel Road
- Intermittent Stream
- Perennial River
- Lakes and Rivers
- ▨ Retention Area

Gates and Berms

Type

- Gate
- ⊕ Berms

