



TIMBER SALE MAP

This information provided by authority of Part 525, 1994 PA 451, as amended.

Forest Management Unit Escanaba		County Delta	Mapped By Racine	Date 9/27/2018	Page 1	of 1
Township 44/43N	Range 22W	Section(s) and Subdivision(s) 44/22 31) SESE 32) S1/2SW 43/22 5) N1/2NW, SWNW, S1/2NE, SW, N1/2SE 5) SWSE 6) N1/2NW, SWNW, NE, N1/2SE, SESE		Scale 1:15,840		

Cover Type

A = Aspen	H = Hemlock	N = Marsh	U = Upland Brush
B = Paper Birch	J = Jack Pine	O = Oak	UM = Upland Mixed
C = Cedar	L = Lowland Brush	P = Lowland Poplar	V = Bog or Marsh
D = Treed Bog	LM = Lowland Mixed	Q = Mixed Swamp Conifer	W = White Pine
E = Swamp Hdwoods	M = Mpl, Bch, Brch	R = Red Pine	X = Non Stocked
F = Spruce Fir	MC = Mixed Conifer	S = Black Spruce	Z = Water
G = Grass	MD = Mixed Deciduous	T = Tamarack	

Density

0 = Non Stocked	5 = Pole Timber Medium
1 = Seedling Sapling Poor	6 = Pole Timber Well
2 = Seedling Sapling Medium	7 = Saw Timber Poor
3 = Seedling Sapling Well	8 = Saw Timber Medium
4 = Pole Timber Poor	9 = Saw Timber Well

PU	Acres	PU	Acres
1	52.4	7	24
2	17.1	8	36.8
3	54.9	9	4
4	34.4	10	28
5	18.2	11	20.4
6	45.1		

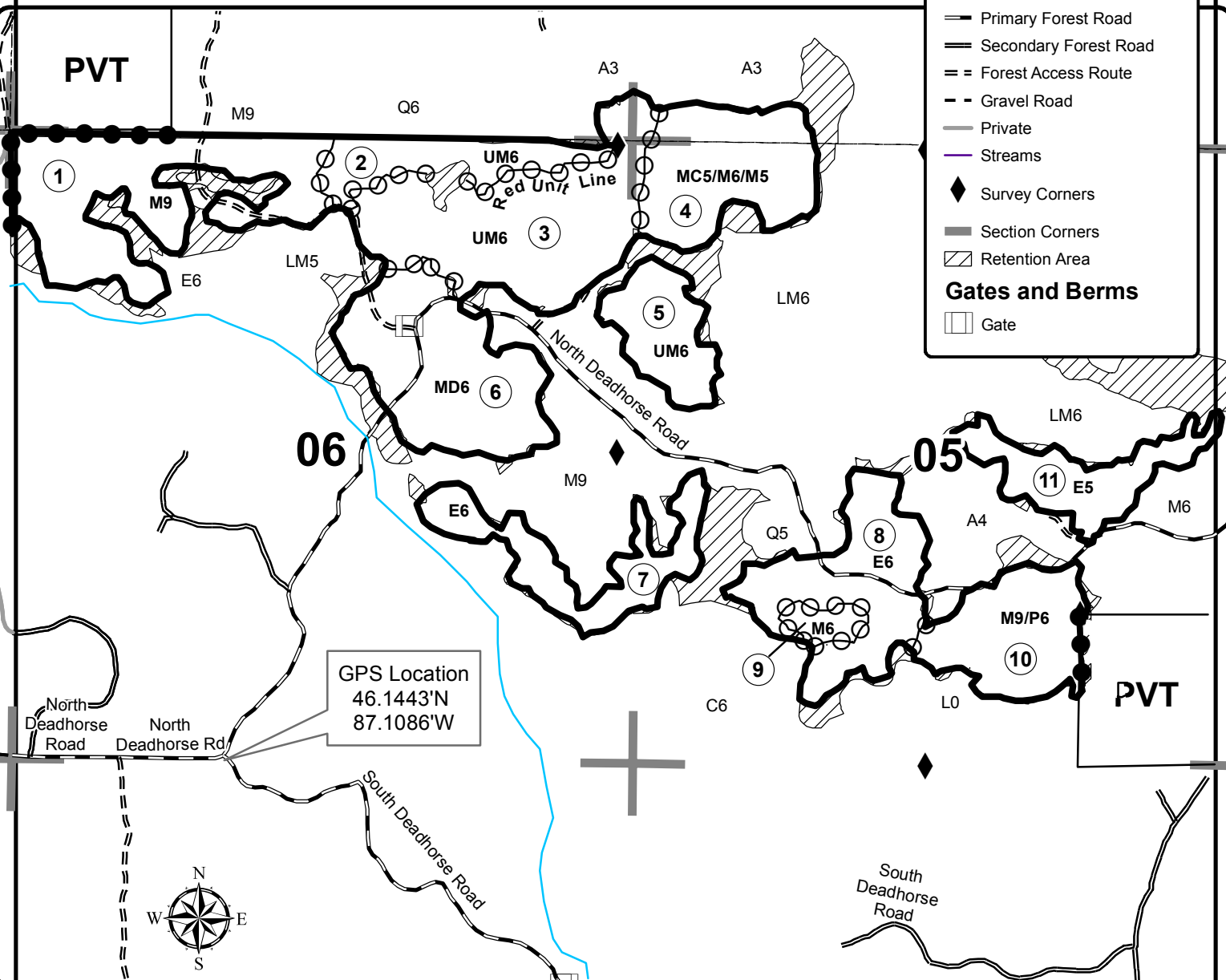
North Deadhorse Mix

Compartment 90/91

335.3 Acres

Legend

- Against State (Red)
- Payment Unit (Yellow/Red)
- Private Line (Blue)
- Primary Forest Road
- Secondary Forest Road
- Forest Access Route
- Gravel Road
- Private
- Streams
- Survey Corners
- Section Corners
- Retention Area
- Gates and Berms**
- Gate



GPS Location
46.1443°N
87.1086°W

