



Sale Number	Year
33-025	19

TIMBER SALE MAP

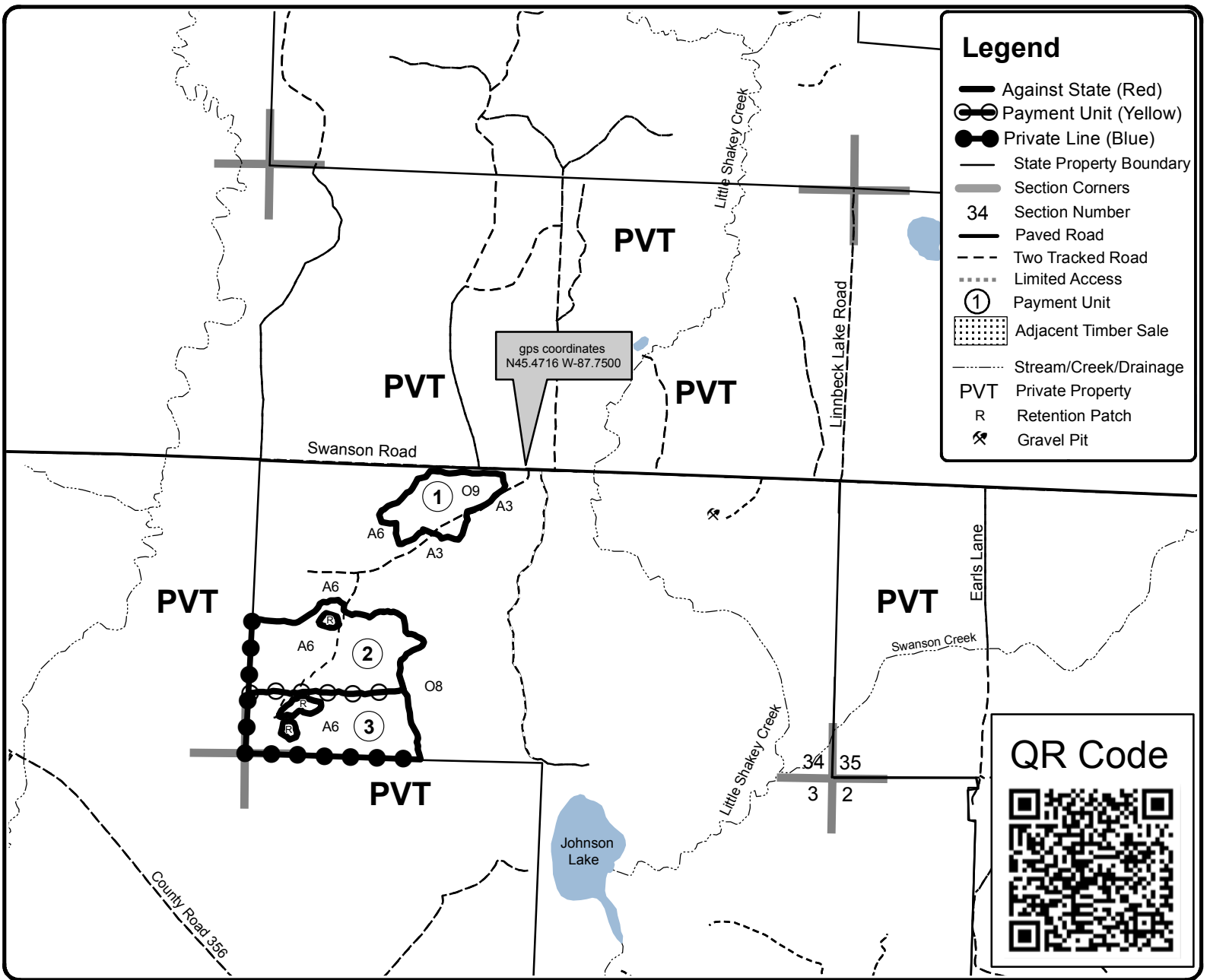
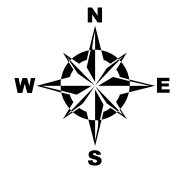
This information provided by authority of Part 525, 1994 PA 451, as amended.

Forest Management Unit Escanaba Management Unit	County Menominee County	Mapped By Beaudo	Date 12/27/2018 revised 7/11/2019	Page 1	of 1
Township 36N	Range 28W	Section(s) and Subdivision(s) Sec 34 - SW	Scale 1:15,840		

Cover Type				Density	
A = Aspen	H = Hemlock	N = Marsh	U = Upland Brush	0 = Non Stocked	5 = Pole Timber Medium
B = Paper Birch	J = Jack Pine	O = Oak	UM = Upland Mixed	1 = Seedling Sapling Poor	6 = Pole Timber Well
C = Cedar	L = Lowland Brush	P = Lowland Poplar	V = Bog or Marsh	2 = Seedling Sapling Medium	7 = Saw Timber Poor
D = Treed Bog	LM = Lowland Mixed	Q = Mixed Swamp Conifer	W = White Pine	3 = Seedling Sapling Well	8 = Saw Timber Medium
E = Swamp Hdwoods	M = Mpl, Bch, Brch	R = Red Pine	X = Non Stocked	4 = Pole Timber Poor	9 = Saw Timber Well
F = Spruce Fir	MC = Mixed Conifer	S = Black Spruce	Z = Water		
G = Grass	MD = Mixed Deciduous	T = Tamarack			

PU	Acres
1	9.9
2	22.6
3	18.5

Swanson South
Compartment 18
51 Acres



Legend

- Against State (Red)
- Payment Unit (Yellow)
- Private Line (Blue)
- State Property Boundary
- Section Corners
- Section Number
- Paved Road
- Two Tracked Road
- Limited Access
- Payment Unit
- Adjacent Timber Sale
- Stream/Creek/Drainage
- Private Property
- Retention Patch
- Gravel Pit

