



# TIMBER SALE MAP

This information provided by authority of Part 525, 1994 PA 451, as amended.

Forest Management Unit Escanaba Management Unit		County Menominee County	Mapped By Beaudo	Date 6/21/2019	Page 1	of 1
Township 36N	Range 28W	Section(s) and Subdivision(s) Sec 22 - SESE; Sec 23 - NWSW, S1/2SW; Sec 27 - S1/2NW, N1/2SW.		Scale 1:15,840		

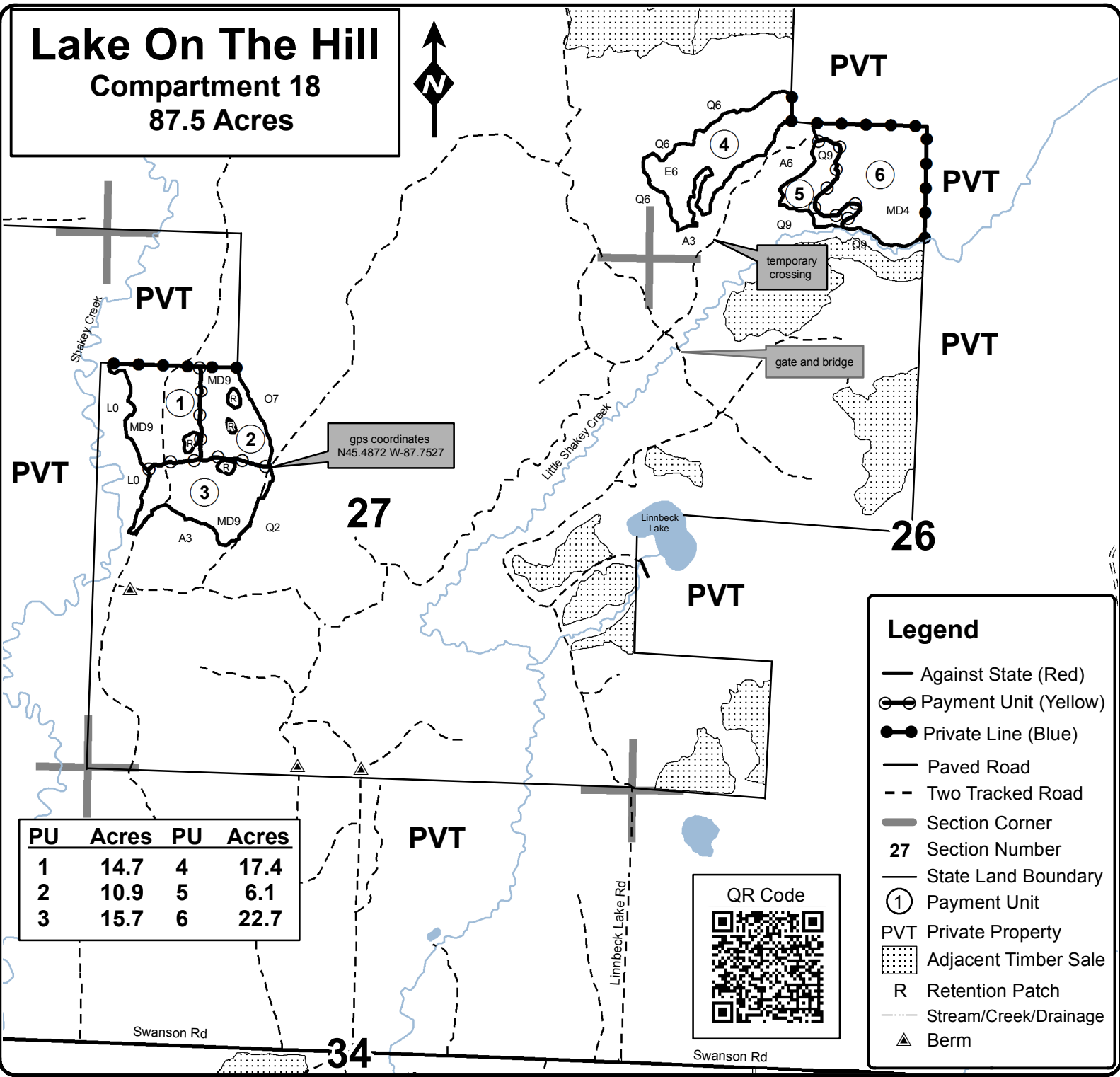
### Cover Type

- |                   |                      |                         |                   |
|-------------------|----------------------|-------------------------|-------------------|
| A = Aspen         | H = Hemlock          | N = Marsh               | U = Upland Brush  |
| B = Paper Birch   | J = Jack Pine        | O = Oak                 | UM = Upland Mixed |
| C = Cedar         | L = Lowland Brush    | P = Lowland Poplar      | V = Bog or Marsh  |
| D = Treed Bog     | LM = Lowland Mixed   | Q = Mixed Swamp Conifer | W = White Pine    |
| E = Swamp Hdwoods | M = Mpl, Bch, Brch   | R = Red Pine            | X = Non Stocked   |
| F = Spruce Fir    | MC = Mixed Conifer   | S = Black Spruce        | Z = Water         |
| G = Grass         | MD = Mixed Deciduous | T = Tamarack            |                   |

### Density

- |                             |                        |
|-----------------------------|------------------------|
| 0 = Non Stocked             | 5 = Pole Timber Medium |
| 1 = Seedling Sapling Poor   | 6 = Pole Timber Well   |
| 2 = Seedling Sapling Medium | 7 = Saw Timber Poor    |
| 3 = Seedling Sapling Well   | 8 = Saw Timber Medium  |
| 4 = Pole Timber Poor        | 9 = Saw Timber Well    |

**Lake On The Hill**  
Compartment 18  
87.5 Acres



gps coordinates  
N45.4872 W-87.7527

temporary crossing  
gate and bridge

PU	Acres	PU	Acres
1	14.7	4	17.4
2	10.9	5	6.1
3	15.7	6	22.7

### Legend

- Against State (Red)
- Payment Unit (Yellow)
- Private Line (Blue)
- Paved Road
- - Two Tracked Road
- Section Corner
- 27 Section Number
- State Land Boundary
- ① Payment Unit
- PVT Private Property
- ▨ Adjacent Timber Sale
- R Retention Patch
- Stream/Creek/Drainage
- ▲ Berm

