



TIMBER SALE MAP

This information provided by authority of Part 525, 1994 PA 451, as amended.

Forest Management Unit Escanaba Management Unit		County Menominee County	Mapped By Beaudo	Date 9/4/2019	Page 1	of 1
Township 35N	Range 26W	Section(s) and Subdivision(s) Sec 13 - SESW; Sec 24 - NENW, S1/2NW, SESW, SWSE; Sec 26 - SENW.		Scale 1:15,840		

Cover Type

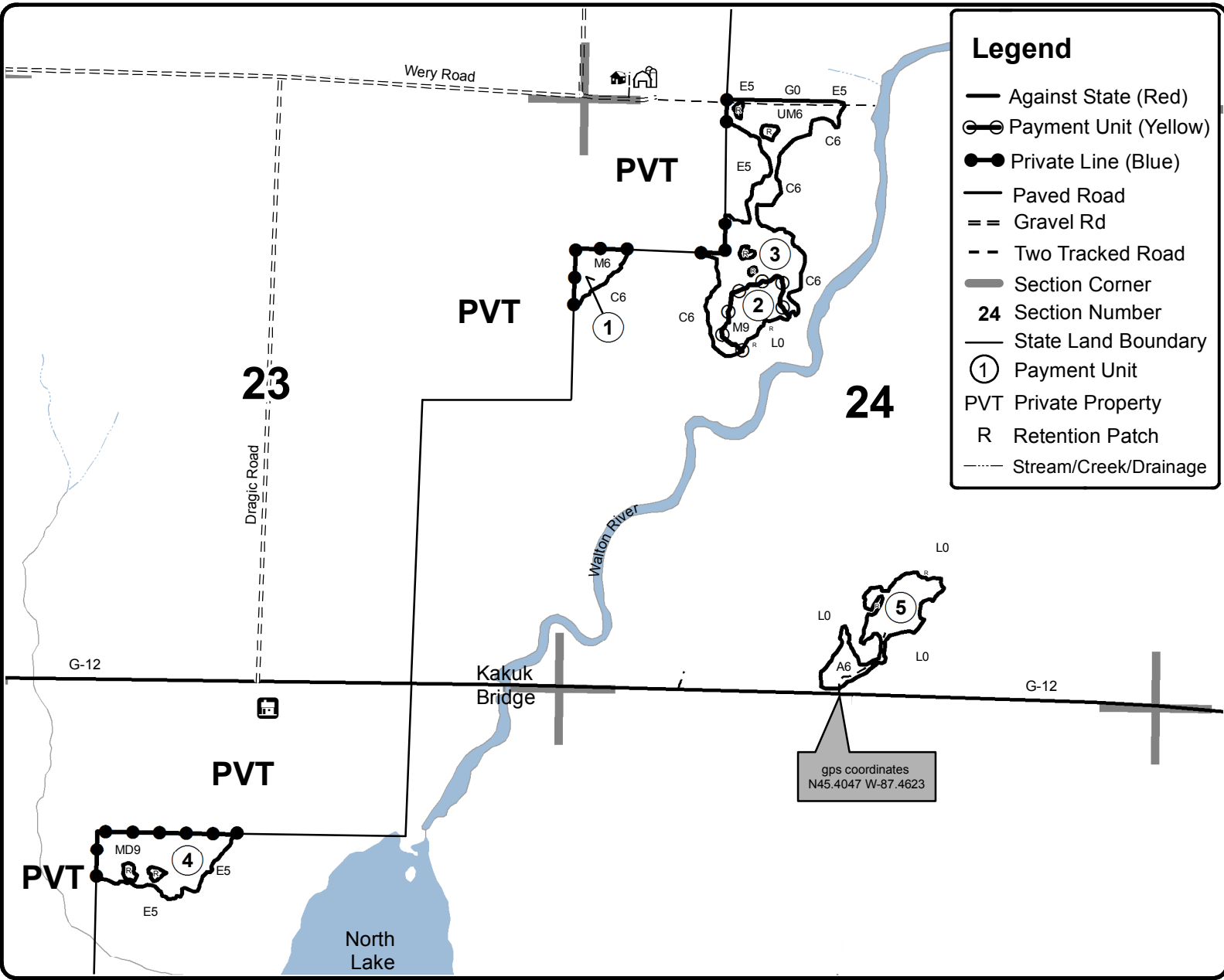
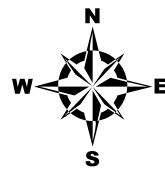
A = Aspen	H = Hemlock	N = Marsh	U = Upland Brush
B = Paper Birch	J = Jack Pine	O = Oak	UM = Upland Mixed
C = Cedar	L = Lowland Brush	P = Lowland Poplar	V = Bog or Marsh
D = Treed Bog	LM = Lowland Mixed	Q = Mixed Swamp Conifer	W = White Pine
E = Swamp Hdwoods	M = Mpl, Bch, Brch	R = Red Pine	X = Non Stocked
F = Spruce Fir	MC = Mixed Conifer	S = Black Spruce	Z = Water
G = Grass	MD = Mixed Deciduous	T = Tamarack	

Density

0 = Non Stocked	5 = Pole Timber Medium
1 = Seedling Sapling Poor	6 = Pole Timber Well
2 = Seedling Sapling Medium	7 = Saw Timber Poor
3 = Seedling Sapling Well	8 = Saw Timber Medium
4 = Pole Timber Poor	9 = Saw Timber Well

PU	Acres	PU	Acres
1	3.2	4	11.5
2	4.9	5	8.5
3	19.9		

Walton Revival Compartment 59 48.0 Acres



Legend

- Against State (Red)
- Payment Unit (Yellow)
- Private Line (Blue)
- Paved Road
- == Gravel Rd
- - Two Tracked Road
- Section Corner
- 24 Section Number
- State Land Boundary
- ① Payment Unit
- PVT Private Property
- R Retention Patch
- Stream/Creek/Drainage

gps coordinates
N45.4047 W-87.4623

