



# TIMBER SALE MAP

This information provided by authority of Part 525, 1994 PA 451, as amended.

Forest Management Unit Escanaba Management Unit		County Menominee County	Mapped By Beaudo	Date 9/24/2020	Page 1	of 1
Township 37N	Range 27W	Section(s) and Subdivision(s) Sec 32 - NE, SE; Sec 33 - SWNW, NWSW.		Scale 1:15,840		

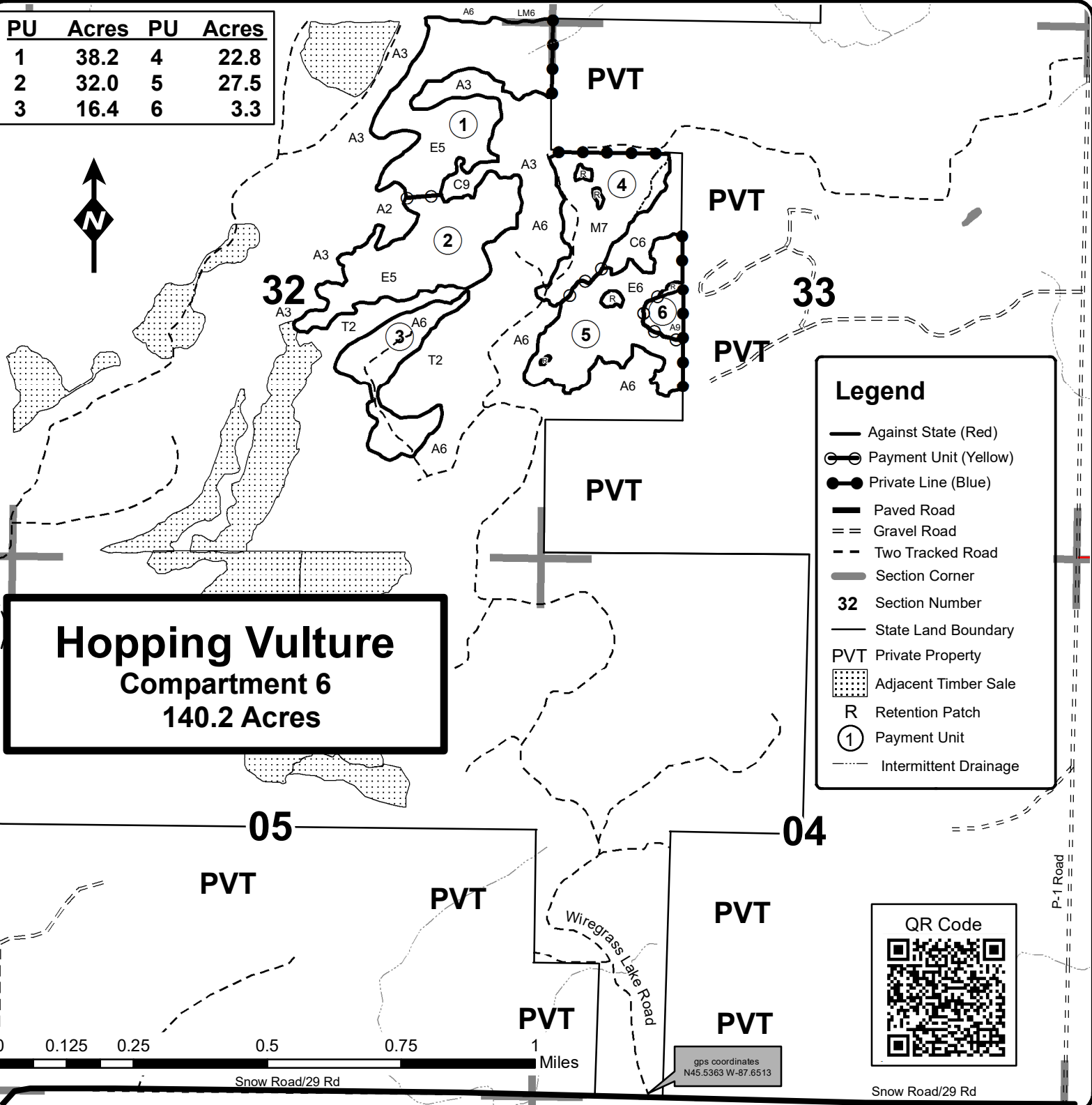
### Cover Type

- |                   |                      |                         |                   |
|-------------------|----------------------|-------------------------|-------------------|
| A = Aspen         | H = Hemlock          | N = Marsh               | U = Upland Brush  |
| B = Paper Birch   | J = Jack Pine        | O = Oak                 | UM = Upland Mixed |
| C = Cedar         | L = Lowland Brush    | P = Lowland Poplar      | V = Bog or Marsh  |
| D = Treed Bog     | LM = Lowland Mixed   | Q = Mixed Swamp Conifer | W = White Pine    |
| E = Swamp Hdwoods | M = Mpl, Bch, Brch   | R = Red Pine            | X = Non Stocked   |
| F = Spruce Fir    | MC = Mixed Conifer   | S = Black Spruce        | Z = Water         |
| G = Grass         | MD = Mixed Deciduous | T = Tamarack            |                   |

### Density

- |                             |                        |
|-----------------------------|------------------------|
| 0 = Non Stocked             | 5 = Pole Timber Medium |
| 1 = Seedling Sapling Poor   | 6 = Pole Timber Well   |
| 2 = Seedling Sapling Medium | 7 = Saw Timber Poor    |
| 3 = Seedling Sapling Well   | 8 = Saw Timber Medium  |
| 4 = Pole Timber Poor        | 9 = Saw Timber Well    |

PU	Acres	PU	Acres
1	38.2	4	22.8
2	32.0	5	27.5
3	16.4	6	3.3



**Hopping Vulture**  
**Compartment 6**  
**140.2 Acres**

### Legend

- Against State (Red)
- Payment Unit (Yellow)
- Private Line (Blue)
- Paved Road
- == Gravel Road
- - Two Tracked Road
- Section Corner
- 32** Section Number
- State Land Boundary
- PVT Private Property
- ▨ Adjacent Timber Sale
- R Retention Patch
- ① Payment Unit
- - - Intermittent Drainage



gps coordinates  
N45.5363 W-87.6513

Snow Road/29 Rd

Snow Road/29 Rd