



Sale Number	Year
33-025	21

# TIMBER SALE MAP

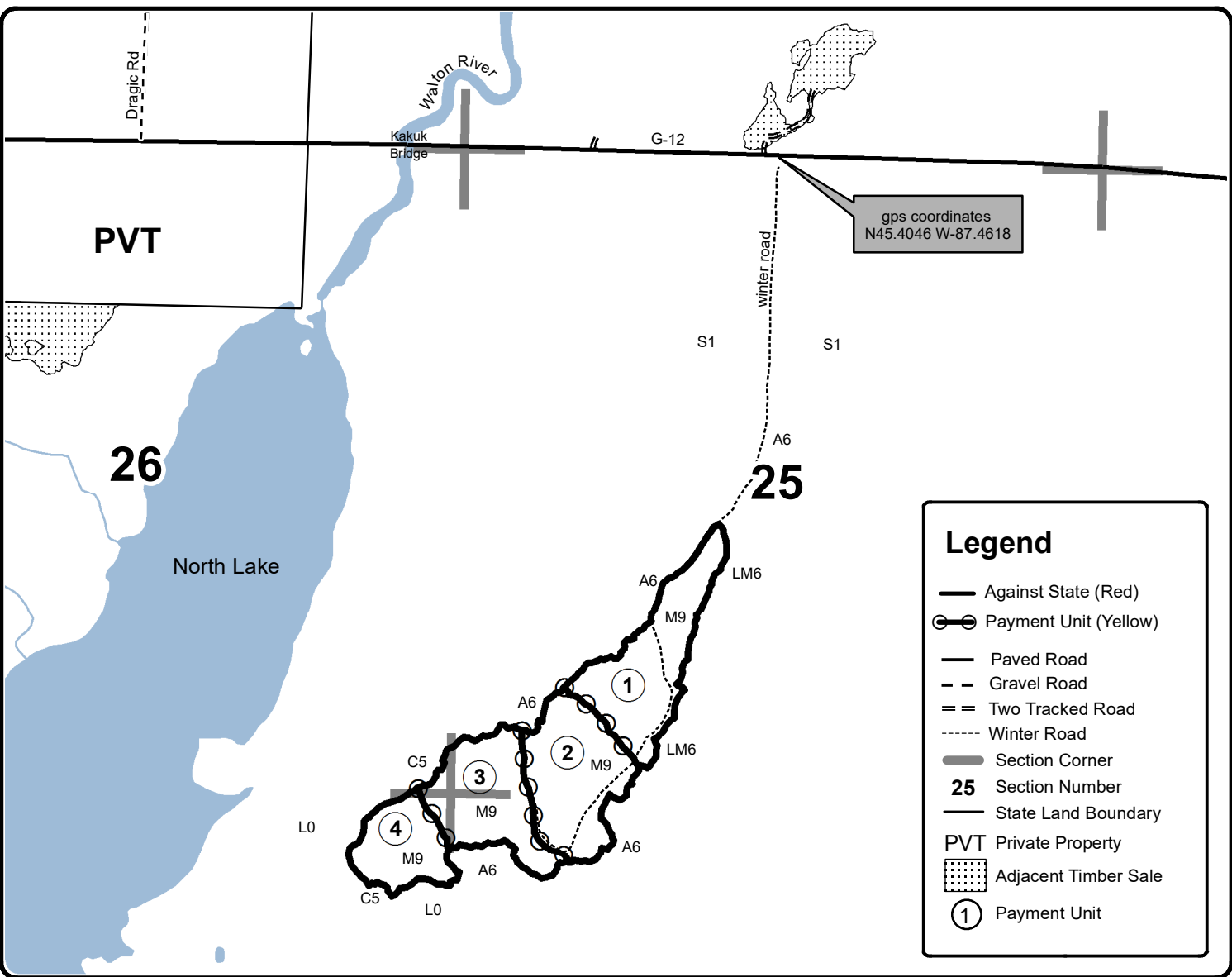
This information provided by authority of Part 525, 1994 PA 451, as amended.

Forest Management Unit		County	Mapped By	Date	Page of	
Escanaba Management Unit		Menominee County	Beaudou	1/25/2021	1	1
Township	Range	Section(s) and Subdivision(s)		Scale		
35N	26W	Sec 25 - S1/2SW, SESW; Sec 26 - SESE; Sec 35 - NENE; Sec 36 - N1/2NW.		1:15,840		

Cover Type				Density	
A = Aspen	H = Hemlock	N = Marsh	U = Upland Brush	0 = Non Stocked	5 = Pole Timber Medium
B = Paper Birch	J = Jack Pine	O = Oak	UM = Upland Mixed	1 = Seedling Sapling Poor	6 = Pole Timber Well
C = Cedar	L = Lowland Brush	P = Lowland Poplar	V = Bog or Marsh	2 = Seedling Sapling Medium	7 = Saw Timber Poor
D = Treed Bog	LM = Lowland Mixed	Q = Mixed Swamp Conifer	W = White Pine	3 = Seedling Sapling Well	8 = Saw Timber Medium
E = Swamp Hdwoods	M = Mpl, Bch, Brch	R = Red Pine	X = Non Stocked	4 = Pole Timber Poor	9 = Saw Timber Well
F = Spruce Fir	MC = Mixed Conifer	S = Black Spruce	Z = Water		
G = Grass	MD = Mixed Deciduous	T = Tamarack			

PU	Acres
1	21.2
2	20.5
3	17.9
4	11.2

**North Lake Hardwoods**  
Compartment 59  
70.8 Acres



Legend	
	Against State (Red)
	Payment Unit (Yellow)
	Paved Road
	Gravel Road
	Two Tracked Road
	Winter Road
	Section Corner
<b>25</b>	Section Number
	State Land Boundary
PVT	Private Property
	Adjacent Timber Sale
	Payment Unit

